

SANDRA

WRITTEN BY **DAVID CALE**

MUSIC BY **MATTHEW DEAN MARSH**

MAY 30 – JUNE 23

**THEATER
WORKS
HARTFORD**

twhartford.org

FROM THE PLAYWRIGHT

I came to theatre via music and films. I was a movie geek who wanted to be a singer. I wasn't familiar with plays at all, so when my path led me to theatre, the influence of films, particularly film noirs, film stories and music was in my blood.

With my previous solo play HARRY CLARKE my writing took a turn into one-man thriller territory, and with SANDRA my initial sole intent was to keep going in that direction and write a kind of a one-woman thriller.

I never outline anything, like Sandra I'm very intuitive. When I began writing, Sandra, because so often the characters lead the writer to where they want or need to go, led me to not just a thriller, but more importantly into a story of a woman's journey of self discovery, and what can happen if you are completely true to your instincts. When I heard Jared was going to direct SANDRA I was thrilled. My work has never been approached from such a multimedia perspective. It felt bold and exciting to me, an innovative and radically different approach to my writing, something new, but in a way what my writing felt like it was leading towards all along. I'm very grateful to TheaterWorks for presenting this production that so takes SANDRA, and my work, into a whole new territory.

– David Cale

FROM THE DIRECTOR

SANDRA is a psychological journey to reframe the past, and we are using the technology to make that journey feel - truly - like we are in real-time. Quite literally, multimedia is the second character in the show. The visuals feel as though we are intimately attached to Sandra's journey, helping navigate decisions and responses to the people and places she interacts with. The sounds and visuals aren't just backdrops, but – like an orchestra following a maestro – cinematic/immersive/up-close-and-personal landscapes that connect with every word Sandra is speaking. In this case, Sandra is the maestro as we climb into her mind and see not only what she saw, but how she saw it and how she felt when she saw it. I couldn't be more grateful to TheaterWorks Hartford for allowing Felicia and I, along with this intrepid creative team, to explore theatrical storytelling in new and innovative ways without losing track of this beautiful story, sculpted through such precision, by David Cale.

– Jared Mezzocchi

Producing Partners

**CHERYL CHASE AND STUART BEAR
FAMILY FOUNDATION**

**ROBERTS
FOUNDATION
FOR THE ARTS**

DR. ANNE ROTHSTEIN & JANE HELLMAN

#sandra



#theaterworkshartford

#twh



#twhartford

SANDRA

WRITTEN BY **DAVID CALE**

MUSIC BY **MATTHEW DEAN MARSH**



FELICIA CURRY*
as
Sandra

DIRECTED BY
JARED MEZZOCCHI†

CREATIVE CONTENT AND VIDEO DESIGN BY
CAMILLA TASSI
(Burry Fredrik Design Fellow)

Set Design

MARCELO MARTÍNEZ GARCÍA
(Burry Fredrik Design Fellow)

Costume Design

SARITA FELLOWS

Co-Lighting Design

AMITH CHANDRASHAKER

Co-Lighting Design

ALEX FETCHKO

Sound Design

EVDOKIA RAGKOU

(Burry Fredrik Foundation supported)

Stage Manager

TOM KOSIS*

Hair Design

TINIKA SADIKU

Dialect Coach

JOSH FS MOSER

SANDRA was produced by the VINEYARD THEATRE, Douglas Aibel, Artistic Director, Sarah Stern, Artistic Director, Suzanne Appel, Managing Director, New York City, 2022

SANDRA is presented by arrangement with Concord Theatricals on behalf of Samuel French, Inc. www.concordtheatricals.com

* Appearing through an Agreement between this theater and Actors' Equity Association, the Union of Professional Actors and Stage Managers in the United States.

† Member of SDC, Stage Directors and Choreographers Society.

United Scenic Artists, Local USA 829 of the IATSE is the union representing Scenic, Costume, Lighting, Sound and Projection Designers in Live Performance.



TheaterWorks Hartford is celebrating its 38th season as a non-profit, professional theater company. Founded in 1985.

SANDRA is the 4th show of the 2023-2024 Season.

TheaterWorks Hartford • 233 Pearl Street • Hartford, CT 06103 • 2024

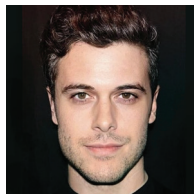
WHO



FELICIA CURRY (Sandra) is making her TheaterWorks Hartford debut. She is the Emmy-nominated host of WETA Arts on WETA/PBS. Felicia was in the Tony-nominated Broadway revival and national tour of *Into the Woods*. Off-Broadway, she recently reopened the iconic Billie Holiday Theater as Undine in Lynn Nottage's *Fabulation* and received an AUDELCO nomination for the solo show *Queen's Girl in the World* at Abingdon Theatre Company. Felicia is a Helen Hayes Award winner for *Lela & Co.*, an RTCC Award winner for *The Color Purple*, a Berkshire Theatre Critics Award winner for *Nina Simone: Four Women* and a recipient of the Anderson Hopkins Award for Excellence in Theatre Arts. She is an Artistic Associate at Ford's Theatre and Resident Company Member at Factory 449 and Everyman Theatre. Up next: *Broadway in the Park* at Wolf Trap and *Baltimore, Broadway and Beyond*, a cabaret event at Everyman Theatre. @thefeliciacurry



DAVID CALE (Playwright) is an award-winning performance artist, playwright, songwriter and actor based in New York City. His solo play *Harry Clarke*, starring Billy Crudup, premiered at the Vineyard Theatre and transferred to Audible at Minetta Lane Theatre where it won the Lucille Lortel Award for Outstanding Solo Show. It then ran at Berkeley Rep, before transferring to London's West End where it just completed a nine-week, sold out run at the Ambassadors Theatre. His follow-up solo play, *SANDRA*, also premiered at the Vineyard Theatre. His works as both writer and performer include *We're Only Alive for A Short Amount of Time*, for which he wrote the book, lyrics and co-composed the music with Matthew Dean Marsh (Obie Award, Outer Critics Circle Award for Outstanding Solo Performance, Lucille Lortel Award Nomination, with Marsh, for Outstanding Solo Show, Drama Desk Award nomination for Outstanding Solo Performance, with Cale and Marsh receiving the Jeff Award for New Musical); *The History of Kisses*; *Palomino*; *A Likely Story*; *Lillian* (Obie Award); *Deep in a Dream of You* (Bessie Award). He wrote the book, lyrics, co-composed the music for and starred in the musical *Floyd and Clea Under the Western Sky* (Outer Critics Circle Award nomination) inspired by his experience portraying Floyd Duffner in Alex and Andrew Smith's film, *The Slaughter Rule*. His songwriting credits include composing the songs for 600 Highwaymen's *Employee of the Year* (Bessie Award nomination).



MATTHEW DEAN MARSH (Original Music) has collaborated with David Cale over the past five years, their anthology of songs growing extensively during this time. Most notably, *We're Only Alive for A Short Amount of Time*, the autobiographical one-man musical with Cale in the starring role, featured music written by the duo and arranged by Marsh. For *We're Only Alive for A Short Amount of Time*, Cale and Marsh received the 2019 Jeff Award for New Musical and a 2020 Lucille Lortel Award nomination. Matthew music directed Clubbed Thumb's revival of *Tumacho*, directed by Leigh Silverman, in early 2020. His compositions have sounded at Madison Square Garden, Barclays Center, Radio City Music Hall, Lincoln Center, Tribeca Film Festival, The Public Theater, MassMOCA, and The Goodman Theater in Chicago.



JARED MEZZOCCHI (Director) is a two-time Obie award-winning director and multimedia designer, playwright, and actor. *SANDRA* marks his third production with TheaterWorks Hartford following the success of *Russian Troll Farm* and *Someone Else's House* during the pandemic. Mezzocchi's work spans the United States at notable theaters such as:

The Kennedy Center, Geffen Playhouse, Woolly Mammoth Theatre Company (company member), Vineyard Theatre, En Garde Arts, Manhattan Theatre Club, Cornerstone Theater Company, Arena Stage, Portland Center Stage at The Armory, South Coast Repertory, and HERE Arts Center. In 2016, he received his first Obie, the Lucille Lortel and Henry Hewes Award for his work in Qui Nguyen's *Vietgone* at the Manhattan Theatre Club. In December of 2020, The New York Times highlighted Jared on a list of the top 5 national artists making an impact during the pandemic. His directorial work on Sarah Gancher's live-digital production *Russian Troll Farm* (2020) was also celebrated as a New York Times Critic's Pick, praised for being one of the first digitally native successes for virtual theater, and earned Mezzocchi his second OBIE award. In Spring 2021, Jared wrote and starred in *Someone Else's House*, directed by Margot Bordelon, a ghost story centered around actual events with his family. This production was an 11-week run, performed live online each night to audiences all over the world. His book, *A Multimedia Designer's Method to Theatrical Storytelling*, is upcoming. He is a two-time MacDowell Artist Fellow, a Princess Grace Award winner, and is an Associate Professor at The University of Maryland, where he created the curriculum for the multimedia track within the MFA Design program. Mezzocchi has a BA in theater and film from Fairfield University, and an MFA in Performance and Interactive Media Arts from Brooklyn College. He is in his 10th year as Producing Artistic Director of Andy's Summer Playhouse in Wilton, NH, an innovative children's theater producing original work by professional artists from across the country.



CAMILLA TASSI (Creative Content & Video Design) is a projection/video designer, producer, and musician from Florence, Italy. Previously designed at TheaterWorks Hartford: *Fun Home* and *Lizzie*. Her credits include *Falling Out of Time* (Carnegie Hall), *Adoration* (Beth Morrison Projects), *L'Orfeo* (Apollo's Fire Tour), *King Arthur* (Lincoln Center, Juilliard415),

Malhaar: A Requiem For Water (LA Master Chorale, Disney Concert Hall), *Iphigénie en Tauride* (Boston Baroque), *Fires in the Mirror* (Baltimore Center Stage), *The Hunt* (Columbia), *The Extinctionist* (Heartbeat Opera), *Sea Change* (Miami City Ballet), Handel's *Alcina* & Stravinsky's *Rossignol* (Yale Opera), and video associate on Broadway's *Illinoise*. Camilla has directed and produced performances of period and contemporary classical works, including Missy Mazzoli's *Song from the Uproar*, a joint theater and opera project of Tennessee Williams and Larry Delinger's *Talk to Me Like the Rain* and the US Premiere of Morricone's *Se questo è un uomo*. Camilla has sung with the NY Phil, Yale Schola, and coaches Italian diction. She holds degrees in Computer Science & Music (U. Notre Dame), Digital Musics (Dartmouth) and an MFA in Projection Design (Yale School of Drama). Burry Fredrik Design and Robert L. Tobin Opera Design Award recipient. @camtassi camillatassi.com



MARCELO MARTINEZ GARCIA (Set Design | he/him/él) is a proud Mexican Scenic Designer and Architect. Theater: *The Garbologists* (TheaterWorks Hartford), *Manhatta* (The Public Theater), *Torera* (Alley Theater), *Mojada: A Medea in Los Angeles* (Yale Repertory Theater). Upcoming: *Dial M for Murder*

WHO

(Alley Theater & CPIP), *Riverside* (Indy Shakes). Martínez holds a degree in Architecture from ITESM MTY, a specialization in Scenic Design from CENTRO CDMX, and an MFA in Theater Design from Yale School of Drama. marcelomg.com @marcelomgdesigns



SARITA FELLOWS (Costume Design) was born in Freetown, Sierra Leone. She is happy to be back at TheaterWorks Hartford after designing *Sanctuary City* earlier in the spring. Her more recent works include projects such as *Death of a Salesman*, Broadway; *The Ally*, *A Bright Room Called Day*, The Public Theater; *Drinking in America*, Audible Minetta

Lane Theater; *Theater of the Mind*, Denver Center of Performing Arts; *King James*, The Old Globe; *Elyria*, Atlantic Theater Co; *Blues for An Alabama Sky*, Sweat, Guthrie Theater; *Joy and Pandemic*, *Our Daughters Like Pillars*, Huntington Theatre; *Loving and Loving*, Actors Theater of Louisville; *Seize The King*, Alliance Theater; *Fefu and Her Friends*, American Conservatory Theater. *Odyssey*, Acting Theater Co; *Bite Me*, WP Project. In the dance world, Sarita has worked with choreographers such as Liz Lerman and Edisa Weeks. MFA in design from Tisch School of Design. Awarded Outstanding Achievement in Costume Design (The National Black Theater Festival, Lily Award (2020).



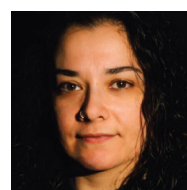
AMITH CHANDRASHAKER (Co-Lighting Design) Broadway: *Prayer for the French Republic* and *Merrily We Roll Along*. Off-Broadway: *The Public*, Playwrights Horizons, NYTW, The Atlantic, and The Signature. Regional Theaters: Second Stage, Manhattan Theater Club, Steppenwolf, Chicago Shakespeare, The Geffen, and The Huntington. Opera: The Glimmerglass

Festival, Houston Grand Opera, Royal New Zealand Ballet, Washington National Opera. Dance: Staatstheater Nuremberg, The Lyon Opera Ballet, The Royal Ballet of New Zealand, The Joyce, and The National Dance Company of Wales. He is the recipient of The Drama Desk and Henry Hewes awards; Union Trustee for United Scenic Artists, Local USA 829, IATSE; MFA, NYU Tisch School of the Arts and faculty at The University of Maryland's School for Theatre Dance and Performance Studies.



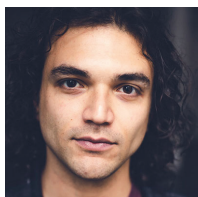
ALEX FETCHKO (Co-Lighting Design) is a NYC-based Lighting Designer. Alex works primarily as a Lighting Associate, Supervisor, and Programmer. Select Credits include Broadway: *Chicken and Biscuits* (Prog); Brooklyn: *Company XIV* (Prog, Asc); Touring: *Camille A Brown & Dancers* (Sup), *...iphigenia* (esperanza spalding & Wayne Shorter), *An Officer*

and a Gentleman (Ast); Off-Broadway: *Selling Kabul* (Playwrights, Des), *The Apiary* (2nd Stage, Asc), *Becky Nurse of Salem* (LCT, Asc), *Letters From Max* (Signature, Asc), *Halfway Bitches Go Straight to Heaven* (Atlantic Theatre Co, Asc), *Hurricane Diane* (NY Theatre Workshop, Asc), *Sakina's Restaurant* (Audible, Asc), *Broadbend Arkansas* (Transport Group); *The Sickness* (Varda Productions, Des); Regional: Ogunquit Playhouse, Williamstown Theatre Festival, Glimmerglass Festival, McCarter Theatre Center, Commonwealth Shakespeare Co, Huntington Theatre Co. alexfetchko.com



EVDOKIA RAGKOU (Sound Design | she/her/hers) holds an MFA in sound design from Yale School of Drama and is an East Coast-based composer and sound artist. She is keenly interested in sound, using it as her primary medium for composition, and strongly believes in its storytelling powers. She writes all sorts of music and is oriented towards creative ways to tell

stories. She has worked in venues such as Rattlestick Theater, Playwrights Horizons, Yale Cabaret, and Yale Repertory Theater. This is her **TheaterWorks Hartford** debut. She has written music for various dance projects and short films. She also wears the hat of a solo artist, and you can say that she is overall a person of a sound mind.



JOSH FS MOSER (Dialect Coach | they/them/elle) is an NYC-based actor and voice/dialect specialist represented by Brickhouse Talent. They are thrilled to be coaching Felicia in the **TheaterWorks Hartford** production of *SANDRA*. Additional Coaching includes: Utah Shakespeare Festival; Profile Theater Portland; Phoenix Theatre Ensemble;

Brown U/Trinity Repertory; CNN's Harry Enten; Savannah Stage Company; Savannah Shakes; and others. Josh is a Certified Teacher of both Fitzmaurice Voicework® and Knight Thompson Speechwork, with an MFA from Savannah College of Art and Design. Currently, Josh is an Assistant Professor in Kean University's Theatre Conservatory, as well as a Senior Consultant for Strictly Speaking Group. Additional teaching experience details available at JoshFSMoser.com. Proud member: Actors' Equity Association, the Hispanic Organization of Latin Actors, the Voice and Speech Trainers Association. Resident Artist Phoenix Theatre Ensemble.



ROB RUGGIERO (Artistic Director) has been a part of **TheaterWorks Hartford's** artistic leadership for 30 seasons. He has directed over 70 shows, including TWH productions of *Fun Home*, *The Sound Inside*, *American Son*, *The Legend of Georgia McBride*, *Constellations*, *Next to Normal*, *Relativity* (starring Richard Dreyfuss), and *Christmas on the*

Rocks, which he also conceived. His Broadway credits include *Looped* (starring Valerie Harper in a Tony-nominated performance) and *High* (starring Kathleen Turner) which had its world premiere at TWH. He also conceived and directed the musical revue *Make Me a Song: The Music of William Finn* which moved off-Broadway and was nominated for Drama Desk and Outer Critics Circle Awards. Rob conceived and directed *Ella*, a musical about Ella Fitzgerald, which saw sold-out runs in 24 regional theaters and was produced as a National Tour. His work on plays and musicals has received multiple awards in Connecticut and around the United States. Rob regularly directs at Goodspeed Musicals where over his 16-year relationship he has directed many award-winning musical productions including this spring's *The Mystery of Edwin Drood*. Internationally he directed *Fiddler on the Roof* in Athens, Greece.



MIKE LENAGHAN (Director of Production) This season is Mike's 12th with **TheaterWorks Hartford**. Mike's professional career began at Goodspeed Musicals, followed by Juilliard School's Production Department, and Westport Playhouse. Broadway credits include *Thoroughly Modern Millie*, *Our Town* and *Fortune's Fool*. Off-Broadway: *The It Girl*, *Suburb* and *The Summer of '42*.

TOM KOSIS (Production Stage Manager) *SANDRA* marks Tom's 9th production with **TheaterWorks Hartford**. Broadway: *Mary Poppins*, *Side Show*, *The Scarlet Pimpernel*, *Flower Drum Song*, *Bye Bye Birdie*, *A Chorus Line*, *Ann*, *My Fair Lady*, *Grand Hotel*, *Nice Work If You Can Get It*. National and International Tours: Irving Berlin's *White Christmas*, *A Chorus Line*, *Song & Dance*, *West Side Story*, *Dreamgirls*. Tom was the Associate Director/Choreographer for *The Radio City Music Hall Christmas Spectacular*. tomkosis.com

WHO

ACTORS' EQUITY ASSOCIATION ("Equity"), founded in 1913, is the U.S. labor union that represents more than 51,000 professional Actors and Stage Managers. Equity fosters the art of live theater as an essential component of society and advances The careers of its members by negotiating wages, improving working conditions and providing a wide range of benefits, including health and pension plans. Actors' Equity is a member of the AFLCIO and is affiliated with FIA, an international organization of performing arts unions. #EquityWorks

THANKS FOR MAKING THINGS HAPPEN



Hartford
Foundation
FOR PUBLIC GIVING



BANK OF AMERICA



**GREATER HARTFORD
ARTS COUNCIL**



NASSAU

TRAVELERS

**ROBERTS
FOUNDATION
FOR THE ARTS**



Lincoln
Financial Foundation



HSB
A Munich Re company



Raytheon
Technologies

cthumanities



Bank

America's Most Convenient Bank®

Connecticut
still revolutionary

THE **SHUBERT
FOUNDATION INC.**

Richard P. Garmany Fund at the Hartford Foundation for Public Giving

The Burry Fredrik Foundation

Cheryl Chase and Stuart Bear Family Foundation

Ensworth Charitable Foundation, Bank of America, N.A., Trustee

John and Kelly Hartman Foundation

The George A. & Grace L. Long Foundation, Bank of America, Co-Trustee

William and Alice Mortensen Foundation

The Elizabeth M. Landon and Harriette M. Landon Charitable Trust

The Katherine K. McLane and Henry R. McLane Charitable Trust

Liberty Bank

M&T Bank

**The
Goodwin**
Hartford's boutique hotel

The Goodwin is the official hotel of TheaterWorks Hartford.



AN OASIS OF CLASSICAL AND CLASSIC MUSIC

WMNR.ORG

88.1FM 91.5FM 90.1FM

THANKS

Adam Bintz, CT State Capital Community College, Nicole Cohen, Rosemary & Michael Mezzocchi, Jeff Provost and Legacy Theatre, Dr. Daniel Scaringe of Boulevard Chiropractic, Hartford Stage, Long Wharf Theatre

SANDRA CREW

Audio Visual Supervisor
Adam Bintz

Content Creation Assistant &
Projections Programmer
Andrés Poch

Projections Programmer
Mark Williams

Sound Board Operator
Gavin Mastella

Light Board Operator
Sasha Wahl

Scenic Charge / Props
Kelly Daigneault

Production Crew
Cali Holt
Kailey Linden
Gavin Mastella
Josh Murphy

Electricians
Jayne Carlman
Nicole Rivera
Kyle Tinker-Palaia

STAFF

Artistic Director
Rob Ruggiero

Director of Production
Mike Lenaghan

Company Manager/
Costume Supervisor
Cecelia Chapman

Assistant Technical Director
David Weaver

House Electrician
Sasha Wahl

Assistant Stage Manager/
Wardrobe
Jennifer Kiefer

Director of Marketing/
Communications
Katherine Plutnicki

Marketing Manager
Freddie McInerney

Social Media Coordinator
Joël Cintron

Managing Director
Jeff Griffin

Director of Development
Dina Silva

Development and Community
Engagement Associate
Erica Tracy Sullivan

General Manager
Nicole LaFlair Nieves

Producing Associate
Kate J. Cudworth

Director of Audience
Administration
Joshua Demers

Audience Services
Chloe Anderson
Nicole Barnes
Mailina Betsey-Chambers

Facilities Manager
Bill Farquhar

Janitorial
Chris Williams

BOARD

Michael G. Albano (Co-President)

Dina Plapler (Co-President)

Kristen Phillips (Vice President)

Larry Samplatsky (Treasurer)

Stephanie A. Johnson (Secretary)

Jennifer DiBella (Asst Secretary)

Justis Bolding

Fernando Ferro

Grace Figueredo

Christopher R. Hayes

Gordon Hui

Lee G. Kuckro

Françoise A. Miller

Felix Okwaning

Robert Pulito

Joshua C. Torrence

Christopher White

MAX HOS

Dining Worthy of a

MAX DOWNTOWN 185 Asylum

MAX'S TRUMBULL KITCHEN 150 Tru

BAR MAX 1 Haynes Street, Hartford

HAYNES ST 1 Haynes Street, Hartford

Bar
Max



HAYNES ST.

BESPOKE ENTERTAINING

New Private Event Space. Call 860.930.4677 for more in

HOSPITALITY:

Standing Ovation

Street, Hartford 860.522.2530

mbull Street, Hartford 860.493.7412

(at The Goodwin Hotel) 860.930.4677

(at The Goodwin Hotel) 860.930.4677



ANNUAL FUND DONORS

PLATINUM PARTNERS

Gifts of \$25,000+

Cheryl Chase and Stuart Bear Family Foundation
The Hoffman Family
The Richard P. Garmany Fund at HFGP
LAZ Parking
Marjorie E. Morrissey
Ruth G. Timme Family Foundation
Theresa Waltz

GOLD PARTNERS

Gifts of \$10,000+

Ivan A. Backer* and Paula Fisher
Common Sense Fund
ETCH
Robert and Francine Goldfarb
Suzanne M. Hopgood
Christine Hunihan*
Ted and Adlyn Loewenthal
Thomas W. and Emily B. Nissley
Kristen M. Phillips and Matthew Schreck
Dina Plapler and Earl McMahan
Dr. Anne Rothstein and Jane Hellman
Jonathan and Sherry Schreiber
Elizabeth Vandeventer

SILVER PARTNERS

Gifts of \$5,000+

Anonymous
Andrew Benator
Grace Figueredo and Ken Gostyla
Ted and Kathy Fleming
Helen and Henry Frye
Floyd W. Green, III
William Knight and Jill Adams
The Elizabeth M. Landon and Harriette M. Landon Charitable Foundation
Joy McConnell
The Katharine K. McLane and Henry R. McLane Charitable Trust
Françoise and Hans Miller
Larry Samplatsky and John Tackus
Elizabeth Schiro and Stephen Bayer
Kevin and Marcia Smith
The Zachs Family Foundation

BRONZE PARTNERS

Gifts of \$2,500+

Doug and Sheryl Adkins
Anonymous
Staci Bachman
Jacqueline Berkowitz
James Bruno and William Gratz
Stacy Brusa
Amy Charney and Lewis K. Wise

BRONZE PARTNERS (continued)

Gifts of \$2,500+

The Estate of Rose Marie Cilia
 The Gawlicki Family Foundation
 Catherine Godin
 Peter Grzybala and Diane Korntheuer
 Angeline and David Hein
 Lee G. Kuckro
 Marcia Lattimore
 Jia Luo and Michael Monts
 Kenneth and Cynthia Malm
 Marks Family Foundation
 Jill and Martin Mass
 Eric D. Ort and Duff Ashmead
 Joan and Barry Richter
 James M. Salemi and Kenneth J. Bartschi
 Helen and Nelson Sly

LEADING DONORS

Gifts of \$1,000+

Michael G. Albano and Nancy B. Alisberg	Gordon and Kelly Hui
Liz Armstrong	Douglas and Tita Hyland
Ann Azevedo and Donato T. DiGenova	Sharon and David Jepson
Thomas O. and Melanie A. Barnes	Stephanie Johnson
Peter and Lisa Block	Donna M. and John Kidwell
George Bouthet	David and Jan Klein
Abhishek Bulusu	Dr. and Mrs. Bernard Kosto
Claire Burns	Wally and Chris Lamb
Karen K. Byrne	Christopher Larsen
Ann M. Catino	Judy Lewis
Alison and Tony Caxide	Steve and Sheila Litchfield
Jonathan Clark	Kathleen Lovell
Tammy Conley and Roselinde Torres	Barri R. Marks and Woody Exley
James and Sheryll-Ann Covill	Leta W. Marks
Richard A. and Aida Cyphers	Susan Monks
Catherine Daly and Roy Dion	Richard E. and Paula Musgrave
Jack and Alice Ellovich	Barbie Nadal-Cristofaro and Victor Cristofaro
Diane Ellsworth	Beverly and Charles Michael O'Halloran
Fernando Ferro and Jane Owen	Bill and Joy O'Sullivan
Muriel and Karl Fleischmann	Felix Okwaning
Jerry and Ida Franklin	Richard Orr and Cynthia Courtney
William Fuller	Gerald Pastor and Jane Porterfield
Peter and Melissa Gambardella	Robert and Margaret Patricelli
Carol and Peter Ganick	Susan Pollard
Tom and Cynthia Garten	Roberta W. Prescott* and Robert O. Hurwitz*
Ken and Jennifer Geisler	Bob and Patti Pulito
William T. Gough and Jane Cook	Joan and Allan B. Reiskin
Laura Harris	Linda L. and Stephen E. Revis
Hartford Lumber Company	Annemarie H. Riemer
Brian E. Harvey and Sherry A. Manetta	Christina and Ezra Ripple
Christopher Hayes	Joel and Susan Rottner
Elaine Hobart	
Susan Holmes and Bessy Reyna	

ANNUAL FUND DONORS

LEADING DONORS

Gifts of \$1,000+

Rob Ruggiero	Robert H. Tabshey
Mary Beth Russell	Allan B. and Sally S. Taylor
Pedro Segarra and Charlie Ortiz	Jeff Rudikoff and Edee Tenser
The Carol Sirot Foundation	Christopher White and Patrick Langevin
Jeff Snyder	Mara A. Whitman and Marc Edrich
Karen Lee Snyder	Randall Wilcox and Richard Costabile
Sally Speer	Dale Paul Woodiel, Jr.
Robert Stillman and Leslie Fass	Dale Woodiel, Sr. and Linda Rountree
Donna M. and Sam Stout	

LOYAL SUPPORTERS

Gifts of \$250+

Accounting Resources, Inc.	Keith R. Cudworth
Acorn-Alcinda Foundation	Evan Cowles and Brie Quinby
Victoria F. and Leonard Albert	Jennifer and Marc A. DiBella
P. K. and Phoebe R. Allen	Sharon F. and George Dickerman
Gregory and Mona Anderson	Deirdre and Tom Dillow
Anonymous (3)	Heather and Philip Dilorenzo
Carolyn Arabolos	Michele and John L. Dolan
Kathleen and Thomas Archambault	Hollis Dorman
Joyce and Richard Armstrong	Maureen and James E. Dougherty
John R. and Angela Arrington	Lise Doutre
Stephen and Judy August	Beverly and Chris Doyle
Anthony and Beverley Bellisio	Melissa J. Taylor-Doyle and Chris Doyle
Catherine and Bruce Bernstein	Ms. Mary-Jane Eisen and Robert K. Yass
Jon D. and Cheryl Bertus	Carolyn Emerson
Paul and Joanne Bourdeau	William and Joan Farquhar
Julianne and Norman Boyd	David and Peggy Fay
Whitney Boynton and Kevin Galvin	The Fechter Family Foundation at HFGP
John Brancato	Richard and Georgia Feigel
Joanne and Peter Brandien	Stanley and Susan P. Fellman
Joel Brehm and Rodney Dugas	Jocelyn and Dan Fenyn
James and Riki Brodey	Christine Fisch
Julie A. Brogan and Christopher A. Uhrich	Michael and Evelyn Fishman
Luke and Sara Bronin	Catherine Franks
Ellen M. Brown	Rachel Galligan
Boguslawa Buczek	Alice and Gary Gold
Avery and Eileen Buell	Linda and Ira Goldman
Alison Burns	Robert and Lee Goode
Mary Busick and Michael Ungaro	Pamela and Barry Gordon
John and Marla Byrnes	Dan Greden
Mary and Ritchard Cable	Daniel G. Green and Walter Langner
John Cariani	Valentin and Greta Gribkoff
Ann Clark and David Ehler	David and Rachel Griffin
Linda F. Cohen	Pierre and MaryEllen Guertin
Steven and Elaine Cohen	Kimberly Harrison
Dennis Cole	Frank Haviland and Shirley Mae Neu
James P. Condren and Ellen J. Robinson	Felice Heller and Michael Steinberg
Audrey Conrad	Ronald V. and Patricia Hensley
Susan B. Coogan	Hillary Huttenhower
Carol Coppa	Alden Hobart
Paula K. Corrao	


LOYAL SUPPORTERS

Gifts of \$250+

Warren Hollister
 Polly Huntington
 Bradley and Lisa Hurley
 Karen Isaacs
 Valerie and Mathew Jasinski
 James J. Keller and Candice M. Chirgotis
 David Kelly and Keyne B. Reid
 Kathy and Edward Kennedy
 Kitchen and Bath Design Construction
 Myra R. and William Kleinman
 Bradford Korder
 Wendy Kwalwasser
 Susannah Landis
 Ann and Bill Lazarek
 William and Deanna Leikin
 Gary and Debbie Letscher
 Doreen Linton
 Barbara and Bing Liu
 Guy and Sharon Marhewka
 Eileen M. Marks and Ed Mikolowsky
 Judy and Merrill Marks
 Jeffrey Amell and Mary S. Martin
 Erin McGurk
 Peggy and Alan Mendelson
 Donald N. and Regina M. Miller
 Barbara Mitchell
 Brian Molinari and Kristan Pierz
 Polly Moon
 Danielle K. and Jim Naylor
 Kathy and Walter Nicksa
 Don Noel
 Rod O'Connor
 MarySue Owens
 Joseph Pace
 Alan and Jennifer Panecasio
 Scott and Susanne Pape
 Alan and Michele Parker
 The Estate of Marlene G. Passman
 Richard and Robin Pearson
 MaryJane Perrier
 Randi and Steve Piaker
 Raphael Podolsky and Jill Mehler
 Leslie Pollack
 Lynn Pollack
 Frances Porter
 Laura Post and Mark Pazniokas
 Sandra and George Pruce
 Naomi H. Rafalowicz
 Jo-Anne Rankin and John Williams
 Ann Reed
 Patricia and Edgar Reed
 Rebecca M. Rehel and Suzanne E. Caron
 Margaret and Charles Rich
 Frank Rizzo
 Jo Ann Roberts
 Nancy and Stephen Roberts
 Gilda and David Roncari
 Barbara Rubin
 Sandra H. and Marshall Rulnick
 Peter Rusconi
 William Goba and Joan Russoniello-Goba
 Alan and Jan Rust
 Jennifer and Christian Sager
 Linda M. Samoncik
 Martha Sandefer and Frederick Sweitzer
 Dency C. Sargent
 Carolyn and Frank Sataline
 Phyllis Satter
 Roberta P. and Philip A. Schmidt
 Malcolm and Sally Schneider
 Leon H. and Brenda Seitelman
 Sandra L. Shaner
 Gale and Larry Shapiro
 Claire E. Shea
 Phyllis and Austin Sheridan
 Debbie and Jim Shmerling
 Joseph Shortell and Sara Bernstein
 Barbara Sicherman
 Penny and Steve Sigal
 Dina Silva
 Douglas and Roberta Simpson
 Richard and Raimi Slater
 Gilbert and Ruth L. Small
 Leslie Smith and Philip Wellman
 Sharon Smith
 Shirley Smith
 Tyler Smith and Lyn Walker
 Ruth and Howard Sovronsky, deceased
 Catherine J. Spera
 Felix J. and Helene L. Springer
 Beatrise Srams
 Glenn Stanisewski
 Larry Starr
 Barbara and Leon Stechenberg
 Stacey Stone
 Roberto Tollis and Peter Chester
 Maria Tsitsirides
 Arthur Edward Webster
 Gretchen H. Wiedie
 Arnold and Myrna Wyse
 Elliot Zweig and Doreen Fundiller-Zweig

THE ROB RUGGIERO INNOVATION FUND

Michael G. Albano and Nancy B. Alisberg
P. K. and Phoebe R. Allen
R. Kingsbury and Barbara Chase
Mr. Peter Arakas and Ms. Karen Kellerman
Virginia Argenio
James E. and Karen Bachman
Ivan A. Backer and Paula Fisher
Lynn Beaulieu and Gerry Lupacchino
Martha and Bob Belliveau
John and Laura Berman
Vanita Bhalla
John W. Bialobrzeski and Janet Rooney
Geraldine L. and Vern A. Biederman
Anne and Bruce Bowman
Patti Broad
Chester and Glenna Brodnicki
James Bruno and William Gratz
Ken Byer and Anthony Michalak
Patricia Carrigan
Polly Champ
Ted Chapin
Martin and Lorry Clayman
Patrick and Elena Coffey
Catherine Conlin
Susan B. Coogan
Evan Cowles and Brie Quinby
Keith R. Cudworth and Jane Coughlin*
Marisa Dal Ponte
Marjorie and Ronald Debold
Ms. Nancy M. Depalma
Jennifer and Marc A. DiBella
Sharon F. and George Dickerman
Marian Dziama and Karen Cormier
Susan Fay
Art Feltman and Dale James Wallington
Muriel and Karl Fleischmann
Joan Fox
Arthur Franklin
Jerry and Ida Franklin
Catherine Franks
Helen and Henry Frye
Michael Fuss
Barbara Gallo
Carol and Peter Ganick
Ken and Jennifer Geisler
Kathleen Gilrain
Robert and Francine Goldfarb
Felice Goldman
Firooz and Maria Golkar
William T. Gough and Jane Cook
Eileen Griffin
Lillian G. Harter
Ronald V. and Patricia Hensley
Warren Hollister
Beverly J. and Richard L. Hughes III
Polly Huntington
Susan Huntington
Sandra Jacobus
Valerie and Mathew Jasinski
Evan H. Johnson and Kevin Chick
James J. Keller and Candice M. Chirgotis
Judith and Richard T. Keppelman
Kitchen and Bath Design Construction
Dr. Alan and Lydia Klatsky
David and Jan Klein
Linda Koflanovich
Michele and Dane Kostin
Darwin W. and Susan Kovacs
Lee G. Kuckro
Nancy and Jerry Lahman
Supriya and Vijay Laknidhi
Annette Landry
Christopher Larsen
Marcia Lattimore
John W. and Joyce R. Lemega
Sherwood and Gwendolyn Lewis
Peggy Lorence
Betsy MacDermid
Diane Mack and Robin Gilmartin
Glen MacLeod
David T. and Judith W. Macri
Gloria Magliozzi
Lenore Mand
Judith C. and David L. McChesney
Joy McConnell
Kenton McCoy



Thomas and Marjorie Michalski
Donald N. and Regina M. Miller
Rachel Miller
Marjorie E. Morrissey
Richard E. and Paula Musgrave
Barbie Nadal-Cristofaro and Victor
Cristofaro
Wilbur J. and Amy Sevell Nelson
Kathy and Walter Nicksa
Jo Nol
Julia Powell O'Brien and James O'Brien
Dottie O'Meara
Nancy Pacht
Linda Parent
Marlene Passman
Saul and Joanne Pasternack
Gerald Pastor and Jane Porterfield
Carole Anne Pepe
Kristen M. Phillips and Matthew Schreck
Dina Plapler and Earl McMahon
Rochelle Pleet
Leslie Pollack
Roberta W. Prescott* and Robert O.
Hurwitz*
Susan Rathgeber
Martey S. Rhine
Margaret and Charles Rich
Margaret Rick
Judith Rifkin
Christina and Ezra Ripple
Robert Rodner
Sari and Jim Rosokoff
Marjorie Ross
Barbara Rubin
Linda Ryan
Jennifer and Christian Sager
Larry Samplatsky and John Tackus
Phyllis and Austin Sheridan
Dina Silva
Mary Silverberg and Joseph Kolczynski

The Carol Sirot Foundation
Jen and Kenneth Siskind
Gilbert and Ruth L. Small
Leslie Smith and Philip Wellman
Kevin and Marcia Smith
Larry Starr
Kate Steven
Dot and George Stone
Donna M. and Sam Stout
Mervyn Strauss
Robert H. Tabshey
Eleanor D. Tener
Ruth G. Timme Family Foundation
Mary Lee Morrison
Hope W. Vath
Theresa Waltz
Linda Webber
Judith and Joel Weisman
Peter M. and Ellen T. Zeman
*deceased

SEASON 24 / 25

SUBSCRIBE NOW

FEVER DREAMS (of Animals on the Verge of Extinction)

by Jeffrey Lieber

OCT – NOV

A steamy, decades-long affair. A remote cabin. An unexpected visitor. This is only the beginning of this explosive new comic thriller full of surprising twists, dark secrets, and broken cabinets. The New England premiere that “strikes us like a streak of lightning” (Broadway World) from the mind of writer Jeffrey Lieber, co-creator of the hit television series LOST.

KING JAMES

by Rajiv Joseph

JAN – FEB

It’s 2004. LeBron James is just the hero Cleveland needs. Two strangers eat, sleep, and dream in the language of basketball while forging a deep bond over their worship of the “King” - one of the greatest NBA players of all time. From Pulitzer Prize-finalist Rajiv Joseph, this wonderfully funny and remarkably moving new play explores the power of friendship and brotherhood in modern fandom.

PRIMARY TRUST

by Eboni Booth

APRIL – MAY

Kenneth is a 38-year-old bookstore worker who spends his evenings sipping mai tais at the local tiki bar. When he’s suddenly laid off, Kenneth is forced to face a world he’s long avoided – with transformative and even comical results. The 2024 Pulitzer Prize-winning play by Eboni Booth is a touching and inventive tale of lost dreams, new beginnings, and old friends that “restores your faith in theater’s storytelling powers” (NY Observer).

YOUR NAME MEANS DREAM

by José Rivera

MAY – JUNE

We’re in the not-too-distant future. Aislin is old, and isolated, in her messy New York City walk-up. She pines for a simpler, analog past, when her son sends a sensational new caretaker who is not quite human... but she’s getting there. The newest work from Academy Award-nominee José Rivera (*The Motorcycle Diaries*, *A Hundred Years of Solitude* on Netflix) is an intimate look at humanity in the digital age.

DREAM

twhartford.org

A love
LIKE THIS



LUX BOND & GREEN

JEWELERS SINCE 1898

46 LASALLE ROAD WEST HARTFORD 860.521.3015
170 GLASTONBURY BLVD. GLASTONBURY 860.659.8510

MOHEGAN SUN WESTPORT WELLESLEY BOSTON CONCIERGE

EVERY BOX



HAS A STORY[®]