

**THEATER  
WORKS  
HARTFORD**

A monarch butterfly is perched on a horizontal metal beam of a complex industrial structure. The structure consists of numerous dark metal beams and supports, creating a dense, geometric pattern. The background is a textured, light-colored wall, possibly brick or stone. The lighting is dramatic, with strong shadows and highlights, emphasizing the metallic surfaces and the intricate design of the structure.

***SANCTUARY CITY***

by **MARTYNA MAJOK**

directed by **JACOB G. PADRÓN**

and **PEDRO BERMÚDEZ**

**March 29 – April 25**

**[twhartford.org](http://twhartford.org)**

## From the Directors

Dear Friends,

When we first encountered Martyna Majok's SANCTUARY CITY, we felt an immediate connection to the story. These are people we knew, whose journey we could illuminate through our shared histories. Timely and deeply poignant, this play deserved our focused attention. So, we set off to explore, uncover, and bring a vision to this production that would allow theatre to do what it does best: bring different people together and help us find our shared humanity.

We began our process last summer when we met in New Haven to read the play out loud and began a series of "deep dives" to find the deepest truth of Martyna's words. We created visual storyboards, elaborate character studies, and even visited the neighborhood of Ironbound in New Jersey (where the play is set) to fully immerse ourselves in the world of the people on the page. Over hours of conversation and creative thinking, we landed on a shared and important guiding question: will a young man (B) ever be able to stop hiding and fully start his life? He is our "portal" into the story about what it means to traverse the harsh realities of a "home" that doesn't love you back as an immigrant.

SANCTUARY CITY is a memory play following the tragic events of 9/11. It is not by chance that Martyna placed this story with such a cataclysmic event as our backdrop. We feel the impact of the tragedy the minute the play begins, and that sense of danger, fear, and suspicion caused by that dark day hovers over the lives of B and G. They find sanctuary with each other through their friendship. In their youthful exuberance, they grab hold of possibility and ground themselves in a sense of a hopefulness for a brighter future. But when G's circumstances change, B's journey comes to a halt, and we are left with more questions than answers.

Memory is not linear and, in a stroke of genius, Martyna structured the play as a series of fragments as B revisits his past. In a time when those seeking a better life are often depicted as anything other than human, we hope our production puts a face to the promise of what could be. We also hope you are transported the minute the lights come down through a kind of "memory language" that evokes an immersive and cinematic experience.

We thank our brilliant cast, the visionary designers, and the hardworking staff of TheaterWorks Hartford for giving us the opportunity to bring this story to life here in Hartford, a sanctuary city itself. A special shout out to our Stage Manager, Tom Kosis, whose leadership and artistry were instrumental in our process.

Finally, we dedicate this show to all the DREAMERS out there, who are making the path brighter with their courage, their love, and their optimism for a better tomorrow.

– Jacob G. Padrón & Pedro Bermúdez

#sanctuarycity



#theaterworkshartford

#twh



#twhartford



# SANCTUARY CITY

by **Martyna Majok**

directed by **Jacob G. Padrón**  
and **Pedro Bermúdez**

## THE CAST

**G**      **SARA GUTIERREZ\***

**B**      **GRANT KENNEDY LEWIS\***

**Henry**      **MISHKA YAROVYOY\***

The play takes place in Newark, NJ and thereabouts (2001-2006)

Set Design	<b>EMMIE FINCKEL</b> (Burry Fredrik Foundation supported)
Costume Design	<b>SARITA FELLOWS</b>
Lighting Design	<b>PAUL WHITAKER</b>
Sound Design	<b>FABIAN OBISPO</b>
Projection & Video Design	<b>PEDRO BERMÚDEZ</b>
Casting Director	<b>STEPHANIE YANKWITT/TBD CASTING</b>
Stage Manager	<b>TOM KOSIS*</b>
Intimacy Coach	<b>MARIE C. PERCY</b>
Assistant Set Design	<b>JUHEE KIM</b>

in partnership with **LONG WHARF THEATRE**

**SANCTUARY CITY** had its World Premiere at New York Theatre Workshop, Jim Nicola, Artistic Director, Jeremy Blocker, Managing Director, 2020

**SANCTUARY CITY** was developed, in part, at the 2018 Sundance Institute Theatre Lab

**SANCTUARY CITY** is presented through special arrangement with TRW PLAYS 1180 Avenue of the Americas, Suite 640, New York, NY 10036. [www.trwplays.com](http://www.trwplays.com)

\* Appearing through an Agreement between this theater and Actors' Equity Association, the Union of Professional Actors and Stage Managers in the United States.

United Scenic Artists, Local USA 829 of the IATSE is the union representing Scenic, Costume, Lighting, Sound and Projection Designers in Live Performance.



TheaterWorks Hartford is celebrating its 38th season as a non-profit, professional theater company. Founded in 1985.

**SANCTUARY CITY** is the 3rd show of the 2023-2024 Season.

TheaterWorks Hartford • 233 Pearl Street • Hartford, CT 06103 • 2024

# WHO



**SARA GUTIERREZ** (G | she/her) is making her TheaterWorks Hartford debut. She is from San Antonio, Texas and received her B.F.A in Acting from Ithaca College in 2019. Past Credits include: Off-Broadway: *Quince* (The Bushwick Starr). Television: *Law & Order*, *Dexter: New Blood*. Sara is deeply honored to be a part of this important play and would like to thank her loving friends and family. A special thank you to her partner Miguel and dog Fresa for always being by her side. She is represented by BRS/GAGE.



**GRANT KENNEDY LEWIS** (B | he/him) is excited to make his TheaterWorks Hartford debut. Regional: Steppenwolf Theatre Company, Drury Lane Theatre, Theater Wit; TV: *Chicago Med*, *The Chi*; Film: *The Premiere*, *Mover's Ultimate*; Education: BA from Northwestern University. "Good judgment comes from experience, and experience comes from bad judgment." Lewis is repped by Gray Talent Group.



**MISHKA YAROVOY** (Henry | he/him) is making his TheaterWorks Hartford debut. Mishka was born in Mexico to a family of Russian musicians. Mishka spent most of his life living between Mexico, Russia, and the United States before settling permanently in the U.S. at the age of 14. A Boston University School of Theatre graduate, his recent credits include: Colorado New Play Summit (Denver Center for Performing Arts); *Chicken and Biscuits* (Front Porch Arts Collective); *Let The Right One In* (Actors' Shakespeare Project); *The Inheritance* (Speakeasy Stage); *As You Like It* (Actors' Shakespeare Project); *Romeo and Juliet* (Apollinaire Theatre); *She Eats Apples* (Boston Artists' Theatre). Film/TV: *Little America* (Apple TV); *Don't Look Up* (Netflix).



**MARTYNA MAJOK** (Playwright) was born in Bytom, Poland and raised in Jersey and Chicago. She was awarded the 2018 Pulitzer Prize for Drama for her play, *Cost of Living*. Other plays include *Queens*, and *Ironbound*, which have been produced across American and international stages. Awards include The Academy of Arts and Letters' Benjamin Hadley Danks Award for Exceptional Playwriting, The Lucille Lortel Award for Outstanding New Play, The Greenfield Prize, (as the first female recipient in drama), The Champions of Change Award from the NYC Mayor's Office, The Francesca Primus Prize, two Jane Chambers Playwriting Awards, The Lanford Wilson Prize, The Lilly Award's Stacey Mindich Prize, Helen Merrill Emerging Playwright Award, Charles MacArthur Award for Outstanding Original New Play from The Helen Hayes Awards, Jean Kennedy Smith Playwriting Award, ANPF Women's Invitational Prize, David Calicchio Prize, Global Age Project Prize, NYTW 2050 Fellowship, NNPN Smith Prize for Political Playwriting, and Merage Foundation Fellowship for The American Dream. Martyna studied at Yale School of Drama, Juilliard, University of Chicago, and Jersey public schools. She was a 2012-2013 NNPN playwright-in-residence, the 2015-2016 PoNY Fellow at the Lark Play Development Center, and a 2018-2019 Hodder Fellow at Princeton University. Martyna recently wrote a musical adaptation of *The Great Gatsby*, with music by Florence Welch and Thomas Bartlett, and is developing TV and film for HBO, Plan B, and Pastel.



**JACOB G. PADRÓN** (Director | he/him/his) is the Artistic Director of the Tony Award-winning Long Wharf Theatre in New Haven where he is leading the company through a historic transformation as they adopt a new producing model to bring theatre to all. He is also the Founder and Co-Artistic Director of

The Sol Project, an Obie Award-winning theatre initiative that works in partnership with leading theaters to amplify the voices of Latiné playwrights in New York City and beyond. Since its launch, The Sol Project has championed and co-produced new work by Hilary Bettis (*Alligator*), Martín Zimmerman (*Seven Spots on the Sun*), Luis Alfaro (*Oedipus El Rey*), Charise Castro Smith (*El Huracán*), and Guadalís Del Carmen (*Bees & Honey*), among many others. Jacob has held senior-level artistic positions at theatre companies across the country. He was the Senior Line Producer at New York's Public Theater where he worked on new plays, new musicals, and Shakespeare in the Park. He was formerly on the artistic staff at Steppenwolf Theatre Company in Chicago where he oversaw the artistic programming in the Garage – a space dedicated to new work, new artists, and new audiences. From 2008 to 2011, he was an Associate Producer at the Oregon Shakespeare Festival where he was instrumental in producing all shows in the repertory. Under the leadership of his late mentor, Diane Rodriguez, Jacob was the producer of Suzan-Lori Parks' *365 Days/365 Plays* for Center Theatre Group, a collaboration that included hundreds of theatre artists across Los Angeles. He has directed for National Queer Theater, Yale Cabaret, Baltimore Centerstage, Teatro Vista, and will make his LWT directing debut this winter. Originally from Gilroy, California, Jacob holds a BA from Loyola Marymount University and an MFA from Yale School of Drama. In 2023 he was named Person of the Year by the National Theatre Conference. His first artistic home was Luis Valdez's *El Teatro Campesino*.



**PEDRO BERMÚDEZ** (Director) is a filmmaker working at the intersection of cinema, theater, and immersive media. His documentary and narrative work has explored the dynamics of colonialism and their effects on culture. In partnership with Connecticut Public, Pedro produced the documentary *Collision Course* in 2019, which was awarded a regional Emmy. He has

collaborated closely with arts and cultural institutions in the Hartford region: the Wadsworth Atheneum Museum of Art and The Center for Leadership & Justice among them. His most recent work in theater, a filmed production of *The Sound Inside*, co-directed with Rob Ruggiero, was featured in The New York Times. He received his MFA in Directing from the American Film Institute where he was the recipient of the Petrie Award for excellence. Pedro is the owner of Revisionist, a video production company based in Hartford. Revisionist has worked with a range of commercial clients including Nike, Bank of America and international non-profit BuildOn. Bermúdez teaches courses in video production at Wesleyan University where he also manages the Digital Design Commons.



**EMMIE FINCKEL** (Set Design | they/them) is a queer, Asian-American scenic designer. Recent credits include *Becoming A Man* (A.R.T.), *The Hot Wing King* (Hartford Stage), *Comedy of Errors* (Public Theater: Mobile Unit), *the ripple, the wave, that carried me home* (Yale Repertory Theater), *As You Like It* (La Jolla Playhouse), *53% Of* (2nd Stage), *In the Southern Breeze* (Rattlestick

Playwright's Theatre), *The Watering Hole* (Signature Theatre), *In the Penal Colony* (NYTW Next Door), *Athena* (JACK), *Riot Antigone* (La MaMa).

Associate design credits include many productions with Gabriel Evansohn (KPOP - Broadway, *Empire Travel Agency*) as a member of Woodshed Collective. Emmie holds a BA from Wesleyan University and an MFA from the Yale School of Drama, and is currently on the faculty of the Playwrights Horizons Theater School at NYU. [efinckel.com](http://efinckel.com).



# WHO



**SARITA FELLOWS** (Costume Design) was born in Freetown, Sierra Leone. Her more recent works include projects such as *Death of a Salesman*, Broadway; *The Ally*, The Public Theater; *Drinking in America*, Audible Minetta Lane Theater; *Theater of the Mind*, Denver Center for the Performing Arts; *Elyria*, Atlantic Theater Co; *Blues for An Alabama Sky* and *Sweat*, Guthrie Theater; *Joy and Pandemic*, and *Our Daughters Like Pillars*, Huntington Theatre; *Loving and Loving*, Actors Theater of Louisville; *Seize The King*, Alliance Theater; *A Bright Room Called Day*, Public Theater; *Fefu and Her Friends*, American Conservatory Theater. *Odyssey*, Acting Theater Co; *Bite Me*, WP Project. In the dance world, Sarita has worked with choreographers such as Liz Lerman and Edisa Weeks. MFA in design from Tisch School of Design. Awarded Outstanding Achievement in Costume Design (The National Black Theater Festival 2022). Lily Award (2020).

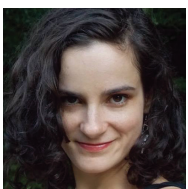


**PAUL WHITAKER** (Lighting Design) TheaterWorks Hartford: *The Dazzle*, *Ten Unknowns*, *Rounding Third*. New York credits include work at The Public Theater, MCC Theater, Playwrights Horizons, Second Stage Theatre, Atlantic Theater Company and others. Regional credits include The Guthrie, The Alley, Yale Repertory Theatre, The Denver Center, The Geffen Playhouse, South Coast Repertory, La Jolla Playhouse, The Children's Theatre Company, Long Wharf Theatre, The Huntington Theatre Company, Center Stage, Hartford Stage, Dallas Theater Center, Minnesota Opera, San Diego Opera, and others. Paul is a Partner at Schuler Shook, a theatre planning and architectural lighting firm. [schulershook.com](http://schulershook.com) [paulwhitakerdesigns.com](http://paulwhitakerdesigns.com)



**FABIAN OBISPO** (Sound Design) returns to TheaterWorks Hartford where his credits are *Broke-ology*, *God of Carnage* and *The Motherf\*\*ker with the Hat*. Recent off-Broadway credits include Public Theater's *Oedipus El Rey* (Hewes nomination), MaYi's *The Chinese Lady* (Lucille Lortel nomination), and his musical *Felix Starro*. Regional credits include Arena

Stage's *Angels in America* (Helen Hayes nomination), Alliance Theater's *Bina's Six Apples* (Suzi Bass nomination), Long Wharf Theatre's *The Chinese Lady* (CT Critics Circle nomination) and American Conservatory Theater's *Imaginary Invalid* (Bay Area Critics Circle nomination). His music for the movie *Vancouver* was awarded best original score by the International Motion Picture Award, LA Film Festival's Indie Short Fest Award and South Film And Arts Academy Festival Award. On TV, he wrote the original music for *20 Years of Asian American Playwriting*, a PBS documentary. He is also a recipient of the Berkshires Theatre Critics Award and the Barrymore.



**MARIE PERCY** (Intimacy Director) is also a Yoga Teacher, Choreographer, and Movement Specialist based in Connecticut. She is co-founder and Chief Creative Officer of Intimacy Directors and Coordinators (IDC). Marie has spent over ten years training actors in an academic setting, and her students can be seen performing in national tours, national commercials,

regional theaters, and beyond. Recent Intimacy Direction work includes *Clyde's* at TheaterWorks Hartford, *B.R.O.K.E.N Code B.I.R.D Switching* at the Unicorn Theater, and *Rent* at Connecticut Rep. To learn more about Intimacy Direction head to [idcprofessionals.com](http://idcprofessionals.com)



**TBD CASTING CO. / STEPHANIE YANKWITT AND NIA SMITH** (Casting) With TheaterWorks Hartford: *Clyde's*, *The Rembrandt*. With Long Wharf: *A View From The Bridge*, *Jelly's Last Jam*, *Flying Bird's Diary*. Select Credits, TV/Film: *In The Summers* (Lexicon/Exile, 2024 Sundance Grand Jury Prize), *Growing Up* (Disney+). Broadway: *Frankie and Johnny in the Clair de Lune*.

Current/Upcoming in NYC: *Public Obscenities* (TFANA), *Here There Are Blueberries* (NYTW/Tectonic), *Isabel* (NAATCO), and *The Fires* (Soho Rep). Regional work includes ongoing work with La Jolla Playhouse & Shakespeare Theatre Company. Resident casting office for Soho Rep & Tectonic Theater Project. [tbdcastingco.com](http://tbdcastingco.com) @tbdcastingco



**ROB RUGGIERO** (Artistic Director) has been a part of TheaterWorks Hartford's artistic leadership for 30 seasons. He has directed over 70 shows, including TWH productions of *Fun Home*, *The Sound Inside*, *American Son*, *The Legend of Georgia McBride*, *Constellations*, *Next to Normal*, *Relativity* (starring Richard Dreyfuss), and *Christmas on the Rocks*, which he also conceived. His Broadway credits include *Looped* (starring Valerie Harper in a Tony-nominated performance) and *High* (starring Kathleen Turner) which had its world premiere at TWH. He also conceived and directed the musical revue *Make Me a Song: The Music of William Finn* which moved off-Broadway and was nominated for Drama Desk and Outer Critics Circle Awards. Rob conceived and directed *Ella*, a musical about Ella Fitzgerald, which saw sold-out runs in 24 regional theaters and was produced as a National Tour. His work on plays and musicals has received multiple awards in Connecticut and around the United States. Rob regularly directs at Goodspeed Musicals where over his 16-year relationship he has directed many award-winning musical productions including this spring's *The Mystery of Edwin Drood*. Internationally he directed *Fiddler on the Roof* in Athens, Greece.



**MIKE LENAGHAN** (Director of Production) This season is Mike's 12th with TheaterWorks Hartford. Mike's professional career began at Goodspeed Musicals, followed by Juilliard School's Production Department, and Westport Playhouse. Broadway credits include *Thoroughly Modern Millie*, *Our Town* and *Fortune's Fool*. Off Broadway: *The It Girl*, *Suburb* and *The Summer of '42*.

**TOM KOSIS** (Production Stage Manager) recently stage managed TheaterWorks Hartford productions of *The Garbologists*, *Lizzie*, *Clyde's*, *The Rembrandt*, *Secondo* and *Christmas on the Rocks*. Tom's Broadway credits include *Mary Poppins*, *Side Show*, *The Scarlet Pimpernel*, *Flower Drum Song*, *Bye Bye Birdie*, *A Chorus Line*, *Ann*, *My Fair Lady*, *Grand Hotel*, and *Nice Work If You Can Get It*. Other New York and Touring credits include *The Radio City Music Hall Christmas Spectacular*, *Irving Berlin's White Christmas*, *A Chorus Line*, *Song & Dance*, *West Side Story* and *Dreamgirls*. [tomkosis.com](http://tomkosis.com)

**ACTORS' EQUITY ASSOCIATION** ("Equity"), founded in 1913, is the U.S. labor union that represents more than 51,000 professional Actors and Stage Managers. Equity fosters the art of live theatre as an essential component of society and advances the careers of its members by negotiating wages, improving working conditions and providing a wide range of benefits, including health and pension plans. Actors' Equity is a member of the AFLCIO and is affiliated with FIA, an international organization of performing arts unions. #EquityWorks.

## THANKS

AC Lighting, Mary Bujeaud, Shana Cooper, CT Students for a Dream, Adriana Gaviria, Hartford Stage, Kit Ingui, Long Wharf Theatre, Anghy Idrova, Kevin Jaigua, Justin Keyes, Keith Lewandowski, David Mendizábal, Sandra Marquez, Fred Mikeska, Jessica Durdock Moreno, Emily Nacco, Isabel Pask, Stephanye Rios, Christian Roman, Akasha Sherwani, The Sol Project

## THANKS FOR MAKING THINGS HAPPEN



Hartford  
Foundation  
FOR PUBLIC GIVING



BANK OF AMERICA



GREATER HARTFORD  
ARTS COUNCIL



NASSAU

TRAVELERS

The Edward C. & Ann T.  
Roberts  
FOUNDATION

Lincoln  
Financial Foundation



HSB



Raytheon  
Technologies

cthumanities



Bank

America's Most Convenient Bank®

Connecticut  
still revolutionary

THE SHUBERT  
FOUNDATION INC.

Richard P. Garmany Fund at the Hartford Foundation for Public Giving

The Burry Fredrik Foundation

Cheryl Chase and Stuart Bear Family Foundation

Ensworth Charitable Foundation, Bank of America, N.A., Trustee

John and Kelly Hartman Foundation

The George A. & Grace L. Long Foundation, Bank of America, Co-Trustee

William and Alice Mortensen Foundation

The Elizabeth M. Landon and Harriette M. Landon Charitable Trust

The Katherine K. McLane and Henry R. McLane Charitable Trust

Liberty Bank

M&T Bank

The  
Goodwin  
Hartford's boutique hotel

The Goodwin is the official hotel of TheaterWorks Hartford.

## OUR COMMUNITY PARTNERS

Need a hand or have a hand to lend?



Connecticut Institute for  
Refugees and Immigrants  
*Strengthening Communities Since 1918*

[cirict.org](http://cirict.org)

wOrld

affairs council  
CONNECTICUT

[ctwac.org](http://ctwac.org)

iris

INTEGRATED REFUGEE  
& IMMIGRANT SERVICES

[iristct.org](http://iristct.org)



250 YRS  
HARTFORD  
PUBLIC LIBRARY

THE AMERICAN PLACE

[tap.hplct.org](http://tap.hplct.org)



## STAFF

Artistic Director  
**Rob Ruggiero**

Producing Associate  
**Kate J. Cudworth**

Director of Production  
**Mike Lenaghan**

Company Manager/  
Costume Supervisor  
**Cecelia Chapman**

Assistant Technical Director  
**David Weaver**

House Electrician  
**Sasha Wahl**

Assistant Stage Manager/  
Wardrobe  
**Jennifer Kiefer**

Director of Marketing/  
Communications  
**Freddie McInerney**

AOCA Fellow/Social Media  
**Joël Cintron**

IT Consultant  
**Dean Batchelder**

Managing Director  
**Jeff Griffin**

Director of Development  
**Dina Silva**

Development and Community  
Engagement Associate  
**Erica Tracy Sullivan**

General Manager  
**Nicole LaFlair Nieves**

Business Associate  
**Yaasmeen Cook**

Director of Audience  
Administration  
**Joshua Demers**

House Manager  
**Chloe Anderson**

Audience Services  
**Mailina Betsey-Chambers**  
**Gabriela Santiago**

Facilities Manager  
**Bill Farquhar**

Bartender  
**Alex Rocha**

Janitorial  
**Chris Williams**

---

## SANCTUARY CITY CREW

Audio Visual Supervisor  
**Adam Bintz**

Projections Programmer  
**Mark Williams**

Sound Board Operator  
**Gavin Mastell**

Electricians  
**Nicole Rivera**  
**Megan O'Brien**  
**Jayne Carlman**

Scenic Charge  
**Kelly Daigneault**

Props  
**Kelly Daigneault**

Load In Crew  
**Sara Dorinbaum**  
**Kailey Linden**  
**Josh Murphy**

Run Crew  
**Cali Holt**

## BOARD

**Michael G. Albano (Co-President)**

**Dina Plapler (Co-President)**

**Kristen Phillips (Vice President)**

**Larry Samplatsky (Treasurer)**

**Stephanie A. Johnson (Secretary)**

**Jennifer DiBella (Asst Secretary)**

**Justis Bolding**

**Fernando Ferro**

**Grace Figueredo**

**Christopher R. Hayes**

**Gordon Hui**

**Lee G. Kuckro**

**Françoise A. Miller**

**Felix Okwaning**

**Robert Pulito**

**Joshua C. Torrence**

**Christopher White**

# ANNUAL FUND DONORS

## PLATINUM PARTNERS

Gifts of \$25,000+

Cheryl Chase and Stuart Bear Family Foundation  
The Hoffman Family  
The Richard P. Garmany Fund at HFPG  
LAZ Parking  
Marjorie E. Morrissey  
Ruth G. Timme Family Foundation  
Theresa Waltz

---

## GOLD PARTNERS

Gifts of \$10,000+

Common Sense Fund  
ETCH  
Robert and Francine Goldfarb  
Suzanne M. Hopgood  
Christine Hunihan\*  
Ted and Adlyn Loewenthal  
Thomas W. and Emily B. Nissley  
Kristen M. Phillips and Matthew Schreck  
Dina Plapler and Earl McMahon  
Dr. Anne Rothstein and Jane Hellman  
Jonathan and Sherry Schreiber

---

## SILVER PARTNERS

Gifts of \$5,000+

Anonymous  
Andrew Benator  
Grace Figueredo and Ken Gostyla  
Ted and Kathy Fleming  
Helen and Henry Frye  
Floyd W. Green, III  
William Knight and Jill Adams  
The Elizabeth M. Landon and Harriette M. Landon Charitable Foundation  
Joy McConnell  
The Katharine K. McLane and Henry R. McLane Charitable Trust  
Francoise and Hans Miller  
Larry Samplatsky and John Tackus  
Elizabeth Schiro and Stephen Bayer  
Kevin and Marcia Smith  
Elizabeth Vandeventer  
The Zachs Family Foundation

---

## BRONZE PARTNERS

Gifts of \$2,500+

Doug and Sheryl Adkins  
Anonymous  
Staci Bachman  
Ivan A. Backer\* and Paula Fisher  
Jacqueline Berkowitz  
James Bruno and William Gratz  
Stacy Brusa

**BRONZE PARTNERS** (continued)

Gifts of \$2,500+

Amy Charney and Lewis K. Wise  
 The Estate of Rose Marie Cilia  
 The Gawlicki Family Foundation  
 Catherine Godin  
 Peter Grzybala and Diane Korntheuer  
 Angeline and David Hein  
 Lee G. Kuckro  
 Marcia Lattimore  
 Jia Luo and Michael Monts  
 Kenneth and Cynthia Malm  
 Marks Family Foundation  
 Jill and Martin Mass  
 Eric D. Ort and Duff Ashmead  
 Joan and Barry Richter  
 James M. Salemi and Kenneth J. Bartschi

**LEADING DONORS**

Gifts of \$1,000+

Michael G. Albano and Nancy B. Alisberg	Gordon and Kelly Hui
Liz Armstrong	Douglas and Tita Hyland
Ann Azevedo and Donato T. DiGenova	Sharon and David Jepson
Thomas O. and Melanie A. Barnes	Stephanie Johnson
Peter and Lisa Block	Donna M. and John Kidwell
George Bouthet	David and Jan Klein
Abhishek Bulusu	Dr. and Mrs. Bernard Kosto
Claire Burns	Wally and Chris Lamb
Karen K. Byrne	Christopher Larsen
Ann M. Catino	Judy Lewis
Alison and Tony Caxide	Steve and Sheila Litchfield
Jonathan Clark	Kathleen Lovell
Tammy Conley and Roselinde Torres	Barri R. Marks and Woody Exley
James and Sheryll-Ann Covill	Leta W. Marks
Richard A. and Aida Cyphers	Susan Monks
Catherine Daly and Roy Dion	Richard E. and Paula Musgrave
Jack and Alice Ellovich	Barbie Nadal-Cristofaro and Victor Cristofaro
Diane Ellsworth	Beverly and Charles Michael
Fernando Ferro and Jane Owen	O'Halloran
Muriel and Karl Fleischmann	Bill and Joy O'Sullivan
Jerry and Ida Franklin	Felix Okwaning
William Fuller	Richard Orr and Cynthia Courtney
Peter and Melissa Gambardella	Gerald Pastor and Jane Porterfield
Carol and Peter Ganick	Robert and Margaret Patricelli
Tom and Cynthia Garten	Susan Pollard
Ken and Jennifer Geisler	Roberta W. Prescott* and Robert O. Hurwitz*
William T. Gough and Jane Cook	
Laura Harris	Bob and Patti Pulito
Hartford Lumber Company	Joan and Allan B. Reiskin
Brian E. Harvey and Sherry A. Manetta	Linda L. and Stephen E. Revis
Christopher Hayes	Annemarie H. Riemer
Elaine Hobart	Christina and Ezra Ripple
Susan Holmes and Bessy Reyna	Joel and Susan Rottner



# ANNUAL FUND DONORS

## LEADING DONORS

Gifts of \$1,000+

Rob Ruggiero	Donna M. and Sam Stout
Mary Beth Russell	Robert H. Tabshey
Pedro Segarra and Charlie Ortiz	Allan B. and Sally S. Taylor
The Carol Sirot Foundation	Jeff Rudikoff and Edee Tenser
Helen and Nelson Sly	Christopher White and Patrick Langevin
Jeff Snyder	Mara A. Whitman and Marc Edrich
Karen Lee Snyder	Randall Wilcox and Richard Costabile
Sally Speer	Dale Paul Woodiel, Jr.
Robert Stillman and Leslie Fass	Dale Woodiel, Sr. and Linda Rountree

---

## LOYAL SUPPORTERS

Gifts of \$250+

Accounting Resources, Inc.	Keith R. Cudworth
Acorn-Alcinda Foundation	Evan Cowles and Brie Quinby
Victoria F. and Leonard Albert	Jennifer and Marc A. DiBella
P. K. and Phoebe R. Allen	Sharon F. and George Dickerman
Gregory and Mona Anderson	Deirdre and Tom Dillow
Ruthellen C. and Norman H. Gahm	Heather and Philip Dilorenzo
Sandy Fromson	Michele and John L. Dolan
R. Kingsbury and Barbara Chase	Hollis Dorman
Anonymous Donations	Maureen and James E. Dougherty
Carolyn Arabolos	Lise Doutre
Kathleen and Thomas Archambault	Beverly and Chris Doyle
Joyce and Richard Armstrong	Melissa J. Taylor-Doyle and Chris Doyle
John R. and Angela Arrington	Ms. Mary-Jane Eisen and Robert K. Yass
Stephen and Judy August	Carolyn Emerson
Anthony and Beverley Bellisio	William and Joan Farquhar
Catherine and Bruce Bernstein	David and Peggy Fay
Jon D. and Cheryl Bertus	The Fechter Family Foundation at HFPG
Paul and Joanne Bourdeau	Richard and Georgia Feigel
Julianne and Norman Boyd	Stanley and Susan P. Fellman
Whitney Boynton and Kevin Galvin	Jocelyn and Dan Fenyn
John Brancato	Michael and Evelyn Fishman
Joanne and Peter Brandien	Catherine Franks
Joel Brehm and Rodney Dugas	Rachel Galligan
James and Riki Brodey	Alice and Gary Gold
Julie A. Brogan and Christopher A. Uhrich	Linda and Ira Goldman
Luke and Sara Bronin	Robert and Lee Goode
Ellen M. Brown	Pamela and Barry Gordon
Boguslaw Buczek	Dan Greden
Avery and Eileen Buell	Daniel G. Green and Walter Langner
Alison Burns	Valentin and Greta Gribkoff
Mary Busick and Michael Ungaro	David and Rachel Griffin
John and Marla Byrnes	Pierre and MaryEllen Guertin
Mary and Ritchard Cable	Kimberly Harrison
John Cariani	Frank Haviland and Shirley Mae Neu
Ann Clark and David Ehler	Ronald V. and Patricia Hensley
Linda F. Cohen	Hillary Huttenhower
Steven and Elaine Cohen	Warren Hollister
Dennis Cole	Polly Huntington
James P. Condren and Ellen J. Robinson	Bradley and Lisa Hurley
Audrey Conrad	Karen Isaacs
Susan B. Coogan	Valerie and Mathew Jasinski
Carol Coppia	James J. Keller and Candice M. Chirgotis
Paula K. Corrao	David Kelly and Keyne B. Reid

## LOYAL SUPPORTERS

Gifts of \$250+

Kathy and Edward Kennedy  
 Kitchen and Bath Design Construction  
 Myra R. and William Kleinman  
 Bradford Korder  
 Wendy Kwalwasser  
 Susannah Landis  
 Ann and Bill Lazarek  
 William and Deanna Leikin  
 Gary and Debbie Letscher  
 Doreen Linton  
 Barbara and Bing Liu  
 Guy and Sharon Marhewka  
 Eileen M. Marks and Ed Mikolowsky  
 Judy and Merrill Marks  
 Jeffrey Amell and Mary S. Martin  
 Erin McGurk  
 Peggy and Alan Mendelson  
 Donald N. and Regina M. Miller  
 Barbara Mitchell  
 Brian Molinari and Kristan Pierz  
 Danielle K. and Jim Naylor  
 Kathy and Walter Nicksa  
 Don Noel  
 Rod O'Connor  
 Joseph Pace  
 Alan and Jennifer Panecasio  
 Scott and Susanne Pape  
 Alan and Michele Parker  
 The Estate of Marlene G. Passman  
 Richard and Robin Pearson  
 MaryJane Perrier  
 Randi and Steve Piaker  
 Raphael Podolsky and Jill Mehler  
 Leslie Pollack  
 Frances Porter  
 Laura Post and Mark Pazniokas  
 Sandra and George Pruce  
 Naomi H. Rafalowicz  
 Jo-Anne Rankin and John Williams  
 Ann Reed  
 Patricia and Edgar Reed  
 Rebecca M. Rehel and Suzanne E. Caron  
 Margaret and Charles Rich  
 Frank Rizzo  
 Jo Ann Roberts

Nancy and Stephen Roberts  
 Sandra H. and Marshall Rulnick  
 Peter Rusconi  
 William Goba and Joan Russoniello-  
 Goba  
 Jennifer and Christian Sager  
 Linda M. Samoncik  
 Martha Sandefer and Frederick Sweitzer  
 Dency C. Sargent  
 Carolyn and Frank Sataline  
 Phyllis Satter  
 Roberta P. and Philip A. Schmidt  
 Malcolm and Sally Schneider  
 Leon H. and Brenda Seitelman  
 Sandra L. Shaner  
 Gale and Larry Shapiro  
 Claire E. Shea  
 Phyllis and Austin Sheridan  
 Debbie and Jim Shmerling  
 Joseph Shortell and Sara Bernstein  
 Barbara Sicherman  
 Penny and Steve Sigal  
 Dina Silva  
 Douglas and Roberta Simpson  
 Richard and Raimi Slater  
 Gilbert and Ruth L. Small  
 Leslie Smith and Philip Wellman  
 Sharon Smith  
 Shirley Smith  
 Tyler Smith and Lyn Walker  
 Ruth and Howard Sovronsky  
 Catherine J. Spera  
 Felix J. and Helene L. Springer  
 Beatrise Srams  
 Glenn Stanisewski  
 Larry Starr  
 Barbara and Leon Stechenberg  
 Stacey Stone  
 Roberto Tollis and Peter Chester  
 Maria Tsitsirides  
 Arthur Edward Webster  
 Robert and Penelope Whalen  
 Gretchen H. Wiedie  
 Arnold and Myrna Wyse  
 Elliot Zweig and Doreen Fundiller-Zweig

\*deceased




AN OASIS OF CLASSICAL AND CLASSIC MUSIC

WMNR.ORG

88.1FM 91.5FM 90.1FM

# THE ROB RUGGIERO INNOVATION FUND

Michael G. Albano and Nancy B. Alisberg  
P. K. and Phoebe R. Allen  
R. Kingsbury and Barbara Chase  
Mr. Peter Arakas and Ms. Karen Kellerman  
Virginia Argenio  
James E. and Karen Bachman  
Ivan A. Backer and Paula Fisher  
Lynn Beaulieu and Gerry Lupacchino  
Martha and Bob Belliveau  
John and Laura Berman  
Vanita Bhalla  
John W. Bialobrzeski and Janet Rooney  
Geraldine L. and Vern A. Biederman  
Anne and Bruce Bowman  
Patti Broad  
Chester and Glenna Brodnicki  
James Bruno and William Gratz  
Ken Byer and Anthony Michalak  
Patricia Carrigan  
Polly Champ  
Ted Chapin  
Martin and Lorry Clayman  
Patrick and Elena Coffey  
Catherine Conlin  
Susan B. Coogan  
Evan Cowles and Brie Quinby  
Keith R. Cudworth and Jane Coughlin\*  
Marisa Dal Ponte  
Marjorie and Ronald Debold  
Ms. Nancy M. Depalma  
Jennifer and Marc A. DiBella  
Sharon F. and George Dickerman  
Marian Dziama and Karen Cormier  
Susan Fay  
Art Feltman and Dale James Wallington  
Muriel and Karl Fleischmann  
Joan Fox  
Arthur Franklin  
Jerry and Ida Franklin  
Catherine Franks  
Helen and Henry Frye  
Michael Fuss  
Barbara Gallo  
Carol and Peter Ganick  
Ken and Jennifer Geisler  
Kathleen Gilrain  
Robert and Francine Goldfarb  
Felice Goldman  
Firooz and Maria Golkar  
William T. Gough and Jane Cook  
Eileen Griffin  
Lillian G. Harter  
Ronald V. and Patricia Hensley  
Warren Hollister  
Beverly J. and Richard L. Hughes III  
Polly Huntington  
Susan Huntington  
Sandra Jacobus  
Valerie and Mathew Jasinski  
Evan H. Johnson and Kevin Chick  
James J. Keller and Candice M. Chirgotis  
Judith and Richard T. Keppelman  
Kitchen and Bath Design Construction  
Dr. Alan and Lydia Klatsky  
David and Jan Klein  
Linda Koflanovich  
Michele and Dane Kostin  
Darwin W. and Susan Kovacs  
Lee G. Kuckro  
Nancy and Jerry Lahman  
Supriya and Vijay Laknidhi  
Annette Landry  
Christopher Larsen  
Marcia Lattimore  
John W. and Joyce R. Lemega  
Sherwood and Gwendolyn Lewis  
Peggy Lorence  
Betsy MacDermid  
Diane Mack and Robin Gilmartin  
Glen MacLeod  
David T. and Judith W. Macri  
Gloria Magliozzi  
Lenore Mand  
Judith C. and David L. McChesney  
Joy McConnell  
Kenton McCoy





Thomas and Marjorie Michalski  
Donald N. and Regina M. Miller  
Rachel Miller  
Marjorie E. Morrissey  
Richard E. and Paula Musgrave  
Barbie Nadal-Cristofaro and Victor  
Cristofaro  
Wilbur J. and Amy Sevell Nelson  
Kathy and Walter Nicksa  
Jo Nol  
Julia Powell O'Brien and James O'Brien  
Dottie O'Meara  
Nancy Pacht  
Linda Parent  
Marlene Passman  
Saul and Joanne Pasternack  
Gerald Pastor and Jane Porterfield  
Carole Anne Pepe  
Kristen M. Phillips and Matthew Schreck  
Dina Plapler and Earl McMahon  
Rochelle Pleet  
Leslie Pollack  
Roberta W. Prescott\* and Robert O.  
Hurwitz\*  
Susan Rathgeber  
Martey S. Rhine  
Margaret and Charles Rich  
Margaret Rick  
Judith Rifkin  
Christina and Ezra Ripple  
Robert Rodner  
Sari and Jim Rosokoff  
Marjorie Ross  
Barbara Rubin  
Linda Ryan  
Jennifer and Christian Sager  
Larry Samplatsky and John Tackus  
Phyllis and Austin Sheridan  
Dina Silva  
Mary Silverberg and Joseph Kolczynski

The Carol Sirot Foundation  
Jen and Kenneth Siskind  
Gilbert and Ruth L. Small  
Leslie Smith and Philip Wellman  
Kevin and Marcia Smith  
Larry Starr  
Kate Steven  
Dot and George Stone  
Donna M. and Sam Stout  
Mervyn Strauss  
Robert H. Tabshey  
Eleanor D. Tener  
Ruth G. Timme Family Foundation  
Mary Lee Morrison  
Hope W. Vath  
Theresa Waltz  
Linda Webber  
Judith and Joel Weisman  
Peter M. and Ellen T. Zeman  
\*deceased

PRODUCING PARTNERS

**SUZANNE HOPGOOD**  
in Memory of Frank Lord



SUPPORTING PARTNERS

**CT HUMANITIES**



SEASON PARTNERS

**RICHARD P. GARMANY FUND**

at the Hartford Foundation for Public Giving

**MARJORIE E. MORRISSEY**

**BURRY FREDRIK FOUNDATION**

