

LIZZIE

A woman with blonde hair, wearing a black bra and black shorts, is playing a white electric guitar. She is standing on a black metal stool. The background is a solid red color. The overall style is reminiscent of a vintage rock poster.

a Rock Concert in 40 Whacks

**THEATER
WORKS
HARTFORD**

twhartford.org

From the Director

In August of 1892, Lizzie Borden was accused of brutally murdering her father and stepmother with an axe. Testimonies were muddled, evidence incomplete and the case was never solved. Over a century later, we're still examining the infamous story behind the nursery rhyme "Lizzie Borden took an axe, gave her mother forty whacks." LIZZIE delves into the mysterious mind of Lizzie Borden and speculates about her possible motivations: loss of inheritance, sexual oppression, abuse... madness.

It has been an honor and thrill to direct a musical that speaks deeply to me in its raw, unapologetic, raging rock feminist voice. It is a voice for the marginalized, the furious, oppressed and ignored. For our queer community and anyone that's been told "young girls cannot go and do and have." It is for the Lizzie in all of us.

– Lainie Sakakura

SEASON PRODUCING PARTNERS

RICHARD P. GARMANY FUND
at the Hartford Foundation for Public Giving

MARJORIE E. MORRISSEY

BANK OF AMERICA 

BURRY FREDRIK FOUNDATION

cover art by Rich Hollant / CO:LAB

LIZZIE has been developed with the assistance of tiny mythic theatre company, HERE Arts Center, Took An Axe Productions (Hillary Richard & Peter McCabe), Brisa Trinchero/Corey Brunish (Make Musicals) and Van Dean/Kenny Howard (Broadway Consortium).

LIZZIE was presented at the National Alliance for Musical Theatre's Festival of New Musicals in 2010 and further developed by Village Theatre, Issaquah, Washington (Robb Hunt, Executive Producer • Steve Tomkins, Artistic Director).

LIZZIE was produced by Theatre Under The Stars, October 2013.

The West Coast Premiere of LIZZIE was produced by Portland Center Stage, Chris Coleman, Artistic Director.

Original European and London premiere produced by Fredericia Theater and Soren Moller, Denmark.

LIZZIE is presented by special arrangement with Broadway Licensing, LLC.
(www.broadwaylicensing.com)

To purchase recordings and sheet music, or for more information, please visit:
www.LizzieTheMusical.com

*Appearing through an agreement between this theater and Actors' Equity Association, the Union of Professional Actors and Stage Managers in the United States

United Scenic Artists, Local USA 829 of the IATSE is the union representing Scenic, Costume, Lighting, Sound and Projection Designers in Live Performance.

LIZZIE is the 1st show of the 2023-2024 Season
TheaterWorks Hartford • 233 Pearl Street • Hartford, CT 06103 • 2023

LIZZIE

a Rock Concert in 40 Whacks

Music by **STEVEN CHESLIK-DEMEYER** and
ALAN STEVENS HEWITT

Lyrics by **STEVEN CHESLIK-DEMEYER**
and **TIM MANER**

Book by **TIM MANER**

Additional Music by **TIM MANER**

Additional Lyrics by **ALAN STEVENS HEWITT**

Based on an original concept by **STEVEN CHESLIK-DEMEYER** and
TIM MANER

Orchestrations by **ALAN STEVENS HEWITT**

THE CAST

(in alphabetical order)

Emma Borden	COURTNEY BASSETT*
Alice Russell	KIM ONAH*
Bridget Sullivan	NORA SCHELL*
Lizzie Borden	SYDNEY SHEPHERD*

Set Design	BRIAN PRATHER
Costume Design	SAAWAN TIWARI
Lighting Design	ROB DENTON
Sound Design	MEGAN CULLEY
Projection Design	CAMILLA TASSI
Hair & Make-up Design	ASHLEY RAE CALLAHAN
Dialect Coach	JOHANNA MORRISON
Casting Director	HARDT CASTING, LLC
Stage Manager	TOM KOSIS*

music director **ERIKA R. GAMEZ**
directed by **LAINIE SAKAKURA**

Conductor/Keyboard 1	ERIKA R. GAMEZ
Guitar 1	BILLY BIVONA
Guitar 2/Keyboard 2	JEFF CARLSON
Bass	CHRISTIE ECHOLS
Cello	ESTHER BENJAMIN
Drums	MOLLY PLAISTED

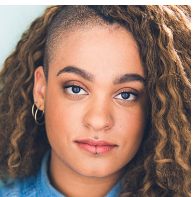
WHO



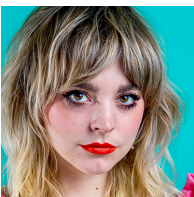
COURTNEY BASSETT (Emma Borden | she/her) is happy to be making her TWH debut! Credits include Broadway: *The Great Comet*. TV: *Manifest*, *Good Morning America*, *The Today Show*, *The 71st Annual Tony Awards*. Film: *Bros*. Courtney just finished a year-long run in the original cast of the Lucille Lortel Award winning *Titanique*. Other regional/Off BWay favorites: *Thelma Louise Dyke Remix* (NAMT), *Bedbugs!!*, *POP! (Who Shot Andy Warhol?)*, "Somewhere" vocalist for NYC Ballet's West Side Story Suite. Singer/Songwriter for indie pop band **Starbird & the Phoenix**. Courtney plays Starbuck in and is on the book writing team for the upcoming *Kill the Whale: A Moby Dick Rock Opera*. Next up: The world premiere of new musical *Teeth*, at Playwrights Horizons in NYC. Thank you to the fierce Lizzie team, TWHartford, and DGRW.



KIM ONAH (Alice Russell | she/her) is thrilled to be making her TWH debut! A graduate from Harvard University, Kim is an NYC-based actor, singer, and writer. Favorite credits include: *& Juliet* (Broadway); *Beautiful* (Tour Company); *Aida* (as Aida); *Guys and Dolls* (as Sarah Brown); *All Shook Up* (as Lorraine). So much love and thanks to her family, friends, and agents at The Collective. kimonah.com @kimona93



NORA SCHELL (Bridget Sullivan | they/them) is making their TWH debut. Nora graduated from The University of Michigan with a BFA in Musical Theatre and a minor in Gender, Race and Nation. They received Drama Desk, Drama League and Clive Barnes Award nominations for their performance and Off-Broadway debut in *Spamilton*. Nora made their Broadway debut in *Jagged Little Pill*. With their educational background, Nora continues to cultivate a career focused on the intersection of performing and social justice. Love and gratitude to Gregg Baker Management, their family and Jane.

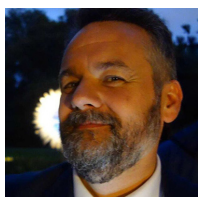


SYDNEY SHEPHERD (Lizzie Borden | she/her) is elated to be making her TWH debut. Selected stage credits includes Broadway: *First Date*, Regional: *August Rush* (Lyla), *Jasper in Deadland* (Agnes). Selected TV/Film: *Red Dead Redemption II*, Netflix's *Ask the Storybots*, and the upcoming feature *The Midnight Song*, a film for which she also wrote the title track. Sydney is $\frac{1}{3}$ of the critically acclaimed indie folk-pop band **Bandits on The Run**. They've released several albums, toured internationally, and played festivals like The NPR Tiny Desk Tour, Cambridge Folk Fest, and Singapore Formula 1 Grand Prix. Sydney is also a longtime collaborator of actor/musician Christopher Sears, and originated the role of The Moon in Sears' *Moonchildren the Opera*. Sydney is currently working with collaborators Adrian Enscoe, Regina Strayhorn, Christopher Sears, and Peter Hedges on a new stage musical. @sydneytorin @banditsontherun



STEVEN CHESLIK-DEMEYER (Music and Lyrics) Fresh out of art school in the early 80s, Steven bought a used guitar in a junk shop on St. Marks Place, learned three chords, and taught himself to write songs by listening to Dolly Parton records. He insinuated himself into the post-punk neo-folk scene in the East Village, but soon discovered the world of downtown theater. Through the late 80s and early 90s, he wrote and performed music

in several experimental productions with Tiny Mythic Theatre Company and directors Kristin Marting and Tim Maner. In 1992, he and Jay Byrd created an act called *Y'all*, singing original songs and telling stories in the style of old-time country vaudeville. The act sprang from the downtown theater scene but went on to play in coffeehouses, churches, retirement homes, and rock clubs across the U.S., Canada, and Europe. In ten years, *Y'all* recorded four CDs, published two books, appeared on MTV and Comedy Central, and went broke. Their last two years together, they lived in a camper on the road with a third partner. Steven made a documentary about that relationship and the final years of *Y'all*, *Life in a Box*, which premiered in the San Francisco International Film Festival in 2005. After the demise of *Y'all*, Steven returned to New York where he continues to make music and theater and musical theater. He is a 2019 Jonathan Larson Grant finalist, a MacDowell Fellow, and a graduate of the University of Texas at Austin with a degree in American Studies. stevencheslikdemeyer.com.



TIM MANER (Book, Music and Lyrics) Right out of college, Tim co-founded the tiny mythic theatre company with a focus on developing the work of creator/directors and a mission to “disrupt the american living room/rearrange the furniture in the american mind.” tiny mythic’s work became a staple of the downtown alt-theatre scene of the

early 90s, and just a few years later, the previously transient company transformed into the award-winning NYC arts center, HERE, called “One of the most unusual arts spaces in New York – and possibly the model for the cutting edge arts space of tomorrow” by The New York Times. His producing/presenting history at HERE included hundreds of productions brought to life by thousands of artists. He remains an active founding board member working to expand opportunities for mid-career artists. Tim has created over twenty original works as a creator/director including: *The Hawthorne Project*, a six-year collaboration with writer/adaptor Elizabeth Banks building a trilogy of multi-layered multi-media events adapted from Nathaniel Hawthorne’s three American novels and *The Opera Project*, a five-year collaboration with writer Ruth Margraff and composers Matthew Pierce and Fred Ho creating a series of original new wave operas. Outside of the work he created with his own companies he has directed at The New York Shakespeare Festival and New Dramatists Guild, was a guest artist/teaching fellow at Harvard University, and has taught at New York University/Playwrights Horizons. He’s also sung in some bands, arranged and conducted a Cowgirl Chorus, and originated roles in two Robert Wilson shows: *Hamletmachine* (NY/European Tour) and *Salomé* (La Scala, Milan). He is a graduate of NYU/ Tisch School of the Arts.



ALAN STEVENS HEWITT (Music and Lyrics) grew up in a musical family, the son of a Philadelphia Orchestra oboist. He cut his teeth as a teenager recording for Ruffhouse/Columbia Records at Studio 4 in Philly, and during the '90s as member of alt-folk band *The Low Road* (Caroline Records), touring with *Los Lobos*, *Barenaked Ladies*, and label-mates *Ben*

Folds Five. He moved full-time to New York City in the late '90s to pursue his conservatory degree in Composition at Mannes College of Music/The New School, where he studied with Robert Cuckson and Carl Schachter. In the mid-aughts, with partners, he opened The Coral Room, a nightclub in the Chelsea section of Manhattan, which featured a 10,000 gallon saltwater aquarium with live “mermaid” performances and hosted cutting edge bands, performance artists, events, and DJs nightly. As an actively performing musician, his credits include Broadway’s *Frozen*, *Come From Away*, *The Band’s Visit*, *Fun Home* (also 1st Natl. Tour), *Finding Neverland*,

WHO

Matilda, Sting's *The Last Ship*, *Rocky, Jekyll & Hyde*, *Lysistrata Jones*, Green Day's *American Idiot*, *Spring Awakening* (also 1st Natl. Tour), Off-Bway's *Closer Than Ever*, *RENT*, tours in the U.S. and abroad, and numerous recordings as a player, composer, arranger, and producer. His first score for theatre was for a production of Bertolt Brecht's *Baal* that The New York Times thought was awful. He lives in the Lower Hudson Valley and enjoys motorcycles and longboarding.



LAINIE SAKAKURA (Director) is a NYC based freelance director and award winning choreographer. Recipient: 2015 Joe A. Callaway Award Outstanding Choreography and 2002 Joseph Jefferson Award Best Choreography. Broadway: *FOSSE, Dance Reconstructions* (1999 Tony Award Best Musical) and Broadway veteran performer of 6 original casts.

Lainie has directed work in NYC at Cherry Lane, Peter Jay Sharp Theatre, Joyce Theater, Bruno Walter Auditorium, Neighborhood Playhouse, Theatre 71, Summer Stage, and solo shows for the late, great Alvin Ing. NYU Tisch NSB adjunct professor and guest teacher/artist/director in a dozen universities. Long time advocate for diversity and inclusion in the performing arts. Passion projects include: *My AAPI Broadway Story: Breaking Barriers*, Lincoln Center Library for the Performing Arts (Concept/Direction); *Corner of Bitter and Sweet*, adaptation of the NYT Bestseller *Hotel on the Corner of Bitter and Sweet* (Book/Direction); BCEFA Red Bucket Follies 2018 with 42 AAPI Broadway performers (Co-Conceived/Writer). Rockettes of Color Alumnae (Co-founder/Co-chair). Theatre Producers of Color (2023 Cohort). Always for my daughters, Avelina and Isabela.



ERIKA R. GAMEZ (Music Director/Keyboard 1) is a NYC-based conductor and keyboardist. Off-Broadway: *The Harder They Come* (The Public). National Tour: *Summer: The Donna Summer Musical*. Regional/Selected: *Next To Normal* (Greenbrier Valley Theater); *Aida* (STAGES St. Louis); *A Christmas Carol* (McCarter Theatre); *On Your Feet!*

(John W. Engeman Theater); *Little Duende* (NAMT); *Miss You Like Hell* (Patio Playhouse); *Allegory* (La Jolla Playhouse WOW Festival). MM in Conducting, San Diego State University; BA in Music Education, Fresno State. Proud Local 802 AFM member. Many thanks to our incredible cast, crew, and band. All my love to my family, friends, and Andrew dearest. Cheers! erikargamez.com



BRIAN PRATHER (Set Design) is always excited to design for one of his adopted artistic homes. His most recent TheaterWorks Hartford designs include: *Secondo*, *The Who and The What*, *American Son*, *Fully Committed*, *Girlfriend*, *The River*, and *Relativity*, among many others. Recent Off-Broadway designs include: *Mrs. Warren's Profession* (GTG), *Daniel's Husband* (Primary Stages), *Widower's Houses* (TACT/Gingold), *A Christmas Carol* (St. Clement's), *Becoming Dr. Ruth* (Westside), *Freud's Last Session* (New World Stages), and *The Burnt Part Boys* (Playwrights Horizons). International: Chung-mu Art Hall (South Korea). Regional: Asolo Rep, Goodspeed Musicals, Cincinnati Playhouse, Alley Theatre, Barrington Stage Co., Shakespeare Theatre of New Jersey, Capitol Rep., among many others. Jeff Award winner (Chicago), Emmy nomination (New England) for *The Kate* on Public Television, two-time Berkshire Theatre Critics Assoc. Award winner, Associate Artist at Barrington Stage Co., Asst. Professor of Theatre at Central CT State University and member of USA Local 829. See Brian's work at brianprather.com.



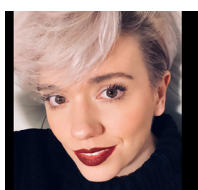
SAAWAN TIWARI (Costume Design | they/them) is a proud graduate of the University of Michigan. Beyond designing, they teach through Roundabout Theatre Company. Credits: Off-Broadway: *The Gospel According to Heather* (Theatre 555). Additional credits: *Hip Hop Cinderella* (New Victory Theatre), *Footloose* (American Stage), *Bruise and Thorn* (Pipeline Theatre Company), *Far From Canterbury* (Barnstormers Theatre). Saawan is a proud member of the LGBTQ+ and AAPI communities. saawandesigns.com



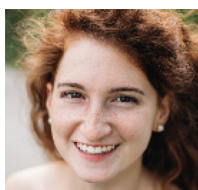
ROB DENTON (Lighting Design) is thrilled to be returning to TheaterWorks Hartford where he last designed *Fun Home*. Rob's recent designs include *Dracula: A Comedy of Terrors* (Off-Broadway); *Chess and Little Shop of Horrors* (The Muny); *The Wizard of Oz* (Capital Repertory Theatre); *Buddy: The Buddy Holly Story* (Cincinnati Playhouse in the Park); *The Marvelous Wonderettes* (Alabama Shakespeare Festival); *Jersey Boys* and *A Funny Thing Happened on the Way to the Forum* (Maltz Jupiter Theatre). Rob's upcoming designs include: *The Jerusalem Syndrome* (Off-Broadway). IG @rdentdesign



MEGAN "DEETS" CULLEY (Sound Design) Selected Design: *Antigone* (Cleveland Play House); *The Loophole* (The Public Theater); *Holmes & Watson Apt. 2B* (KCRep); *Grounded, Hurricane Diane, Stew* (Dobama Theater); *Terminus* (New York Theatre Workshop); *Stranger Sings!* (Off-Broadway); *25th Annual Putnam County Spelling Bee* (ACT of CT); *Inanimate* (The Flea Theater); *The Last Match* (B Street Theatre); *Roan @ the Gates* (Luna Stage); *The Color Purple* (Theatre Horizon). Broadway Associate Design: *A Christmas Carol* with Jefferson Mays; *Jaja's African Hair Braiding*; *Flying Over Sunset*. Other Selected Associate Design: *The Secret Garden* with Sierra Boggess (Center Theatre Group); *King James* (MTC); *Come Fall In Love* (The Old Globe); *Kiss My Aztec* (Hartford Stage); *The Old Man and the Old Moon* (KCRep).



ASHLEY RAE CALLAHAN (Hair and Make-up Design | she/her) is an Emmy Nominated Hairstylist. Her design work includes *Annie* (National Tour); *West Side Story*, *Sweeney Todd*, *Disney's Beauty and the Beast* (Muny); *Evita* (ART, STC & NYCity Center); *Dracula: A Comedy of Terrors* (NWS & Maltz Jupiter) and *Once Upon a One More Time* (STC). Broadway & Television Associate/Assistant Designer Credits include: *New York New York*, *Beetlejuice*, *Ain't Too Proud*, *NBC's Jesus Christ Superstar Live!*, *Summer*, *Six Degrees of Separation*, *The Color Purple Revival*, *Summer: The Donna Summer Musical*, *Holiday Inn*, *Beautiful: The Carole King Musical* and *Allegiance*. Television/Movies Hairstyling: *The Crowded Room*, *Stranger Things*, *Marvelous Mrs. Maisel*, *Ghosted*, *Oppenheimer*, *Eileen*, *Law and Order: SVU* and *The Gilded Age*



CAMILLA TASSI (Projection Design) is a projection/video designer, producer, and musician from Florence, Italy. She's excited to be back at TheaterWorks Hartford, where she designed *Fun Home*. Design credits include *King Arthur* (Lincoln Center), *Falling Out of Time* (Carnegie Hall), *Fires in the Mirror* (Baltimore Center Stage & Long Wharf Theater),

WHO

L'Orfeo (Apollo's Fire), *Boheme* (Music Academy of the West), *Malhaar: A Requiem For Water* (LA Master Chorale, Disney Concert Hall), *Magic Flute* (Berlin Opera Academy), *Secret Garden* (ACT of CT), *Side by Side* (Rep Theatre of St. Louis), and *Alcina* (Yale Opera). Tassi holds degrees in computer science, music, and projection design. MFA in Design at Yale. **Burry Fredrik Design Award** recipient, Robert L. Tobin Opera Design winner. camillatassi.com IG: [camtassi](https://www.instagram.com/camtassi)

JULIAN KELLEY (Assistant Projection Designer) is a projection designer, motion graphics artist, and 3D animator who recently graduated with his MFA in Video & Media Design at Carnegie Mellon University's School of Drama. Selected projection design credits include *Fort Dicks: The Musical* (American Theatre of Actors, NYC), *Hide and Seek* (Feinstein's/54 Below, NYC), *Cinderella and The Little Mermaid* (Sierra Repertory Theatre, Sonora CA) *Caged* (Passage Theatre, Trenton NJ), and *Fun Home* (4th Wall Theatre, Montclair NJ). IG [@juliankelleydesign](https://www.instagram.com/juliankelleydesign)



PAUL HARDT (Casting Director | he/him)
Broadway: *West Side Story*, *Come Fly Away*, *August: Osage County*, *A Moon For The Misbegotten*, *On Golden Pond*, *Hot Feet*, *Caine Mutiny Court Martial*, *Once Upon A One More Time*. National Tours: *West Side Story* (US and World tour), *A Bronx Tale*, *Dirty Dancing*, *Legends!*, *Whistle Down the Wind*, *On Golden Pond*, *August: Osage County*, *The Bodyguard*, and the current tours of *Cats* and *Annie*. Regional Theatres include: Goodspeed Opera House, Bucks County Playhouse, Delaware Theatre Company, TUTS, Pasadena Playhouse and Asolo Rep.



ROB RUGGIERO (Producing Artistic Director) has been a part of TheaterWorks Hartford artistic leadership for 30 seasons. He has directed over 70 shows, including TWH productions of *Fun Home*, *The Sound Inside*, *American Son*, *The Legend of Georgia McBride*, *Constellations*, *Next to Normal*, *Relativity* (starring Richard Dreyfuss) and *Christmas on the Rocks*, which he also conceived. His Broadway credits include *Looped* (starring Valerie Harper in a Tony-nominated performance) and *High* (starring Kathleen Turner) which had its world premiere at TWH. He also conceived and directed the musical revue *Make Me a Song: The Music of William Finn* which moved off-Broadway and was nominated for Drama Desk and Outer Critics Circle Awards. Rob conceived and directed *Ella*, a musical about Ella Fitzgerald, which saw sold-out runs in 24 regional theaters and was produced as a National Tour. His work on plays and musicals has received multiple awards in Connecticut and around the United States. Rob regularly directs at Goodspeed Musicals where over his 16-year relationship he has directed many award-winning musical productions. Internationally he directed *Fiddler on the Roof* in Athens, Greece.

MIKE LENAGHAN (Director of Production) This season is Mike's 12th with TheaterWorks Hartford. Mike's professional career began at Goodspeed Musicals, followed by Juilliard School's Production Department, and Westport Playhouse. Broadway credits include *Thoroughly Modern Millie*, *Our Town* and *Fortune's Fool*. Off Broadway: *The It Girl*, *Suburb* and *The Summer of '42*.

TOM KOSIS (Production Stage Manager) recently stage managed TheaterWorks Hartford productions of *Clyde's*, *The Rembrandt*, *Secondo* and *Christmas on the Rocks*. Tom's Broadway credits include *Mary Poppins*, *Side Show*, *The Scarlet Pimpernel*, *Flower Drum Song*,

Bye Bye Birdie, A Chorus Line, My Fair Lady, Grand Hotel and Nice Work If You Can Get It. His National and International Tour credits include Irving Berlin's *White Christmas, A Chorus Line, Song & Dance, West Side Story* and *Dreamgirls*. From 2015 to Spring 2023, Tom was the AEA Production Stage Manager for UConn's Connecticut Repertory Theatre where he also supervised their stage management students. tomkosis.com

ACTORS' EQUITY ASSOCIATION ("Equity"), founded in 1913, is the U.S. labor union that represents more than 51,000 professional Actors and Stage Managers. Equity fosters the art of live theatre as an essential component of society and advances the careers of its members by negotiating wages, improving working conditions and providing a wide range of benefits, including health and pension plans. Actors' Equity is a member of the AFL-CIO and is affiliated with FIA, an international organization of performing arts unions. #EquityWorks



AN OASIS OF CLASSICAL AND CLASSIC MUSIC

WMNR.ORG

88.1FM 91.5FM 90.1FM

PROUD TO SUPPORT
THEATERWORKS

Falcetti Music

1755 BOSTON ROAD SPRINGFIELD, MA

RENTALS · SALES · SERVICE
SINCE 1957

falcettimusic.com

Find your sound

THANKS

THANKS FOR MAKING THINGS HAPPEN



Hartford
Foundation
FOR PUBLIC GIVING



BANK OF AMERICA



GREATER HARTFORD
ARTS COUNCIL



NASSAU

TRAVELERS

The Edward C. & Ann T.
Roberts
FOUNDATION

Lincoln
Financial Foundation



Raytheon
Technologies

cthumanities



Bank

America's Most Convenient Bank®

Connecticut
still revolutionary

THE SHUBERT
FOUNDATION INC.

Richard P. Garmany Fund at the Hartford Foundation for Public Giving

The Burry Fredrik Foundation

Cheryl Chase and Stuart Bear Family Foundation

Ensworth Charitable Foundation, Bank of America, N.A., Trustee

John and Kelly Hartman Foundation

The George A. & Grace L. Long Foundation, Bank of America, Co-Trustee

William and Alice Mortensen Foundation

The Elizabeth M. Landon and Harriette M. Landon Charitable Trust

The Katherine K. McLane and Henry R. McLane Charitable Trust

Liberty Bank

M&T Bank

The
Goodwin
Hartford's boutique hotel

The Goodwin is the official hotel of TheaterWorks Hartford.

SEASON PARTNERS

TYLER ANDERSON / TERRENO & BAR PIÑA

SALUTE

LAZ

DUNKIN' PARK

MEZZIE'S ICE CREAM

MORE THANKS

Morgan Brown, Lucas Clopton, Goodspeed Musicals Costume Collection and Rentals, Hartford Stage Costume Collection and Rentals, Dan Hartington, Melanie Guerin, Show Lighting Corporation, Headlines Hair Salon

COVID SAFETY TEAM: Cecelia Chapman, Joshua Demers, Bill Farquhar

TWH STAFF

Producing Artistic Director
Rob Ruggiero

Producing Associate
Kate J. Cudworth

Director of Production
Mike Lenaghan

Company Manager/
Costume Supervisor
Cecelia Chapman

Audio-Visual Supervisor
Adam Bintz

House Electrician
Sasha Wahl

Master Carpenter
David Weaver

Assistant Stage Manager/
Wardrobe
Jennifer Kiefer

Props/Scenic Charge
Erin Sagnelli

AOCA Fellow/Social Media
Joël Cintron

Janitorial
Chris Williams

IT Consultant
Dean Batchelder

Director of Development
Dina Silva

Development and Community
Engagement Associate
Erica Tracy Sullivan

General Manager
Nicole LaFlair Nieves

Business Associate
Yaasmeen Cook

Facilities Manager
Bill Farquhar

Director of Audience
Administration
Joshua Demers

House Manager
Sam Boushé

Audience Services
Mailina Betsey-Chambers
Diana Sparks
Jill Atkinson

Director of Marketing/
Communications
Freddie McInerney

Marketing Associate
David Samuel

Bartender
Alex Rocha

LIZZIE'S CREW

Assistant Projection Designer
Julian Kelley

Audio Engineer
Julia McIntyre

Seamstress
Peg Carbonneau

Electricians
Cazimir Bzdyra
Stef Carr
Megan O'Brien
Zach Pilat

Wardrobe Crew
Vic Basilio

Set Crew
Dara Willmarth

Carpenters
Jayne Carlman
Joseph Depalmer
Nate Hamilton

Scenic Artist
Amelia Pizzoferrato

BOARD

Dina Plapler (President)
Kristen Phillips (Vice President)
Larry Samplatsky (Treasurer)
Grace Figueredo (Secretary)
Jennifer DiBella (Asst Secretary)
Michael G. Albano
Stacy Brusa
Fernando Ferro
Christopher R. Hayes

Gordon Hui
Stephanie A. Johnson
Lee G. Kuckro
Supriya S. Laknidhi
Françoise A. Miller
Felix Okwaning
Robert Pulito
Marcia Smith
Christopher White

TERRENO BAR PIÑA

GOOD TIMES ARE RIGHT AROUND THE CORNER

DINNER BEFORE THE SHOW /
DRINKS AFTER THE SHOW



SERVING IN BAR PIÑA AND TERRENO

LOCATED ONE BLOCK FROM THE THEATER IN THE
GOODWIN HOTEL

1 HAYNES ST. 860.904.2101

PINAHARTFORD.COM

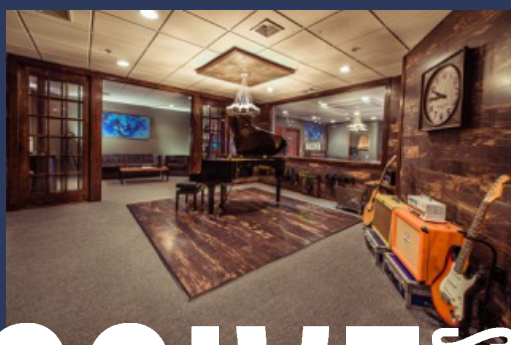
award-winning

innovative

sound design

composition

production



MASSIVE PRODUCTIONS

Matt Berky's work has been acknowledged by the **Silver Microphone Awards**, the prestigious **Telly Awards** for music scoring and the **Communicator Awards** for radio production technique. His music can be heard around the world on radio and television, medical animations, corporate videos, films and documentaries.

Massive Productions • 2360 Main Street • Rocky Hill
860.721.7444 • matt@massiveproductions.com
Matt Berky — Owner / Engineer / Composer

PLATINUM PARTNERS

Gifts of \$25,000+

Cheryl Chase and Stuart Bear Family Foundation
David Holmgren
The Hoffman Family
The Richard P. Garmany Fund at HFIG
LAZ Parking
Marjorie E. Morrissey
The Estate of June M. Rosenblatt
Dennis Russo and WondriskaRusso
Ruth G. Timme Family Foundation
Theresa Waltz

GOLD PARTNERS

Gifts of \$10,000+

Common Sense Fund
ETCH
Robert and Francine Goldfarb
Suzanne M. Hopgood
Ted and Adlyn Loewenthal
Thomas W. and Emily B. Nissley
Jonathan and Sherry Schreiber

SILVER PARTNERS

Gifts of \$5,000+

Anonymous
Matthew and Patricia Berky
Grace Figueredo and Ken Gostyla
Ted and Kathy Fleming
Helen and Henry Frye
Floyd W. Green, III
William Knight and Jill Adams
The Elizabeth M. Landon and Harriette M. Landon Charitable Foundation
Joy McConnell
The Katharine K. McLane and Henry R. McLane Charitable Trust
Francoise and Hans Miller
Kristen M. Phillips and Matthew Schreck
Dina Plapler and Earl McMahon
Dr. Anne Rothstein and Jane Hellman
Larry Samplatsky and John Tackus
Elizabeth Schiro and Stephen Bayer
Kevin and Marcia Smith
Elizabeth Vandeventer
The Zachs Family Foundation
Joseph Zimmel

BRONZE PARTNERS

Gifts of \$2,500+

Doug and Sheryl Adkins
Anonymous
Staci Bachman
Ivan A. Backer* and Paula Fisher
Andrew Benator

ANNUAL FUND DONORS

BRONZE PARTNERS (continued)

Gifts of \$2,500+

Jacqueline Berkowitz
James Bruno and William Gratz
Stacy Brusa
Amy Charney and Lewis K. Wise
The Gawlicki Family Foundation
Peter Grzybala and Diane Korntheuer
Lee G. Kuckro
Marcia Lattimore
Jia Luo and Michael Monts
Kenneth and Cynthia Malm
Marks Family Foundation
Jill and Martin Mass
Eric D. Ort and Duff Ashmead
Joan and Barry Richter
James M. Salemi and Kenneth J. Bartschi

LEADING DONORS

Gifts of \$1,000+

Michael G. Albano and Nancy B. Alisberg	Donna M. and John Kidwell
Liz Armstrong	Dr. and Mrs. Bernard Kosto
Ann Azevedo and Donato T. DiGenova	Wally and Chris Lamb
Thomas O. and Melanie A. Barnes	Christopher Larsen
Peter and Lisa Block	Judy Lewis
George Bouthet	Steve and Sheila Litchfield
Claire Burns	Kathleen Lovell
Karen K. Byrne	Barri R. Marks and Woody Exley
Ann M. Catino	Leta W. Marks
Alison and Tony Caxide	Susan Monks
Jonathan Clark	Richard E. and Paula Musgrave
Tammy Conley and Roselinde Torres	Barbie Nadal-Cristofaro and Victor Cristofaro
Richard A. and Aida Cyphers	Beverly O'Halloran
Catherine Daly and Roy Dion	Bill and Joy O'Sullivan
Jack and Alice Ellovich	Richard Orr and Cynthia Courtney
Diane Ellsworth	Gerald Pastor and Jane Porterfield
Fernando Ferro and Jane Owen	Robert and Margaret Patricelli
Muriel and Karl Fleischmann	Susan Pollard
William Fuller	Roberta W. Prescott* and Robert O. Hurwitz*
Peter and Melissa Gambardella	Bob and Patti Pulito
Tom and Cynthia Garten	Joan and Allan B. Reiskin
Ken and Jennifer Geisler	Linda L. and Stephen E. Revis
Catherine Godin	Annemarie H. Riemer
William T. Gough and Jane Cook	Joel and Susan Rottner
Hartford Lumber Company	Rob Ruggiero
Brian E. Harvey and Sherry A. Manetta	Mary Beth Russell
Christopher Hayes	Pedro Segarra and Charlie Ortiz
Angeline and David Hein	The Carol Sirot Foundation
Susan Holmes and Bessy Reyna	Helen and Nelson Sly
Gordon and Kelly Hui	Jeff Snyder
Douglas and Tita Hyland	Karen Lee Snyder
Sharon and David Jepson	Sally Speer
Stephanie Johnson	

LEADING DONORS

Gifts of \$1,000+

Robert Stillman and Leslie Fass	Jeff Rudikoff and Edee Tenser
Donna M. and Sam Stout	Christopher White and Patrick Langevin
Robert H. Tabshey	Mara A. Whitman and Marc Edrich
Allan B. and Sally S. Taylor	Dale Paul Woodiel, Jr.

LOYAL SUPPORTERS

Gifts of \$250+

Accounting Resources, Inc.	Susan and Ned P. Dunn
Acorn-Alcinda Foundation	Ms. Mary-Jane Eisen and Robert K. Yass
Victoria F. and Leonard Albert	Carolyn Emerson
P. K. and Phoebe R. Allen	David W. and Cheryl Epstein
Gregory and Mona Anderson	William and Joan Farquhar
Anonymous (2)	David and Peggy Fay
Kathleen and Thomas Archambault	The Fechtor Family Foundation
Joyce and Richard Armstrong	Richard and Georgia Feigel
John R. and Angela Arrington	Stanley and Susan P. Fellman
Stephen and Judy August	Jocelyn and Dan Fenyn
Edwin L. and Edith G. Baum	Christine Fisch
Paul and Joanne Bourdeau	Michael and Evelyn Fishman
Julianne and Norman Boyd	Elinor R. and Herbert Flink
Whitney Boynton and Kevin Galvin	Mary-Jane Foster
John Brancato	Catherine Franks
Joanne and Peter Brandien	Timothy A. and Roxane M. Fromson
Joel Brehm and Rodney Dugas	Rachel Galligan
Julie A. Brogan and Christopher A. Uhrich	Carol and Peter Ganick
Mayor Luke and Sara Bronin	Robert Garrey
Ellen M. Brown	Alice and Gary Gold
Boguslawa Buczek	Megan and Jay Goldstein
Avery and Eileen Buell	Robert and Lee Goode
Alison Burns	Thomas Goodrum and Evelyn Benoit
Mary and Ritchard Cable	Pamela and Barry Gordon
John Cariani	Daniel G. Green and Walter Langner
Ann Clark and David Ehler	David and Rachel Griffin
Linda F. Cohen	Pierre and MaryEllen Guertin
Steven and Elaine Cohen	Laura Harris
Dennis Cole	Frank Haviland and Shirley Mae Neu
James P. Condren and Ellen J. Robinson	Felice Heller and Michael Steinberg
Audrey Conrad	Ronald V. and Patricia Hensley
Susan B. Coogan	Hillary Huttenhower
Cynthia Coppage	Warren Hollister
Paula K. Corrao	Christine Hunihan
Catherine Costa	Polly Huntington
Keith R. Cudworth	Bradley and Lisa Hurley
James and Sheryll-Ann Covill	Brad M. and Jill J. Hutensky
Evan Cowles and Brie Quinby	Robert and Karen Isaacs
Jennifer and Marc A. DiBella	James J. Keller and Candice M. Chirgotis
Deirdre and Tom Dillow	David Kelly and Keyne B. Reid
Michele and John L. Dolan	Jennifer and James Kimenker
Hollis Dorman	Myra R. and William Kleinman
Lise Doutré	Wendy Kwalwasser
Beverly and Chris Doyle	Katherine J. Lambert
Melissa J. Taylor-Doyle and Chris Doyle	Susannah Landis


LOYAL SUPPORTERS

Gifts of \$250+

Ann and Bill Lazarek
 William and Deanna Leikin
 John W. and Joyce R. Lemega
 Doreen Linton
 Barbara and Bing Liu
 Ted and Adlyn Loewenthal
 Dr. Christopher K. Manning and Chuck Riott
 Guy and Sharon Marhewka
 Eileen M. Marks and Ed Mikolowsky
 Judy and Merrill Marks
 Jeffrey Amell and Mary S. Martin
 Erin McGurk
 Peggy and Alan Mendelson
 Brian Molinari and Kristan Pierz
 Danielle K. and Jim Naylor
 Gail Nelson-Holgate
 Leigh Newman and Gary Starr
 Kathy and Walter Nicksa
 Don Noel
 Emily Noel
 Rod O'Connor
 Felix Okwaning
 Joseph Pace
 Alan and Jennifer Panecasio
 Alan and Michele Parker
 Richard and Robin Pearson
 MaryJane Perrier
 Randi and Steve Piaker
 Leslie Pilder
 Raphael Podolsky and Jill Mehler
 Leslie Pollack
 Frances Porter
 Laura Post and Mark Pazniokas
 Sandra and George Pruce
 Marion and Seth Radeen
 Naomi H. Rafalowicz
 Jo-Anne Rankin and John Williams
 Patricia and Edgar Reed
 Margaret and Charles Rich
 Christina and Ezra Ripple
 Frank Rizzo
 Jo Ann Roberts
 Nancy and Stephen Roberts
 Barbara Rubin
 Sandra H. and Marshall Rulnick
 William Goba and Joan Russoniello-Goba
 Kenneth and Julie B. Saffir
 Jennifer and Christian Sager
 Linda M. Samoncik
 Martha Sandefer and Frederick Sweitzer
 Phyllis Satter
 William Schaberg
 Roberta P. and Philip A. Schmidt
 Malcolm and Sally Schneider
 Leon H. and Brenda Seitelman
 Gale and Larry Shapiro
 Claire E. Shea
 Phyllis and Austin Sheridan
 Dana and Chuck Shimkus
 Joseph Shortall and Sara Bernstein
 Shortell Framing
 Barbara Sicherman
 Penny and Steve Sigal
 Dina Silva
 Richard and Raimi Slater
 Gilbert and Ruth L. Small
 Leslie Smith and Philip Wellman
 Sharon Smith
 Shirley Smith
 Tyler Smith and Lyn Walker
 Ruth and Howard Sovronsky
 Catherine J. Spera
 Felix J. and Helene L. Springer
 Beatrise Srams
 Glenn Stanisewski
 Larry Starr
 Barbara and Leon Stechenberg
 Stacey Stone
 James G. and Marcia E. Sutton
 Thomas and Donna Swarr
 Ellen D. and John B. Thomas
 Roberto Tollis and Peter Chester
 Ruth Treat
 Maria Tsitsirides
 Hope W. Vath
 Arthur Edward Webster
 Gretchen H. Wiedie
 Karen and Philip Will
 Lawrence and Deena Williams
 Arnold and Myrna Wyse
 Elliot Zweig and Doreen Fundiller-Zweig

THE ROB RUGGIERO INNOVATION FUND

Michael G. Albano and Nancy B. Alisberg
P. K. and Phoebe R. Allen
R. Kingsbury and Barbara Chase
Mr. Peter Arakas and Ms. Karen Kellerman
Virginia Argenio
James E. and Karen Bachman
Ivan A. Backer and Paula Fisher
Lynn Beaulieu and Gerry Lupacchino
Martha and Bob Belliveau
John and Laura Berman
Vanita Bhalla
John W. Bialobrzeski and Janet Rooney
Geraldine L. and Vern A. Biederman
Anne and Bruce Bowman
Patti Broad
Chester and Glenna Brodnicki
James Bruno and William Gratz
Ken Byer and Anthony Michalak
Patricia Carrigan
Polly Champ
Ted Chapin
Martin and Lorry Clayman
Patrick and Elena Coffey
Catherine Conlin
Susan B. Coogan
Evan Cowles and Brie Quinby
Keith R. Cudworth and Jane Coughlin*
Marisa Dal Ponte
Marjorie and Ronald Debold
Ms. Nancy M. Depalma
Jennifer and Marc A. DiBella
Sharon F. and George Dickerman
Marian Dziama and Karen Cormier
Susan Fay
Art Feltman and Dale James Wallington
Muriel and Karl Fleischmann
Joan Fox
Arthur Franklin
Jerry and Ida Franklin
Catherine Franks
Helen and Henry Frye
Michael Fuss
Barbara Gallo
Carol and Peter Ganick
Ken and Jennifer Geisler
Kathleen Gilrain
Robert and Francine Goldfarb
Felice Goldman
Firooz and Maria Golkar
William T. Gough and Jane Cook
Eileen Griffin
Lillian G. Harter
Ronald V. and Patricia Hensley
Warren Hollister
Beverly J. and Richard L. Hughes III
Polly Huntington
Susan Huntington
Sandra Jacobus
Valerie and Mathew Jasinski
Evan H. Johnson and Kevin Chick
James J. Keller and Candice M. Chirgotis
Judith and Richard T. Keppelman
Kitchen and Bath Design Construction
Dr. Alan and Lydia Klatsky
David and Jan Klein
Linda Koflanovich
Michele and Dane Kostin
Darwin W. and Susan Kovacs
Lee G. Kuckro
Nancy and Jerry Lahman
Supriya and Vijay Laknidhi
Annette Landry
Christopher Larsen
Marcia Lattimore
John W. and Joyce R. Lemega
Sherwood and Gwendolyn Lewis
Peggy Lorence
Betsy MacDermid
Diane Mack and Robin Gilmartin
Glen MacLeod
David T. and Judith W. Macri
Gloria Magliozzi
Lenore Mand
Judith C. and David L. McChesney
Joy McConnell
Kenton McCoy



THE ROB RUGGIERO INNOVATION FUND

Thomas and Marjorie Michalski
Donald N. and Regina M. Miller
Rachel Miller
Marjorie E. Morrissey
Richard E. and Paula Musgrave
Barbie Nadal-Cristofaro and Victor
Cristofaro

Wilbur J. and Amy Sevell Nelson

Kathy and Walter Nicksa

Jo Nol

Julia Powell O'Brien and James O'Brien

Dottie O'Meara

Nancy Pacht

Linda Parent

Marlene Passman

Saul and Joanne Pasternack

Gerald Pastor and Jane Porterfield

Carole Anne Pepe

Kristen M. Phillips and Matthew Schreck

Dina Plapler and Earl McMahon

Rochelle Pleet

Leslie Pollack

Roberta W. Prescott* and Robert O.
Hurwitz*

Susan Rathgeber

Martey S. Rhine

Margaret and Charles Rich

Margaret Rick

Judith Rifkin

Christina and Ezra Ripple

Robert Rodner

Sari and Jim Rosokoff

Marjorie Ross

Barbara Rubin

Linda Ryan

Jennifer and Christian Sager

Larry Samplatsky and John Tackus

Phyllis and Austin Sheridan

Dina Silva

Mary Silverberg and Joseph Kolczynski

The Carol Sirot Foundation

Jen and Kenneth Siskind

Gilbert and Ruth L. Small

Leslie Smith and Philip Wellman

Kevin and Marcia Smith

Larry Starr

Kate Steven

Dot and George Stone

Donna M. and Sam Stout

Mervyn Strauss

Robert H. Tabshey

Eleanor D. Tener

Ruth G. Timme Family Foundation

Mary Lee Morrison

Hope W. Vath

Theresa Waltz

Linda Webber

Judith and Joel Weisman

Peter M. and Ellen T. Zeman

*deceased



NATURAL BORN
stunners

LUX BOND & GREEN 
JEWELERS *celebrating* 125 YEARS

46 LASALLE ROAD WEST HARTFORD 860.521.3015
140 GLASTONBURY BLVD. GLASTONBURY 860.659.8510

MOHEGAN SUN WESTPORT WELLESLEY BOSTON

EVERY BOX HAS A STORY™

SHOP ONLINE AT LBGREEN.COM OR CALL US AT 800.524.7336