

new work festival '22



NEW STORIES

EXCITING WORK

**STRONG
VOICES**

JAMES ANTHONY TYLER

BROOKE BERMAN

MELISSA CRESPO

SARAH SALTWICK

TERRY GUEST

**LIVE &
VIRTUAL**

May 16 - 22

**THEATER
WORKS
HARTFORD**

NEW WORKS

FESTIVAL SCHEDULE

THE DROP OFF

by James Anthony Tyler

directed by Shariffa Ali

STREAMING 5.16 – 5.22 ANYTIME

ONLINE TALK-BACK 5.20 @ 7PM

DEARLY BELOVED

by Brooke Berman

directed by Michael Barakiva

LIVE ON STAGE READING 5.21 @ 2PM

TALKBACK LIVE ON STAGE 5.21 @ 3:45PM

NEW WORK PANEL

LIVE ON STAGE LIVE 5.21 @ 4:30PM

COCKTAILS IN THE LOBBY 5.21 @ 5:30

EGRESS

by Melissa Crespo & Sarah Saltwick

directed by Caitlin Sullivan

STREAMING 5.16 – 5.22 ANYTIME

ONLINE TALKBACK 5.21 @ 7PM

ANDY WARHOL PRESENTS: THE COCAINE PLAY

by Terry Guest

directed by Mikael Burke

STREAMING 5.16 – 5.22 ANYTIME

ONLINE TALKBACK 5.22 @ 1PM

NOTE FROM ARTISTIC DIRECTOR ROB RUGGIERO

Our New Work Festival is an exploration and celebration of exciting new voices in American Theater. With workshops, a panel discussion and talk-backs – both live and online – the Festival is the newest arm of our commitment to the development of important new plays.

To that end, we gave five exceptional playwrights space, time and support to bring each of their projects to the next stage in its developmental journey. Immerse yourself in these extraordinary stories and be a part of the wonderfully creative process that brings them to stage – it's always better when we do it together. Thanks for being here!

PRODUCING PARTNERS

JOHN AND KELLY HARTMAN
FOUNDATION

MARJORIE E. MORRISSEY

twhartford.org

#NewWorkFestival

#TheaterWorksHartford



[theaterworkshartford](https://www.facebook.com/theaterworkshartford)



[@twhartford](https://twitter.com/twhartford)



[@twhartford](https://www.instagram.com/twhartford)

FESTIVAL '22

THE PLAYS

based on schedule

THE DROP OFF

by James Anthony Tyler
directed by Shariffa Ali

Delphina Walker	CHERENE SNOW*
Allain Ture	LISAGAY HAMILTON*
Mimi Gardner	JULES LATIMER*
Crystal McClain	C NIAMBI STEELE*

DEARLY BELOVED

by Brooke Berman
directed by Michael Barakiva

Jenny	BLAIR LEWIN*
Wes	HUNTER RYAN HERDLICKA*
Jorge	DANIEL JOSÉ MOLINA*

EGRESS

by Melissa Crespo & Sarah Saltwick
directed by Caitlin Sullivan

You	SARAH ELLEN STEPHENS*
Woman	DANA BERGER*
Man	ALEX MICKIEWICZ*

ANDY WARHOL PRESENTS: THE COCAINE PLAY

by Terry Guest
directed by Mikael Burke

Marilyn Monroe	AYANNA BRIA BAKARI*
Andy Warhol	JONATHAN BURKE*
Edie Sedgwick	AFI BIJOU*
Michael Vaughn Brown	JOHN CLARENCE STEWART*

NEW WORK FESTIVAL Curator and Producer
TRACY BRIGDEN

Video Recording & Post-Production
ADAM BINTZ

Closed Captioning
HILDA MORENO BONILLA and ADAM BINTZ

Stage Manager – Virtual Productions KATE J. CUDWORTH*
Stage Manager – LIVE Production NICOLE WIEGERT*

Casting
JZ CASTING/GEOFF JOSSELSO, CSA/
KATJA ZAROLINSKI, CSA

† Member of SDC, Stage Directors and Choreographers Society.

*Member of Actors' Equity Association, Union of Professional Actors
and Stage Managers in the U.S.

WHO

THE DROP OFF



JAMES ANTHONY TYLER (Playwright) TheaterWorks Hartford: *Talkin' To This Chick Sippin' Magic Potion*. James is the recipient of the 3rd Annual Horton Foote Playwriting Award, and currently has a McKnight National Residency and Commission via The Playwrights Center and is a member of Circle X Theatre Company's Evolving Playwrights Group. His plays include *Artney Jackson* (Williamstown Theatre Festival), *Some Old Black Man* (Berkshire Playwrights Lab), and *Dolphins and Sharks* (LAByrinth Theater Company and Finborough Theatre in London). MFA Howard University and NYU. The Juilliard School graduate.



SHARIFFA ALI (Director) was born in Kenya and raised in South Africa, and is an international creative leader, director, and academic committed to advancing radical change through the power of art and activism. As a filmmaker, Shariffa's works have been featured at acclaimed film/VR festivals & institutions worldwide including Sundance Film Festival (USA); Zeitz Museum of Contemporary African Art (South Africa) and more. Past theater productions include *Eclipsed*, *Detroit '67*, *Intimate Apparel*, *We Are Proud to Present*, and an original new musical called *We Were Everywhere*.



CHEREENE SNOW (Delphina Walker) is a multi-award-winning veteran actor/singer-songwriter from Chicago, who began her career in the cult classic film, *Cooley High*. Her extensive background in theater includes Broadway's *Cat on a Hot Tin Roof* with Scarlett Johansson, *Familiar*, *For All The Women Who Thought They We're Mad*, *The Little Foxes*, and *Doubt*. Film/TV: *Jules*, *Almost Family*, *Law & Order*, *Law & Order: SVU*, and *Chappelle's Show*. Chereene has written her first one-act and full-length plays, *Hiding Inside Him* and *Monday Wednesday Friday*, respectively.



LISAGAY HAMILTON (Allain Ture) notably starred on Broadway opposite Ed Harris in Aaron Sorkin's *To Kill A Mockingbird*. Recent feature films include *Ad Astra*, *Vice* and *Beautiful Boy*. Well-known for starring in *The Practice* (ABC) and *Men of a Certain Age* (TNT), more recent TV credits include: *The First and Chance* (Hulu); *House of Cards* (Netflix). A graduate of Juilliard's drama division, LisaGay's feature credits include *Go for Sisters*, *Bestly*, *Take Shelter*, *The Soloist*, *True Crime*, *Jackie Brown*, and her critically acclaimed performance in Jonathan Demme's *Beloved*. She can currently be seen in HBO's *Winning Time* and Hulu's *The Dropout*, and will soon be seen onscreen in Netflix's *Lincoln Lawyer* (premiering May 13th), FX's upcoming series *Class of '09*, and in the recently wrapped Hulu film, *The Boogeyman*.



JULES LATIMER (Mimi Gardner) TheaterWorks Hartford: *Talkin' To This Chick Sippin' Magic Potion*. Off-Broadway: *Paris* (Atlantic Theatre); Regional: *Most Happy* (Bard Summerscape); *Angela's Mixtape* (Martha's Vineyard Playhouse); *Romeo and Juliet* (Chautauqua Theatre Company); *Transmissions in Advance of the Second Great Dying* (Rattlestick Theatre). Film/TV Credits: *Guilty Party* (Paramount+), *Rustin* (Netflix), *Cal Fire* (CBS pilot). Education: The Juilliard School. @juleslatimer

THE DROP OFF continued



C NIAMBI STEELE (Crystal McClain) is a 2020 Audelco Award-winning actor residing in New York City. Her first appearance on a New York stage was in Wallace Shawn's *Hotel Play* in 1981 at LaMama ETC. She has performed on many stages working with writers Ed Bullins, Joe Franklin, Mari Evans, Celeste Bedford Walker, Aleshea Harris, and Vy Higgenson to name just a few. She was the go-to actor for the Frank Silvera Writer's Workshop for over a decade in her adopted home in the village of Harlem. She created an award-winning community program *History In Da Key of G* in 2021.

DEARLY BELOVED



BROOKE BERMAN (Playwright|she/her) is a playwright, filmmaker and memoirist. Her plays, including *Hunting and Gathering*, *Smashing* and *A Model City*, have been produced across the US and internationally at theaters including Steppenwolf, Primary Stages, 2nd Stage and developed at The O'Neill, The National Theatre Studio in London, Williamstown Theater Festival, Naked Angels and others. She has written films for Natalie Portman, The Mark Gordon Company, Vox Films, Fugitive Films and Red Crown. Brooke wrote and directed the short film *UGGS FOR GAZA*, which premiered at the Aspen International ShortsFest where it won Audience Special Recognition. She is currently in production for her feature debut, *RAMONA AT MIDLIFE*. Brooke's memoir *No Place Like Home* is available on Audible. After writing extensively about couch-surfing and barely legal sublets, Brooke now owns a coop in Queens, where she lives with her writer husband and son.

Barnard College and The Juilliard School



MICHAEL BARAKIVA (Director|he/him) is a director and writer based in NYC. He is the Founder and Creative Director of Novel Readings (novelreadings.com), a company that uses the performance of text to produce social justice events and to help writers develop their work. His latest book, *These Precious Stones* (Macmillan FSG), a contemporary epic queer protagonist YA fantasy novel, will be published in Winter 2024. The Juilliard School, Vassar College. michaelbarakiva.com



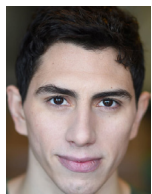
BLAIR LEWIN (Jenny) is currently playing the role of Rachel in *Zoey's Perfect Wedding* at TheaterWorks Hartford. Blair is a recent graduate of NYU Grad Acting and was last seen as Kimber in *Stick Fly* at The Repertory Theatre of St. Louis. Other credits include the Off-Broadway premiere of Nancy Bleemer's *Providence* at 59E59 Theaters and on Netflix in *The Trial of the Chicago 7*.



HUNTER RYAN HERDLICKA (Wes) is currently playing the role of Sammy in *Zoey's Perfect Wedding* at TheaterWorks Hartford. A Dallas native and Carnegie Mellon graduate, Hunter is best known for his nearly two years starring on Broadway as Henrik in the Tony Award-winning revival of Stephen Sondheim's *A Little Night Music*, opposite Catherine Zeta-Jones and Angela Lansbury, followed by Bernadette Peters and Elaine Stritch. Other New York credits

WHO

include the recent revival of *Once Upon a Mattress* (the Minstrel) starring Jackie Hoffman and Jerry Herman's *Dear World* (Julian) starring opposite Tyne Daly. Select regional credits: *The Tempest* (Ariel) at the Dallas Theater Center, *Candide* (Maximillian) at the Alliance Theatre with the Atlanta Symphony Orchestra, *Ragtime* (Younger Brother) at Barrington Stage, and others. A close friend of legendary actress Elaine Stritch, Hunter appeared in and helped produce the award-winning documentary *Elaine Stritch: Shoot Me*. Please follow @HRHerdlicka and visit HunterRyanHerdlicka.com



DANIEL JOSÉ MOLINA (Jorge) is currently playing the role of Charlie in *Zoey's Perfect Wedding* at TheaterWorks Hartford. Broadway: *Fish in the Dark* (Cort Theatre). Off-Broadway: *Terra Firma* (BPAC. Regional: APT: Petruccio in *The Taming of the Shrew*, St. Louis Shakespeare: Edgar in *King Lear* Oregon, Shakespeare Festival: Henry V in *Henry V*; Ferdinand in *Love's Labor's Lost*; Hal in *Henry IV, Part One and Two*; Ferdinand in *The Tempest*; Elliot in *Water by the Spoonful*; Posthumus in *Cymbeline*; Romeo in *Romeo and Juliet*; Three seasons at Utah Shakespeare Festival. Film: *The Yellow Birds* Recipient of 2011 National Irene Ryan Acting Award. BFA: Savannah College of Art and Design

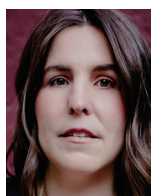
EGRESS



MELISSA CRESPO (Playwright | she/her/hers) is most known as director of new plays and musicals, and opera. Recent: *Yoga Play* by Dipika Guha (Geva Theatre Center). Upcoming: *Sheepdog* by Kevin Artigue at the Contemporary American Theatre Festival. Melissa received her M.F.A. in Directing from The New School for Drama. She is a Founding Editor of 3Views on Theater and was featured in the 2020 Broadway Women's Fund "Women to Watch on Broadway". She is the Associate Artistic Director of Syracuse Stage. melissacrespo.com



SARAH SALTWICK (Playwright) is a playwright based in Austin, TX, a graduate of the Michener Center for Writers at UT Austin and was a Jerome Fellow at the Playwrights' Center in Minneapolis. Recent productions include *The Pleasure Trials* at Amphibian Stage Productions, *Egress*, co-written with Melissa Crespo, at Amphibian and Salt Lake Acting Company. She is also a Co-Director of Holden & Arts Associates, a theatrical booking agency. She shares her home with her husband, musician and visual artist Toto Miranda, their daughter Beatrix, and their cat Lulu. sarahsaltwick.com



CAITLIN SULLIVAN (Director) is a director and theater maker based in New York City. Recent work includes *Sanctuary City* (Martyna Majok/NYTW) and *Ole White Sugar Daddy* (Obehi Janice/WP Theater). She is currently developing new pieces with The Bengsons, Sarah Einspanier, Deepali Gupta, Obehi Janice and Martyna Majok. Born and raised in Boston, Caitlin is a graduate of Williams College, an alum of the Drama League Directors Project, and a New Georges Affiliate Artist. caitlinsullivan.com

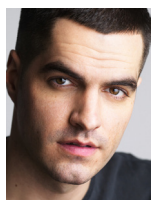


SARAH ELLEN STEPHENS (You) is thrilled to be part of TWH's New Work Festival. Selected Theater: *Dig* (Theresa Rebeck - world premiere) Dorset Theatre Festival; *Jupiter* (a play about power) (La Mama Experimental Theatre Club); *Doubt, A Parable* (Human Race Theater Company). Selected Film/TV: *21 Bridges* (Brian Kirk, starring Chadwick Boseman); *Faraway Eyes* (Harry Greenberger, starring

Andy Karl); Lee Daniels' Pimp (Christine Crokos, starring Keke Palmer); Law & Order: SVU (NBC); She's Gotta Have It (Netflix - Spike Lee); Z: The Beginning of Everything (Amazon). sarahellenstephens.com



DANA BERGER (Woman) is a New York based TV, film, and stage actress. She is best known for playing inmate Crystal Tawney on Orange Is The New Black. Other TV credits include FBI: Most Wanted and Elementary. Dana was nominated for a New York Innovative Theater Award for Outstanding Solo Performance for the one-woman show Washing Machine. The show also received a Drama Desk Nomination. She is a born and bred New Yorker, and trained at LaGuardia High School for the Performing Arts and Duke University, graduating Cum Laude with Highest Distinction in Acting. She can be seen in the upcoming feature film Brightwood. danaberger.com



ALEX MICKIEWICZ (Man) Broadway: Trouble in Mind; True West; Long Day's Journey Into Night; Therese Raquin (Roundabout). Off-Broadway: The Last Match (Roundabout); Drift (New World Stages). Regional: Death of a Salesman (Pittsburgh Public Theatre); The Last Match (Old Globe); Romeo and Juliet (Shakespeare Theatre Company); Robin Hood; The Comedy of Errors (Williamstown Theatre Festival). TV: High Maintenance; Blue Bloods; New Amsterdam

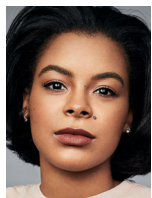
ANDY WARHOL PRESENTS: THE COCAINE PLAY



TERRY GUEST (Playwright) is a Chicago-based playwright, actor, director and teaching artist. Works include: The Magnolia Ballet (2022 National New Play Network Rolling World Premiere), A Ghost in Satin (Williamstown Theater Festival), At The Wake of a Dead Drag Queen, Marie Antionette and the Magical Negroes, The Madness of Mary Todd, and Michael Jackson and the Devil's Book. Keep up with Terry on Instagram: @terryexplainsitall

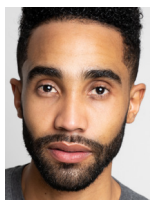


MIKAEL BURKE (Director) is a Chicago-based director, deviser, and educator. A Princess Grace Award-winner in Theatre and Jeff Award-nominated director, his recent directing credits include the world premiere of The Magnolia Ballet by Terry Guest, Fireflies by Donja R. Love, Mrs. Harrison by R. Eric Thomas, we are continuous by Harrison David Rivers, Kill Move Paradise by James Ijames, and The Agitators by Mat Smart. mklburke.com



AYANNA BRIA BAKARI (Marilyn Monroe) graduated with a BFA in acting from DePaul University. Theater credits include Relentless (Timeline/ Goodman Theatre), The Originalist (Indiana Rep), Insurrection: Holding History (Stage Left Theatre - Jeff nominated), Suddenly Last Summer (Raven Theatre), Too Heavy For Your Pocket (Timeline Theatre), How To Catch Creation (Goodman Theatre), and The Niceties (Black Theater Alliance Award Recipient) and Stick Fly (Writers Theatre). Film/TV credits include Holiday Heist, Chicago PD, Chicago Fire, Empire, 61st Street and recurring roles on The CHI and Wu-Tang: An American Saga. She is represented by Stewart Talent and is a governing ensemble member with The Story Theatre. Asante Sana!

WHO



JONATHAN BURKE (Andy Warhol) TV: "Harlem" (Amazon Prime Video); "New Amsterdam" (NBC); "Only Murders in the Building" (Hulu); Upcoming - "Bridge and Tunnel" (EPIX). Broadway: *The Inheritance* (Tony Award - Best Play); *Choir Boy*; *Tuck Everlasting*. Off-Broadway: *Toni Stone* (Roundabout Theatre Company); *Joan of Arc: Into the Fire* (Public Theater); *Langston in Harlem* (Urban Stages).

National Tours: *Cats*; *Joseph and the Amazing Technicolor Dreamcoat*; *Mary Poppins*; *A Christmas Story: The Musical*. Co-creator of @notlookingtheseries. Facebook: Jonathan Burke. Twitter: @itsjonburke. Instagram: itsjonathanburke.



AFI BIJOU (Edie Sedgwick) TV: "Godfather of Harlem" (EPIX); "Law & Order" (NBC); "The Night Of" (HBO); "Insecure" (HBO). Broadway: *Fela!*; *Holler If You Hear Me*; *Once On This Island*. Off-Broadway: *Holiday Heart* (MTC); *Taking Control* (Playwrights Horizon); *Bullet for Adolf* (NWS). Regional: *Blood Quilt* (Arena Stage); *An Octoroon* (Berkeley Rep); *Good Goods* (Yale Rep). Instagram: @afibijou



JOHN CLARENCE STEWART (Michael Vaughn Brown) will soon be seen on the Starz! crime drama series, *P-Valley* as Big Teak, created and written by Katori Hall. John starred on NBC's *Zoey's Extraordinary Playlist* as Simon. He reprised his role for a holiday-themed, feature-length film based on the Emmy-winning show, *Zoey's Extraordinary Christmas* which aired on RokuTV this past holiday season. John can also be

seen on the Netflix anthology series *What/If* opposite Renee Zellweger. Prior to that, he recurred on both seasons of the Netflix / Marvel series *Luke Cage*. His other television credits include *Hawaii Five-O*, *The Good Fight*, *Blue Bloods*, *The Mysteries of Laura*, and *Gotham*. Theater: *Choir Boy* (Off Broadway), *Fit For A Queen*, *The Whipping Man*, *Choir Boy*, *Bull Durham* (Alliance Theater), *Brownsville Song B-Side for Tray* (Actors Theater of Louisville).



ROB RUGGIERO (Producing Artistic Director) has been part of TheaterWorks Hartford artistic leadership for 29 seasons. He has directed over 65 shows, including TWH productions of *The Sound Inside*, *American Son*, *The Legend of Georgia McBride*, *Constellations*, *Next to Normal*, *Relativity* (starring Richard Dreyfuss) and *Christmas on the Rocks*, which he also conceived. His Broadway credits include

Looped (starring Valerie Harper in a Tony-nominated performance) and *High* (starring Kathleen Turner) which had its world premiere at TWH. He also conceived and directed the musical revue *Make Me a Song: The Music of William Finn* which moved off-Broadway and was nominated for Drama Desk and Outer Critics Circle Awards. Rob conceived and directed *Ella*, a musical about Ella Fitzgerald, which saw sold-out runs in 24 regional theaters and was produced as a National Tour. His work on plays and musicals has received multiple awards in Connecticut and around the United States. Rob recently directed *A Grand Night for Singing* at Goodspeed Musicals where over his 14-year relationship he has directed many award-winning musical productions. Internationally he directed *Fiddler on the Roof* in Athens, Greece.



TRACY BRIGDEN (Curator/Producer) is a writer, director and producer for the stage, screen and ear buds. With a specialty in new work, Tracy has directed award-winning theatre productions in regional theatres across the country and in New York. She was Artistic Director of City Theatre in Pittsburgh for 16 years, and prior to that she worked on the artistic staffs of Hartford Stage and Manhattan Theatre Club.

For Theaterworks, Tracy has directed *Art*, *Midsummer*, *Hand To God* and *Lifespan of a Fact*. This summer she is directing two plays in repertory under the heading #GIRLPOWER for Thrown Stone in Ridgefield, CT.

JZ CASTING (Casting) Geoff Josselson, CSA and Katja Zarolinski, CSA are New York-based casting directors, handling productions for theatre, film and television. Recent work includes productions for TheaterWorks Hartford, Arena Stage, Actors Theatre of Louisville, Baltimore Center Stage, Cape Playhouse, Denver Center, Ensemble Studio Theatre, The Irish Repertory Theatre, Merrimack Rep, Oregon Shakespeare Festival, Paper Mill Playhouse, Pittsburgh CLO, Pittsburgh Public Theatre, Repertory Theatre of St. Louis, Round House Theatre, Seattle Repertory Theatre, Weston Playhouse. jz-casting.com

NICOLE WIEGERT (Production Stage Manager) TheaterWorks Hartford: *This Bitter Earth*, *Christmas on the Rocks '21*, *Walden*. Regional: *Ah, Wilderness!*, *Pike St.*, *Detroit '67*, *Henry V*, *A Lesson from Aloes*, *A Midsummer Night's Dream* (Hartford Stage); *Passing Through* (Goodspeed Musicals); *Spinning* (Long Wharf); *Shakespeare In Love* (CT Rep); *Million Dollar Quartet*, *The Flood* (Mountain Playhouse); *Grease*, *A Chorus Line* (Ivoryton Playhouse); *Beauty and the Beast*, *Beehive: the 60's Musical* (Theatre by the Sea); *James and the Giant Peach*, *Big Fish*, *Our Town*, *Anatole* (First Stage Milwaukee); *Hall of Final Ruin*, *The Griots* (Renaissance Theaterworks); *Swan Lake* (Milwaukee Ballet). Television: *House Hunters*, *Extreme Cheapskates*, *Biggest Loser*. Love to LC, WW and CW.

KATE J. CUDWORTH (Production Stage Manager) has enjoyed nine seasons with TheaterWorks Hartford including *American Son*, *The River*, *Hand to God*, *The Invisible Hand*, *The Legend of Georgia McBride*, *The Wolves*, *Fade*, *Next to Normal*, *Sunset Baby*, *Relativity*, *Midsummer*, *Woody Sez*, and *Becoming Dr. Ruth*. Off-Broadway: *Freud's Last Session*, [title of show]. NY/Regional: Barrington Stage Company (8 seasons including *Freud's Last Session*; *Dr. Ruth*, *All The Way*; *Joe Iconis' The Black Suits*), Atlantic Stage Company, Hartford Stage, Manhattan School of Music (4 seasons), Yale Opera, York Theatre Company, Bronx Opera Company, Fringe NYC, NYMF.

ADAM BINTZ (Video Recording & Post Production) is a TheaterWorks Hartford company member in his fourth season as Audio Visual Supervisor. Adam has worked around the country at various regional theaters and venues including Portland Center Stage, Hartford Stage, and Walt Disney World. Sound Design credits include Theaterworks Hartford: *Elton Undressed*, *Every Brilliant Thing*. Regional: *Masks and the Monster* (The Other Voice), *Count, Sense & Sensibility*, *Dot*, *A Christmas Carol*, *Leaving Eden* (PlayMakers Repertory Company), *Love Letters* (Long Wharf Theater) *Romeo & Juliet*, *The Tempest* (Hall High School), *She Kills Monsters* (Hartford Academy of the Arts).

MIKE LENAGHAN (Director of Production) After eight years of teaching Set Design and Production at Kinsella Magnet School of Performing Arts, Mike returns to TheaterWorks Hartford as Director of Production. Mike's first stint with TheaterWorks began in 2004 with *The Ten Unknowns* and concluded in 2014 with *The Other Place*. For 55 productions, Mike was Technical Director, Production Manager, occasionally Props Master and Facilities Manager and on one special occasion, the Set Designer for *The Santaland Diaries*. Proud to be donning only one hat this time around, Mike is so excited to come home again. Mike's professional career began as an apprentice at Goodspeed Musicals (even if he faxed the wrong cover letter to the theatre) then he was off to the Juilliard School Production Department, Downtown Cabaret Theater and Westport Playhouse. Broadway credits include *Thoroughly Modern Millie*, *Our Town* and *Fortune's Fool*. Off Broadway: *The It Girl*, *Suburb* and *The Summer of '42*.

THANKS FOR MAKING THINGS HAPPEN



Hartford
Foundation
FOR PUBLIC GIVING



BANK OF AMERICA



GREATER HARTFORD
ARTS COUNCIL

J. WALTON BISSELL
FOUNDATION

TRAVELERS

The Edward C. & Ann T.
Roberts
FOUNDATION

Lincoln
Financial Foundation



HSB
A Munich Re company



Raytheon
Technologies

cthumanities



Bank

America's Most Convenient Bank®

Connecticut
still revolutionary



THE SHUBERT
FOUNDATION INC.

The Burry Fredrik Foundation

Cheryl Chase and Stuart Bear Family Foundation

Ensworth Charitable Foundation, Bank of America, N.A., Trustee

John and Kelly Hartman Foundation

The George A. & Grace L. Long Foundation, Bank of America, Co-Trustee

The Saunders Foundation

William and Alice Mortensen Foundation

Richard P. Garmany Fund at the Hartford Foundation for Public Giving

The Elizabeth M. Landon and Harriette M. Landon Charitable Trust

The Katherine K. McLane and Henry R. McLane Charitable Trust

Liberty Bank

Prudential Retirement

The
Goodwin

The Goodwin is the official hotel of TheaterWorks Hartford.

COVID SAFETY TEAM

Cecelia Chapman

Joshua Demers

Bill Farquhar

THANKS

Vinie Burrows, Rocco DiSanti, Robin Kelley, Emma McKeen, Phoenix Theatre
Indianapolis, Molly Stern

TWH STAFF

Producing Artistic Director
Rob Ruggiero

Producing Associate
Kate J. Cudworth

Director of Production
Mike Lenaghan

Company Manager/
Costume Supervisor
Cecelia Chapman

Resident Designer/
Design Coordinator
Brian Prather

Audio-Visual Supervisor
Adam Bintz

Lighting Supervisor
Carter Miller

Technical Director
Sasha Wahl

Master Carpenter
David Weaver

Assistant Stage Manager /
Wardrobe
Julius Cruz

IT Consultant
Dean Batchelder

Director of Development
Dina Silva

Development Associate
Erica T. Bryan

General Manager
Nicole LaFlair Nieves

Business Associate
Yaasmeen Cook

Operations Manager
Bill Farquhar

Director of Audience
Administration
Joshua Demers

House Manager
Sam Boushé

Audience Services
Miles Ruiz
Alexis Gardner
Will Prenetta

Director of Marketing/
Communications
Freddie McInerney

Marketing Associate
David Samuel

BOARD

Dina Plapler (President)

Stacy Brusa (Vice President)

Larry Samplatsky (Treasurer)

Kristen Phillips (Secretary)

Michael G. Albano

Jennifer DiBella

Grace Figueredo

Christopher R. Hayes

Gordon Hui

Evan Johnson

Lee G. Kuckro

Supriya S. Laknidhi

Felix Okwaning

Roberta Prescott

Robert Pulito

Philip Rigueur

Marcia Smith

NEW WORKS FESTIVAL VIRTUAL

THE DROP OFF was recorded virtually on February 27, 2022 with stage directions read by Jules Latimer

EGRESS was recorded virtually on April 23, 2022 with stage directions read by Kate J. Cudworth

ANDY WARHOL PRESENTS: THE COCAINE PLAY was recorded virtually on March 18, 2022 with stage directions read by Terry Guest

The actors in these recordings appear with the permission of Actors' Equity Association.

ANNUAL FUND DONORS

PLATINUM PARTNERS

Gifts of \$25,000+

Jeffrey and Nancy Hoffman
David Holmgren
LAZ Parking
The Estate of June M. Rosenblatt
Dennis Russo and WondriskaRusso
Ruth G. Timme Family Foundation
Theresa Waltz

GOLD PARTNERS

Gifts of \$10,000+

Lynn Beaulieu and Gerry Lupacchino
Mark Boelhouwer
Cheryl Chase and Stuart Bear Family Foundation
Edward and Tracy Church
Common Sense Fund
Robert and Francine Goldfarb
Ted and Adlyn Loewenthal
Thomas W. and Emily B. Nissley

SILVER PARTNERS

Gifts of \$5,000+

Anonymous
Matthew and Patricia Berky
Ted and Kathy Fleming
Richard P. Garmany Fund at HFPG
Brad M. and Jill J. Hutensky
William Knight and Jill Adams
Joy McConnell
Eric D. Ort and Duff Ashmead
Kristen M. Phillips and Matthew Schreck
Larry Samplatsky and John Tackus
Jonathan and Sherry Schreiber
Kevin and Marcia Smith
The Zachs Family Foundation
Joe Zimmel

BRONZE PARTNERS

Gifts of \$2,500+

Acorn-Alcinda Foundation
Michael G. Albano and Nancy B. Alisberg
Andrew Benator
Stacy Brusa
Helen and Henry Frye
The Gawlicki Family Foundation
Lee G. Kuckro
Jia Luo and Michael Monts
Barri R. Marks and Woody Exley
Jill and Martin Mass
Jacqueline and Dave Mott
Dina Plapler and Earl McMahon
Bob and Patti Pulito
Joan and Barry Richter
James M. Salemi and Kenneth J. Bartschi

LEADING DONORS

Gifts of \$1,000+

Doug and Sheryl Adkins	Katherine J. Lambert
Anonymous (2)	Christopher Larsen
Ivan A. Backer and Paula Fisher	Judy Lewis
Thomas O. and Melanie A. Barnes	Steve and Sheila Litchfield
Peter and Lisa Block	Kenneth and Cynthia Malm
James Bruno and William Gratz	Leta W. Marks
Karen K. Byrne	Sheila Marks
David and Lisa Casey	Marjorie E. Morrissey
Ann M. Catino	Richard E. and Paula Musgrave
Amy Charney and Lewis K. Wise	Roberta W. Prescott and Robert O. Hurwitz
Sue Ann Collins	Theresa Rebeck
Richard A. and Aida Cyphers	Elenor G. Reid
Catherine Daly and Roy Dion	Joan and Allan B. Reiskin
Jack and Alice Ellovich	Linda L. and Stephen E. Revis
The Fechter Family Foundation	Kenneth and Julie B. Saffir
Jocelyn and Dan Fenyn	Jennifer and Christian Sager
Muriel and Karl Fleischmann	Darlene C. and Guy A. Simonian
William Fuller	The Carol Sirot Foundation
Catherine Godin	Jen and Kenneth Siskind
Thomas Goodrum and Evelyn Benoit	Leslie Smith and Philip Wellman
William T. Gough and Jane Cook	Sue W. and Richard K. Smith
Peter Grzybala and Diane Korntheuer	Tyler Smith and Lyn Walker
Diana Haghighat and Gerardo Gutierrez	Karen Lee Snyder
Della Hennelly	Robert Stillman and Leslie Fass
Suzanne M. Hopgood	Donna M. and Sam Stout
Gordon and Kelly Hui	Robert H. Tabshey
Evan H. Johnson and Kevin Chick	Allan B. and Sally S. Taylor
David and Jan Klein	Dale Woodiel, Sr. and Linda Rountree
Dr. and Mrs. Bernard Kosto	Elliot Zweig and Doreen Fundiller-Zweig
Wally and Chris Lamb	

LOYAL SUPPORTERS

Gifts of \$250+

Cynthia L. Abrams	Peter Chester
P. K. and Phoebe R. Allen	Bertie Chuong
Gregory and Mona Anderson	Ann Clark and David Ehler
Anonymous (3)	Jonathan Clark
Stephen and Judy August	Steven and Elaine Cohen
Ann Azevedo and Donato T. DiGenova	Communication Strategies
Staci Bachman	James P. Condren and Ellen J. Robinson
Anthony and Beverley Bellisio	Tammy Conley and Roselinde Torres
Jay and Jeanne Benet	Audrey Conrad
Catherine and Bruce Bernstein	Susan B. Coogan
Scott Boden and Mary Ayre	Catherine and Joseph Costa
Paul and Joanne Bourdeau	Linda and Fred Cote
George Bouthet	Stephen and Suzanne Couture
Whitney Boynton and Kevin Galvin	James and Sheryll-Ann Covill
Lucy Brakoniecki	Evan Cowles and Brie Quinby
James and Riki Brodey	Mally and Jim Cox-Chapman
Julie A. Brogan and Christopher A. Uhrich	Lisa Curran
Avery and Eileen Buell	Jennifer and Marc A. DiBella
Mary and Ritchard Cable	Hollis Dorman
Shari and Michael Cantor	Beverly and Chris Doyle
John Cariani	Melissa J. Taylor-Doyle and Chris Doyle
Peter Carter	Susan and Ned P. Dunn
Susan R. Chandler	Dr. Barbara Edelstein

ANNUAL FUND DONORS

LOYAL SUPPORTERS

Gifts of \$250+

Diane Ellsworth
Carolyn Emerson
David W. Epstein
William and Joan Farquhar
David and Peggy Fay
Stanley and Susan P. Fellman
Mary Kay Fenton
Grace Figueredo and Ken Gostyla
Christine Fisch
Michael and Evelyn Fishman
Jerry and Ida Franklin
Catherine Franks
Timothy A. and Roxane M. Fromson
Elizabeth Gagne
Rachel Galligan
Robert Garrey
Tom and Cynthia Garten
Ken and Jennifer Geisler
Deborah Ghosh
Alice and Gary Gold
Daniel G. Green and Walter Langner
Pierre and MaryEllen Guertin
Laura Harris
Brian E. Harvey and Sherry A. Manetta
Frank Haviland and Shirley Mae Neu
Joan Hedrick
Felice Heller and Michael Steinberg
Ronald V. and Patricia Hensley
Warren Hollister
Jacqueline Hubbard and Norman Needleman
Christine Hunihan
Bradley and Lisa Hurley
Sharon and David Jepson
David Jimenez
Alan and Carolyn Kaufman
Marian Kellner
Donna M. Kidwell
Jennifer and James Kimenker
Kitchen and Bath Design Construction
Myra R. and William Kleinman
Michele and Dane Kostin
Nancy A. Kramer
David J. and Ruth Krugman
Supriya and Vijay Laknidhi
Susannah Landis
Marcia Lattimore
Ann and Bill Lazarek
Charles and Joan Leach
William and Deanna Leikin
John W. and Joyce R. Lemega
Doreen Linton
Steve and Sheila Litchfield
Peggy Lorence
Kathleen Lovell
David T. and Judith W. Macri
Gloria Magliozzi
Adam and Beth Man
Dr. Christopher K. Manning and Chuck Riott
Guy and Sharon Marhewka
Eileen M. Marks and Ed Mikolowsky
Judy and Scott Mather
Erin McGurk
Elizabeth R. and Stephen Miller
David Miner and Stephanie Robiner
Brian Molinari and Kristan Pierz
Sheila and Randall Molony
Susan Monks and Mary-Ann McNamara
Johanna Morrison
Leigh Newman and Gary Starr
Kathy and Walter Nicksa
Don Noel
Daniel and Lori O'Connell
Bill and Joy O'Sullivan
Felix Okwaning
Michelle and Sam Oliva
Richard Orr and Cynthia Courtney
Joseph Pace
Vittoria Pace
Alan and Jennifer Paneccasio
Alan and Michele Parker
Sara and Tim Parker
Priscilla Pasternak
David Pavis
MaryJane Perrier
Adam E. and Alison S. Perrin
Arlene and Robert Person
Randi and Steve Piaker
Raphael Podolsky and Jill Mehler
Matthew K. Poland
Leslie Pollack
Frances Porter
Laura Post and Mark Pazniokas
Marion and Seth Radeen
Jo-Anne Rankin and John Williams
Margaret and Charles Rich
Annemarie H. Riemer
Christina and Ezra Ripple
Harvey and Carol Robbin
Jo Ann Roberts
Nancy and Stephen Roberts
Deborah Roncari
Michele Rosenberg
Joel and Susan Rottner
Barbara Rubin
Rob Ruggiero
Sandra H. and Marshall Rulnick
Mary Beth Russell
William Goba and Joan Russoniello-Goba
Linda M. Samoncik
Martha Sandefer and Frederick Sweitzer

LOYAL SUPPORTERS

Gifts of \$250+

Saraellen and Tom Sargent	Felix J. and Helene L. Springer
Phyllis Satter	Beatrise Srams
William Schaberg	John Stachniewicz
Roberta P. and Philip A. Schmidt	Glenn Stanisewski
Leon H. and Brenda Seitelman	Barbara and Leon Stechenberg
Elizabeth and Stephen J. Shamroth	Cynthia B. and Alan L. and Adam Stern
Sandra L. Shaner	James G. and Marcia E. Sutton
Debbie and Jim Shmerling	Jeff Rudikoff and Edee Tenser
Joseph Shortall and Sara Bernstein	Roberto Tollis
Shortell Framing	Humphrey Tonkin and Jane Edwards
Barbara Sicherman	Dan and Janet Tracy
Penny and Steve Sigal	Maria Tsitsirides
Dina Silva	Douglas and Mildred Unfried
Amy Lynn Silverman	Miranda Haeseler-Volpe and John Volpe
Douglas and Roberta Simpson	Laura and Matthew Wallace
Mark Slitt	Robert and Penelope Whalen
Gilbert and Ruth L. Small	Gretchen H. Wiedie
Sharon W. and Robert H. Smith	Karen and Philip Will
Shirley Smith	Lawrence and Deena Williams
Patricia B. Snyder	Susan Williams and Kanani Bell
Emily and Norman Sondheimer	Arnold and Myrna Wyse
Ruth and Howard Sovronsky	Peter M. and Ellen T. Zeman
Catherine J. Spera	Alexander P. and Bella Zubkov



AN OASIS OF CLASSICAL AND CLASSIC MUSIC

WMNR.ORG

88.1FM 91.5FM 90.1FM

ACTORS' EQUITY ASSOCIATION (AEA) was founded in 1913 as the first of the American actor unions. Equity's mission is to advance, promote and foster the art of live theatre as an essential component of our society. Today, Equity represents more than 40,000 actors, singers, dancers and stage managers working in hundreds of theatres across the United States. Equity members are dedicated to working in the theatre as a profession, upholding the highest artistic standards. Equity negotiates wages and working conditions and provides a wide range of benefits including health and pension plans for its members. Through its agreement with Equity, this theatre has committed to the fair treatment of the actors and stage managers employed in this production. AEA is a member of the AFL-CIO and is affiliated with FIA, an international organization of performing arts unions. For more information, visit actorsequity.org

TERRENO BAR PIÑA

**GOOD TIMES ARE RIGHT
AROUND THE CORNER**

DINNER BEFORE THE SHOW

PRIX FIXE

3 COURSES

\$35 / PERSON

SERVED 5-9PM



DRINKS AFTER THE SHOW



SERVING IN BAR PIÑA


**LOCATED ONE BLOCK FROM THE THEATER IN THE
GOODWIN HOTEL**

1 HAYNES ST. 860.904.2101

PINAHARTFORD.COM

THE ROB RUGGIERO INNOVATION FUND

Anonymous
Mr. Peter Arakas and Ms. Karen
Kellerman
Virginia Argenio
Ivan A. Backer and Paula Fisher
Lynn Beaulieu and Gerry Lupacchino
Martha and Bob Belliveau
John and Laura Berman
John W. Bialobrzski and Janet Rooney
Patti Broad
Chester and Glenna Brodnicki
James Bruno and William Gratz
Patricia Carrigan
Polly Champ
Martin and Lorry Clayman
Catherine Conlin
Susan B. Coogan
Jane V. Coughlin and Keith R. Cudworth
Evan Cowles and Brie Quinby
Marisa Dal Ponte
Marjorie and Ronald Debold
Ms. Nancy M. Depalma
Sharon F. and George Dickerman
Art Feltman and Dale James Wallington
Joan Fox
Arthur Franklin
Jerry and Ida Franklin
Catherine Franks
Helen and Henry Frye
Carol and Peter Ganick
Ken and Jennifer Geisler
Robert and Francine Goldfarb
Felice Goldman
Firooz and Maria Golkar
William T. Gough and Mary J. Cook
Eileen Griffin
Lillian G. Harter
Ronald V. and Patricia Hensley
Beverly J. and Richard L. Hughes III
Polly Huntington
Susan Huntington
Valerie and Mathew Jasinski
Evan H. Johnson and Kevin Chick
Kitchen and Bath Design Construction
Dr. Alan and Lydia Klatsky
David and Jan Klein
Linda Koflanovich
Michele and Dane Kostin
Darwin W. and Susan Kovacs
Lee G. Kuckro
Nancy and Jerry Lahman
Annette Landry
Marcia Lattimore
John W. and Joyce R. Lemega
Sherwood and Gwendolyn Lewis
Peggy Lorence
Diane Mack and Robin Gilmartin
David T. and Judith W. Macri
Gloria Magliozzi
Lenore Mand
Judith C. and David L. McChesney
Joy McConnell
Kenton McCoy
Anthony Michalak
Thomas and Marjorie Michalski
Rachel Miller
Marjorie E. Morrissey
Richard E. and Paula Musgrave
Barbie Nadal-Cristofaro and Victor
Cristofaro
Wilbur J. and Amy Sevell Nelson
Julia O'Brien
Dottie O'Meara
Nancy Pacht
Marlene Passman
Gerald Pastor and Jane Porterfield
Kristen M. Phillips and Matthew Schreck
Dina Plapler and Earl McMahon
Leslie Pollack
Roberta W. Prescott and Robert O.
Hurwitz
Susan Rathgeber
Martey S. Rhine
Margaret and Charles Rich
Margaret Rick
Christina and Ezra Ripple
Alice B. and Robert Rodner
Sari and Jim Rosokoff
Marjorie Ross
Barbara Rubin
Linda Ryan
Jennifer and Christian Sager
The Carol Sirot Foundation
Jen and Kenneth Siskind
Larry Starr
Kate Steven
Dot and George Stone
Donna M. and Sam Stout
Mervyn Strauss
Robert H. Tabshey
The Ruth G. Timme Family Foundation
Mary Lee Morrison
Hope W. Vath
Theresa Waltz
Peter M. and Ellen T. Zeman



Perfect Rings



LUX BOND & GREEN

JEWELERS SINCE 1898

800.524.7336 | LBGreen.com

GLASTONBURY • MOHEGAN SUN • WEST HARTFORD • WESTPORT • WELLESLEY

EVERY BOX  HAS A STORY™