

The DEVIL'S in the DETAILS!

CLYDE'S

by **Lynn Nottage**

directed by
Mikael Burke



July 7 thru 30

**THEATER
WORKS
HARTFORD**

twhartford.org

From the Director

Imagine the perfect sandwich.
Do you see the beauty?
The delicious combination of flavors?
Perfect.
Now imagine the perfect You.
Do you see the beauty?
The delicious combination of flavors?
Or
Do you only see the imperfections?
The flaws?
The mistakes?
Sometimes we all get trapped in prisons
Of our own self-loathing.
But how do we get out?
How do we break free?
When the world tells us we're nothing,
How do we remember that we're more
Than just the sum of our parts?
Why is it so hard to believe
That we are nothing less than
Perfect,
Just as we are?
Try again
– Mikael Burke

Lead Producing Partner
MARJORIE E. MORRISSEY

Producing Partners

The Edward C. & Ann T.
ROBERTS
FOUNDATION



ETCH

**JOHN AND KELLY HARTMAN
FOUNDATION**

Supporting Partner
FLOYD W. GREEN, III

Programming Partner
**COMMUNITY PARTNERS IN ACTION
and The Prison Arts Program**

twhartford.org

#Clydes



#theaterworkshartford

#twh



#twhartford

CLYDE'S

by **LYNN NOTTAGE**

directed by **MIKAEL BURKE**

THE CAST

(in order of appearance)

Clyde	LATONIA PHIPPS*
Montrellous	MICHAEL CHENEVERT*
Letitia	AYANNA BRIA BAKARI*
Rafael	SAMUEL MARÍA GÓMEZ*
Jason	DAVID T. PATTERSON*

Set Design	COLLETTE POLLARD
Costume Design	ALEXIS CARRIE
Lighting Design	ERIC WATKINS
Sound Design	CHRISTIE CHILES TWILLIE
Casting Director	TBD CASTING/ STEPHANIE YANKWITT, CSA
Stage Manager	NICOLE WIEGERT*
Associate Set Design	DELENA BRADLEY
Intimacy Coordinator	MARIE C. PERCY

World Premiere by the Guthrie Theater

Originally commissioned by Joe Dowling and produced by Joseph Haj, Artistic Directors
Broadway Premiere Produced by Second Stage Theatre, New York, 2021 Carole Rothman,
Artistic Director, Khady Kamara, Executive Director

CLYDE'S is presented by special arrangement with Dramatists Play Service, Inc., New York.

* Appearing through an agreement between this theater and Actors' Equity Association,
the Union of Professional Actors and Stage Managers in the United States

United Scenic Artists, Local USA 829 of the IATSE is the union representing Scenic,
Costume, Lighting, Sound and Projection Designers in Live Performance.



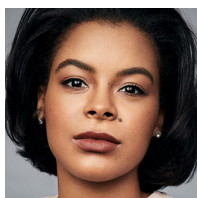
UNITED
SCENIC
ARTISTS

TheaterWorks Hartford is celebrating its 37th season as a non-profit,
professional theater company. Founded in 1985.

CLYDE'S is the 4th show of the 2022-2023 Season.

TheaterWorks Hartford • 233 Pearl Street • Hartford, CT 06103 • 2023

WHO



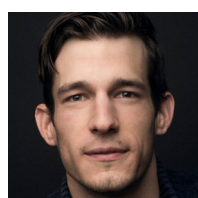
AYANNA BRIA BAKARI (Letitia) was seen previously at **TheaterWorks Hartford** in 2022's New Works Festival as Marilyn Monroe in *Andy Warhol Presents: The Cocaine Play* by Terry Guest. Theater credits include *Last Night And The Night Before* (Steppenwolf), *Relentless* (Timeline Theatre, Goodman Theatre), *Too Heavy For Your Pocket* (Timeline Theatre), *How To Catch Creation* (Goodman Theatre), *As You Like It* (Chicago Shakespeare Theater), *The Originalist* (Indiana Repertory Theatre), *Suddenly Last Summer* (Raven Theatre), *Stick Fly* and *The Niceties* (Black Theater Alliance Award Recipient at Writers Theatre). TV/Film: *Wu-Tang: An American Saga* (Hulu), *The CHI* (Showtime), *Chicago PD*, *Chicago Fire*, *Empire* (FOX), *61st Street* (AMC) and *Holiday Heist* (BET). Ayanna Bria graduated with a BFA in acting from The Theatre School at DePaul University. She is a governing ensemble member of The Story Theatre in Chicago and is represented by Stewart Talent. **BLACK LIVES MATTER.**



MICHAEL CHENEVERT (Montrellous) is thrilled to return to **TheaterWorks Hartford** where he most recently performed in *The Rembrandt*. Regional Theater credits include: Bay Street Theater, Westport Country Playhouse, Arkansas Repertory, Repertory Theatre of St. Louis, Cincinnati Playhouse in the Park, and Crossroads Theater. TV credits: *The Equalizer*, *Terror Lake Drive*, *New Amsterdam*, *Godfather of Harlem*, *Ugly Betty*, *Boardwalk Empire*, *The Following*, *Law & Order: SVU*. Film credits: *Syrup*, *The Tombs*, and *Interference*. Michael has a BFA from University of Detroit Mercy. He has also studied at LIR at Trinity College in Ireland, the Barrow Group and at Susan Batson Studio. Michael has written and performed a one-man show, called *An Adam Experiment*.



SAMUEL MARÍA GÓMEZ (Rafael) is making his **TheaterWorks Hartford** debut. Samuel is a first generation American-Dominican Actor, Writer and Producer hailing from New York City. He is most recently known for his work on ABC/Netflix *The Beauty and The Baker*, Marvel's *The Punisher* Season Two and his lead series regular appearance on the original web-series, *The Bodega*. He has appeared in popular shows such as *Madam Secretary*, *Elementary*, *Law & Order: SVU* and FOX's *Prodigal Son*, *Blue Bloods* and most recently, *FBI*. He also is credited with writing and producing the shorts *Lucid* and *The Spectacular Tito Garcia* as well as being the creative mind behind the actor centric platform, *Monovlogs Presents*. Samuel is taking a year long social media detox at the moment and he encourages everyone to consider doing the same!



DAVID T. PATTERSON (Jason) is making his **TheaterWorks Hartford** debut. Broadway: *Who's Afraid of Virginia Woolf?*, *Les Liaisons Dangereuses*. Off-Broadway: *Picnic*, *Come Back Little Sheba* (Transport Group). Regional credits: *Dracula: A Comedy of Terrors* (Capital Rep), *Meteor Shower* (Theatre Workshop of Nantucket), *Noises Off* (Cape Playhouse), *Sacred Valley* (Powerhouse Theater), *Third* (Hangar Theater), *Spamalot*, *Guys and Dolls* (Weathervane Playhouse). TV: *FBI*, *Blue Bloods*, *Only Murders in The Building*, *The Gilded Age*, *Law & Order*, *The Path*, *Instinct*. Graduate of Carnegie Mellon University.



LATONIA PHIPPS (Clyde) is making her TheaterWorks Hartford debut. She is an actress & writer who hails from Brooklyn, NY. Credits include *Clyde's* at City Theater, *School Girls; or, The African Mean Girls Play* at The Hangar Theater, *Measure for Measure* at The Public Theater, Dominique Morisseau's *Autumn's Harvest* at Lincoln Center, and Katori Hall's *Children of Killers*. Her TV/Film credits include *Didn't I Ask For Tea* on Amazon Prime and *The Klein Syndicate*. You can also catch her on the new BET PLUS show *Diarra From Detroit*. Phipps made her mark as a writer with her tour-de-force one woman show, *Fishing In Brooklyn* and is currently working on writing and creating her first feature film, *Untitled*. Phipps would like to thank God and her family for their support. She's excited for the opportunity to embark on yet another journey.



LYNN NOTTAGE (Playwright) is the first woman in history to win two Pulitzer Prizes for Drama. Her plays have been produced widely in the United States and throughout the world. Broadway credits include *Clyde's* (2ST) and *Sweat*, and the libretto for the musical *MJ*. Other work includes the libretto for the opera *Intimate Apparel* (Lincoln Center Theater); co-curating the performance installation *The Watering Hole* (Signature Theater); the libretto for the musical adaptation of *The Secret Life of Bees*; as well as her plays *Mlima's Tale*; *Fabulation, or the Re-Education of Undine*; *Crumbs from the Table of Joy*; *Las Meninas*; *Mud, River, Stone*; *Por'knockers*; and *POOF!*. She has also developed *This is Reading*, a performance installation in Reading, Pennsylvania. Ms. Nottage is the recipient of a MacArthur "Genius Grant" Fellowship, among other awards, is an associate professor at Columbia University School of the Arts and is a member of the Dramatists Guild.



MIKAEL BURKE (Director) is a Chicago-based director, deviser, and educator. A Princess Grace Award-winner in Theatre and Jeff Award-nominated director, Mikael's worked with Goodman Theatre, About Face Theatre, Victory Gardens Theatre, Northlight Theatre, Raven Theatre, Jackalope Theatre Company, Remy Bumppo Theatre Company, First Floor Theater, American Theatre Company, Chicago Dramatists, The Story Theatre, and Windy City Playhouse in Chicago, and regionally with Forward Theatre, Urbanite Theatre, Milwaukee Chamber Theatre, Indiana Repertory Theatre, Asolo Repertory Theatre, Geva Theatre Center, Phoenix Theatre Indianapolis. Recent directing credits include the world premiere of *The Magnolia Ballet* by Terry Guest, *The Wanderers* by Anna Ziegler, *Fireflies* by Donja R. Love, *Mrs. Harrison* by R. Eric Thomas, *we are continuous* by Harrison David Rivers. mklburke.com



COLLETTE POLLARD (Set Design) resides in Chicago and is thrilled to make her debut at TheaterWorks Hartford. Regional credits include *Angry, Raucous and Shamelessly Gorgeous* (Hartford Stage and Alliance Theatre), *The Legend of Georgia McBride* (Arizona Theatre Company), *Little Women* (Seattle Repertory Theatre and Milwaukee Repertory Theatre), *Fannie* (Indiana Repertory Theatre), *What the Constitution Means to Me*, *Steel Magnolias*, *Eclipsed* and *The Chinese Lady* (Milwaukee

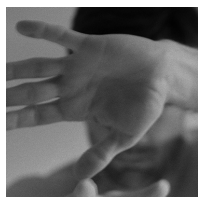
WHO

Repertory Theatre) and *The Cake* (The Asolo Repertory Theatre). Chicago credits include *Describe the Night*, *Lindiwe*, *HIR*, *The Fundamentals*, *Between Riverside and Crazy*, *Head of Passes* (Steppenwolf Theatre Company), *FEN*, *Orlando and The Illusion* (Court Theatre), *English*, *Fannie*, *Roe*, *The Wolves*, *The Happiest Song Plays Last*, and *Fish Men* (Goodman Theatre), *Smart People* (Writers Theatre), *Gypsy*, *Big Fish* and *The Sound of Music* (Marriott Theatre), *The Lehman Trilogy* and *A Shayna Maidel* at Timeline Theatre where she is a company member and artistic associate. Collette is the recipient of several Jeff Awards, was nominated by the Connecticut Critics Circle Awards for her design of *Angry, Rauous and Shamelessly Gorgeous* and is an Associate Professor of Design at the School of Theatre and Music at UIC. Many thanks to the endless support from her family.



ALEXIS CARRIE (Costume Design) is a LA-based costume designer and textile artist. Recent and upcoming film, television and theatrical credits include *A Place of Bones* (Goldrush Entertainment), *Legacies* Season 4 (Warner Brothers), *What to Send Up When It Goes Down* (Congo Square Theater), *Untitled Baby Play* (IAMA Theater). Originally from Washington

D.C., she has an MFA in Costume Design from Carnegie Mellon University and a BA in Interdisciplinary Studies in the Humanities from the University of Chicago. She is an alum of the artEquity National Facilitator training and seeks to bring the practices of equity and inclusion to all her projects. She is a proud founding member of First Floor Theater in Chicago. You can find her work at alexiscarrie.com



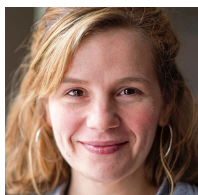
ERIC WATKINS (Lighting Design) designs for theatre, opera, and dance and is based in Chicago.

Chicago (selected): *Our Dear Dead Drug Lord* (Steep); *A Mile in the Dark* (Rivendell), *Routes* (Remy Bumppo), *The Magnolia Ballet* (About Face Theatre), *Fireflies* (Northlight Theatre), *Sugar in Our Wounds* (Jeff Nomination) and *Hooded: or Being Black for Dummies* (First Floor Theater); *Alaiyo and EthiopianAmerica* (Definition Theatre Company); *Machinal* (The Greenhouse Theater Center; Jeff nomination); *In The Blood* (Red Tape); *A Swell In The Ground* (The Gift); *The Man Who Was Thursday* (Lifeline); *Shakin' the Mess Outta Misery* (Pegasus); *Punk* (The New Colony); *Bomber's Moon* (Williams Street Rep); *Fallen* (Mozawa); *Porcelain* (Prologue; Jeff nomination); *The Property* (Lyric Unlimited) and many more. REGIONAL/INTERNATIONAL (selected) *Baba* (Amphibian Stage, TX); *Ariadne* (Arizona Opera); *Mrs. Harrison* (Indiana Rep); *Don Pasquale* (Fort Worth Opera); *Hansel and Gretel*; *Show Boat*; and *Falstaff* (Dallas Opera); *A Streetcar Named Desire* (Opera Santa Barbara and Kentucky Opera); *The Rake's Progress* (Merola Opera); *The Barber of Seville* (Lithuanian National Opera); *Song of Home* (Theatre Lumina – Eastern European tour). Eric received his MFA from Boston University and is a proud member of USA Local 829, the theatrical design union. ericwatkins.com



CHRISTIE CHILES TWILLIE (Sound Design) is a Pianist, Music Director, Sound Designer, Composer/Orchestrator. Her credits include: *A Raisin in the Sun* (Invictus), *The Niceties* (Forward), *The Mountaintop* (American Players), *Carmela Full of Wishes* (Chicago Children's Theatre, FirstStage, Seattle Children's Theatre), *We Are Continuous*, *VietGone* (GEVA), *The Way She Spoke* (Milwaukee Chamber), *Shapeshifters* (UArts), *Homeland 24: The People's Play* (Music for Theatre Chicago) and Milwaukee Black Theatre Festival productions *Black Butterflies*, *Pretty Fire*, *Kill Move Paradise*, *Stew and Home*. Her film scores include *The Pandemic Trilogy*,

The Clearing, Alone and the documentary *A Space for Empathy*. Christie is a member of the American Federation of Musicians; Theatre Musicians Association; MUSE (Musicians United for Social Equity), and she is a Board Member for MAESTRA.



STEPHANIE YANKWITT / TBD CASTING CO (Casting Director | she/her) Upcoming: *The Whitney Album* (Soho Rep), *SUMO* and *Babbitt* (La Jolla Playhouse). Currently/ Recent: **TheaterWorks Hartford's** *The Rembrandt*), Soho Rep's *Wolf Play* (MCC Theater), *Crumbs From The Table of Joy* (Keen Company), *Smart* (EST), *The Coast Starlight* (LCT), *Here There Are Blueberries* (Tectonic/STC), *Hang Time* (The Flea Theater). Resident Casting Director: Soho Rep & Tectonic Theater Project. Regular collaborators also include Long Wharf Theatre, Primary Stages, The Sol Project, NAATCO, and La Jolla Playhouse. Two films currently in development: one with Lexicon Films/Exile Content Studio, one with Plotnaut Pictures. Member: CSA, Equity in Entertainment Committee.



ROB RUGGIERO (Producing Artistic Director) has been part of **TheaterWorks Hartford** artistic leadership for 30 seasons. He has directed over 65 shows, including TWH productions of *Fun Home*, *The Sound Inside*, *American Son*, *The Legend of Georgia McBride*, *Constellations*, *Next to Normal*, *Relativity* (starring Richard Dreyfuss) and *Christmas on the Rocks*, which he also conceived. His Broadway credits include *Looped* (starring Valerie Harper in a Tony-nominated performance) and *High* (starring Kathleen Turner) which had its world premiere at TWH. He also conceived and directed the musical revue *Make Me a Song: The Music of William Finn* which moved off-Broadway and was nominated for Drama Desk and Outer Critics Circle Awards. Rob conceived and directed *Ella*, a musical about Ella Fitzgerald, which saw sold-out runs in 24 regional theaters and was produced as a National Tour. His work on plays and musicals has received multiple awards in Connecticut and around the United States. Rob recently directed *A Grand Night for Singing* at Goodspeed Musicals where over his 14-year relationship he has directed many award-winning musical productions. Internationally he directed *Fiddler on the Roof* in Athens, Greece.

MIKE LENAGHAN (Director of Production) After eight years of teaching Set Design and Production at Kinsella Magnet School of Performing Arts, Mike returns to **TheaterWorks Hartford** as Director of Production. Mike's first stint with TheaterWorks began in 2004 with *The Ten Unknowns* and concluded in 2014 with *The Other Place*. For 55 productions, Mike was Technical Director, Production Manager, occasionally Props Master and Facilities Manager and on one special occasion, the Set Designer for *The Santaland Diaries*. Proud to be donning only one hat this time around, Mike is so excited to come home again. Mike's professional career began as an apprentice at Goodspeed Musicals (even if he faxed the wrong cover letter to the theatre) then off to the Juilliard School Production Department, Downtown Cabaret Theater and Westport Playhouse. Broadway credits include *Thoroughly Modern Millie*, *Our Town* and *Fortune's Fool*. Off Broadway: *The It Girl*, *Suburb* and *The Summer of '42*.

NICOLE WIEGERT (Production Stage Manager) **TheaterWorks Hartford:** *Queen of Basel*, *Fun Home*, *Zoey's Perfect Wedding*, *This Bitter Earth*, *Christmas on the Rocks*'21, *Walden*. Regional: Goodspeed Opera House, Hartford Stage, Long Wharf, CT Rep, Mountain Playhouse, Ivoryton Playhouse, Theater by the Sea, First Stage Milwaukee, Renaissance Theaterworks, Milwaukee Ballet, Milwaukee Public Theater, Milwaukee Chamber Theater. Television: *House Hunters*, *Extreme Cheapskates*, *Biggest Loser*. Other: Love to LC, WW and CW.

WHO

DELENA BRADLEY (Associate Set Design) is a costume and scenic designer currently based out of Chicago, IL. Recent credits include: scenic design for *Yerma* at University of Illinois Chicago, assistant scenic designer for *Describe The Night* at Steppenwolf Theatre (Chicago), costume design for *Estado Vegetal* at Zilker Botanical Garden (Austin, TX), *Seedfolks* at Metro Theatre Ensemble (St. Louis), *Much Ado About Nothing* at Asolo Repertory Theatre/FSU (Sarasota), costume and scenic design for *The Infinite Energy of Ada Lovelace* with Third Eye Theatre Ensemble (Chicago), and production and costume design for *Addict Named Hal* a feature film by Lane Stanley (Austin, TX). Delena teaches costume design at North Central College. She received her M.F.A. from The University of Texas at Austin in 2020, and bachelor's degree in theatre technology and design from Ball State University.

ACTORS' EQUITY ASSOCIATION (AEA) was founded in 1913 as the first of the American actor unions. Equity's mission is to advance, promote and foster the art of live theatre as an essential component of our society. Today, Equity represents more than 40,000 actors, singers, dancers and stage managers working in hundreds of theatres across the United States. Equity members are dedicated to working in the theatre as a profession, upholding the highest artistic standards. Equity negotiates wages and working conditions and provides a wide range of benefits including health and pension plans for its members. Through its agreement with Equity, this theatre has committed to the fair treatment of the actors and stage managers employed in this production. AEA is a member of the AFL-CIO and is affiliated with FIA, an international organization of performing arts unions. For more information, visit actorsequity.org

CLYDE'S CREW

Stage Management Intern
Maddie McAuliffe

Scenic Charge
Erin Sagnelli

Scenic Artists
Andrew Bates
Joseph DePalmer
Amelia Pizzoferrato

Costume Intern
Matthew Knight

Light Board Programmer
Chris Bell

Electrician
Bryan McManamy

Sound Board Operator
Finn McCarty

Light Board Operator
Gem Mercado

Carpenter
Joseph DePalmer



AN OASIS OF CLASSICAL AND CLASSIC MUSIC

WMNR.ORG

88.1FM 91.5FM 90.1FM

TERRENO BAR PIÑA

GOOD TIMES ARE RIGHT AROUND THE CORNER

DINNER BEFORE THE SHOW /
DRINKS AFTER THE SHOW



SERVING IN BAR PIÑA AND TERRENO

LOCATED ONE BLOCK FROM THE THEATER IN THE
GOODWIN HOTEL

1 HAYNES ST. 860.904.2101

PINAHARTFORD.COM

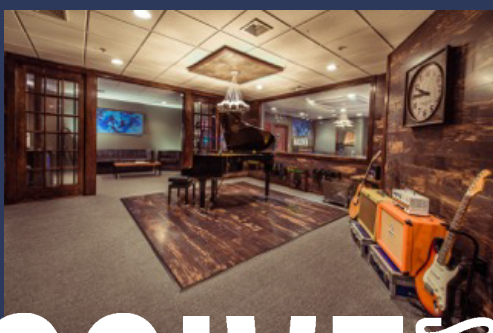
award-winning

innovative

sound design

composition

production



MASSIVE PRODUCTIONS

Matt Berky's work has been acknowledged by the **Silver Microphone Awards**, the prestigious **Telly Awards** for music scoring and the **Communicator Awards** for radio production technique. His music can be heard around the world on radio and television, medical animations, corporate videos, films and documentaries.

Massive Productions • 2360 Main Street • Rocky Hill
860.721.7444 • matt@massiveproductions.com
Matt Berky — Owner / Engineer / Composer

THANKS

THANKS FOR MAKING THINGS HAPPEN



Hartford
Foundation
FOR PUBLIC GIVING



BANK OF AMERICA



GREATER HARTFORD
ARTS COUNCIL

**J. WALTON BISSELL
FOUNDATION**

TRAVELERS

The Edward C. & Ann T.
Roberts
FOUNDATION

Lincoln
Financial Foundation



HSB
A Munich Re company



Raytheon
Technologies

cthumanities



Bank

America's Most Convenient Bank®

Connecticut

still revolutionary

THE
SHUBERT
FOUNDATION INC.

The Burry Fredrik Foundation

Cheryl Chase and Stuart Bear Family Foundation

Ensworth Charitable Foundation, Bank of America, N.A., Trustee

John and Kelly Hartman Foundation

The George A. & Grace L. Long Foundation, Bank of America, Co-Trustee

The Saunders Foundation

William and Alice Mortensen Foundation

Richard P. Garmany Fund at the Hartford Foundation for Public Giving

The Elizabeth M. Landon and Harriette M. Landon Charitable Trust

The Katherine K. McLane and Henry R. McLane Charitable Trust

Liberty Bank

The
Goodwin
Hartford's boutique hotel

The Goodwin is the official hotel of TheaterWorks Hartford.

SEASON PARTNERS

TYLER ANDERSON / TERRENO & BAR PIÑA

SALUTE

LAZ

DUNKIN' PARK

**THANKS TO E. JOHN MCGARVEY
AND LES CHEVEUX SALON**

MORE THANKS

Collette Benoit / Hartt School Costume Shop, Matt Berky / Massive Productions, Ben Dubow / Fire x Forge, Jackie Costabile, Hartford Stage, University of Hartford Scene Shop, R. J. Kinsella Magnet School of Performing Arts

TWH STAFF

Producing Artistic Director
Rob Ruggiero

Producing Associate
Kate J. Cudworth

Director of Production
Mike Lenaghan

Company Manager/
Costume Supervisor
Cecelia Chapman

Resident Designer/
Design Coordinator
Brian Prather

Audio-Visual Supervisor
Adam Bintz

Technical Director
Sasha Wahl

Master Carpenter
David Weaver

Assistant Stage Manager/
Wardrobe
Julius Cruz

AOCA Fellow/Social Media
Joël Cintron

IT Consultant
Dean Batchelder

Director of Development
Dina Silva

Development and Community
Engagement Associate
Erica Tracy Sullivan

General Manager
Nicole LaFlair Nieves

Business Associate
Yaasmeen Cook

Operations Manager
Bill Farquhar

Director of Audience
Administration
Joshua Demers

House Manager
Sam Bousheé

Audience Services
Alexis Gardiner
Will Prenetta
Nicole Barnes

Director of Marketing/
Communications
Freddie McInerney

Marketing Associate
David Samuel

Bartender
Alex Rocha

COVID SAFETY TEAM

Cecelia Chapman
Joshua Demers
Bill Farquhar

BOARD

Dina Plapler (President)

Kristen Phillips (Vice President)

Larry Samplatsky (Treasurer)

Grace Figueredo (Secretary)

Jennifer DiBella (Asst Secretary)

Michael G. Albano

Stacy Brusa

Fernando Ferro

Christopher R. Hayes

Gordon Hui

Stephanie A. Johnson

Lee G. Kuckro

Supriya S. Laknidhi

Françoise A. Miller

Felix Okwaning

Robert Pulito

Marcia Smith

Christopher White

HOTCAKES

Family Restaurant

fresh & delicious
breakfast and lunch



fresh breads, muffins, danish and turnovers baked daily from scratch

10 different types of pancakes & french toast served with fresh fruit

homemade soup and salads

hand packed burgers

or delicious eggs and omelettes served all day long

860.623.9969

238 S Main St, East Windsor, CT

Subscribe Now! SEASON 23/24

4 PLAY SUBSCRIPTION

Everything you love about being a SUBSCRIBER!

Live performances + any virtual content we create
for one low price. **It's simple!**

CLASSIC Subscription

\$190 (Best Price)

PLUS Subscription

\$260 (Best Seats)

NEW THIS YEAR...

Each subscription comes with a

1 BUDDY PASS + 1 Free Drink

(share a show w/ a friend + have a drink on us)

twhartford.org

SEASON 23/24



ANNUAL FUND DONORS

PLATINUM PARTNERS

Gifts of \$25,000+

Cheryl Chase and Stuart Bear Family Foundation
David Holmgren
The Hoffman Family
The Richard P. Garmany Fund at HFPG
LAZ Parking
Marjorie E. Morrissey
Thomas W. and Emily B. Nissley
The Estate of June M. Rosenblatt
Dennis Russo and WondriskarRusso
Ruth G. Timme Family Foundation
Theresa Waltz

GOLD PARTNERS

Gifts of \$10,000+

Common Sense Fund
ETCH
Robert and Francine Goldfarb
Suzanne M. Hopgood
Ted and Adlyn Loewenthal

SILVER PARTNERS

Gifts of \$5,000+

Anonymous
Matthew and Patricia Berky
Grace Figueredo and Ken Gostyla
Ted and Kathy Fleming
Floyd W. Green, III
William Knight and Jill Adams
The Elizabeth M. Landon and Harriette M. Landon Charitable Foundation
Joy McConnell
The Katharine K. McLane and Henry R. McLane Charitable Trust
Eric D. Ort and Duff Ashmead
Kristen M. Phillips and Matthew Schreck
Dina Plapler and Earl McMahon
Dr. Anne Rothstein and Jane Hellman
Larry Samplatsky and John Tackus
Elizabeth Schiro and Stephen Bayer
Jonathan and Sherry Schreiber
Kevin and Marcia Smith
Elizabeth Vandeventer
The Zachs Family Foundation
Joseph Zimmer

BRONZE PARTNERS

Gifts of \$2,500+

Doug and Sheryl Adkins
Anonymous
Staci Bachman
Ivan A. Backer and Paula Fisher
Andrew Benator

BRONZE PARTNERS (continued)

Gifts of \$2,500+

Jacqueline Berkowitz
 James Bruno and William Gratz
 Stacy Brusa
 Amy Charney and Lewis K. Wise
 Peter Grzybala and Diane Korntheuer
 Brad M. and Jill J. Hutensky
 Lee G. Kuckro
 Marcia Lattimore
 Judy Lewis
 Jia Luo and Michael Monts
 Kenneth and Cynthia Malm
 Marks Family Foundation
 Jill and Martin Mass
 Francoise and Hans Miller
 Joan and Barry Richter
 James M. Salemi and Kenneth J. Bartschi

LEADING DONORS

Gifts of \$1,000+

Michael G. Albano and Nancy B. Alisberg	Angeline and David Hein
Liz Armstrong	Susan Holmes and Bessy Reyna
Ann Azevedo and Donato T. DiGenova	Gordon and Kelly Hui
Thomas O. and Melanie A. Barnes	Douglas and Tita Hyland
Peter and Lisa Block	Sharon and David Jepson
George Bouthet	Evan H. Johnson and Kevin Chick
Claire Burns	Stephanie Johnson
Karen K. Byrne	David and Jan Klein
Ann M. Catino	Dr. and Mrs. Bernard Kosto
Alison and Tony Caxide	Wally and Chris Lamb
Jonathan Clark	Katherine J. Lambert
Tammy Conley and Roselinde Torres	Christopher Larsen
Richard A. and Aida Cyphers	Steve and Sheila Litchfield
Catherine Daly and Roy Dion	Kathleen Lovell
Jack and Alice Ellovich	Guy and Sharon Marhewka
Diane Ellsworth	Leta W. Marks
David W. and Cheryl Epstein	Susan Monks
The Fechter Family Foundation	Richard E. and Paula Musgrave
Jocelyn and Dan Fenyn	Barbie Nadal-Cristofaro and Victor Cristofaro
Muriel and Karl Fleischmann	Beverly O'Halloran
Helen and Henry Frye	Bill and Joy O'Sullivan
William Fuller	Richard Orr and Cynthia Courtney
Peter and Melissa Gambardella	Gerald Pastor and Jane Porterfield
Tom and Cynthia Garten	Robert and Margaret Patricelli
The Gawlicki Family Foundation	Susan Pollard
Ken and Jennifer Geisler	Roberta W. Prescott* and Robert O. Hurwitz*
Catherine Godin	Bob and Patti Pulito
William T. Gough and Jane Cook	Theresa Rebeck
Diana Haghighat and Gerardo Gutierrez	Joan and Allan B. Reiskin
Hartford Lumber Company	Linda L. and Stephen E. Revis
Brian E. Harvey and Sherry A. Manetta	Annemarie H. Riemer

ANNUAL FUND DONORS

LEADING DONORS

Gifts of \$1,000+

Joel and Susan Rottner
Rob Ruggiero
Kenneth and Julie B. Saffir
Pedro Segarra and Charlie Ortiz
The Carol Sirot Foundation
Helen and Nelson Sly
Jeff Snyder
Sally Speer

Robert Stillman and Leslie Fass
Donna M. and Sam Stout
Robert H. Tabshey
Allan B. and Sally S. Taylor
Jeff Rudikoff and Edee Tenser
Christopher White and Patrick
Langevin
Dale Paul Woodiel, Jr.

LOYAL SUPPORTERS

Gifts of \$250+

Accounting Resources, Inc.
Acorn-Alcinda Foundation
Victoria F. and Leonard Albert
P. K. and Phoebe R. Allen
Gregory and Mona Anderson
Anonymous (3)
Joyce and Richard Armstrong
John R. and Angela Arrington
Stephen and Judy August
Edwin L. and Edith G. Baum
Lynn Beaulieu and Gerry Lupacchino
Paul and Joanne Bourdeau
Julianne and Norman Boyd
Whitney Boynton and Kevin Galvin
John Brancato
Joel Brehm and Rodney Dugas
James and Riki Brodey
Julie A. Brogan and Christopher A. Uhrich
Mayor Luke and Sara Bronin
Ellen M. Brown
Boguslaw Buczec
Avery and Eileen Buell
Mary and Ritchard Cable
John Cariani
Ann Clark and David Ehler
Linda F. Cohen
Steven and Elaine Cohen
Dennis Cole
James P. Condren and Ellen J. Robinson
Audrey Conrad
Susan B. Coogan
Cynthia Coppage
Paula K. Corrao
Catherine Costa
Linda and Fred Cote
James and Sheryll-Ann Covill
Evan Cowles and Brie Quinby
Jennifer and Marc A. DiBella
Deirdre and Tom Dillow
Michele and John L. Dolan
Hollis Dorman
Lise Doutre

Beverly and Chris Doyle
Melissa J. Taylor-Doyle and Chris Doyle
Susan and Ned P. Dunn
Ms. Mary-Jane Eisen and Robert K. Yass
Carolyn Emerson
William and Joan Farquhar
David and Peggy Fay
Richard and Georgia Feigel
Stanley and Susan P. Fellman
Christine Fisch
Michael and Evelyn Fishman
Elinor R. and Herbert Flink
Mary-Jane Foster
Jerry and Ida Franklin
Catherine Franks
Timothy A. and Roxane M. Fromson
Rachel Galligan
Carol and Peter Ganick
Robert Garrey
Alice and Gary Gold
Megan and Jay Goldstein
Robert and Lee Goode
Thomas Goodrum and Evelyn Benoit
Pamela and Barry Gordon
Daniel G. Green and Walter Langner
David and Rachel Griffin
Pierre and MaryEllen Guertin
Laura Harris
Frank Haviland and Shirley Mae Neu
Christopher Hayes
Felice Heller and Michael Steinberg
Ronald V. and Patricia Hensley
Hillary Huttenhower
Warren Hollister
Christine Hunihan
Polly Huntington
Bradley and Lisa Hurley
Robert and Karen Isaacs
Donna M. Kidwell
Jennifer and James Kimenker
Myra R. and William Kleinman
Michele and Dane Kostin

LOYAL SUPPORTERS

Gifts of \$250+

Supriya and Vijay Laknidhi	Jennifer and Christian Sager
Susannah Landis	Linda M. Samoncik
William and Deanna Leikin	Martha Sandefer and Frederick Sweitzer
John W. and Joyce R. Lemega	Phyllis Satter
Doreen Linton	William Schaberg
Barbara and Bing Liu	Roberta P. and Philip A. Schmidt
Peggy Lorence	Malcolm and Sally Schneider
David T. and Judith W. Macri	Leon H. and Brenda Seitelman
Gloria Magliozzi	Sandra L. Shaner
Dr. Christopher K. Manning and Chuck Riott	Phyllis and Austin Sheridan
Eileen M. Marks and Ed Mikolowsky	Dana and Chuck Shimkus
Judy and Merrill Marks	Debbie and Jim Shmerling
Jeffrey Amell and Mary S. Martin	Joseph Shortall and Sara Bernstein
Erin McGurk	Shortell Framing
Peggy and Alan Mendelson	Barbara Sicherman
David Miner and Stephanie Robiner	Penny and Steve Sigal
Brian Molinari and Kristan Pierz	Dina Silva
Johanna Morrison	Richard and Raimi Slater
Danielle K. and Jim Naylor	Mark Slitt
Gail Nelson-Holgate	Gilbert and Ruth L. Small
Leigh Newman and Gary Starr	Leslie Smith and Philip Wellman
Kathy and Walter Nicksa	Sharon Smith
Don Noel	Shirley Smith
Emily Noel	Tyler Smith and Lyn Walker
Rod O'Connor	Karen Lee Snyder
Felix Okwaning	Ruth and Howard Sovronsky
Joseph Pace	Catherine J. Spera
Alan and Jennifer Panecasio	Felix J. and Helene L. Springer
Alan and Michele Parker	Beatrise Srams
Sara and Tim Parker	Glenn Stanisewski
Richard and Robin Pearson	Larry Starr
MaryJane Perrier	Barbara and Leon Stechenberg
Arlene and Robert Person	Stacey Stone
Randi and Steve Piaker	James G. and Marcia E. Sutton
Leslie Pilder	Thomas and Donna Swarr
Raphael Podolsky and Jill Mehler	Ellen D. and John B. Thomas
Leslie Pollack	Roberto Tollis and Peter Chester
Frances Porter	Humphrey Tonkin and Jane Edwards
Laura Post and Mark Pazniokas	Ruth Treat
Sandra and George Pruce	Maria Tsitsirides
Marion and Seth Radeen	Douglas and Mildred Unfried
Naomi H. Rafalowicz	Hope W. Vath
Jo-Anne Rankin and John Williams	Miranda Haeseler-Volpe and John Volpe
Patricia and Edgar Reed	Arthur Edward Webster
Margaret and Charles Rich	Robert and Penelope Whalen
Christina and Ezra Ripple	Mara A. Whitman and Marc Edrich
Frank Rizzo	Gretchen H. Wiedie
Jo Ann Roberts	Karen and Philip Will
Nancy and Stephen Roberts	Lawrence and Deena Williams
Michele Rosenberg	Arnold and Myrna Wyse
Barbara Rubin	Peter M. and Ellen T. Zeman
Sandra H. and Marshall Rulnick	Elliot Zweig and Doreen Fundiller-Zweig
Mary Beth Russell	*deceased
William Goba and Joan Russoniello-Goba	

THE ROB RUGGIERO INNOVATION FUND

Michael G. Albano and Nancy B. Alisberg
P. K. and Phoebe R. Allen
R. Kingsbury and Barbara Chase
Mr. Peter Arakas and Ms. Karen Kellerman
Virginia Argenio
James E. and Karen Bachman
Ivan A. Backer and Paula Fisher
Lynn Beaulieu and Gerry Lupacchino
Martha and Bob Belliveau
John and Laura Berman
Vanita Bhalla
John W. Bialobrzkeski and Janet Rooney
Geraldine L. and Vern A. Biederman
Anne and Bruce Bowman
Patti Broad
Chester and Glenna Brodnicki
James Bruno and William Gratz
Ken Byer and Anthony Michalak
Patricia Carrigan
Polly Champ
Ted Chapin
Martin and Lorry Clayman
Patrick and Elena Coffey
Catherine Conlin
Susan B. Coogan
Evan Cowles and Brie Quinby
Keith R. Cudworth and Jane Coughlin*
Marisa Dal Ponte
Marjorie and Ronald Debold
Ms. Nancy M. Depalma
Jennifer and Marc A. DiBella
Sharon F. and George Dickerman
Marian Dziama and Karen Cormier
Susan Fay
Art Feltman and Dale James Wallington
Muriel and Karl Fleischmann
Joan Fox
Arthur Franklin
Jerry and Ida Franklin
Catherine Franks
Helen and Henry Frye
Michael Fuss
Barbara Gallo
Carol and Peter Ganick

Ken and Jennifer Geisler
Kathleen Gilrain
Robert and Francine Goldfarb
Felice Goldman
Firooz and Maria Golkar
William T. Gough and Jane Cook
Eileen Griffin
Lillian G. Harter
Ronald V. and Patricia Hensley
Warren Hollister
Beverly J. and Richard L. Hughes III
Polly Huntington
Susan Huntington
Sandra Jacobus
Valerie and Mathew Jasinski
Evan H. Johnson and Kevin Chick
James J. Keller and Candice M. Chirgotis
Judith and Richard T. Keppelman
Kitchen and Bath Design Construction
Dr. Alan and Lydia Klatsky
David and Jan Klein
Linda Koflanovich
Michele and Dane Kostin
Darwin W. and Susan Kovacs
Lee G. Kuckro
Nancy and Jerry Lahman
Supriya and Vijay Laknidhi
Annette Landry
Christopher Larsen
Marcia Lattimore
John W. and Joyce R. Lemega
Sherwood and Gwendolyn Lewis
Peggy Lorence
Betsy MacDermid
Diane Mack and Robin Gilmartin
Glen MacLeod
David T. and Judith W. Macri
Gloria Magliozzi
Lenore Mand
Judith C. and David L. McChesney
Joy McConnell
Kenton McCoy



Thomas and Marjorie Michalski
Donald N. and Regina M. Miller
Rachel Miller
Marjorie E. Morrissey
Richard E. and Paula Musgrave
Barbie Nadal-Cristofaro and Victor
Cristofaro
Wilbur J. and Amy Sevell Nelson
Kathy and Walter Nicksa
Jo Nol
Julia Powell O'Brien and James O'Brien
Dottie O'Meara
Nancy Pacht
Linda Parent
Marlene Passman
Saul and Joanne Pasternack
Gerald Pastor and Jane Porterfield
Carole Anne Pepe
Kristen M. Phillips and Matthew Schreck
Dina Plapler and Earl McMahon
Rochelle Pleet
Leslie Pollack
Roberta W. Prescott* and Robert O.
Hurwitz*
Susan Rathgeber
Martey S. Rhine
Margaret and Charles Rich
Margaret Rick
Judith Rifkin
Christina and Ezra Ripple
Robert Rodner
Sari and Jim Rosokoff
Marjorie Ross
Barbara Rubin
Linda Ryan
Jennifer and Christian Sager
Larry Samplatsky and John Tackus
Phyllis and Austin Sheridan
Dina Silva
Mary Silverberg and Joseph Kolczynksi

The Carol Sirot Foundation
Jen and Kenneth Siskind
Gilbert and Ruth L. Small
Leslie Smith and Philip Wellman
Kevin and Marcia Smith
Larry Starr
Kate Steven
Dot and George Stone
Donna M. and Sam Stout
Mervyn Strauss
Robert H. Tabshey
Eleanor D. Tener
Ruth G. Timme Family Foundation
Mary Lee Morrison
Hope W. Vath
Theresa Waltz
Linda Webber
Judith and Joel Weisman
Peter M. and Ellen T. Zeman
*deceased

ITALIAN GOLD
a feast for the eyes



*scan
to shop*



LUX BOND & GREEN
JEWELERS *celebrating* 125 YEARS

46 LASALLE ROAD WEST HARTFORD 860.521.3015
140 GLASTONBURY BLVD GLASTONBURY 860.659.8510

MOHEGAN SUN WESTPORT WELLESLEY BOSTON CONCIERGE

EVERY BOX HAS A STORY™

SHOP ONLINE AT LBGREEN.COM OR CALL US AT 800.524.7336