



THE RIVER

Jez Butterworth

October 4 - November 11

theaterworks

from the director

I have wanted to direct THE RIVER since I saw it on Broadway with Hugh Jackman a few years ago. I was mesmerized by the story — the enticing ambiguity of the play lingered with me far past my experience in the theater. “When we find each other, are we trying to recapture someone we once lost?” It’s a provocative question I felt compelled to explore.

THE RIVER is a refreshing take on yearning. I love the poetry and humanity of this work. And I am intrigued by the desire to recapture something that has vanished... the struggle with the “emotional ghosts” of life.

I am no fisherman, but the visceral nature of baiting and hooking, catching and releasing — the push and pull within the act was enthralling on the stage, and in the beauty of Jez’s written words.

Love is an ephemeral thing. Once in your hands, it can quickly slip out of reach. The longing for that time is both beautiful and incessant. To share that kind of intimacy with you, in our space, is just the way I want to start this next season. In the intimate darkness of THE RIVER, in our perfect gem of a space, we launch into something new, reminiscing on things past and reaching for things soon to come.

Rob Ruggiero

*‘At the still point of the turning world. Neither flesh nor fleshless;
Neither from nor towards; at the still point, there the dance is,
But neither arrest nor movement. And do not call it fixity,
Where past and future are gathered. Neither movement from
nor towards,
Neither ascent nor decline. Except for the point, the still point,
There would be no dance, and there is only the dance.’*

T.S. Eliot, ‘Burnt Norton’, Four Quartets

THE RIVER

by Jez Butterworth

directed by Rob Ruggiero†

THE CAST

(in order of appearance)

The Woman	ANDREA GOSS*
The Man	BILLY CARTER*
The Other Woman	JASMINE BATCHELOR*

A cabin on the cliffs, above the river.

Set Design	BRIAN PRATHER
Costume Design	TRICIA BARSAMIAN
Lighting Design	JOHN LASITER
Sound Design	FREDERICK KENNEDY
Casting	McCORKLE CASTING
Associate Director	TANEISHA DUGGAN
Production Manager	BRIDGET SULLIVAN
Stage Manager	KATE J. CUDWORTH*
Dialect Coach	JOHANNA MORRISON

Cover Design by **WondriskaRusso**
Photo by **Mike Marques**

The River was first produced by the Royal Court Theatre, London, in the Jerwood Theatre Upstairs from October 18 to November 17, 2012.

Original Broadway production produced by Sonia Friedman Productions, Stuart Thompson, Scott Rudin, Roger Berlind, Colin Callender, Scott Landis, Tulchin Bartner Productions.

† Associate Member of SDC, Stage Directors and Choreographers Society.

* Member of Actors’ Equity Association, Union of Professional Actors and Stage Managers in the U.S.

#DontLookAway

#The River

#TheaterWorks



@theaterworksct

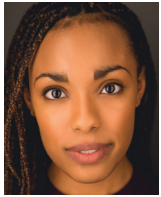
theaterworkshartford

@theaterworksct

TheaterWorks is celebrating its 33rd season as a non-profit, professional theater company. Founded in 1985.

THE RIVER
is the 1st production of the 2018-2019 Season.

TheaterWorks • 233 Pearl Street • Hartford, CT 06103 • 2018



JASMINE BATCHELOR (The Other Woman) is thrilled to be making her **TheaterWorks** debut. Recent credits include *A Raisin in the Sun* (Two River Theater), the World Premiere of Toni Morrison's *JAZZ* (Baltimore Center Stage), *REDWOOD* (MTC Reading Series), *Ain't No Mo'* (NYTW Reading Series), *Hop Tha A* (Ars Nova Out Loud), *A Midsummer's Night's Dream*, *Julius Caesar*, and *Timon of Athens* (Shakespeare Theatre of NJ). Film/TV credits include *New Amsterdam* (NBC), *The Good Fight* (CBS), *The Affair* (Showtime), and *Miss 2059* (Go90 / New Form Digital). Education: The Juilliard School.



BILLY CARTER (The Man) is making his **TheaterWorks** debut. He recently appeared in the U.S premiere of Martin McDonagh's latest play *Hangmen* at Atlantic Theater Company. Broadway: *A Moon for the Misbegotten*. Off-Broadway: Ian in *Shining City* opposite Matthew Broderick, *The Weir*, *Port Authority*, *39 Steps*, Samuel Beckett's

All That Fall opposite Michael Gambon and as Thomas Stockmann in *An Enemy of the People* (Guthrie). Billy has worked extensively in London and throughout the UK and Ireland at the following: Royal Shakespeare Company, Royal National Theater, Royal Court, Almedia, Lyric Hammersmith and Abbey Theater, Dublin. London, West-End: *Birdsong* dir. Trevor Nunn, *The Malcontent*, *Island Princess*, *Eastward Ho!* and *The Roman Actor* (RSC), *Macbeth*, *I Can't Sing!* opposite Cynthia Erivo at The London Palladium. TV: Best known for Thomas Andrews in *Titanic: Blood and Steel* opposite Derek Jacobi (Starz/Amazon) Other: *Luke Cage*, *Turn*, *Sons of Liberty*, and as series regular for various BBC. Film: *Festival* (Pathe) *Up On The Roof* (Film 4)



ANDREA GOSS (The Woman) is making her **TheaterWorks** debut. Broadway: *Indecent*, *Cabaret*, *Once*, *Rent*. National Tours: *Cabaret* (Sally Bowles) Regional: *Jane Eyre* revised world premiere (Cleveland Musical Theatre), *A Civil War Christmas* (Baltimore Center Stage), *Once* (Engeman), *Striking 12* (TUTS/Queensbury Theatre), *Zorro* (Alliance),

A Christmas Carol (McCarter), *Venice* (Center Theatre Group/Kansas City Rep), *Tarzan* (North Shore), *High School Musical* (St. Louis MUNY), *The Sound of Music* and *Big River* (Syracuse Stage). NYC Readings/Workshops - *Beau*, *K-Pop*, *Zapata*, *August Rush*, *Freckleface Strawberry*, *Casanova Returns*. Film: *Rent: Filmed Live on Broadway*. Thanks and love to my family and CGF.

JEZ BUTTERWORTH (Playwright) Stage plays include *Mojo* (1995); *The Night Heron* (2002), a gangster drama set around a club in 1950s Soho, *Winterling* (2006), *Parlour Song* (2009) and the multi award-winning comedy, *Jerusalem* (2009), starring Mark Rylance as Johnny Byron. In 2009, *Jerusalem* was named second in The Times Top Twenty Plays of the Decade, and opened on Broadway, New York in 2011. He also adapted the plays *Mojo* in 1997 and *Huge* in 1993 for

the screen. Other screenplays are *Night of the Golden Brain* and *Christmas*, in 1993 and 1996 respectively, both written with his brother Tom Butterworth. He wrote the screenplay for *Birthday Girl*, 2001, starring Nicole Kidman, and *The Last Legion* in 2007. His screenplay *Fair Game*, was written with his brother John Henry Butterworth, telling the story of Valerie Plume, the CIA spy. He co-wrote *Spectre*, the latest James Bond film, released in 2015. He is also an actor and director.



ROB RUGGIERO (Director / Producing Artistic Director) has been part of **TheaterWorks** artistic leadership for 25 years. He has directed over 50 shows, including *The Legend of Georgia McBride*, *Constellations*, *Next to Normal*, *Relativity*, *Sex with Strangers*, *Christmas on the Rocks*, *The Other Place* and *Time Stands Still*. His Broadway credits include *Looped* (starring Valerie Harper in a Tony-nominated performance) and *High* (starring Kathleen Turner). Off-Broadway, he conceived and directed the musical revue *Make Me a Song: The Music of William Finn* (Nominated for Drama Desk and Outer Critics Circle Awards). Rob conceived and directed *Ella*, a musical portrait of Ella Fitzgerald, which has been seen at 24 regional theaters and on National Tour. His work has received multiple awards in Connecticut and around the United States. In his eleventh collaboration with Goodspeed Musicals, Rob directed *Oliver*. He also directed highly successful productions of *Rags*, *La Cage aux Folles*, *Fiddler on the Roof* (Connecticut Critic's Circle Award for Best Direction), *The Most Happy Fella* (Connecticut Critic's Circle Award for Best Direction), *Carousel* (Broadway World Award), *Annie Get Your Gun*, *Camelot*, *Big River* and *1776*. His adaptation of *Show Boat* is now being licensed by the Rogers & Hammerstein Organization. www.robruggiero.com

BRIAN PRATHER (Set Design) is excited to return to **TheaterWorks** after previously designing *Relativity*. Other past TheaterWorks credits include *Sex With Strangers*, *Playing the Assassin*, *Dancing Lessons*, *Shakespeare's R&J*, *The Exonerated*, among others. Recent Off-Broadway: *Heartbreak House* (GTG), *Daniel's Husband* (Primary Stages), *Widowers' Houses* (TACT/Gingold), *A Christmas Carol* (St. Clement's), *Becoming Dr. Ruth* (Westside), *Freud's Last Session* (New World Stages), and *The Burnt Part Boys* (Playwrights Horizons). International: Chung-mu Art Hall (South Korea). Regional: Alley Theatre, Goodspeed Musicals, Barrington Stage Co., Shakespeare Theatre of New Jersey, Capitol Rep., among many others. Joseph Jefferson Award (Chicago) winner, Emmy nomination (New England) for "The Kate" concert series on CT Public Television, Associate Artist at Barrington Stage Co. and member of USA Local 829. See Brian's work at brianprather.com.

TRICIA BARSAMIAN (Costume Design) **TheaterWorks**: *Next to Normal*. NY: *KPOP* (Lucille Lortel nomination), *Sweetee*, *Paradiso*, *Empire Travel Agency 1.0*, *Does it Hurt When I Do This?* (Woodshed Collective), *Yank! A WWII Love Story*, *Sistas: The Musical*. Regional: The Alley Theatre,

who

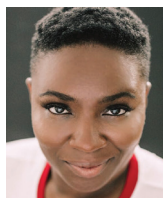
Barrington Stage Company, Hartford Stage, Virginia Stage Company, John W. Engeman Theater, Resident Ensemble Players. Select associate/asst costume design: *Mean Girls*, *Madonna Rebel Heart Tour*, *American Psycho*, *Something Rotten!*, *The Queen of the Night* (The Diamond Horseshoe), *Annie*, *Hands on a Hardbody*, *Taylor Swift Speak Now Tour*, *Sondheim on Sondheim*. Tricia holds an MFA from NYU and a BFA in design from North Carolina School of the Arts.

JOHN LASITER (Lighting Design) **THE RIVER** marks John's 45th show at **TheaterWorks** and his 24th year of association with the theater. Broadway: *High* starring Kathleen Turner. Regional: Actors Theatre of Louisville, Arena Stage, Arizona Repertory Theatre, Asolo Repertory Theatre, Center Stage, Cincinnati Playhouse, Cleveland Play House, Dallas Theater Center, Florida Stage, George Street Playhouse, Geva Theatre, Goodspeed Musicals, The Guthrie Theater, Hartford Stage Company, Long Wharf Theater, Milwaukee Repertory Theater, The MUNY in St. Louis, New Mexico Repertory Theatre, Pioneer Theater Company, Paper Mill Playhouse, Pittsburgh Public Theater, South Coast Repertory, Syracuse Stage, Virginia Stage Company and Repertory Theatre of St. Louis. Off-Broadway: Alarm Dog Repertory Company, Blue Light Theater Company. www.johnlasiter.com

FREDERICK KENNEDY (Music and Sound Design) is pleased to be making his **TheaterWorks** debut. He has worked for more than a decade as a sound designer, percussionist, and music producer and has appeared on dozens of recordings; toured throughout North America and Europe, as well as to parts of South America, the Caribbean, and the South Pacific; and taught numerous classes in improvisation, composition, and sound design for multimedia as a guest artist at universities around the United States. As a designer, he has produced work for theater, video, commercials, and dance. Recent work includes *Flyin' West* (Westport Country Playhouse), *Father Comes Home from the Wars, Parts 1, 2, and 3* (American Conservatory Theater/Yale Repertory Theatre), and *Native Son* (Yale Repertory Theatre), which received a Connecticut Critics Circle nomination for best sound design. He holds a MFA in Sound Design from Yale School of Drama and a Bachelor of Music in Jazz Studies from the University of North Texas. Frederick was the 2018 recipient of the Burry Fredrik Design Fellowship. www.fredkennedy.org

MCCORKLE CASTING, LTD (Casting) Pat McCorkle C.S.A., (Katja Zarolinski) Broadway: *Amazing Grace*, *End of the Rainbow*, *The Lieutenant Of Inishmore*, *The Glass Menagerie*, *Cat On A Hot Tin Roof*, *One Flew Over The Cuckoo's Nest*, *Amadeus*, *She Loves Me*, *Blood Brothers*, *A Few Good Men*, etc. Off-Broadway: *Stalking the Bogeyman*, *Becoming Dr. Ruth*, *Lady Day*, *Tribes*, *Our Town*, *Falling*, *Toxic Avenger*, *Freud's Last Session*, *Almost, Maine*, *Driving Miss Daisy*. Feature film: *Girl in the Lake*, *Premium Rush*, *Ghost Town*, *Secret Window*, *Basic*, *Tony and Tina's Wedding*, *The Thomas Crown Affair*, *The 13th Warrior*, *Madeline*, *Die Hard with a Vengeance*, *School Ties*, etc. Television: *St. George* (George Lopez Show) *Twisted* (ABC Family), humans for *Sesame Street*, *Californication* (Emmy nomination), *Hack*

(CBS), *Chappelle's Show* (Comedy Central), *Barbershop*, *Remember WENN* (AMC). mccorklecasting.com



TANEISHA DUGGAN (Associate Director) **TheaterWorks**: *Race* (actor), *Constellations*, *The Wolves* (Assistant Director) NYC: *Lesbian Love Octagon* (The Kraine), *Get to Nomi* (LaMama), *Flipside* (Fringe Festival NYC HERE Arts Center), *Women of Roswell* (American Globe Theater), *Hamlet* (Purchase Repertory Theater). Regional: *Riding the Turnpike* (HartBeat Ensemble), *Tigertigertiger* (Long Wharf Theater), *A Raisin in the Sun* (Hartford Stage Company), *Cat on a Hot Tin Roof* (Hartford Stage Company). Education: Purchase College, State University of New York. Taneisha joined the TheaterWorks team in 2015, where she is charged with literary management, new work planning, artistic liaison, community engagement, and audience development.

BRIDGET SULLIVAN (Production Manager) joined the TheaterWorks team in 2016. Her experience includes production and project management, as well as many years in the world of props. Head of production for the Weston Playhouse Theatre Company in Vermont for 7 years, Bridget's past work also includes managing celebrity concerts at North Shore Music Theatre and being Project Manager for Barbizon Lighting Company. Other credits include City Theatre Company in Pittsburgh and the Santa Fe Opera. She's looking forward to this renovation season after working through renovations at Weston and NSMT. Go Team TW!

KATE J. CUDWORTH (Production Stage Manager) has enjoyed six seasons with **TheaterWorks** including *Hand to God*, *The Invisible Hand*, *The Legend of Georgia McBride*, *The Wolves*, *Fade*, *Next to Normal*, *Sunset Baby*, *Relativity*, *Midsummer*, *Woody Sez* and *Becoming Dr. Ruth*. Off-Broadway: *Freud's Last Session*, [title of show]. NY/Regional: Barrington Stage Company (8 seasons including *Freud's Last Session*; *Dr. Ruth*, *All The Way*; *Joe Iconis' The Black Suits*), Atlantic Stage Company, Hartford Stage, Manhattan School of Music (4 seasons), Yale Opera, York Theatre Company, Bronx Opera Company, Fringe NYC, NYMF



Come see us before and after the show

100 Trumbull St
salutehartford.com
860.899.1350

The Renovation Season

Building the Dream

Later this season, our building will be undergoing some major changes. These improvements will have a huge impact on your experience and on our guest artists, but they will not alter that personal, intimate experience we value so deeply. It's an exciting time.

Starting with the recently announced musical *GIRLFRIEND*, by Todd Almond and Matthew Sweet, we'll be moving our productions out of our home here at 233 Pearl Street to make way for these considerable improvements.

It was important to us that we stay close and maintain our downtown presence. After an extensive search that had us looking at innovative new spaces and seeking out partnerships with neighbors new and old, we're returning to the place we began—TheaterWorks at the Wadsworth. We are thrilled to partner with Tom Loughman and the staff of the Wadsworth while we are under construction. It will be fun to wrap up this season with old friends.

As you can imagine, this renovation comes with great expense. It will be transformative, and we will need the support of patrons like you to see it through. In the next few weeks you'll be able to learn more about our plans and the ways you can help at twreno.org. We hope you're as excited as we are about what's coming and we look forward to making the journey together.

learn more and play a part in
building the dream

twreno.org

Renovation Fund Lead Donors

(these generous friends led the charge)

Michael and Nancy Albano
Anonymous (1)
Duff Ashmead
Jennifer and Marc DiBella
Ann Clark and David Ehler
Jack and Alice Ellovich
Grace Figueredo and Ken Gostyla
The Gawlicki Family Foundation
Susan Guralnik
Jeffrey and Nancy Hoffman
Evan Johnson and Kevin Chick
Lee Kuckro
Ted and Adlyn Loewenthal
Gerry Lupacchino and
Lynn Beaulieu
Marjorie E. Morrissey
The William and Alice Mortensen
Foundation
Daniel and Lori O'Connell

Dina Plapler and Earl McMahon
Roberta W. Prescott and Robert
O. Hurwitz
Bob and Patti Pulito
Dennis Russo
Larry Samplatsky and John
Tackus
Sherry and Jonathan Schreiber
Maryanne Shin
Darlene and Guy Simonian
Carol L. Sirot Foundation
SLAM Collaborative
Tara Spain
State of Connecticut Department
of Economic and Community
Development
Montell and Anjanette Taylor
Travelers
David and Theresa Waltz



theaterworks

2018 — 2019 Season

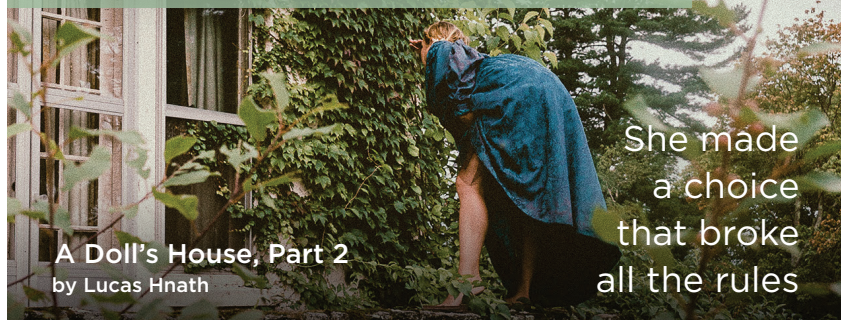
performed at theaterworks nov 27 - dec 23



Christmas On The Rocks
Hartford's holiday tradition returns!

Another round
on the rocks!

performed at theaterworks jan 17 - feb 24



A Doll's House, Part 2
by Lucas Hnath

She made
a choice
that broke
all the rules

performed at the Wadsworth march 21 - april 20



Girlfriend
by Todd Almond & Matthew Sweet

The line between
friendship and love
is complicated.

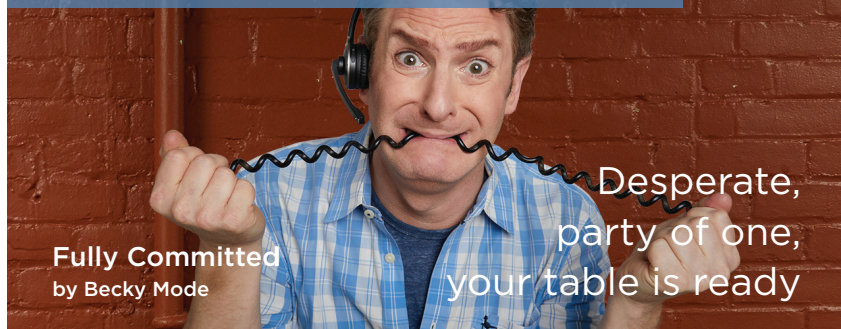
performed at the Wadsworth may 23 - june 23



Actually
by Anna Ziegler

Who decides
what is true?

performed at the Wadsworth aug 1 - sept 1



Fully Committed
by Becky Mode

Desperate,
party of one,
your table is ready

Join us!



Post-show Happy Hour
Drink and food specials before the show
860.244.9463 for reservations

Only the best at bin

thebin228.com



THE RIVER crew

properties master
Erin Sagnelli

charge artist
Jessica Ploszaj

scenic artist
Mikayla Carr

costume stitcher
Collette C. Benoit

production intern
Clare Coursey

hartford arts
jobs grant interns
Sincere Lawson
Dynasti Johnson

carpenters
Melia Boudreau
Alexandra Lenihan
Nicole Rivera
Megan Velasquez

electricians
Chris Labik

foh interns
Maya Cuevas
Jacob Greene
Sophie Smekens
Rachel Sparks
Nathan Thomas
Dana Tortora
Madison Vice

TheaterWorks 2018-2019 Season
Where you want to be.
twhartford.org

MAKING THINGS HAPPEN



The Maximilian E. & Marion O. Hoffman Foundation
Richard P. Garmany Fund

Ensworth Charitable Foundation, Bank of America, N.A., Trustee
The George A. & Grace L. Long Foundation, Bank of America, Co-Trustee
William and Alice Mortensen Foundation

The Saunders Foundation
TD Bank
People's United Bank

TRANSFORM YOUR LOOK FROM SLEEK TO CHIC

Unique hair designs,
products, and services to
compliment your style!

Indigo

HAIR INNOVATIONS

VIRGIN
HUMAN HAIR
DISTRIBUTOR

641 NEW PARK AVENUE
WEST HARTFORD, CT 06110
860-990-1565

Schedule your appointment today!

www.indigohairinnovations.com

staff

Producing Artistic Director
Rob Ruggiero

Producing Associate
Taneisha Duggan

Director of Marketing/
Communications
Freddie McInerney

Director of Development
Dina Silva

Audience Administration
Joshua Demers

Business Associate/Devo/
Audience Services
Diana Sparks

Technical Director
Zachry Pilat

Stage Manager
Kate J. Cudworth

Assistant Stage Manager/
Company Manager/
Wardrobe
Cecelia Chapman

Production Photographer
Lanny Nagler

General Manager
Nicole LaFlair Nieves

Artistic Associate
Eric Ort

Marketing Associate
Michael McKiernan

Operations Manager
William Farquhar

Production Manager
Bridget Sullivan

House Managers/
Audience Services
Sam Boushee
Will Prenetta

Assistant Technical Director
Sasha Wahl

Audio-Visual Supervisor
Adam Bintz

Master Electrician
Chris Bell

Cafe Operator
Megan Velasquez

twhartford.org

board

Gerry Lupacchino (President)
Dina Plapler (Vice President)
Daniel O'Connell (Treasurer)
Evan Johnson (Secretary)
Jack Ellovich (Asst Secretary)
Michael G. Albano
Stacy Brusa
Jennifer DiBella

Grace Figueredo
Lee G. Kuckro
Roberta Prescott
Robert Pulito
Dennis Russo
Larry Samplatsky
Tara Spain
Montell Taylor

THERE ARE MANY WAYS TO SHOW YOUR SUPPORT

Gifts of Cash
Recurring Gifts
Matching Gifts
Gifts of Securities
Planned Gifts

CONTACT DINA

dina@theaterworkshartford.org 860.986.7457

thanks

Bailey McKiernan, bin228, Christopher G. Bell, Dan Feig, Faye Armon-Troncosco, Goodspeed Musicals, Greater Hartford YMCA, Hartford Stage, Jane Coughlin, Keith Cudworth, Long Wharf Theatre, Oran Mills, Paola-Whole Foods, Peter Marlowe Forestry, Peter Nielsen, Salute, Vicky & Jim Linville

annual fund donors

PLATINUM PARTNERS

Gifts of \$25,000+

Jeffrey and Nancy Hoffman
David Holmgren
LAZ Parking
Bob Pulito and SLAM Collaborative
Dr. Anne Rothstein and Jane Hellman
Dennis Russo and WondriskaRusso
Theresa and David Waltz

GOLD PARTNERS

Gifts of \$10,000+

Lynn Beaulieu and Gerry Lupacchino
Cheryl Chase and Stuart Bear Family Foundation
Common Sense Fund
Helen and Henry Frye
Robert and Francine Goldfarb
John and Kelly Hartman Foundation
Ted and Adlyn Loewenthal
Thomas W. and Emily B. Nissley
Larry Samplatsky and John Tackus

SILVER PARTNERS

Gifts of \$5,000+

Duff Ashmead
Mark Boelhouwer
Grace Figueredo and Ken Gostyla
Warren Hollister
Joy and Tom McConnell
The Katharine K. McLane and Henry R. McLane Charitable Trust
Francoise and Hans Miller
Richard E. and Paula Musgrave
Lanny Nagler and Lanny Nagler Photography
Belle Ribicoff
Alicia Roncari and Bin 228
Jonathan and Sherry Schreiber
Carol L. Sirot Foundation
The Zachs Family Foundation

BRONZE PARTNERS

Gifts of \$2,500+

Ted and Kathy Fleming
Lee G. Kuckro
Dr. Christopher K. Manning and Chuck Riott
Daniel and Lori O'Connell
Dina Plapler and Earl McMahon
Linda L. and Stephen E. Revis
Rob Ruggiero
Kevin and Marcia Smith
Michael Wilder

LEADING DONORS

Gifts of \$1,000+

Michael G. Albano and Nancy B. Alisberg
Anonymous (3)
Dorothy T. Arnold

annual fund donors

LEADING DONORS

Gifts of \$1,000+

continued

Barnes Group Foundation
Cynthia Bates and Jonathan Russell
Peter and Lisa Block
Trudi and Lew Brown
Amy Charney and Lewis K. Wise
Sue Ann Collins
Kurtis L. Denison
Jack and Alice Ellovich
The Fechter Family Foundation
Muriel and Karl Fleischmann
Catherine Franks
William Fuller and Sally Williams
The Gawlicki Family Foundation
Irving I. Gilman Family Foundation
John Gouveia
Peter Grzybala and Diane Korntheuer
Hartford Flavor Company
Brad M. and Jill J. Hutensky
Douglas and Tita Hyland
Evan H. Johnson and Kevin Chick
Theodore Kaplan and Roberta F. Woronow

Wally and Chris Lamb
Janet M. and Christopher Larsen
Judy Lewis
Barri R. Marks and Woody Exley
Sheila Marks
Julia McCormack
Marjorie E. Morrissey
Janet U. Murphy
Dr. Stacy Nerenstone and Morton Weinstein
Julie and David Peck
Roberta W. Prescott and Robert O. Hurwitz
Robert F. and Patti Pulito
Alvin B. Reiner
Joan and Allan B. Reiskin
Elaine Sayadoff
Kenneth and Julie B. Saffir
Helen and Nelson Sly
Tara Spain
Donna M. and Sam Stout
Robert H. Tabshey
Tapper Charitable Foundation
Dan and Janet Tracy

LOYAL SUPPORTERS

Gifts of \$250+

Acorn-Alcinda Foundation
Victoria F. and Leonard Albert
Margery and Norman Andrews
Anonymous (2)
Kathleen and Thomas Archambault
John R. and Angela Arrington
Ann Azevedo and Donato T. DiGenova
Pierre and Kate Barbour
Thomas O. and Melanie A. Barnes
Anthony and Beverley Bellisio
Catherine and Bruce Bernstein
Jon D. and Cheryl Bertus
James and Joan Betts
Ross and Joyce Bray
Julie A. Brogan and Christopher A. Uhrich
Luke and Sara Bronin
Ellen M. Brown
James Bruno and William Gratz
Avery and Eileen Buell
John and Karen K. Byrne
Diane Cadrain and Joseph Rubin
Arianna and Lori Calabrese
Lynn F. and Jack Cavo
Blair Childs
Bernard Chowaniec, Jr.
Margaret and William J. Cibes, Jr.
Ann Clark and David Ehler
James N. and Amy Jane Cohen
James P. Condren and Ellen J. Robinson
Connecticut Lighting Centers
Donna R. and Arthur R. Cote
Joseph Cotier
Cynthia Courtney and Richard Orr
James and Sheryll-Ann Covill
Mally and Jim Cox-Chapman

Arline Croce
Richard A. and Aida Cyphers
Marc and Karyn d'Avignon
Jennifer and Marc A. DiBella
Etienne M. and Caroline D'otreppe
Catherine Daly and Roy Dion
Kerry L. Dietz and Eva Schocken
Michele and John L. Dolan
Hollis Dorman
Melissa J. Taylor-Doyle and Chris Doyle
Michelle and John Drain
Susan and Ned P. Dunn
Dr. Barbara Edelstein
Diane Ellsworth
David W. Epstein
Ellen Erway
Alycia B. Evica
Tracy Flater and Tony Falcetti
William and Joan Farquhar
Stanley and Susan P. Fellman
Susan Fierberg and Howard Scheinblum
Daniel and Joan S. Fine
David S. and Linda Fishman
Timothy A. and Roxane M. Fromson
Rachel Galligan
Carol and Peter Ganick
Ken and Jennifer Geisler
Mary and Gary Gello
Edmond Genest
Ceil Gersten
Catherine Godin
Bob Gordon
Lynne G. and Bob Gordon
William T. Gough and Mary J. Cook
Daniel G. Green and Walter Langner
John A. and Norma Green

LOYAL SUPPORTERS

Gifts of \$250+

continued

David and Rachel Griffin
Tim Grogan and Bill Anderson
Pierre and MaryEllen Guertin
Diana Haghghat and Gerardo Gutierrez
Brian E. Harvey and Sherry A. Manetta
Karen and Patrick Hatcher
Frank Haviland and Shirley Mae Neu
Ronald V. and Patricia Hensley
Debbie Hersh
Jo Ann Hewett and George Burger
Donna Lynn and Jay Hilton
Donald and Helene Hirschfeld
Dr. Nancy Humphreys
Christine Hunihan
Polly Huntington
Joan Hurwitz
Sharon and David Jepson
David and HB Kaplan
Harriet R. and I. William Katz
Alan and Carolyn Kaufman
Lynn J. and Eric P. Kaufman
James J. Keller and Candice M. Chirgotis
Kitchen and Bath Design Construction
Myra R. and William Kleinman
William Knight and Jill Adams
Dr. and Mrs. Bernard Kosto
Abbey and Stephen Kreinik
David J. and Ruth Krugman
Kenneth L. LaMonda, Jr.
Susannah Landis
Carol and Hank Landry
Ann and Bill Lazarek
Barbara L. Lederer
Randolph M. Lee
William and Deanna Leikin
Michael S. and Carolyn W. Levine
Karen Licht
Doreen Linton
Jennifer Lotstein
Marie and Bill MacLean
Joyce and Bill Magee
Kenneth and Cynthia Malm
Adam Man
William and Anita Mancoll
Eileen M. Marks and Ed Mikolowsky
Judy and Scott Mather
Fran Mayer and David Weill
Erin McGurk
Debbie McInerney
Freddie and Denny McInerney
Louis M. and Marjorie B. Mendelson
Lewis Mero
George Miller
Dan Millett
Sal Modifica
Susan Monks
Michael Monts
Polly Moon
Johanna Morrison
Bruce Mortimer and Sarah Kuerbitz
Dr. Theodore F. and Carole Mucha
Danielle K. and Jim Naylor
Jennifer Noble
Don and Brad Noel

Bill and Joy O'Sullivan
Charles H. Owens
Alan and Michele Parker
Jeffrey and Joo Eng Partridge
Gerald Pastor
Matthew K. Poland
Frances Porter
Marion and Seth Radeen
Jo-Anne Rankin and John Williams
Stephen L. and Nancy Roberts
Deborah Roncari
Robin Roncari
Barbara J. and Alan Rosenberg
Michele Rosenberg
Richard and Elizabeth Rumohr
Edward Russo and Len Comeau
William and Joan Russoniello-Goba
Jennifer and Christian Sager
James M. Salemi and Kenneth J. Bartschi
Donald Salzberg and Susan Perl
Linda M. Samoncik
Martha Sandefer and Frederick Sweitzer
Carolyn and Frank Sataline
John J. and Suzanne D. Schloss
Sharon and Lynn Scull
Brenda and Lee Seitelman
Judith and Gerard Selzer
Candance J. and William Shanahan
Robert Shepler
Phyllis and Austin Sheridan
Joseph Shortall and Sara Bernstein
Christopher Shyer and David S. Ehrich III
Steven and Susan Sigal
Dina Silva
Amy Lynn Silverman
Douglas and Roberta Simpson
Richard and Raimi Slater
Gilbert and Ruth L. Small
Phyllis and Howard Small
Mary A. and William H. Smyers
Stan and Muriel Sokolow
Karin A. Stahl
William Stapleton
Sondra Astor Stave
Charles Stebbins
Barbara and Leon Stechenberg
Robert Stillman and Leslie Fass
Thomas and Donna Swarr
Jerry Tarre
John and Barbara Taussig
Allan B. and Sally S. Taylor
Montell and Anjanette Taylor
Fred and Ruth Timme
Humphrey Tonkin and Jane Edwards
Douglas and Mildred Unfried
James R. and Kay K. Wade
Reeves Westmoreland
Robert and Penelope Whalen
Gretchen H. Wiedie
Arnold and Myrna Wyse
Peter M. and Ellen T. Zeman
Liz and Richard Zlatkus
Alexander P. and Bella Zubkov

Donors in Blue: 10+ years continuous annual support

Every Box Has a Story



Quality • Value • Selection



LUX BOND & GREEN

JEWELERS SINCE 1898

46 LASALLE ROAD WEST HARTFORD 860.521.3015
140 GLASTONBURY BLVD GLASTONBURY 860.659.8510
MOHEGAN SUN WESTPORT BOSTON WELLESLEY

LBGreen.com

EVERY BOX



HAS A STORY™

800.524.7336