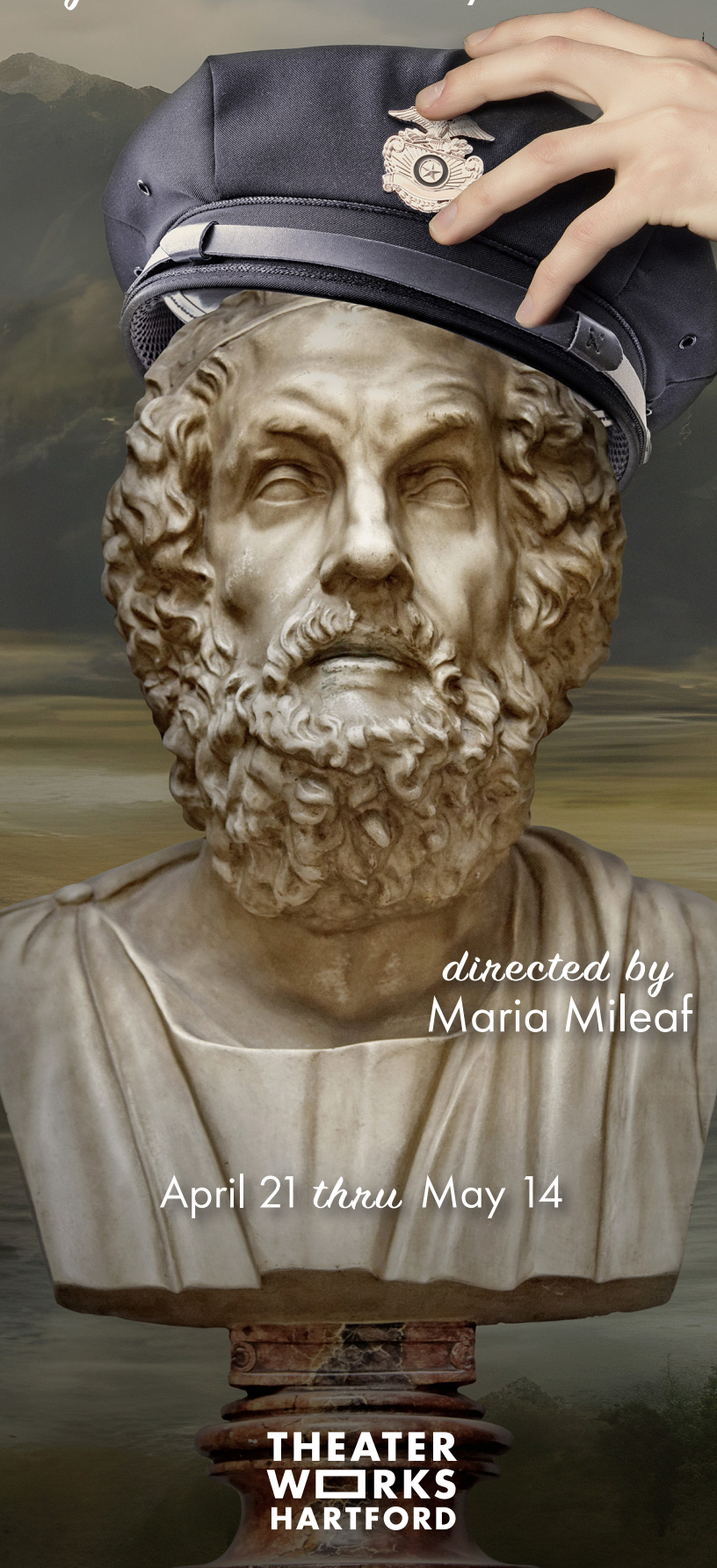


The Rembrandt

by Jessica Dickey



directed by
Maria Mileaf

April 21 *thru* May 14

**THEATER
WORKS
HARTFORD**



From the Director

At its core, I'm looking at this play through the lens of an art maker. A theater maker. And so the idea that one can be provoked and inspired and compelled by a work of art in a meaningful, challenging and life-affirming way speaks to me.

As many of us have been, I have been considering what a major disruption can do to one's life. During Covid, there were many difficult and even unbelievably and heartbreakingly fatal hurdles but there was also the opportunity to reconsider choices and actions, family dynamics, levels of generosity or reactivity. Who do I love? What is my generative offer to the world? How am I living? Who or what pushes us outside of our comfort zone? What will last?

THE REMBRANDT speaks to these things for me. In a funny, romantic, human story about survival, relationships and art.

So whether your life is disrupted by a pandemic, a terminal illness or a major rule-defying transgression, there is the opportunity to find new, enduring and joyful paths forward. THE REMBRANDT's characters are all seeking or avoiding something. They are forced to discern what their journey is going to be and they are, by interacting with art and each other, given the chance to make purposeful choices.

– *Maria Mileaf*

We Celebrate and Thank Our Partners

Lead Producing Partner

THE HOFFMAN FAMILY

Producing Partner

**CHERYL CHASE AND STUART BEAR
FAMILY FOUNDATION**

Supporting Partners

LIBERTY BANK

**SUZANNE HOPGOOD
in memory of FRANK LORD**

Programming Partner



**WADSWORTH ATHENEUM
MUSEUM OF ART**

twhartford.org

#TheRembrandt



#theaterworkshartford

#twh



#twhartford



The Rembrandt

by JESSICA DICKEY

directed by MARIA MILEAF †

THE CAST

(in order of appearance)

Henry/Rembrandt	MICHAEL CHENEVERT*
Jonny/Martin	BRANDON ESPINOZA*
Madeline/Henny	AMBER REAUCHEAN WILLIAMS*
Dodger/Titus	EPHRAIM BIRNEY*
Homer/Simon	BILL BUELL*

Set Design	NEIL PATEL
Costume Design	KATHERINE ROTH
Lighting Design	MATTHEW RICHARDS
Sound Design/Composer	BART FASBENDER
Projection Design	ADAM BINTZ
Casting Director	tbd casting co/ STEPHANIE YANKWITT, CSA
Stage Manager	TOM KOSIS*

Time and Place

- Part 1 White – today, United States
Part 2 Red – 1653, Amsterdam
Part 3 Ochre – roughly 800 BC, Greece
Part 4 Black – today, United States

THE REMBRANDT was commissioned and originally produced by
Ford's Theatre. Paul R. Tetreault, Director

THE REMBRANDT is presented by arrangement with Concord Theatricals on behalf of
Samuel French, Inc. www.concordtheatricals.com

† Member of SDC, Stage Directors and Choreographers Society.

* Appearing through an agreement between this theater and Actors' Equity Association,
the Union of Professional Actors and Stage Managers in the United States

TheaterWorks Hartford is celebrating its 37th season as a non-profit,
professional theater company. Founded in 1985.

THE REMBRANDT is the 3rd show of the 2022-2023 Season.
TheaterWorks Hartford • 233 Pearl Street • Hartford, CT 06103 • 2023

WHO



EPHRAIM BIRNEY (Dodger/Titus) is so excited to be back at **TheaterWorks Hartford**. Ephraim made his digital TheaterWorks debut in Adam Rapp's *The Sound Inside*, playing the role of Christopher. Outside of Hartford, Ephraim recently appeared as Chester in The Irish Repertory Theater's production of Joseph Dougherty's *Chester Bailey*, directed by Ron

Lagomarsino. The Wall Street Journal called it one of the top ten productions of 2022. Ephraim has been a part of *Chester Bailey* on two other occasions, once at The Contemporary American Theater Festival in 2019 and again at Barrington Stage Company in 2021. In the world of film, Ephraim was featured in the 2021 Sundance Pick *Strawberry Mansion* and can be seen in TV shows such as *Gotham* and *The Americans*. He's really hoping he can pull off a mohawk.



BILL BUELL (Homer/Simon) is making his **TheaterWorks Hartford** debut. He has appeared on Broadway in *Ink*, *Cyrano*, *Equus*, *The History Boys*, *Inherit the Wind*, *Urinetown*, *42nd Street*, *Titanic*, *The Who's Tommy*, *Taking Steps*, *Big River*, *Annie*, *Once a Catholic*, *The First*, *Welcome to the Club*, *The Miser*, and *Anna Karenina*. His Off-Broadway credits

include *Waste*, *Bad Habits*, *Queens Boulevard*, *Rancho Viejo*, *Kin*, *On the Bum*, *Picasso at the Lapine Agile*, *The Common Pursuit*, and *Tumacho*. With The Public's Shakespeare in the Park: *Tartuffe*, *The Winter's Tale*, and *Twelfth Night*. Film and television include *7 Seconds*, *Sneaky Pete*, *God's Pocket*, *Across the Universe*, *Spy Game*, *Welcome to the Dollhouse*, *The Love Letter*, *Requiem for a Dream*, *Quiz Show*, *Palindromes*, *Kinsey*, *Dark Water*, *Boardwalk Empire*, *30 Rock*, *Blue Bloods*, *The Bronx Is Burning*, *John Adams*, *Curb Your Enthusiasm*, *The Jamie Kennedy Experience*, and *Law & Order*.



MICHAEL CHENEVERT (Henry/Rembrandt) is thrilled to be working at **TheaterWorks Hartford**. Regional Theater credits include: Bay Street Theater, Westport Country Playhouse, Arkansas Repertory, Repertory Theatre of St. Louis, Cincinnati Playhouse in the Park, and Crossroads Theater. TV credits: *The Equalizer*, *Terror Lake Drive*, *New Amsterdam*,

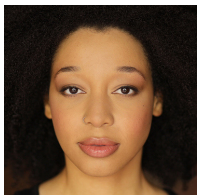
Godfather of Harlem, *Ugly Betty*, *Boardwalk Empire*, *The Following*, *Law & Order SVU*. Film credits: *Syrup*, *The Tombs*, and *Interference*. Michael has a BFA from University of Detroit Mercy. He has also studied at The LIR Academy at Trinity College in Ireland, the Barrow Group and at Susan Batson Studio. Michael has written and performed a one-man show, called *An Adam Experiment*.



BRANDON ESPINOZA (Jonny/Martin) is making his **TheaterWorks Hartford** debut. Broadway: *Spongebob SquarePants*, *Tuck Everlasting*, *Gypsy*, *Big*, *Les Miserables*, *The Will Rogers Follies*. Off-Broadway: *The Visitor* (Public Theater), *Substitution* (Playwrights Realm), *Scarcity* (Atlantic Theater Company), *Tea and Sympathy* (Keen Company),

Captains Courageous (Manhattan Theatre Club; Drama League Honoree/Nominee). Regional: *Anna In The Tropics* (Director/Playwright: Nilo Cruz; Miami New Drama; 20th anniversary production), *On Your Feet!* (Papermill Playhouse), *The Way Of The World* (Director/Playwright: Theresa Rebeck; Folger Shakespeare Theater), *A View From The Bridge* (Director: Ivo van Hove; Goodman Theater). Current TV: Detective Garcia on *Raising Kanan* (Starz). Other TV: *The Blacklist* (NBC), *Law & Order: Organized Crime*

(NBC), *The Equalizer* (CBS), *FBI* (CBS), *The Leftovers* (HBO), *The Following* (FOX), *The Mysteries of Laura* (NBC), *The Carrie Diaries* (CW).



AMBER REAUCHEAN WILLIAMS (Madeline/Henny) is making her TheaterWorks Hartford debut. She is incredibly humbled to be a part of this exceptionally talented company. Recent theater credits include *Candida* at Theatre Row NYC, the critically acclaimed production of *Stick Fly* at the Repertory Theatre of St. Louis, and NYT Critic's Pick *Behind the Sheet* at Ensemble Studio Theatre. As a voiceover artist, Amber has lent her voice to national commercial campaigns, video games, animation, audiobooks and currently hosts the #1 Black romance podcast in the world, Wondery's *True Love*, now in its 6th season. She received her BFA from Boston University's School of Theatre. She would like to thank her friends and family for their love and unwavering support. amberreauche.com @lovehernaturally



JESSICA DICKEY (Playwright) is an award-winning playwright whose writing was hailed by New York Times as having "freshness, economy, cheeky vulgarity, with a fine measure of poetic insight," and the New Yorker magazine as "funny, smart, deep and sad." Her play *The Convent* premiered in 2019 Off-Broadway in a sold-out co-production with Rattlestick Playwrights Theater, Rising Phoenix, and WeatherVane. *The Rembrandt* had a sold-out run at Steppenwolf starring John Mahoney in 2017. Other plays including *The Amish Project*, *Charles Ives Take Me Home*, and *Row After Row* have premiered Off-Broadway and have been produced around the country. *Nan and the Lower Body*, a dark comedy about the creation of the Pap Smear premiered last summer on the West Coast. In television, Jessie writes for Apple TV's comedy *Physical*, starring Rose Byrne. As an actor Jessica has been seen on *Homeland*, at the Humana Festival in Molly Smith Metzler's play *Cry It Out* and in Sam Hunter's premiere *Pocatelto* at Playwrights Horizons. Other notable appearances include performances at Manhattan Theater Club, Rattlestick Playwrights Theater, Cherry Lane, the Guthrie, McCarter, the Huntington, Denver Center, among others. Selected television credits include *Shades of Blue*, *The Big C*, *Law & Order*, and the Lifetime movie *Amish Grace*. Jessie is a recipient of the prestigious Stavis Playwright Award.



MARIA MILEAF (Director) is thrilled to make her TheaterWorks Hartford debut! Favorite directing credits include Lee Blessings' *Body of Water* at Primary Stages, Vijay Tendulkar's *Sakharam Binder* and Maria Milisavljevic's *Abyss* for the Play Company, Neena Beber's *Hard Feelings* for WP Theatre/New Georges, Oren Safdie's *Gratitude* at Urban Stages, Courtney Baron's *Here I Lie*, and Alan Zweibel's *Playing God* (with Bill Buell) for Summer Shorts @ 59E59, Alexandra Gersten-Vasillaros' *The Argument* at The Vineyard, Sharon Washington's *Feeding the Dragon* at Hartford Stage, Joanna Murray-Smith's *Ninety* at New York Stage and Film, Nash's *The Rainmaker* at The Old Globe, Lisa D'Amour's *Detroit* and Lynne Nottage's *Ruined* at the Philadelphia Theatre Company where Mileaf won a Barrymore Award for Outstanding Direction of Tracey Scott Wilson's *The Story*, Lucy Prebble's *Sugar Syndrome*, John Belluso's *A Nervous Smile* and Noel Coward's *Blithe Spirit* at the Williamstown Theatre Festival, Wendy Wasserstein's *Third* at The Geffen, and Kwame Kwei-Armah's *Let There Be Love* at ACT in San Francisco. On the West End, Maria directed Glen Berger's *Underneath the Lintel*.

WHO



NEIL PATEL (Set Design) Current projects include *The Great Indian Musical: Civilization to Nation* for the NMACC in Mumbai, *King Shaka* for CBS/Showtime and *Theater of the Mind* for Todomundo and the Denver Center for Performing Arts created by David Byrne and Mala Goankar. Notable past television and film projects include *Dickinson* for

AppleTV+ (Peabody Award), *Pretty Little Liars: Original Sin* for HBOMAX, *Some Velvet Morning* for TriBeca Films, *In Treatment* for HBO (Peabody Award) and *Little Boxes* for Netflix. Neil's award-winning designs have been seen on Broadway, the West End, and world-wide, and include recent productions of *Mughal E Azam* in Mumbai, New Dehli, Kuala Lumpur and Singapore, *Father Comes Home From The Wars (Parts 1, 2, & 3)* at the Royal Court in London and *Time and the Conways* on Broadway.



KATHERINE ROTH (Costume Design) Broadway: *Come Fly Away*. NY/Regional: Alliance Theatre, Encore Theatre at Wynn Las Vegas, People's Light, Signature Theatre, Williamstown Theatre Festival, Vineyard, TFANA, Cherry Lane, Women's Project, Primary Stages, INTAR, Bat Theatre Company, Rattlestick Playwrights Theater, The Old Globe (San

Diego Theatre Critics Circle Award), California Shakespeare Theater (San Francisco Bay Area Theatre Critics Circle Award), Dallas Theater Center (Leon Rabin Award), many more. Film/Television: Two Daytime Emmy Awards for Costume Design for *All My Children*.



MATTHEW RICHARDS (Lighting Design) TheaterWorks Hartford: *American Son*, *Hand to God*, *The Invisible Hand*, *Shakespeare's R&J*, *American Buffalo*, *Souvenir*, *Speech and Debate*, *The Seafarer*, *Driving Miss Daisy*, *Doubt*, *Woman Before a Glass*. Broadway: *Ann* starring Holland Taylor. Opera: *Macbeth* at L.A. Opera. Off-Broadway: *Is*

God Is at Soho Rep; *The Absolute Brightness of Leonard Pelkey* and *The Curvy Widow* at Westside Arts; *The Killer*, *Tamburlaine*, and *Measure For Measure* at Theatre For a New Audience. Regional: Actor's Theater of Louisville, Arena Stage, Baltimore Center Stage, Cincinnati Playhouse, Cleveland Play House, Dallas Theater Center, Ford's Theatre, The Goodman, Hartford Stage, The Huntington, La Jolla Playhouse, Long Wharf, The Old Globe, Shakespeare Theatre, Westport Playhouse, Williamstown Theatre Festival, Yale Repertory Theatre.

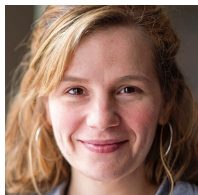


BART FASBENDER (Sound Design/Composer) TheaterWorks Hartford: *Speech and Debate*, *The Seafarer*. Broadway: *Bloody Bloody Andrew Jackson*. Off Broadway: *The Confessions of Lily Dare* (Primary Stages), *Soft Power* (as Sound Effects Designer – The Public Theater), *The Other Josh Cohen* (Westside Theater), *Harry Clark* (Audible at Minetta Lane /

Vineyard Theater), *Who's Holiday* (Westside Theater). Regional: Old Globe, KC Rep, Guthrie Theater, Idaho Shakespeare, Lake Tahoe Theater, Great Lakes Theater, Cincinnati Playhouse in the Park, Bucks County Playhouse, Rep Theater of St. Louis, Geva Theater, ACT, Center Theater Group, Philadelphia Theater Co. Proud member USA829 and Theatrical Sound Designers and Composers Association.



ADAM BINTZ (Projection Design) is a Hartford-area artist in his fifth season as Audio Visual Supervisor at **TheaterWorks Hartford**. Recent video work includes the gallery installation for *Queen of Basel* and cast interviews. Adam has worked around the country at various regional theaters and venues including Portland Center Stage, Long Wharf Theatre, Bristol Valley Theater, and Walt Disney World. Sound Design credits include: *Elton Undressed*, *Every Brilliant Thing* (TheaterWorks Hartford) *BELIEVE*, *Masks and the Monster* (The Other Voice) *Count, Sense & Sensibility*, *Dot*, *A Christmas Carol*, *Leaving Eden* (PlayMakers Repertory Company), *Romeo & Juliet*, *The Tempest* (Hall High School), *She Kills Monsters* (Hartford Academy of the Arts) Front of House Mix Credits: *Fun Home*, *Girlfriend* (Theaterworks Hartford) *Fun Home* (Weston Playhouse Theater Company) *My Paris*, *Murder For Two*, *The Lion* (Long Wharf Theatre) adambintz.com



STEPHANIE YANKWITT / tbd casting co (Casting Director | she/her) Upcoming: *Clyde's* (TheaterWorks Hartford), *The Whitney Album* (Soho Rep), *SUMO* and *Babbitt* (La Jolla Playhouse). Currently/Recent: Soho Rep's *Wolf Play* (MCC Theater), *Crumbs From The Table of Joy* (Keen Company), *Smart* (EST), *The Coast Starlight* (LCT), *Here There Are Blueberries* (Tectonic/STC), *Hang Time* (The Flea Theater). Resident Casting Director: Soho Rep & Tectonic Theater Project. Regular collaborators also include Long Wharf Theatre, Primary Stages, The Sol Project, NAATCO, and La Jolla Playhouse. Two films currently in development: one with Lexicon Films/Exile Content Studio, one with Plotnaut Pictures. Member: CSA, Equity in Entertainment Committee.



ROB RUGGIERO (Producing Artistic Director) has been part of **TheaterWorks Hartford** artistic leadership for 30 seasons. He has directed over 65 shows, including TWH productions of *Fun Home*, *The Sound Inside*, *American Son*, *The Legend of Georgia McBride*, *Constellations*, *Next to Normal*, *Relativity* (starring Richard Dreyfuss) and *Christmas on the Rocks*,

which he also conceived. His Broadway credits include *Looped* (starring Valerie Harper in a Tony-nominated performance) and *High* (starring Kathleen Turner) which had its world premiere at TWH. He also conceived and directed the musical revue *Make Me a Song: The Music of William Finn* which moved off-Broadway and was nominated for Drama Desk and Outer Critics Circle Awards. Rob conceived and directed *Ella*, a musical about Ella Fitzgerald, which saw sold-out runs in 24 regional theaters and was produced as a National Tour. His work on plays and musicals has received multiple awards in Connecticut and around the United States. Rob recently directed *A Grand Night for Singing* at Goodspeed Musicals where over his 14-year relationship he has directed many award-winning musical productions. Internationally he directed *Fiddler on the Roof* in Athens, Greece.

MIKE LENAGHAN (Director of Production) is so happy to come back to **TheaterWorks Hartford** this season after spending the past 8 years as the Production and Design teacher at Kinsella Magnet School for Performing Arts. From 2004-2014 Mike was TheaterWorks' Technical Director then Production Manager and occasionally Props Master. Regional credits: Goodspeed Musicals, Juilliard School Production Department, Downtown

WHO

Cabaret Theater and Westport Playhouse. Broadway credits include *Thoroughly Modern Millie*, *Our Town* and *Fortune's Fool*. Off-Broadway: *The It Girl*, *Suburb* and *The Summer of '42*.

TOM KOSIS (Production Stage Manager) recently stage managed TheaterWorks Hartford productions of *Secondo* and *Christmas on the Rocks*. Tom's Broadway credits include *Mary Poppins*, *Side Show*, *The Scarlet Pimpernel*, *Flower Drum Song*, *Bye Bye Birdie*, *A Chorus Line*, *My Fair Lady*, *Grand Hotel* and *Nice Work If You Can Get It*. His National and International Tour credits include *Irving Berlin's White Christmas*, *A Chorus Line*, *Song & Dance*, *West Side Story* and *Dreamgirls*. From 2015 to Spring 2023, Tom was the AEA Production Stage Manager for UConn's Connecticut Repertory Theatre where he also supervised their stage management students. tomkosis.com

ACTORS' EQUITY ASSOCIATION ("Equity"), founded in 1913, is the U.S. labor union that represents more than 51,000 professional Actors and Stage Managers. Equity fosters the art of live theater as an essential component of society and advances the careers of its members by negotiating wages, improving working conditions and providing a wide range of benefits, including health and pension plans. Actors' Equity is a member of the AFL-CIO and is affiliated with FIA, an international organization of performing arts unions. #EquityWorks

THE REMBRANDT CREW

Light Board Operator
Bryan McManamy

Deck Crew
Maddie McAuliffe
Llyn Thomas

Scenic Artists
Joseph DePalmer
Sandy McRae
Erin Sagnelli

Wardrobe Crew
Vic Basilao

Sound/Projections
Anna Brewster

Load In Crew
Johann Fitzpatrick
Gem Mercado
Zach Pilat

Load In Crew
Lillian McDonald
Jade Mellitz
Rebecca Ristow
Ian Williams



AN OASIS OF CLASSICAL AND CLASSIC MUSIC

WMNR.ORG

88.1FM 91.5FM 90.1FM

TERRENO BAR PIÑA

GOOD TIMES ARE RIGHT AROUND THE CORNER

DINNER BEFORE THE SHOW /
DRINKS AFTER THE SHOW

PRIX FIXE + FULL MENU AVAILABLE

3 COURSES

\$35 / PERSON

SERVED 5-9PM



SERVING IN BAR PIÑA AND TERRENO

LOCATED ONE BLOCK FROM THE THEATER IN THE
GOODWIN HOTEL

1 HAYNES ST. 860.904.2101

PINAHARTFORD.COM

Coming Next

CLYDE'S
by Lynn Nottage



July 7 - 30

THANKS

THANKS FOR MAKING THINGS HAPPEN



Hartford
Foundation
FOR PUBLIC GIVING



BANK OF AMERICA



GREATER HARTFORD
ARTS COUNCIL

J. WALTON BISSELL
FOUNDATION

TRAVELERS 

The Edward C. & Ann T.
Roberts
FOUNDATION

 Lincoln
Financial Foundation



HSB
A Munich Re company



Raytheon
Technologies

cThumanities



Bank

America's Most Convenient Bank®

Connecticut
still revolutionary

THE SHUBERT
FOUNDATION INC.

The Burry Fredrik Foundation

Cheryl Chase and Stuart Bear Family Foundation

Ensworth Charitable Foundation, Bank of America, N.A., Trustee

John and Kelly Hartman Foundation

The George A. & Grace L. Long Foundation, Bank of America, Co-Trustee

The Saunders Foundation

William and Alice Mortensen Foundation

Richard P. Garmany Fund at the Hartford Foundation for Public Giving

The Elizabeth M. Landon and Harriette M. Landon Charitable Trust

The Katherine K. McLane and Henry R. McLane Charitable Trust

Liberty Bank

The
Goodwin
Hartford's boutique hotel

The Goodwin is the official hotel of TheaterWorks Hartford.

SEASON PARTNERS

TYLER ANDERSON / TERRENO & BAR PIÑA

SALUTE

LAZ

DUNKIN' PARK

THANKS TO E. JOHN MCGARVEY
AND LES CHEVEUX SALON

THANKS

Chris Bell, Margaret Carbonneau, Distinctive Finishes LLC, DNR Laboratories,
R.J. Kinsella Magnet School of Performing Arts, Camilla Tassi

TWH STAFF

Producing Artistic Director
Rob Ruggiero

Producing Associate
Kate J. Cudworth

Director of Production
Mike Lenaghan

Company Manager/
Costume Supervisor
Cecelia Chapman

Resident Designer/
Design Coordinator
Brian Prather

Audio-Visual Supervisor
Adam Bintz

Technical Director
Sasha Wahl

Master Carpenter
David Weaver

Assistant Stage Manager/
Wardrobe
Julius Cruz

AOCA Fellow/Social Media
Joël Cintron

IT Consultant
Dean Batchelder

Director of Development
Dina Silva

Development and Community
Engagement Associate
Erica Tracy Sullivan

General Manager
Nicole LaFlair Nieves

Business Associate
Yaasmeen Cook

Operations Manager
Bill Farquhar

Director of Audience
Administration
Joshua Demers

House Manager
Sam Bousheé

Audience Services
Alexis Gardner
Will Prenetta

Director of Marketing/
Communications
Freddie McInerney

Marketing Associate
David Samuel

COVID SAFETY TEAM

Cecelia Chapman
Joshua Demers
Bill Farquhar

BOARD

Dina Plapler (President)

Kristen Phillips (Vice President)

Larry Samplatsky (Treasurer)

Grace Figueredo (Secretary)

Jennifer DiBella (Asst Secretary)

Michael G. Albano

Stacy Brusa

Fernando Ferro

Christopher R. Hayes

Gordon Hui

Stephanie A. Johnson

Lee G. Kuckro

Supriya S. Laknidhi

Françoise A. Miller

Felix Okwaning

Robert Pulito

Marcia Smith

Christopher White

ANNUAL FUND DONORS

PLATINUM PARTNERS

Gifts of \$25,000+

Cheryl Chase and Stuart Bear Family Foundation
The Hoffman Family
David Holmgren
LAZ Parking
Marjorie E. Morrissey
Thomas W. and Emily B. Nissley
The Estate of June M. Rosenblatt
Dennis Russo and WondriskaRusso
Ruth G. Timme Family Foundation
Theresa Waltz

GOLD PARTNERS

Gifts of \$10,000+

Common Sense Fund
ETCH
Robert and Francine Goldfarb
Ted and Adlyn Loewenthal

SILVER PARTNERS

Gifts of \$5,000+

Anonymous
Matthew and Patricia Berky
Grace Figueredo and Ken Gostyla
Ted and Kathy Fleming
Suzanne M. Hopgood
William Knight and Jill Adams
The Elizabeth M. Landon and Harriette M. Landon Charitable Foundation
Joy McConnell
The Katharine K. McLane and Henry R. McLane Charitable Trust
Eric D. Ort and Duff Ashmead
Kristen M. Phillips and Matthew Schreck
Dina Plapler and Earl McMahon
Dr. Anne Rothstein and Jane Hellman
Larry Samplatsky and John Tackus
Elizabeth Schiro and Stephen Bayer
Jonathan and Sherry Schreiber
Kevin and Marcia Smith
The Zachs Family Foundation
Joseph Zimmer

BRONZE PARTNERS

Gifts of \$2,500+

Acorn-Alcinda Foundation
Staci Bachman
Ivan A. Backer and Paula Fisher
Andrew Benator
Jacqueline Berkowitz
Stacy Brusa
Helen and Henry Frye
The Gawlicki Family Foundation

BRONZE PARTNERS (continued)

Gifts of \$2,500+

Peter Grzybala and Diane Korntheuer
 Brad M. and Jill J. Hutensky
 Lee G. Kuckro
 Marcia Lattimore
 Judy Lewis
 Jia Luo and Michael Monts
 Jill and Martin Mass
 Joan and Barry Richter
 Pedro Segarra and Charlie Ortiz
 James M. Salemi and Kenneth J. Bartschi
 Elizabeth Vandeventer and Edward Cumming

LEADING DONORS

Gifts of \$1,000+

Doug and Sheryl Adkins	Dr. and Mrs. Bernard Kosto
Michael G. Albano and Nancy B. Alisberg	Wally and Chris Lamb
Anonymous	Katherine J. Lambert
Liz Armstrong	Christopher Larsen
Thomas O. and Melanie A. Barnes	Steve and Sheila Litchfield
Peter and Lisa Block	Kathleen Lovell
James Bruno and William Gratz	Kenneth and Cynthia Malm
Claire Burns	Guy and Sharon Marhewka
Karen K. Byrne	Leta W. Marks
Ann M. Catino	Sheila Marks
Alison and Tony Caxide	Francoise and Hans Miller
Amy Charney and Lewis K. Wise	Susan Monks
Jonathan Clark	Richard E. and Paula Musgrave
Tammy Conley and Roselinde Torres	Beverly O'Halloran
Richard A. and Aida Cyphers	Bill and Joy O'Sullivan
Catherine Daly and Roy Dion	Richard Orr and Cynthia Courtney
Jack and Alice Ellovich	Gerald Pastor and Jane Porterfield
Diane Ellsworth	Robert and Margaret Patricelli
David W. and Cheryl Epstein	Roberta W. Prescott* and Robert O. Hurwitz*
The Fechter Family Foundation	Bob and Patti Pulito
Jocelyn and Dan Fenyn	Theresa Rebeck
Muriel and Karl Fleischmann	Joan and Allan B. Reiskin
William Fuller	Linda L. and Stephen E. Revis
Tom and Cynthia Garten	Annemarie H. Riemer
Catherine Godin	Joel and Susan Rottner
William T. Gough and Jane Cook	Kenneth and Julie B. Saffir
Floyd W. Green, III	The Carol Sirot Foundation
Diana Haghighat and Gerardo Gutierrez	Helen and Nelson Sly
Brian E. Harvey and Sherry A. Manetta	Jeff Snyder
Angeline and David Hein	Sally Speer
Gordon and Kelly Hui	Robert Stillman and Leslie Fass
Douglas and Tita Hyland	Donna M. and Sam Stout
Sharon and David Jepson	Allan B. and Sally S. Taylor
Evan H. Johnson and Kevin Chick	Jeff Rudikoff and Edee Tenser
Stephanie Johnson	Dale Woodiel, Sr. and Linda Rountree
David and Jan Klein	Dale Paul Woodiel, Jr.

ANNUAL FUND DONORS

LOYAL SUPPORTERS

Gifts of \$250+

Accounting Resources, Inc.	Elizabeth Gagne
Victoria F. and Leonard Albert	Rachel Galligan
P. K. and Phoebe R. Allen	Carol and Peter Ganick
Gregory and Mona Anderson	Robert Garrey
Anonymous (3)	Ken and Jennifer Geisler
Joyce and Richard Armstrong	Alice and Gary Gold
Stephen and Judy August	Megan and Jay Goldstein
Ann Azevedo and Donato T. DiGenova	Robert and Lee Goode
Edwin L. and Edith G. Baum	Thomas Goodrum and Evelyn Benoit
Lynn Beaulieu and Gerry Lupacchino	Pamela and Barry Gordon
Anthony and Beverley Bellisio	Daniel G. Green and Walter Langner
Paul and Joanne Bourdeau	David and Rachel Griffin
George Bouthet	Pierre and MaryEllen Guertin
Julianne and Norman Boyd	Laura Harris
Whitney Boynton and Kevin Galvin	Frank Haviland and Shirley Mae Neu
John Brancato	Christopher Hayes
James and Riki Brodey	Joan Hedrick
Julie A. Brogan and Christopher A. Uhrich	Felice Heller and Michael Steinberg
Mayor Luke and Sara Bronin	Ronald V. and Patricia Hensley
Ellen M. Brown	Hillary Huttenhower
Boguslaw Buczek	Danny Holgate and Gail Nelson
Avery and Eileen Buell	Warren Hollister
Mary and Ritchard Cable	Susan Holmes and Bessy Reyna
John Cariani	Jacqueline Hubbard and Norman Needleman
Ann Clark and David Ehler	Christine Hunihan
Linda F. Cohen	Polly Huntington
Steven and Elaine Cohen	Bradley and Lisa Hurley
Dennis Cole	Robert and Karen Isaacs
Communication Strategies	David Jimenez
James P. Condren and Ellen J. Robinson	Donna M. Kidwell
Audrey Conrad	Jennifer and James Kimenker
Susan B. Coogan	Kitchen and Bath Design Construction
Cynthia Coppage	Myra R. and William Kleinman
Paula K. Corrao	Michele and Dane Kostin
Catherine Costa	David J. and Ruth Krugman
Linda and Fred Cote	Supriya and Vijay Laknidhi
James and Sheryll-Ann Covill	Susannah Landis
Evan Cowles and Brie Quinby	William and Deanna Leikin
Mally and Jim Cox-Chapman	John W. and Joyce R. Lemega
Jennifer and Marc A. DiBella	Doreen Linton
Michele and John L. Dolan	Barbara and Bing Liu
Hollis Dorman	Peggy Lorence
Beverly and Chris Doyle	David T. and Judith W. Macri
Melissa J. Taylor-Doyle and Chris Doyle	Gloria Magliozzi
Susan and Ned P. Dunn	Dr. Christopher K. Manning and Chuck Riott
Dr. Barbara Edelstein	Eileen M. Marks and Ed Mikolowsky
Ms. Mary-Jane Eisen and Robert K. Yass	Judy and Merrill Marks
William and Joan Farquhar	Erin McGurk
David and Peggy Fay	Peggy and Alan Mendelson
Richard and Georgia Feigel	David Miner and Stephanie Robiner
Stanley and Susan P. Fellman	Brian Molinari and Kristan Pierz
Christine Fisch	Johanna Morrison
Michael and Evelyn Fishman	Danielle K. and Jim Naylor
Elinor R. and Herbert Flink	Leigh Newman and Gary Starr
Mary-Jane Foster	Kathy and Walter Nicksa
Catherine Franks	
Timothy A. and Roxane M. Fromson	

LOYAL SUPPORTERS

Gifts of \$250+

Don Noel	Sharon W. and Robert H. Smith
Emily Noel	Shirley Smith
Rod O'Connor	Tyler Smith and Lyn Walker
Felix Okwaning	Karen Lee Snyder
Joseph Pace	Patricia B. Snyder
Alan and Jennifer Paneccasio	Emily and Norman Sondheimer
Alan and Michele Parker	Ruth and Howard Sovronsky
Sara and Tim Parker	Catherine J. Spera
Richard and Robin Pearson	Felix J. and Helene L. Springer
MaryJane Perrier	Beatrise Srams
Adam E. and Alison S. Perrin	Glenn Stanisewski
Arlene and Robert Person	Larry Starr
Randi and Steve Piaker	Barbara and Leon Stechenberg
Leslie Pilder	Cynthia B. and Alan L. and Adam Stern
Raphael Podolsky and Jill Mehler	Stacey Stone
Leslie Pollack	James G. and Marcia E. Sutton
Susan Pollard	Thomas and Donna Swarr
Frances Porter	Robert H. Tabshey
Laura Post and Mark Pazniokas	Ellen D. and John B. Thomas
Sandra and George Pruce	Roberto Tollis and Peter Chester
Marion and Seth Radeen	Humphrey Tonkin and Jane Edwards
Naomi H. Rafalowicz	Dan and Janet Tracy
Jo-Anne Rankin and John Williams	Ruth Treat
Patricia and Edgar Reed	Maria Tsitsirides
Margaret and Charles Rich	Douglas and Mildred Unfried
Christina and Ezra Ripple	Hope W. Vath
Frank Rizzo	Miranda Haeseler-Volpe and John Volpe
Jo Ann Roberts	Laura and Matthew Wallace
Nancy and Stephen Roberts	Arthur Edward Webster
Michele Rosenberg	Robert and Penelope Whalen
Barbara Rubin	Christopher White and Patrick Langevin
Rob Ruggiero	Mara A. Whitman and Marc Edrich
Sandra H. and Marshall Rulnick	Gretchen H. Wiedie
Mary Beth Russell	Karen and Philip Will
William Goba and Joan Russoniello-Goba	Lawrence and Deena Williams
Jennifer and Christian Sager	Arnold and Myrna Wyse
Linda M. Samoncik	Peter M. and Ellen T. Zeman
Martha Sandefer and Frederick Sweitzer	Alexander P. and Bella Zubkov
Phyllis Satter	Elliot Zweig and Doreen
William Schaberg	Fundiller-Zweig
Roberta P. and Philip A. Schmidt	* deceased
Malcolm and Sally Schneider	
Leon H. and Brenda Seitelman	
Sandra L. Shaner	
Dana and Chuck Shimkus	
Debbie and Jim Shmerling	
Joseph Shortall and Sara Bernstein	
Shortell Framing	
Barbara Sicherman	
Penny and Steve Sigal	
Dina Silva	
Darlene C. and Guy A. Simonian	
Jen and Kenneth Siskind	
Richard and Raimi Slater	
Mark Slitt	
Gilbert and Ruth L. Small	
Leslie Smith and Philip Wellman	

THE ROB RUGGIERO INNOVATION FUND

Michael G. Albano and Nancy B. Alisberg
P. K. and Phoebe R. Allen
R. Kingsbury and Barbara Chase
Mr. Peter Arakas and Ms. Karen Kellerman
Virginia Argenio
James E. and Karen Bachman
Ivan A. Backer and Paula Fisher
Lynn Beaulieu and Gerry Lupacchino
Martha and Bob Belliveau
John and Laura Berman
Vanita Bhalla
John W. Bialobrzski and Janet Rooney
Geraldine L. and Vern A. Biederman
Patti Broad
Chester and Glenna Brodnicki
James Bruno and William Gratz
Ken Byer and Anthony Michalak
Patricia Carrigan
Polly Champ
Martin and Lorry Clayman
Patrick and Elena Coffey
Catherine Conlin
Susan B. Coogan
Evan Cowles and Brie Quinby
Keith R. Cudworth and Jane Coughlin*
Marisa Dal Ponte
Marjorie and Ronald Debold
Ms. Nancy M. Depalma
Jennifer and Marc A. DiBella
Sharon F. and George Dickerman
Marian Dziana and Karen Cormier
Susan Fay
Art Feltman and Dale James Wallington
Joan Fox
Arthur Franklin
Jerry and Ida Franklin
Catherine Franks
Helen and Henry Frye
Michael Fuss
Barbara Gallo
Carol and Peter Ganick
Ken and Jennifer Geisler
Robert and Francine Goldfarb
Felice Goldman

Firooz and Maria Golkar
William T. Gough and Jane Cook
Eileen Griffin
Lillian G. Harter
Ronald V. and Patricia Hensley
Warren Hollister
Beverly J. and Richard L. Hughes III
Polly Huntington
Susan Huntington
Valerie and Mathew Jasinski
Evan H. Johnson and Kevin Chick
James J. Keller and Candice M. Chirgotis
Kitchen and Bath Design Construction
Dr. Alan and Lydia Klatsky
David and Jan Klein
Linda Koflanovich
Michele and Dane Kostin
Darwin W. and Susan Kovacs
Lee G. Kuckro
Nancy and Jerry Lahman
Supriya and Vijay Laknidhi
Annette Landry
Christopher Larsen
Marcia Lattimore
John W. and Joyce R. Lemega
Sherwood and Gwendolyn Lewis
Peggy Lorence
Diane Mack and Robin Gilmartin
David T. and Judith W. Macri
Gloria Magliozzi
Lenore Mand
Judith C. and David L. McChesney
Joy McConnell
Kenton McCoy
Thomas and Marjorie Michalski
Donald N. and Regina M. Miller
Rachel Miller
Marjorie E. Morrissey
Richard E. and Paula Musgrave
Barbie Nadal-Cristofaro and Victor
Cristofaro
Wilbur J. and Amy Sevell Nelson



Kathy and Walter Nicksa

Jo Nol

Julia O'Brien

Dottie O'Meara

Nancy Pacht

Linda Parent

Marlene Passman

Saul and Joanne Pasternack

Gerald Pastor and Jane Porterfield

Kristen M. Phillips and Matthew Schreck

Dina Plapler and Earl McMahon

Rochelle Pleet

Leslie Pollack

Roberta W. Prescott* and Robert O.
Hurwitz*

Susan Rathgeber

Martey S. Rhine

Margaret and Charles Rich

Margaret Rick

Judith Rifkin

Christina and Ezra Ripple

Robert Rodner

Sari and Jim Rosokoff

Marjorie Ross

Barbara Rubin

Linda Ryan

Jennifer and Christian Sager

Larry Samplatsky and John Tackus

Phyllis and Austin Sheridan

Carol L. Sirot

Jen and Kenneth Siskind

Gilbert and Ruth L. Small

Leslie Smith and Philip Wellman

Kevin and Marcia Smith

Larry Starr

Kate Steven

Dot and George Stone

Donna M. and Sam Stout

Mervyn Strauss

Robert H. Tabshey

Eleanor D. Tener

Fred Timme

Mary Lee Morrison

Hope W. Vath

Theresa Waltz

Linda Webber

Judith and Joel Weisman

Peter M. and Ellen T. Zeman

* deceased



JUST BECAUSE
I LOVE YOU

LUX BOND & GREEN 
JEWELERS *celebrating* 125 YEARS

46 LASALLE ROAD WEST HARTFORD 860.521.3015
140 GLASTONBURY BLVD GLASTONBURY 860.659.8510

MOHEGAN SUN WESTPORT WELLESLEY BOSTON CONCIERGE

EVERY BOX HAS A STORY™

SHOP ONLINE AT LBGREEN.COM OR CALL US AT 800.524.7336