



# HAND TO GOD

July 20 – August 26

theaterworks

## from the director

**HAND TO GOD** has experienced a meteoric journey from its beginnings in a tiny off-Broadway theater to its success as a Tony-nominated Broadway hit to its current status as one of the most-produced plays in the country. What is it about this irreverent comedy set in a Lutheran church in Cypress, Texas that has so captured the hearts and minds of the American theater-going public?

Playwright Robert Askins drew from his own life in creating **HAND TO GOD**; he grew up in Cypress and was a devout Lutheran whose mother ran a puppet ministry for the church and whose father passed away when he was a young man, just like the protagonist, Jason. But within that very specific autobiographical world, Askins also explores some big questions about the power of faith, the nature of morality, the challenges of family dynamics and the effects of grief. Audiences can engage with these universal themes no matter their faith, age or background. Can't we all relate to the desire to let our inner id free from the restraints of polite society and be outrageous? Haven't we all struggled with the task of being good, moral and generous when it seems like the bad guys have all the fun?

**HAND TO GOD** has been lauded across the globe for its hilarious lines, original characters and madcap situations, but perhaps the real secret to its success is the truthful heart at its core, proving that the very best comedy comes from the most honest places.

Tracy Brigden

**Producing Partner**  
**John and Kelly Hartman Foundation**

Cover design by **WondriskaRusso**  
Photo by **Lanny Nagler**

† Associate Member of SDC, Stage Directors and Choreographers Society.

\* Member of Actors' Equity Association, Union of Professional Actors and Stage Managers in the U.S.

#Blessed



@theaterworksct

#HandToGod



theaterworkshartford

#SpeakOfTheDevil



@theaterworksct

# HAND TO GOD

by Robert Askins

directed by Tracy Brigden†

## THE CAST

(in order of appearance)

Jason/Tyrone

NICK LaMEDICA\*

Margery

LISA VELTEN SMITH\*

Jessica

MAGGIE CARR\*

Timmy

MILES G. JACKSON\*

Pastor Greg

PETER BENSON\*

Scenic Design/Projections

LUKE CANTARELLA

Costume Design

TRACY CHRISTENSEN

Lighting Design

MATTHEW RICHARDS

Sound Design

ELIZABETH ATKINSON

Puppet Design

STEPHANIE SHAW

Fight Choreographer

ROBERT WESTLEY

Casting

CAPARELLIOTIS CASTING

LAUREN PORT, CSA

Assoc. Scenic Design

LIANNE ARNOLD

Production Manager

BRIDGET SULLIVAN

Stage Manager

KATE J. CUDWORTH\*

**HAND TO GOD** was developed by The Ensemble Studio Theatre/Youngblood Program at Southampton Arts in July 2011 and received its world premiere production at The Ensemble Studio Theatre in October 2011.

Off-Broadway Premiere at the MCC Theater March 10, 2014

Artistic Directors: Robert LuPone, Bernard Telsey & William Cantler

Executive Director: Blake West

Originally produced on Broadway by Kevin McCollum

Broadway Global Ventures CMC Morris Berchard Mariano V. Tolentino Jr.

Stephanie Kramer LAMS Productions DeSimone/Winkler

Joan Raffé & Jhett Tolentino Timothy Laczynski Lily Fan Ayal Miodovnik

JAM Theatricals Ensemble Studio Theatre MCC Theater

**HAND TO GOD** is presented by special arrangement with

Dramatists Play Service, Inc., New York.

TheaterWorks is celebrating its 32nd season as a non-profit, professional theater company. Founded in 1985.

HAND TO GOD

is the 5th production of the 2017-2018 Season.

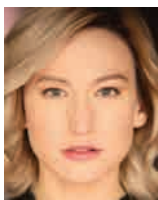
TheaterWorks • 233 Pearl Street • Hartford, CT 06103 • 2018

who



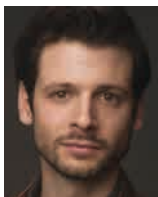
**PETER BENSON** (Pastor Greg) is pleased to be making his **TheaterWorks** debut. Most recently, he appeared in *The Sting*, with Harry Connick, at Paper Mill Playhouse. Broadway: *The Mystery of Edwin Drood*, *Harvey*, *Promises, Promises*, *To Be or Not To Be*, *Boeing/Boeing*, *The Pajama Game*

(Outer Critics Circle Nomination), *Wonderful Town*, *Cabaret*, *Little Me*, *An American Daughter* and *State Fair*. He has recorded eight original Broadway cast albums. Off Broadway: *Distracted* (Roundabout), *Birth & Afterbirth* (Atlantic), *The New Moon* (City Center), *The Country Club* (Drama Dept. & Long Wharf) *Urban Dictionary Plays* (twice at Ars Nova), and many others. Recent Television guest star roles include *Louis CK*, *Horace & Pete*, *Banshee* (season 4), *Elementary*, *The Americans*, *Blue Bloods*, and *Blacklist*. He lives in New York City and Wethersfield, CT with his wife and two children.



**MAGGIE CARR** (Jessica) couldn't be happier to be making her **TheaterWorks** debut! Off Broadway/NYC: *Hot Mess* (Jerry Orbach Theatre); *Walken On Sunshine* (FringeNYC); *The Angel of Allegheny County* (New Wave Theater Collective). Regional: *The Villains' Supper Club* (Merrimack Rep); *Hand to God*

(City Theatre); *First Date*, *Judge Jackie Justice*, Kopit and Yeston's *Phantom* (Pittsburgh CLO); *Country House* (The REP). Readings and workshops: *Dry Bones*, *Nomad Motel*, *The Consequences*, *You Are What You* (City Theatre); *Xanadu*, *First Date*, *Judge Jackie Justice* (Pittsburgh CLO). Film/TV: *Gone* (NBC), *Help Me First* (Drafthouse). Web: *Maggie vs. Evil Dead*, *Conversations w/ My Ex* (Fifty2&Nine Productions). NYC Producer: *Walken On Sunshine*. *Maggie vs. Evil Dead*, *Sweeney Todd* (Carnivale Theatrics),... *Spelling Bee* and *Dog Sees God* (Black and White Theatre Co.). Writing: *Open House*, *The Sisters Sorella*, *Maggie vs. Evil Dead*. Maggie has also been a contributor to HorrorFuel, iamgeek, and FanFest. She loves her husband Billy very much. Instagram: @maggiecar Twitter: @Magthecar



**MILES G. JACKSON** (Timmy) is excited to be making his **TheaterWorks** debut in this insane play. Recent stage credits include *Typhoid Mary*, *Tribes* (Barrington Stage Company), *Miss Bennet...Pemberley* (The Rep of St. Louis), *My Name is Asher Lev* (George Street Playhouse), *4000 Miles* (Capital Rep),

and *Mad Forest* (Williamstown). TV/Film: *In Reality* (dir. Ann Lupo), *Flora* (dir. Sasha Vukovic), and *The Last O.G.* on TBS opposite Tracy Morgan. Thanks to every single person involved. Sorry mom and dad. milesgjackson.com



**NICK LaMEDICA** (Jason/Tyrone) is excited to be making his **TheaterWorks** debut. Recent favorite credits include the regional premiere of *The Curious Incident of the Dog in the Night-time* (Repertory Theatre of St. Louis/ Cincinnati Playhouse in the Park) *Hand to God* (City Theatre Company), *How I Learned to Drive* (Cleveland Play House/Syracuse Stage), *War Horse* (1st National Tour & Tokyo), *As You Like It* (Denver

Center), *Benediction* (World Premiere Denver Center), and *Much Ado About Nothing* (Two River Theatre). He has appeared on television in *Mysteries at the Museum* and in various commercials for Hasbro, Krispy Kreme, Microsoft, and Planned Parenthood. Nick is a graduate of Marymount Manhattan College's BFA Acting and Musical Theatre programs and a proud member of Actors' Equity Association.



**LISA VELTEN SMITH** (Margery) is thrilled to be reprising the role of Margery at **TheaterWorks** after a fantastic run at City Theatre in Pittsburgh. A recent transplant to Pittsburgh, other credits include Pittsburgh Public Theatre's productions of *Equus* and *Disgraced* and City Theatre's productions of *Nomad Motel* and *Oblivion*. Broadway: *After Miss Julie* (Roundabout Theatre). Off B'way: *Spirit Control* (Manhattan Theatre Club), *Antony and Cleopatra*, *All's Well That Ends Well* (Theatre for a New Audience). Other select credits include *Greedy* (Clubbed Thumb), *Silent Heroes* (Roundtable Ensemble), *FUBAR*, *Love/Sick* (Project Y Theatre), *Rabbit Hole* (Premiere Stages), *Paris Commune* (La Jolla Playhouse), *Bash* (About Face Theatre), *Absolution* (Steppenwolf Garage). TV/Film: *Gone*, *White Collar*, *Law and Order*, *Law and Order: Criminal Intent* (recurring), *Early Edition*, *Feast of the Seven Fishes*, *Proxy*, *In Our Nature*, *100 Towels*, *What Are You Having?* among others. BFA: The Theatre School at DePaul University, MFA: University of California, San Diego. Lisa is an artistic associate of Project Y Theatre in New York City and teaches voice at Carnegie Mellon University's School of Drama. Love to my family.



**ROBERT ASKINS** (Playwright) was born in Cypress, Texas in 1980. He moved to New York in 2005. His Obie Award winning, Tony nominated play **HAND TO GOD** was a smash hit on Broadway after a 2014 run at MCC and three sold-out runs at Ensemble Studio Theater in 2011-12. In 2009, his play *Princes of Waco* was produced by EST/Youngblood. His one-act play *Matthew and the Pastor's Wife* was a part of Marathon 2010 at EST, and *The Love Song of the Albanian Sous Chef* won a Dallas Outer Circle Critics Award in 2011. Askins is proud to be an alumnus of I-73, Youngblood, and a member of the Ensemble Studio Theatre. He has received two EST/Sloan grants, an Arch and Bruce Davis Award, and is one of the 2012 recipients of the Helen Merrill Award for emerging playwrights.



**TRACY BRIGDEN** (Director) is thrilled to be back at **TheaterWorks** where she has directed *Midsummer (a play with songs)* and *Art*. *Midsummer* was nominated for four Connecticut Critics Circle awards: Best Production, Director, Actor and Actress. Tracy served as Artistic Director at City Theatre Company in Pittsburgh for 16 years directing over 50 productions of new plays including world premieres by Christopher Durang, Keith Reddin, Adam Rapp, Jeffrey Hatcher and many others. Recent work includes *Ironbound* by Pulitzer-winner Martyna Majok, *The Guard* by Jessica

## who

Dickey, and *Hand to God* (at City), *An Act of God* by David Javerbaum (at Bucks County Playhouse), and *Heisenberg* by Simon Stephens (at Pittsburgh Public Theater). Upcoming productions include *The Roommate* at Cincinnati Playhouse, *A Doll's House, Part 2* by Lucas Hnath at Arden Theatre Company and the American premiere of *Oil* by Ella Hickson at The Olney Theater Center. Prior to City Theatre, Tracy served on the artistic staffs of Manhattan Theatre Club and Hartford Stage Company. Tracy thanks the team and artists at City Theatre for all the work on the Pittsburgh production of **HAND TO GOD**, which inspired and informed this production.



**ROB RUGGIERO** (Producing Artistic Director) has been part of **TheaterWorks** artistic leadership for 25 years. He has directed over 50 shows, including *The Legend of Georgia McBride*, *Constellations*, *Next to Normal*, *Relativity*, *Sex with Strangers*, *Christmas on the Rocks*, *The Other Place* and *Time Stands Still*. His Broadway credits include *Looped* (starring Valerie Harper in a Tony-nominated performance) and *High* (starring Kathleen Turner). Off-Broadway, he conceived and directed the musical revue *Make Me a Song: The Music of William Finn* (Nominated for Drama Desk and Outer Critics Circle Awards). Rob conceived and directed *Ella*, a musical portrait of Ella Fitzgerald, which has been seen at 24 regional theaters and on National Tour. His work has received multiple awards in Connecticut and around the United States. In his tenth collaboration with Goodspeed Musicals, Rob directed *Rags*. He also directed highly successful productions of *La Cage aux Folles*, *Fiddler on the Roof* (Connecticut Critic's Circle Award for Best Direction), *The Most Happy Fella* (Connecticut Critic's Circle Award for Best Direction), *Carousel* (Broadway World Award), *Annie Get Your Gun*, *Camelot*, *Big River* and *1776*. His adaptation of *Show Boat* is now being licensed by the Rogers & Hammerstein Organization. [robruggiero.com](http://robruggiero.com)

**LUKE CANTARELLA** (Scenic and Projection Design) **TheaterWorks:** *The Call*, *Buyer & Cellar*, *Good People*, *Woody Sez*, *The Other Place*, *Time Stands Still*, *The Understudy*, *This*, *Broke-o-logy*, *Speech and Debate*, *Blackbird*, *Driving Miss Daisy*, *Chesapeake*, *Lobby Hero*, *Spinning into Butter*, *Ten Unknowns*, *Blue/Orange*, *The Last Five Years*, *The Exonerated*, *Rabbit Hole* and *Dinner with Friends*. NYC: *Sex Tips for Straight Women from a Gay Man*, *Berenstain Bears Live*, Atlantic Theater Company. Regional: American Repertory Theater, Cleveland Play House, MUNY, Goodspeed Musicals, Seattle Rep. Milwaukee Repertory Theater, Repertory Theater of St. Louis, Yale Rep, Pittsburgh Public, Northlight, Prince Music Theater, RedCAT, Berkshire Theater Festival, Barrington Stage, People's Light & Theater. Opera: Curtis, Peabody/Baltimore Lyric Opera, Wolftrap. Upcoming: *Gypsy* (MUNY) and *Evita* (St. Louis). [lukecantarella.com](http://lukecantarella.com)

**TRACY CHRISTENSEN** (Costume Design) is pleased to return to **TheaterWorks** after designing *The Call* in 2016. Tracy recently designed the Broadway revival of *Sunset Boulevard* starring Glenn Close, *Candide* at Carnegie Hall with John Lithgow, and *Carousel* for London's English National Opera. Also: *Mamma Mia* for the Idaho Shakespeare Festival, the premieres of *Anne of Green Gables* at the Merry-Go-Round Playhouse and Kate Hamill's adaptation of *Pride*

& *Prejudice* off Broadway, *Sweeney Todd* starring Emma Thompson, *Souvenir* (Broadway), *Lady Day at Emerson's Bar & Grill* (film for HBO with Audra McDonald), and *Oklahoma!* (Goodspeed Musicals). 10 seasons: Chautauqua Theatre Company. Faculty member: SUNY Purchase for costume design. [tracychristensen.com](http://tracychristensen.com)

**MATTHEW RICHARDS** (Lighting Design) **TheaterWorks:** *The Invisible Hand, Shakespeare's R&J, American Buffalo, Souvenir, Speech and Debate, Seafarer, Driving Miss Daisy, Doubt, Woman Before a Glass.* Broadway: *Ann.* Opera: *Macbeth* at L.A. Opera. Off-Broadway: *Is God Is* at Soho Rep; *Absolute Brightness...*, and *The Curvy Widow* at Westside Arts; *The Killer, Tamburlaine, and Measure For Measure* at Theatre for a New Audience; *A Funny Thing ...* at MCC. Regional: Actor's Theater of Louisville; Arena Stage; Baltimore's Center Stage; Cincinnati Playhouse; Cleveland Play House; Dallas Theater Center; Ford's Theatre; The Goodman; Hartford Stage; The Huntington; La Jolla Playhouse; Long Wharf; The Old Globe; Shakespeare Theatre; Westport Playhouse; Williamstown Theatre Festival; Yale Repertory Theatre.

**ELIZABETH ATKINSON** (Sound Design) is delighted to be back working with **TheaterWorks**. Liz is currently based in Philadelphia, after many years in Pittsburgh where she was Resident Sound Designer at the City Theatre Company. Her freelance career includes regional theatre credits at Applied Mechanics, InterAct Theatre, The Wilma, Walnut Street Theatre, Yale Repertory Theatre, Hartford Stage, Quantum Theatre, and Pittsburgh Irish and Classical Theatre. The Pittsburgh Post-Gazette named her sound designer of the year in 2003, 2006, and 2007. She is a faculty member at Swarthmore College, and previously at Point Park University and Carnegie Mellon University. Liz has also had the honor of exhibiting at the 2007, 2011 and 2015 Prague Quadrennials.

**STEHANIE SHAW** (Puppet Design and Construction) received her BFA in Theatre Design and Technology from WVU and her MFA in Costume Design and Technology from Purdue University. She has served as costume shop manager and costume technologist for Purdue University, The University of Maryland, Weston Playhouse, Texas Shakespeare Festival, North Shore Music Theater, Des Moines Metro Opera, the City Theatre Company of Pittsburgh, as well as the Instructional Assistant Professor of Costume Technology for the University of Mississippi, Ole Miss. Thank you to TheaterWorks for this opportunity.

**ROBERT WESTLEY** (Fight Choreography) has choreographed movement for award winning theatre productions, acclaimed operas and film, developing unique and exciting performances of dance, clowning, aerial acrobatics, puppetry and martial art. Broadway: *Gettin' The Band Back Together; A Bronx Tale: The Musical; Hand to God.* Off-Broadway: *Teenage Dick* (The Public Theater); *Important Hats of the Twentieth Century* (MTC); *Things of Dry Hours* (New York Theatre Workshop); *Verité* (LCT3); *Butcher of Baraboo* (Second Stage Theater). Regional: *The Honeymooners* (Paper Mill Playhouse); *The Sting* (Paper Mill Playhouse); *Romeo & Juliet* (Utah Shakespeare); *Bedroom Farce* (Westport Country Playhouse); *The Game's Afoot* (Asolo Repertory Theatre); *Wait Until Dark* (Great Lakes Theater/Idaho Shakespeare Festival). Film: *The Key Man; Victoriana; Eyeborgs.*

who

### CAPARELLIOTIS CASTING/LAUREN PORT, CSA

Upcoming Broadway: *Les Liaisons Dangereuses*, *The Front Page* and *The Glass Menagerie*. Recent and Select Broadway/Off-Broadway: *Blackbird*, *The Father*, *An Act of God*, *Fish in the Dark*, *It's Only a Play*, *Airline Highway*, *Disgraced*, *Sex with Strangers*, *Lost Lake*, *The Country House*, *Casa Valentina*, *Holler if Ya Hear Me*, *The Trip to Bountiful*, *Dead Accounts*, *The House of Blue Leaves*, *Grace*, *Seminar*, *Lend Me a Tenor*, *Fences*. Also: MTC, 2nd Stage, Atlantic, LCT3, Ars Nova, The Old Globe, Goodman, City Theatre, McCarter and others. Film/television: *American Odyssey*, (NBC), *How to Get Away With Murder* pilot (ABC), *Ironside* pilot (NBC), *Steel Magnolias* (Sony for Lifetime).

**BRIDGET SULLIVAN** (Production Manager) is enjoying her third season with **TheaterWorks**. Her experience includes production and project management, as well as many years in the world of props. Head of production for the Weston Playhouse Theatre Company in Vermont for 7 years, Bridget's past work also includes managing celebrity concerts at North Shore Music Theatre and Project Manager for Barbizon Lighting Company for several years. Highlights of her props and management credits also include City Theatre Company in Pittsburgh and the Santa Fe Opera. A proud graduate of Randolph-Macon Woman's College in Lynchburg, VA., Bridget has a BA in Theatre Arts and hails from Bucks County, Pennsylvania.

**KATE J. CUDWORTH** (Production Stage Manager) has enjoyed four seasons and 29 productions with **TheaterWorks** including *The Invisible Hand*, *The Legend of Georgia McBride*, *The Wolves*, *Fade*, *Next to Normal*, *Sunset Baby*, *Relativity*, *Midsummer*, *Woody Sez* and *Becoming Dr. Ruth*. Off-Broadway: *Freud's Last Session*, [title of show]. NY/Regional: Barrington Stage Company (8 seasons including *Freud's Last Session*; *Dr. Ruth*, *All The Way*; *Joe Iconis' The Black Suits*), Atlantic Stage Company, Hartford Stage, Manhattan School of Music (4 seasons), Yale Opera, York Theatre Company, Bronx Opera Company, Fringe NYC, NYMF.

## MAKING THINGS HAPPEN



Hartford  
Foundation  
FOR PUBLIC GIVING



greater hartford  
arts council



THE  
HARTFORD

TRAVELERS

aetna<sup>SM</sup>

Connecticut  
still revolutionary

The Edward C. & Ann T.  
Roberts  
FOUNDATION

J. WALTON BISSELL  
FOUNDATION

United  
Technologies

Bank of America

THE SHUBERT  
FOUNDATION INC.

Lincoln  
Financial Foundation

The Maximilian E. & Marion O. Hoffman Foundation

Richard P. Garmany Fund

Ensworth Charitable Foundation, Bank of America, N.A., Trustee

The George A. & Grace L. Long Foundation, Bank of America, Co-Trustee

William and Alice Mortensen Foundation

The Saunders Foundation

TD Bank

People's United Bank



# 18/19

the renovation season

## **THE RIVER**

by **Jez Butterworth**

directed by **Rob Ruggiero**

October - November, 2018

## **A DOLL'S HOUSE PART 2**

by **Lucas Hnath**

directed by **Jenn Thompson**

January - February, 2019

## **TBA**

March - April, 2019

## **ACTUALLY**

by **Anna Ziegler**

directed by **Taneisha Duggan**

May - June, 2019

## **FULLY COMMITTED**

by **Becky Mode**

directed by **Bill Fennelly**

July - August, 2019

TRY.

FAIL.

LEARN.

REPEAT.

Or, join YUPntwk at

**F\*CKUP NIGHTS HARTFORD!**

YUPntwk is a local network of young urban professionals: creatives, storytellers and content creators with bold ideas and an appetite for positive change. We're excited to bring FuckUpNights to Hartford in collaboration with TheaterWorks.

Fuckup Nights is a global movement and event series where creators come together to share stories of professional failure. Hear the stories of the business that crashes and burns, the deal that goes sour, the product that has to be recalled... we tell them all.

***For more information visit  
[fuckupnights.com/hartford](http://fuckupnights.com/hartford)***

**Fuckup**<sup>®</sup>  
N I G H T S  
HARTFORD

**YUP**<sub>NTWK</sub>

in community with CT Public

## HAND TO GOD crew

### properties master

Kristen Garza

### props/paint assistant

Erin Sagnelli

### charge artist

Jess Ploszaj

### scenic assistant

Sean Sanford

### electricians

Chris Labik

Megan O'Brien

Josh Peterson

Anthony (TJ) Spinnato

### stage management intern

Scott Burrows

### foh interns

Samuel Boushee

Claudia Emmanuele

Megan Gwyn

Gia Curran-Lopera

Lydia Pettigrew

Rachel Sparks

### carpenters/electricians

Brianne Bolante

Jayne Carlman

Paul Dente

Cat Edwards

Kurt Fenster

Chris Lubik

Phil McInerney

Alec Montgomery

Megan O'Brien

Nicole Rivera

### production intern

Clare Coursey

### backstage interns

Aubrey Jowers

Emma McKeen

Erin Proctor

### arts workforce

### initiative intern

Maximillion Head

### hartford arts

### jobs grants interns

Sincere Lawson

Dynasti Johnson

# RESTAURANT PORRÓN



Bring in this  
ad & receive  
10% OFF

valid on dinner only in Restaurant Porrón,  
dine-in only, does not apply to  
beverage purchases.

@f @porronandpina  
porronandpina.com

Located in The Goodwin Hotel  
1 Haynes Street, Hartford, CT  
860.904.2101

RESTAURANT  
PORRÓN

BAR  
PIÑA



EVENTS at The Goodwin

the  
counter  
AT PORRÓN

## staff

Producing Artistic Director  
**Rob Ruggiero**

Producing Associate  
**Taneisha Duggan**

Director of Marketing/  
Communications  
**Freddie McInerney**

Director of Development  
**Dina Silva**

Audience Administration  
**Joshua Demers**

Business Associate /Devo  
Audience Services  
**Diana Sparks**

Technical Director  
**Zachry Pilat**

Stage Manager  
**Kate J. Cudworth**

Assistant Stage Manager/  
Wardrobe/  
Company Manager  
**Cecelia Chapman**

Production Photographer  
**Lanny Nagler**

General Manager  
**Nicole LaFlair Nieves**

Artistic Associate  
**Eric Ort**

Marketing Associate  
**Michael McKiernan**

Operations Manager  
**William Farquhar**

Production Manager  
**Bridget Sullivan**

House Managers/  
Audience Services  
**Robert Dusza**  
**Will Prenetta**

Assistant Technical Director  
**Sasha Wahl**

Audio-Visual Supervisor  
**Joe Staffa**

Master Electrician  
**Chris Bell**

Cafe Operator /  
Light Board Operator  
**Megan Velasquez**

Audience Services  
**Alexis Gardiner**

[twhartford.org](http://twhartford.org)

## board

Gerry Lupacchino (President)  
Dina Plapler (Vice President)  
Daniel O'Connell (Treasurer)  
Evan Johnson (Secretary)  
Jack Ellovich (Asst Secretary)  
Michael G. Albano  
Stacy Brusa  
Jennifer DiBella

Grace Figueredo  
Lee G. Kuckro  
Roberta Prescott  
Robert Pulito  
Dennis Russo  
Larry Samplatsky  
Tara Spain  
Montell Taylor

### THERE ARE MANY WAYS TO SHOW YOUR SUPPORT

Gifts of Cash  
Recurring Gifts  
Matching Gifts  
Gifts of Securities  
Planned Gifts

#### CONTACT DINA

[dina@theaterworkshartford.org](mailto:dina@theaterworkshartford.org) 860.986.7457

## thanks

Scott Bartley, bin228, Carl Zyskowski & Central Optica,  
Bob Charron, City Theatre Company, Michael Russo &  
Headlines, Greater Hartford YMCA, Hartford Stage, Kinsella  
Magnet School, John McGarvey & Les Cheveaux Salon,  
Long Wharf Theatre, Tasheba Taylor, University of Connecticut  
Storrs, Ed Weingart

# annual fund donors

## PLATINUM PARTNERS

Gifts of \$25,000+

Jeffrey and Nancy Hoffman  
David Holmgren  
LAZ Parking  
Bob Pulito and SLAM Collaborative  
Dr. Anne Rothstein and Jane Hellman  
Dennis Russo and WondriskaRusso  
Theresa and David Waltz

---

## GOLD PARTNERS

Gifts of \$10,000+

Lynn Beaulieu and Gerry Lupacchino  
Cheryl Chase and Stuart Bear Family Foundation  
Common Sense Fund  
Helen and Henry Frye  
Robert and Francine Goldfarb  
Ted and Adlyn Loewenthal  
Thomas W. and Emily B. Nissley  
Larry Samplatsky and John Tackus

---

## SILVER PARTNERS

Gifts of \$5,000+

Duff Ashmead  
Mark Boelhouwer  
Grace Figueredo and Ken Gostyla  
Warren Hollister  
Macca Plumbing and Heating  
Joy and Tom McConnell  
The Katharine K. McLane and Henry R. McLane Charitable Trust  
Francoise and Hans Miller  
Richard E. and Paula Musgrave  
Lanny Nagler and Lanny Nagler Photography  
Belle Ribicoff  
Alicia Roncari and Bin 228  
Jonathan and Sherry Schreiber  
Darlene C. and Guy A. Simonian  
Carol L. Sirot Foundation  
The Zachs Family Foundation

---

## BRONZE PARTNERS

Gifts of \$2,500+

Ted and Kathy Fleming  
Lee G. Kuckro  
Dr. Christopher K. Manning and Chuck Riott  
Dina Plapler and Earl McMahon  
Linda L. and Stephen E. Revis  
Rob Ruggiero  
The Kevin and Marcia Smith Charitable Fund  
Michael Wilder

---

## LEADING DONORS

Gifts of \$1,000+

Michael G. Albano and Nancy B. Alisberg	Barnes Group Foundation
Anonymous (3)	Cynthia Bates and Jonathan Russell
Dorothy T. Arnold	Peter and Lisa Block

# annual fund donors

## LEADING DONORS

Gifts of \$1,000+

continued

Trudi and Lou Brown	Wally and Chris Lamb
Amy Charney and Lewis K. Wise	Janet M. and Christopher Larsen
Margaret and William J. Cibes, Jr.	Judy Lewis
Sue Ann Collins	Barri R. Marks and Woody Exley
Kurtis L. Denison	Leta W. Marks
Jack and Alice Ellovich	Sheila Marks
The Fechter Family Foundation	Julia McCormack
Muriel and Karl Fleischmann	Marjorie E. Morrissey
Stefanie Foster	Janet U. Murphy
Catherine Franks	Dr. Stacy Nerenstone and Morton Weinstein
William Fuller and Sally Williams	Daniel and Lori O'Connell
The Gawlicki Family Foundation	Julie and David Peck
Irving L. Gilman Family Foundation	Margaret Doherty Penepent
John Gouveia	Roberta W. Prescott and Robert O. Hurwitz
Floyd Green	Alvin B. Reiner
Peter Grzybala and Diane Korntheuer	Joan and Allan B. Reiskin
Susan Guralnik	Kenneth and Julie B. Saffir
Diana Haghighat and Gerardo Gutierrez	Darlene C. and Guy A. Simonian
Hartford Flavor Company	Helen and Nelson Sly
Brad M. and Jill J. Hutensky	Tara Spain
Douglas and Tita Hyland	Donna M. and Sam Stout
Evan H. Johnson and Kevin Chick	Robert H. Tabshey
Theodore Kaplan and Roberta F. Woronow	Tapper Charitable Foundation Dan and Janet Tracy

---

## LOYAL SUPPORTERS

Gifts of \$250+

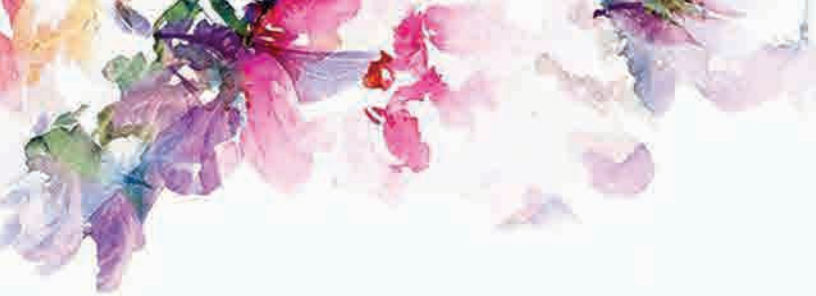
Acorn-Alcinda Foundation	Linda and Fred Cote
Victoria F. and Leonard Albert	Joseph Cotier
Lois and Bruce Anderson	Cynthia Courtney and Richard Orr
Margery and Norman Andrews	James and Sheryll-Ann Covill
Anonymous (2)	Mally and Jim Cox-Chapman
Kathleen and Thomas Archambault	Arline Croce
John R. and Angela Arrington	Richard A. and Aida Cyphers
Ann Azevedo and Donato T. DiGenova	Frances D'Amico
Thomas O. and Melanie A. Barnes	Marc and Karyn d'Avignon
Anthony and Beverley Bellisio	Etienne M. and Caroline D'otreppe
Andrew Benator	Catherine Daly and Roy Dion
Ross and Joyce Bray	Jennifer and Marc A. DiBella
Catherine and Bruce Bernstein	Kerry L. Dietz and Eva Schocken
Jon D. and Cheryl Bertus	Michele and John L. Dolan
James and Joan Betts	Hollis Dorman
Whitney Boynton and Kevin Galvin	Melissa J. Taylor-Doyle and Chris Doyle
Julie A. Brogan and Christopher A. Uhrich	Michelle and John Drain
Luke and Sara Bronin	Susan and Ned P. Dunn
Ellen M. Brown	Dr. Barbara Edelstein
James Bruno and William Gratz	Diane Ellsworth
Avery and Eileen Buell	David W. Epstein
Dae and Paul Bugl	Ellen Erway
John and Karen K. Byrne	Alycia B. Evica
Diane Cadrain and Joseph Rubin	Tracy Flater and Tony Falcetti
Arianna and Lori Calabrese	William and Joan Farquhar
Brian Carberg	Stanley and Susan P. Fellman
Lynn F. and Jack Cavo	Susan Fierberg and Howard Scheinblum
Susan R. Chandler	Daniel and Joan S. Fine
Blair Childs	David S. and Linda Fishman
Bernard Chowanec, Jr.	Eve and Edward Fishman
Ann Clark and David Ehler	David and Lynn Fleming
Constance Clark	Timothy A. and Roxane M. Fromson
Jonathan E. Clune and Sarah Potter	Rachel Galligan
Ellen and Kenneth J. Coco	Carol and Peter Ganick
James N. and Amy Jane Cohen	Ken and Jennifer Geisler
Donna Collins	Mary and Gary Gello
James P. Condren and Ellen J. Robinson	Edmond Genest
Connecticut Lighting Centers	Ceil Gersten
Catherine and Joseph Costa	Jean and Philip Gladstein
Donna R. and Arthur R. Cote	Catherine Godin

## LOYAL SUPPORTERS

Gifts of \$250+

continued

Bob Gordon  
Lynne G. and Bob Gordon  
William T. Gough and Mary J. Cook  
Daniel G. Green and Walter Langner  
John A. and Norma Green  
Michael and Barbara Grey  
David and Rachel Griffin  
Tim Grogan and Bill Anderson  
Nancy Grover  
Pierre and MaryEllen Guertin  
Laura Harris  
Brian E. Harvey and Sherry A. Manetta  
Nanci and Andrew Harvey  
Karen and Patrick Hatcher  
Frank Haviland and Shirley Mae Neu  
David J. and Lauren D. Henry  
Ronald V. and Patricia Hensley  
Debbie Hersh  
Jo Ann Hewett and George Burger  
Donna Lynn and Jay Hilton  
Donald and Helene Hirschfeld  
Dr. Nancy Humphreys  
Christine Hunihan  
Polly Huntington  
Joan Hurwitz  
Sharon and David Jepson  
David and HB Kaplan  
Harriet R. and I. William Katz  
Alan and Carolyn Kaufman  
Lynn J. and Eric P. Kaufman  
James Keller and Candice Chirgotis  
Sharon and Gary Kirkpatrick  
Kitchen and Bath Design Construction  
David and Jan Klein  
Myra R. and William Kleinman  
William Knight and Jill Adams  
Dr. and Mrs. Bernard Kosto  
Abbey and Stephen Kreinik  
David J. and Ruth Krugman  
Jacques Lamarre and Arthur Galinat  
Katherine J. Lambert  
Kenneth L. LaMonda, Jr.  
Valerie A. LaMotte  
Susannah Landis  
Carol and Hank Landry  
Ann and Bill Lazarek  
Charles and Joan Leach  
Ms. Barbara L. Lederer  
Randolph M. Lee  
William and Deanna Leikin  
Michael S. and Carolyn W. Levine  
Karen Licht  
Doreen Linton  
Jennifer Lotstein  
Marie and Bill MacLean  
Joyce and Bill Magee  
Kenneth and Cynthia Malm  
Adam Man  
William and Anita Mancoll  
Guy Marhewka  
Eileen M. Marks and Ed Mikolowsky  
Judy and Scott Mather  
Fran Mayer and David Weill  
Erin McGurk  
Debbie McInerney  
Freddie and Dennis McInerney  
Louis M. and Marjorie B. Mendelson  
Lewis Meroow  
George Miller  
Sal Modifica  
Susan Monks  
Michael Monts  
Polly Moon  
Johanna Morrison  
Bruce Mortimer and Sarah Kuerbitz  
Dr. Theodore F. and Carole Mucha  
Danielle K. and Jim Naylor  
Jennifer Noble  
Martha R. and Louis Nunes  
Bill and Joy O'Sullivan  
Robin Oremland  
Nancy Ort  
Charles H. Owens  
Alan and Michele Parker  
Nancy J. Parker  
Jeffrey and Joo Eng Partridge  
Gerald Pastor  
Dawn and Carolyn Pfeffer  
Matthew K. Poland  
Frances Porter  
Sandra and George Pruce  
Marion and Seth Radeen  
Jo-Anne Rankin and John Williams  
Stephen L. and Nancy Roberts  
Deborah Roncari  
Robin Roncari  
Barbara J. and Alan Rosenberg  
Michele Rosenberg  
Jeff Rudikoff and Edee Tenser  
Richard and Elizabeth Rumohr  
Edward Russo and Len Comeau  
William and Joan Russoniello-Goba  
Jennifer and Christian Sager  
James M. Salemi and Kenneth J. Bartschi  
Donald Salzberg and Susan Perl  
Linda M. Samoncik  
Martha Sandefer and Frederick Sweitzer  
Carolyn and Frank Sataline  
John J. and Suzanne D. Schloss  
Sharon and Lynn Scull  
Brenda and Lee Seitelman  
Judith and Gerard Selzer  
Candance J. and William Shanahan  
Robert Shepler  
Phyllis and Austin Sheridan  
Cathleen Shine and Richard Pomp  
Joseph Shortall and Sara Bernstein  
Christopher Shyer and David S. Ehrich III  
Steven and Susan Sigal  
Dina Silva  
Amy Lynn Silverman  
Douglas and Roberta Simpson  
Richard and Raimi Slater  
Gilbert and Ruth L. Small  
Phyllis and Howard Small  
Sharon W. and Robert H. Smith  
Tyler Smith and Lyn Walker  
Mary A. and William H. Smyers  
Stan and Muriel Sokolow  
Karin A. Stahl  
William Stapleton  
Sondra Astor Stave  
Charles Stebbens  
Barbara and Leon Stechenberg  
Marilyn S. Steinmetz  
Victoria Steven  
Robert Stillman and Leslie Fass  
Thomas and Donna Swarr  
Jerry Tarre  
John and Barbara Taussig  
Allan B. and Sally S. Taylor  
Montell and Anjanette Taylor  
Fred and Ruth Timme  
Roberto Tollis and Rick Marshall  
Humphrey Tonkin and Jane Edwards  
Douglas and Mildred Unfried  
James R. and Kay K. Wade  
Elizabeth J. Weber  
Reeves Westmoreland  
Robert and Penelope Whalen  
Gretchen H. Wiedie  
Arnold and Myrna Wyse  
Peter M. and Ellen T. Zeman  
Liz and Richard Zlatkus  
Alexander P. and Bella Zubkov



# Shine Bright



Quality • Value • Selection



## **LUX BOND & GREEN**

JEWELERS SINCE 1898

GLASTONBURY MOHEGAN SUN WEST HARTFORD WESTPORT BOSTON WELLESLEY

800.524.7336

EVERY BOX



HAS A STORY™ [LBGreen.com](http://LBGreen.com)

