



CONSTELLATIONS

theaterworks

January 18 - February 18



theater(words)

Rob Ruggiero // Director // Producing Artistic Director

CONSTELLATIONS is a really special theater experience. It is about many things: friendship, free will, science, choice vs. destiny – and a chance encounter between a physicist and a beekeeper. For me, however, this play is best summed up as a remarkable love story. The specificity and simplicity of how we experience this play is unique, funny, and very moving. For this production, I wanted to challenge us in new ways and offer you a new experience. The design is a bit more immersive than you're used to – the score you're hearing is interactive, and changes every night. These are things we've never done at TheaterWorks before. But there's something indescribable about this piece that compels me – it creates its own rules. Everything that happens to Marianne and Roland is a matter of probability and the rules of physics prevail. Together we can welcome the chance to consider the possibilities.

Taneisha Duggan // Assistant Director // Producing Associate

Actors—my tribe. Without them the work is purely a visual art. When casting for Roland we had warm recollections of watching M. Scott Mclean woo us with his performance in MIDSUMMER (a play with songs). And yet, no matter how much you may have loved someone previously, you never quite know if they're a good fit until you see them try it on. When Scott auditioned, we knew he'd bring something to the role that was quirky and oh so loveable. Finding Marianne was kismet, the universe always has a plan. Our search led us to Allison Pistorius. Little did we know that the cosmos had attracted Allison and Scott before, having studied together in grad school. They've admired each others work from afar, but had never gotten the chance to play opposite each other—until now. We have collided with these artists to offer you a glimpse of a world where nothing is planned, and everything is possible.

Eric Ort // Artistic Associate

How many ways can a rainy barbeque launch a relationship? In a multiverse, the answer is an infinite number of ways and those possibilities all exist simultaneously. In CONSTELLATIONS, we visit and revisit moments in the relationship of Marianne and Roland. With its unconventional, fugue-like structure, the play is not chronological. It moves across time and presents different possibilities that exist simultaneously. Though the world of the play is the multiverse that Marianne studies, the play is far from a clinical observation of time and space; it is deeply engaging because the possibilities orbit around one relationship. With Marianne and Roland we experience love, pain, loss, betrayal, reconciliation, and discovery. Through it all we are reminded that time is finite, but possibilities are infinite.

#Constellations

#LickYourElbows



@theaterworksct



theaterworkshartford



@theaterworksct

CONSTELLATIONS

by Nick Payne

THE CAST

(in order of appearance)

Marianne **ALLISON PISTORIUS***
Roland **M. SCOTT McLEAN***

Composer/Musician

BILLY BIVONA

Set Design	JEAN KIM
Lighting Design	PHILIP S. ROSENBERG
Sound Design	MICHAEL MICELI
Casting	McCORKLE CASTING
Assistant Director	TANEISHA DUGGAN
Production Manager	BRIDGET SULLIVAN
Stage Manager	KATE J. CUDWORTH*
Sign Language Coach	LAUREL WHITSETT

Directed by

ROB RUGGIERO[†]

Cover design by **WondriskaRusso** Photo by **Marion Belanger**

Bank of America 

Cheryl Chase & Stuart Bear Family Foundation

Originally produced on Broadway by the Manhattan Theatre Club,
Lynne Meadow, Artistic Director, Barry Grove, Executive Producer, and
The Royal Court Theatre by special arrangement with
Ambassador Theatre Group and Dodgers on December 16, 2014.

CONSTELLATIONS is presented by special arrangement with
Dramatists Play Service, Inc., New York.

[†] Member of SDC, Stage Directors and Choreographers Society.

* Member of Actors' Equity Association, Union of Professional Actors
and Stage Managers in the U.S.

TheaterWorks is celebrating its 32nd season as a non-profit,
professional theater company. Founded in 1985.

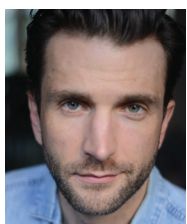
CONSTELLATIONS is the 2nd production of the 2017-2018 Season.

TheaterWorks • 233 Pearl Street • Hartford, CT 06103 • 2018

who



ALLISON PISTORIUS (Marianne) is making her **TheaterWorks** debut in *Constellations*. LORT credits include *Constellations*, *Sense and Sensibility*, *Clybourne Park* (Dallas Theater Center); *A Midsummer Night's Dream*, *The House of the Spirits*, *Othello*, *When We Are Married*, *A Christmas Carol* (Denver Center Theatre Company). Other regional highlights are *The Winter's Tale* (Trinity Shakespeare Festival), *Twelfth Night*, *Much Ado About Nothing*, *MacBeth* (Shakespeare Dallas); *Adding Machine: A Musical* (Theatre Three); *Venus in Fur* (Circle Theatre), *The Necessities* (Second Thought Theatre). Allison has an MFA from the National Theatre Conservatory and a BA in Theatre and Dance from The University of Texas at Austin. She teaches acting at Southern Methodist University and Booker T. Washington High School for the Performing and Visual Arts in Dallas, where she lives with her handsome husband and two crazy dogs.



M. SCOTT MCLEAN (Roland) **TheaterWorks:** (Bob) *Midsummer (a play with songs)*. Off Broadway: (Macduff) *Macbeth*, (Angelo) *Measure for Measure*, and (Willmore) *The Rover* at New York Classical Theatre. Regional Credits include: (Happy) *Death of a Salesman*, (Mitch) *Grace or the Art of Climbing*, (Amiens)

As You Like It, and (Jamison) *Animal Crackers* at Denver Center Theatre. (Emmett) *Legally Blonde* at Merry Go Round Playhouse Auburn, NY. (Willoughby) *Sense and Sensibility* at TheatreWorks Palo Alto, CA. Graduate of the American Academy of Dramatic Arts in NYC (A.O.S.) and The National Theatre Conservatory in Denver, CO (M.F.A.). A playwright and songwriter, solo albums include: 'Four Letter Words', and 'Stardust'. Scott wrote the book, and co-wrote the music and lyrics with his father, Michael, to *Fairy Tale Christmas The Musical* (World Premiere at Tuacahn Center for the Arts in Ivins UT, Christmas 2017). Looping infinite energy strings of love and gratitude around everyone at **TheaterWorks** for this incredible opportunity! Thank You Thank You Thank You Thank You.



BILLY BIVONA (Composer/Musician) graduated from the Hartt School of Music with a degree in Composition and French Horn performance in 2016. Billy's original compositions have been performed across the state. He has worked extensively in theater as a principal composer, orchestrator, transcriber, assistant music director, and performer on

a number of productions, including as an assistant to the creative team and music director for the world premiere of *Anastasia* at Hartford Stage in 2016. Billy previously played at **TheaterWorks** as a member of the *Next to Normal* band. He is a substitute organist and pianist for churches in Connecticut, as well as an actively gigging guitarist and core member of "World Soul": a musical group/artistic collaboration that connects musicians and artists across all cultures and mediums.




NICK PAYNE (Playwright) Works include *If There Is I Haven't Found it Yet* (Bush Theatre and Roundabout Theatre Company, New York), *Wanderlust* (Royal Court Theatre), Sophocles' *Electra* (Gate Theatre), *One Day When We Were Young* (Paines Plough/Sheffield Theatres and Shoreditch Town Hall), *Lay Down Your Cross* (Hampstead Theatre), *Constellations* (Royal Court Theatre and Duke of York's), and *The Same Deep Water As Me* (Donmar Warehouse). He is the recipient of the 2009 George Devine Award for Most Promising Playwright, 2012 Harold Pinter Playwright's Award, and the 2012 London Evening Standard Theatre Award for Best Play for *Constellations*.



ROB RUGGIERO (Director/Producing Artistic Director) has been part of **TheaterWorks** artistic leadership for 25 years. He has directed over 50 shows, including *Next to Normal*, *Relativity*, *Sex with Strangers*, *Christmas on the Rocks*, *The Other Place* and *Time Stands Still*. His Broadway credits include *Looped* (starring Valerie Harper in a Tony-nominated performance) and *High* (starring Kathleen Turner). Off-Broadway, he conceived and directed the musical revue *Make Me a Song: The Music of William Finn* (Nominated for Drama Desk and Outer Critics Circle Awards). Rob conceived and directed *Ella*, a musical portrait of Ella Fitzgerald, which has been seen at 24 regional theaters and on National Tour. His work has received multiple awards in Connecticut and around the United States. In his tenth collaboration with Goodspeed Musicals, Rob directed *Rags*. He also directed highly successful productions of *La Cage aux Folles*, *Fiddler on the Roof* (Connecticut Critic's Circle Award for Best Direction), *The Most Happy Fella* (Connecticut Critic's Circle Award for Best Direction), *Carousel* (Broadway World Award), *Annie Get Your Gun*, *Camelot*, *Big River* and *1776*. His adaptation of *Show Boat* is now being licensed by the Rogers & Hammerstein Organization. www.robruggiero.com

JEAN KIM (Set Design) is making her **TheaterWorks** debut. Jean trained as an Illustrator at Rhode Island School of Design (RISD), and as a Set Designer/Costume Designer at Yale School of Drama (YSD). Recent credits include *Once on This Island* at La Petit Theater, *Intimate Apparel* at Theater Squared and *Hamlet* at Allentown Shakespeare Festival. At Yale School of Drama her works include; *Cymbeline* at Yale Repertory Theater, *Winter's Tale* and *The Seagull* at Iselman theater and various shows at Yale Cabaret. Prior to Yale, Jean was an illustrator and muralist based in New York City. During her RISD era, she wrote, directed and produced "*RISD: the Musical*" which sparked her first love for dramatic and collaborative art. Upcoming shows include *The Chairs* at Bergen College, *Comedy of Errors* at Two River Theater, *Streetcar Named Desire* at La Petit Theater and *Letters from War* at Theater for New City. www.jeankimstudio.com

PHILIP S. ROSENBERG (Lighting Design) Broadway credits include *The Elephant Man*, *A Gentleman's Guide to Love and Murder* and *It's Only a Play*. Off Broadway credits include *The Ruins of Civilization*, *The Explorer's Club* and *Cactus Flower*. Regional credits include productions with:



who

Kennedy Center, La Jolla Playhouse, Ford's Theatre, The Guthrie Theater, The Old Globe, **TheaterWorks**, Hartford Stage, Huntington Theatre Company, Chicago Shakespeare Theatre, Shakespeare Theatre Company, Dallas Theatre Center, Denver Center Theatre, The Alley Theatre, Arena Stage, The McCarter Theatre, Manhattan School of Music, Portland Stage Company, TACT, Barrington Stage Company, Williamstown Theatre Festival, Dorset Theatre Festival, Bay Street Theatre, Goodspeed Musicals, Two River Theatre Company, George Street Playhouse, and Westport Country Playhouse.

MICHAEL MICELI (Sound Design) **TheaterWorks** credits include: *Third, I'll Eat You Last*, *Good People*, *Annapurna*, *Freud's Last Session*, *Christmas on the Rocks '13-'17*, *The Mountaintop*, *The SantaLand Diaries 2012*, *Speech & Debate*, and *Ella*. South Pacific at Asolo Rep; *Private Lives*, *Resurrection*, *Mahalia: A Gospel Musical*, *The Devil's Music*, *Crowns*, *Ain't Misbehavin'*, and *Floyd & Clea Under the Western Sky* at Hartford Stage; *Resurrection* at Philadelphia Theatre Company; *Daddy Long Legs* and *Emma* at Cincinnati Playhouse; *Emma* at Repertory Theatre of St. Louis; and *As You Like It*, *The Taming of the Shrew*, *Twelfth Night*, and *Macbeth* for ArtFarm. He designed sound for *Ella*, which ran at numerous regional theaters and as a national tour. Michael is partner at Miceli Productions, a photo and video production company. www.MiceliProductions.com

MCCORKLE CASTING, LTD (Casting) Pat McCorkle C.S.A., (Katja Zarolinski) Broadway: *Amazing Grace*, *End of the Rainbow*, *The Lieutenant Of Inishmore*, *The Glass Menagerie*, *Cat On A Hot Tin Roof*, *One Flew Over The Cuckoo's Nest*, *Amadeus*, *She Loves Me*, *Blood Brothers*, *A Few Good Men*, etc. Off-Broadway: *Stalking the Bogeyman*, *Becoming Dr. Ruth*, *Lady Day*, *Tribes*, *Our Town*, *Falling*, *Toxic Avenger*, *Freud's Last Session*, *Almost, Maine*, *Driving Miss Daisy*. Feature film: *Girl in the Lake*, *Premium Rush*, *Ghost Town*, *Secret Window*, *Basic*, *Tony and Tina's Wedding*, *The Thomas Crown Affair*, *The 13th Warrior*, *Madeline*, *Die Hard with a Vengeance*, *School Ties*, etc. Television: *St. George* (George Lopez Show), *Twisted* (ABC Family), humans for *Sesame Street*, *Californication* (Emmy nomination), *Hack* (CBS), *Strangers with Candy*, *Chappelle's Show* (Comedy Central), *Barbershop*, *Remember WENN* (AMC). mccorklecasting.com

LAUREL WHITSETT (British Sign Language Coach) is working with **TheaterWorks** for the first time. She holds an MA in Drama Text and Performance from the University of London King's College and the Royal Academy of Dramatic Art, and is pursuing a second MA in Linguistics at the University of Texas at Arlington, the same institution at which she teaches in the Theatre Arts and Disability Studies Departments. An award-winning actor and certified American Sign Language interpreter, she studies the differences between signed and spoken languages with the goal of fostering a more accessible theater experience for deaf and hard-of-hearing audiences. She has accent- and dialogue-coached notable personalities such as Chuck Norris

for *Walker, Texas Ranger* and Alice Braga for Fox TV's *Queen of the South*, and plans to earn a PhD upon completion of her MA program.



TANEISHA DUGGAN (Assistant Director)

TheaterWorks: *Race* (actor), *The Wolves* (Assistant Director) NYC: *Lesbian Love Octagon* (The Kraine), *Get to Nomi* (LaMama), *Flipside* (Fringe Festival NYC-HERE Arts Center), *Women of Roswell* (American Globe Theater), *Hamlet* (Purchase Repertory Theater). Regional:

Riding the Turnpike (HartBeat Ensemble), *Tigertigertiger* (Long Wharf Theater), *Raisin in the Sun* (Hartford Stage Company), *Cat on a Hot Tin Roof* (Hartford Stage Company). Education: Purchase College, State University of New York. Taneisha joined the **TheaterWorks** team in 2015, where she is charged with literary management, new work planning, artistic liaison, community engagement, and audience development.

BRIDGET SULLIVAN (Production Manager) is enjoying her second season with **TheaterWorks**. Her experience includes production and project management, as well as many years in the world of props. Head of production for the Weston Playhouse Theatre Company in Vermont for 7 years, Bridget's past work also includes managing celebrity concerts at North Shore Music Theatre and Project Manager for Barbizon Lighting Company for several years. Highlights of her props and management credits also include City Theatre Company in Pittsburgh and the Santa Fe Opera. A proud graduate of Randolph-Macon Woman's College in Lynchburg, VA., Bridget has a BA in Theatre Arts and hails from Bucks County, Pennsylvania.

KATE J. CUDWORTH (Production Stage Manager) has enjoyed four seasons and 28 productions with **TheaterWorks** including *The Wolves*, *Raging Skillet*, *Fade*, *Next to Normal*, *Sunset Baby*, *Relativity*, *Midsummer*, *Woody Sez* and *Becoming Dr. Ruth*. Off-Broadway: *Freud's Last Session*, *[title of show]*. NY/Regional: Barrington Stage Company (8 seasons including *Freud's Last Session*; *Dr. Ruth*, *All The Way*; Joe Iconis' *The Black Suits*), Atlantic Stage Company, Hartford Stage, Manhattan School of Music (4 seasons), Yale Opera, York Theatre Company, Bronx Opera Company, Fringe NYC, NYMF.

TheaterWorks 2017-2018 Season

Where you want to be.

twhartford.org

Call the Box Office at 860.527.7838
to learn more about 3 play subscriptions
and the rest of our exciting season.

Welcome to

Please remember to turn off
your cell phone before the
performance begins.

If you need to get up
during the performance,
please see an usher.

No texting or talking
during the show.

Thanks to our producing partners whose
generous support made this production possible.

Bank of America



TheaterWorks

TalkBacks follow many performances. We invite you to stay and join the conversation.

This play is performed without an intermission.

**Cheryl Chase & Stuart Bear
Family Foundation**

Photo by Marion Belanger



Les Cheveux Salon
Les Cheveux Salon
Les Cheveux Salon

(860) 236-3018

967 Farmington Ave, West Hartford

CONSTELLATIONS crew

carpenters

Kurt Fenster
Alec Montgomery
Michael Staffa

electricians

Jayne Carleman
Megan O'Brien

production interns

Nicole Rivera
Megan Velasquez

foh interns

Jarod Bakum
Asia Rosado
Chris Rowe
Rachel Sparks
Anna Waiter
Audrey Wilson

Allison Pistorius's hair by
E. John McGarvey for Les Cheveux Salon

MAKING THINGS HAPPEN



Hartford
Foundation
FOR PUBLIC GIVING



greater hartford
arts council



THE
HARTFORD

TRAVELERS

aetnaSM

Connecticut
still revolutionary

The Edward C. & Ann T.
Roberts
FOUNDATION

J. WALTON BISSELL
FOUNDATION

United
Technologies

Bank of America

THE
SHUBERT
FOUNDATION INC.

Lincoln[®]
Financial Foundation

The Maximilian E. & Marion O. Hoffman Foundation
Richard P. Garmany Fund

Ensworth Charitable Foundation, Bank of America, N.A., Trustee

The George A. & Grace L. Long Foundation, Bank of America, Co-Trustee

William and Alice Mortensen Foundation

The Saunders Foundation

thanks

Collette Benoit, Greater Hartford YMCA, Hartford Stage,
Hartt School, John McGarvey and Les Cheveux Salon,
Kinsella Magnet School, Claudia Pilat, Salute, Robert Tollis

post show Happy Hour
drink and food specials

bin228
panini & wine bar

860.244.9463

staff

Producing Artistic Director
Rob Ruggiero

Producing Associate
Taneisha Duggan

Director of Marketing/
Communications
Freddie McInerney

Director of Development
Dina Silva

Audience Administration
Joshua Demers

Production Manager
Bridget Sullivan

Technical Director
Zachry Pilat

Stage Manager
Kate J. Cudworth

Assistant Stage Manager/
Wardrobe/
Company Manager
Cecelia Chapman

Production Photographer
Lanny Nagler

Cafe Operator
Megan Velasquez

General Manager
Nicole LaFlair Nieves

Artistic Associate
Eric Ort

Communications/Audience
Michael McKiernan

Operations Manager
William Farquhar

Business/Box Office
Jill Atkinson
Diana Sparks

House Managers/Box Office
Robert Dusza
Will Prenetta

Assistant Technical Director/
Master Electrician
Sasha Wahl

Master Carpenter/
Audio-Visual Supervisor/
Joe Staffa

Light Board Programmer/
Carpenter
Chris Bell

Properties Master
Alyssa Voccola

twhartford.org

board

Gerry Lupacchino (President)
Dina Plapler (Vice President)
Daniel O'Connell (Treasurer)
Roberta Prescott (Secretary)
Evan Johnson (Asst Secretary)
Michael G. Albano
Stacy Brusa
Jennifer DiBella

Jack Ellovich
Grace Figueredo
Lee G. Kuckro
Robert Pulito
Dennis Russo
Larry Samplatsky
Tara Spain
Montell Taylor

THERE ARE MANY WAYS TO SHOW YOUR SUPPORT

Gifts of Cash
Recurring Gifts
Matching Gifts
Gifts of Securities
Planned Gifts

CONTACT DINA

dina@theaterworkshartford.org 860.986.7457

annual fund donors

PLATINUM PARTNERS

Gifts of \$25,000+

Jeffrey and Nancy Hoffman
LAZ Parking
Bob Pulito and SLAM Collaborative
Dr. Anne Rothstein and Jane Hellman
Dennis Russo and WondriskaRusso

PRODUCING PARTNERS

Gifts of \$5,000+

Duff Ashmead
Lynn Beaulieu and Gerry Lupacchino
Mark Boelhouwer
Cheryl Chase and Stuart Bear Family Foundation
Grace Figueredo
Helen and Henry Frye
Robert and Francine Goldfarb
Warren Hollister
Brad M. and Jill J. Hutensky
Lee G. Kuckro
Ted and Adlyn Loewenthal
Macca Plumbing and Heating
Joy and Tom McConnell
The Katharine K. McLane and Henry R. McLane Charitable Trust
Francoise and Hans Miller
Richard E. and Paula Musgrave
Lanny Nagler and Lanny Nagler Photography
Thomas W. and Emily B. Nissley
Belle Ribicoff
Alicia Roncari and Bin 228
Larry Samplatsky and John Tackus
Jonathan and Sherry Schreiber
Darlene C. and Guy A. Simonian
The Carol L. Sirot Foundation
Theresa and David Waltz
The Zachs Family Foundation

KEY CONTRIBUTORS

Gifts of \$2,500+

Ted and Kathy Fleming
The Gawlicki Family Foundation
Dr. Christopher K. Manning and Chuck Riott
Dina Plapler and Earl McMahon
Linda L. and Stephen E. Revis
Rob Ruggiero
Michael Wilder

LEADING DONORS

Gifts of \$1,000+

Michael G. Albano and Nancy B. Alisberg	Sue Ann Collins
Anonymous (2)	Kurtis L. Denison
Barnes Group Foundation	Jack and Alice Ellovich
Cynthia Bates and Jonathan Russell	The Fechter Family Foundation
Peter and Lisa Block	Muriel and Karl Fleischmann
Trudi and Lou Brown	William E. Fuller and Sally P. Williams
Amy Charney and Lewis K. Wise	Irving L. Gilman Family Foundation
Margaret and William J. Cibes, Jr.	Floyd Green

annual fund donors

LEADING DONORS

Gifts of \$1,000+

continued

Peter Grzybala and Diane Korntheuer	Janet U. Murphy
Susan Guralnik	Dr. Stacy Nerenstone and Morton Weinstein
Diana Haghighat and Gerardo Gutierrez	Daniel and Lori O'Connell
Hartford Flavor Company	Julie and David Peck
John and Kelly Hartman Foundation	Margaret Doherty Penepent
Douglas and Tita Hyland	Roberta W. Prescott and Robert O. Hurwitz
Evan H. Johnson and Kevin Chick	Robert F. and Patti Pulito
Theodore Kaplan and Roberta F. Woronow	Alvin B. Reiner
Wally and Chris Lamb	Joan and Allan B. Reiskin
Janet M. and Christopher Larsen	Kenneth and Julie B. Saffir
Judy Lewis	Helen and Nelson Sly
Barri R. Marks and Woody Exley	Tara Spain
Leta W. Marks	Donna M. and Sam Stout
Julia McCormack	Tapper Charitable Foundation
Marjorie E. Morrissey	Montell and Anjanette Taylor
	Dan and Janet Tracy

LOYAL SUPPORTERS

Gifts of \$250+

Victoria F. and Leonard Albert	James and Sheryll-Ann Covill
Lois and Bruce Anderson	Mally and Jim Cox-Chapman
Anonymous (2)	Richard A. and Aida Cyphers
Kathleen and Thomas Archambault	Frances D'Amico
John R. and Angela Arrington	Marc and Karyn d'Avignon
Ann Azevedo and Donato T. DiGenova	Etienne M. and Caroline D'otreppe
Thomas O. and Melanie A. Barnes	Catherine Daly and Roy Dion
Anthony and Beverley Bellisio	Jennifer and Marc A. DiBella
Andrew Benator	Kerry L. Dietz and Eva Schocken
Ross and Joyce Bray	Michele and John L. Dolan
Catherine and Bruce Bernstein	Michelle and John Drain
Jon D. and Cheryl Bertus	Susan and Ned P. Dunn
James and Joan Betts	Diane Ellsworth
Whitney Boynton and Kevin Galvin	David W. Epstein
Julie A. Brogan and Christopher A. Uhrich	Ellen Erway
Luke and Sara Bronin	Alycia B. Evica
Ellen M. Brown	William and Joan Farquhar
James Bruno and William Gratz	Stanley and Susan P. Fellman
Avery and Eileen Buell	Susan Fierberg and Howard Scheinblum
Dae and Paul Bugl	Daniel and Joan S. Fine
John and Karen K. Byrne	David S. and Linda Fishman
Lori Calabrese	Eve and Edward Fishman
Brian Carberg	David and Lynn Fleming
Lynn F. and Jack Cavo	Catherine Franks
Susan R. Chandler	Timothy A. and Roxane M. Fromson
Blair Childs	Rachel Galligan
Bernard Chowaniec, Jr.	Carol and Peter Ganick
Ann Clark and David Ehler	Mary and Gary Gello
Constance Clark	Edmond Genest
Jonathan E. Clune and Sarah Potter	Ceil Gersten
Ellen and Kenneth J. Coco	Jean and Philip Gladstein
James N. and Amy Jane Cohen	Catherine Godin
Donna Collins	Bob Gordon
James P. Condren and Ellen J. Robinson	Lynne G. and Bob Gordon
Connecticut Lighting Centers	William T. Gough and Mary J. Cook
Catherine and Joseph Costa	John Gouveia
Donna R. and Arthur R. Cote	Daniel G. Green and Walter Langner
Linda and Fred Cote	Michael and Barbara Grey
Joseph Cotier	David and Rachel Griffin
Cynthia Courtney and Richard Orr	Tim Grogan and Bill Anderson
	Nancy Grover
	Pierre and MaryEllen Guertin

LOYAL SUPPORTERS

Gifts of \$250+

continued

Laura Harris	Matthew K. Poland
Brian E. Harvey and Sherry A. Manetta	Frances Porter
Nanci and Andrew Harvey	Sandra and George Pruce
Karen and Patrick Hatcher	Marion and Seth Radeen
Frank Haviland and Shirley Mae Neu	Jo-Anne Rankin and John Williams
David J. and Lauren D. Henry	Stephen L. and Nancy Roberts
Ronald V. and Patricia Hensley	Deborah Roncari
Debbie Hersh	Robin Roncari
Jo Ann Hewett and George Burger	Barbara J. and Alan Rosenberg
Donald and Helene Hirschfeld	Jeff Rudikoff and Edee Tenser
Dr. Nancy Humphreys	Richard and Elizabeth Rumohr
Christine Hunihan	Edward Russo and Len Comeau
Polly Huntington	William and Joan Russoniello-Goba
Joan Hurwitz	Jennifer and Christian Sager
Sharon and David Jepson	James M. Salemi and Kenneth J. Bartschi
David and HB Kaplan	Donald Salzberg and Susan Perl
Alan and Carolyn Kaufman	Linda M. Samoncik
Sharon and Gary Kirkpatrick	Martha Sandefer and Frederick Sweitzer
Kitchen and Bath Design Construction	Frank Sataline
David and Jan Klein	Sharon and Lynn Scull
Myra R. and William Kleinman	Leon H. Seitelman
William Knight and Jill Adams	Judith and Gerard Selzer
Dr. and Mrs. Bernard Kosto	Candance J. and William Shanahan
Abbey and Stephen Kreinik	Robert Shepler
David J. and Ruth Krugman	Cathleen Shine and Richard Pomp
Jacques Lamarre and Arthur Galinat	Joseph Shortall and Sara Bernstein
Katherine J. Lambert	Christopher Shyer and David S. Ehrich III
Kenneth L. LaMonda, Jr.	Steven and Susan Sigal
Valerie A. LaMotte	Dina Silva
Susannah Landis	Amy Lynn Silverman
Ann and Bill Lazarek	Douglas and Roberta Simpson
Charles and Joan Leach	Richard and Raimi Slater
Ms. Barbara L. Lederer	Gilbert and Ruth L. Small
Randolph M. Lee	Phyllis and Howard Small
William and Deanna Leikin	Sharon W. and Robert H. Smith
Michael S. and Carolyn W. Levine	Tyler Smith and Lyn Walker
Karen Licht	Stan and Muriel Sokolow
Doreen Linton	Karin A. Stahl
Jennifer Lotstein	William Stapleton
Joyce and Bill Magee	Sondra Astor Stave
Kenneth and Cynthia Malm	Charlie Stebbins
Adam Man	Barbara and Leon Stechenberg
Guy Marhewka	Marilyn S. Steinmetz
Eileen M. Marks and Ed Mikolowsky	Victoria Steven
Judy and Scott Mather	Robert Stillman and Leslie Fass
Fran Mayer and David Weill	Thomas and Donna Swarr
Erin McGurk	Robert H. Tabshey
Debbie McInerney	Jerry Tarre
Freddie and Dennis McInerney	John and Barbara Taussig
Louis M. and Marjorie B. Mendelson	Allan B. and Sally S. Taylor
Lewis Merrow	Fred and Ruth Timme
Sal Modifica	Roberto Tollis and Rick Marshall
Susan Monks	Humphrey Tonkin and Jane Edwards
Michael Monts	Douglas and Mildred Unfried
Johanna Morrison	James R. and Kay K. Wade
Bruce Mortimer and Sarah Kuerbitz	Elizabeth J. Weber
Dr. Theodore F. and Carole Mucha	Reeves Westmoreland
Jenifer Noble	Robert and Penelope Whalen
Martha R. and Louis Nunes	Gretchen H. Wiedie
Bill and Joy O'Sullivan	Arnold and Myrna Wyse
Robin Oremland	Peter M. and Ellen T. Zeman
Nancy Ort	Liz and Richard Zlatkus
Charles H. Owens	Alexander P. and Bella Zubkov
Alan and Michele Parker	
Nancy J. Parker	
Dawn and Carolyn Pfeffer	



DAVID YURMAN

LUX BOND & GREEN

JEWELERS SINCE 1898

WEST HARTFORD MOHEGAN SUN GLASTONBURY WESTPORT