

TheaterWorks Hartford & TheatreSquared

IN ASSOCIATION WITH  
The Civilians

PRESENT

# RUSSIAN *Troll* FARM

A WORKPLACE COMEDY

by Sarah Gancher

Oct 20 - Nov 2

THEATER  
WORKS  
HARTFORD

## From the Playwright

This morning, I did a workout on YouTube. The algorithm showed me a political ad I didn't like, one I knew to contain lies. I scrolled down to look at the comments and my heart rate started spiking. I thought to myself: I know that most of these are not real people. I'm writing a whole play about it! How can I still be angry?

Somewhere in Saint Petersburg, there is a building full of Russians who are paid to pretend to be Americans (and Ukrainians, and Brits—and more.) There are units for fake news, for memes, for comments sections, etc. They are paid to make us mad, to make us indignant, to sow doubt, to start fights, to make us feel like the world is against us. Not everything they say is a lie. But they are lying about who they are—impersonating a crowd.

It works because of herd instinct. It works because we listen to rumor, hear-say and word-of-mouth more eagerly than official news. And it works because we love stories. Instead of going on, I'll share a story from an earlier version of the play:

**NIKOLAI**

OK so then did you know — and this is true — during the Khrushchev era, 1954.

The American CIA wanted to do a coup in Guatemala

On behalf of the big industrial fruit plantations—Dole, I think?

**STEVE**

Classic CIA. Capitalist pigs.

**NIKOLAI**

The CIA didn't have a lot of men to stage the coup.

What they had was a radio station. And two men took turns

They pretended to be newscasters, they said the American backed rebels had thousands of men, they invented a whole army marching towards Guatemala city, through the forest.

And the people believed them!

They gave up the city, the country, to the American-backed rebels, Without ever seeing the army. They just surrendered!

Just because the whole country got caught up in the story.

So if anything, a person who has 2016 technology

And the knowledge and practical tools in The Thirteen Laws of Story Should be able to pull off a lot more.

I mean who knows what we could achieve!

\* \*

**Who are the trolls you see in your feed? Which followers of yours are fake?**  
*Sarah Gancher*

WARNING: Federal law provides severe civil and criminal penalties for the unauthorized reproduction, distribution or exhibition of copyrighted motion pictures, Audio & Videotapes or Audio & Videodiscs. Criminal copyright infringement is investigated by the FBI and may constitute a felony with a maximum penalty of up to five years in prison and/or a \$250,000.00 fine.

#RussianTrollFarm

#TheaterWorksHartford



theaterworkshartford



@theaterworksct



@theaterworksct

# TheaterWorks Hartford & TheatreSquared

IN ASSOCIATION WITH

**The Civilians**

Present

## **RUSSIAN TROLL FARM** **a workplace comedy** **by Sarah Gancher**

directed by **Jared Mezzocchi**  
and **Elizabeth Williamson**

### **THE CAST**

(alpha)

Ljuba	MIA KATIGBAK
Nikolai	GREG KELLER
Egor	HASKELL KING
Steve	IAN LASSITER
Masha	DANIELLE SLAVICK

Set & Costume Design	BRENDA ABBANDANDOLO
Lighting Design	AMITH CHANDRASHAKER
Sound Design & Composer	ANDRE PLUESS
Multimedia Designer	JARED MEZZOCCHI
Dramaturg	ELIZABETH WILLIAMSON
Stage Manager	KATE J. CUDWORTH
T2 Stage Manager	JERRY JENSEN

Additional Lighting design and support from WebLD  
Andrew Cissna and Peter Leibold

Additional Multimedia design and support  
by ViDCo (Virtual Design Collective)

Andres Poch • Tori Schuchmann • Taylor Verrett • Kiana Vincenty

Cover Design by WondriskaRusso  
Actors appear with the permission of SAG/AFTRA

This program ©2020. Produced by special arrangement with ICM Partners, 65 East 55th Street, New York, NY 10022, Attn: Di Glazer. All rights reserved. This performance is authorized for non-commercial use only. By accepting this program, the viewer agrees not to authorize or permit the program to be recorded, copied, distributed, broadcast, telecast or otherwise exploited, in whole or in part, in any media now known or hereafter developed.

TheaterWorks is celebrating its 35th season as a non-profit, professional theater company. Founded in 1985.

**RUSSIAN TROLL FARM** is the 2nd production of the 2020-2021 Season.

TheaterWorks • 233 Pearl Street • Hartford, CT 06103 • 2020



# WHO



**MIA KATIGBAK** (Ljuba) is making her TheaterWorks Hartford debut. She is the Artistic Producing Director and co-founder of NAATCO (National Asian American Theatre Co.). Selected NYC productions: *Awake and Sing!* (Obie Award for Performance) and *Henry VI* (Actors Equity Foundation's St. Clair Bayfield Award) (NAATCO);

*The Headlands* (LCT3); *The Trial of the Catonsville Nine* (Transport Group); *Dear Elizabeth* (WP); Ivo van Hove's *Scenes From a Marriage* (NYTW). Other NYC: Ma-yi, New Georges, PlayCo, New Group, Soho Rep, Target Margin, Clubbed Thumb, Foundry, Public Theater. Regional work: Yale Rep, Long Wharf, Humana Festival, Two River Theater, Berkeley Rep, and the Guthrie. International: Manila, Philippines and Abu Dhabi, UAE. TV: *How to Get Away With Murder* (ABC), *The Sinner* (USA), *Chicago PD* (NBC), *Mysteries of Laura* (NBC). Awards: TCG Fox Foundation Resident Actor Fellow for Distinguished Achievement, Special Drama Desk Award (2019), Otto René Castillo Award for Political Theater; NYIT for Artistic Achievement; the Lily for Trailblazing; the Actors Equity's Rosetta LeNoire Award. BA from Barnard College and an MA from Columbia University.



**GREG KELLER** (Nikolai) is making his TheaterWorks Hartford debut. He has originated roles on and off Broadway in new plays by Stephen Adly Guirgis, Ayad Akhtar, Sarah Ruhl, Branden Jacobs-Jenkins, Amy Herzog, Richard Greenberg, Moises Kauffman, Theresa Rebeck, Mara Nelson-Greenberg, Jordan Harrison, Jenny

Schwartz, Daniel Goldfarb, Sheila Callaghan, Melissa Ross, Zayd Dohrn, Rachel Bonds, David Grimm, and Robert O'Hara, to name a few. As a playwright, Greg's play *Dutch Masters* has been performed in New York (nominated for Best New Play by the Off Broadway Theater Alliance), Los Angeles (LA Times' Critic's Choice, Ovation Recommended), Chicago (Chicago Tribune Critic's Pick, nominated for Jeff Award Best Production), and is currently receiving its first online streaming production at Northern Stage in Vermont.

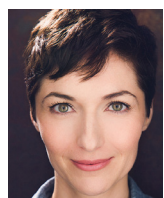


**HASKELL KING** (Egor) is making his TheaterWorks Hartford debut. Theatre credits include *Kingfishers Catch Fire* (Irish Rep); *Isaac's Eye*, *Photograph 51*, *Please Continue*, *Turnabout*, *PTSD*, *The Great Pretenders*, and *Bitter Taste* (Ensemble Studio Theatre); *Brother* (Paradise Factory); *Afterclap* (Rising Phoenix Rep); *Take Me*

*Out* (Caldwell Theatre); *Moons of Jupiter*, *Tales from the Schminke Tub* (One Solo Arts Festival); *Sweet Eros* (Mary's Space, dir. Austin Pendleton); *Elvis and Juliet* (Abingdon Theatre with Fred Willard); *Mother* (The Wild Project with Buck Henry and Holland Taylor). Film credits include *The Fly Room* (dir Alexis Gambis); *In Praise of Shadows* (with James Franco, dir. Jay Anania). Television: *As the World Turns*; *Law and Order: Criminal Intent*. Member of Ensemble Studio Theatre.



**IAN LASSITER** (Steve) is making his TheaterWorks Hartford debut. Broadway credits include *King Lear* (Cort); *Junk and War Horse* (Lincoln Center); *The Cherry Orchard* (Roundabout). Off-Broadway and regional credits include *Fabulation* (Signature); *Pushkin* (Sheen Center), *Ring Twice for Miranda* (NY City Center), *Pericles and An Octoroon* (TFANA); *Antony & Cleopatra* (Public Theater, RSC); *Great Comet of 1812* (Kazino); *Mission Drift* (Connelly; National Theatre, London); *Kiss* (Yale Rep); *Hamlet and Richard II* (Old Globe); *Oliver!* (Arena Stage); *Comedy of Errors* (Shakespeare & Co.); *An Iliad: Guerrillas at Troy* (Continuum Company in Florence, Italy); *Henry V* (Two River Theater). He is a member of the devised theatre group The TEAM and creator of the animated series *Mixed Race Ambiguously Ethnic Haiku Storytime Time!* [ianlassiter.com](http://ianlassiter.com) @lassiterindustries



**DANIELLE SLAVICK** (Masha) is making her TheaterWorks Hartford debut. Broadway: *The Other Place* (MTC). Off-Broadway: *I See You* (The Flea); *Through the Yellow Hour*, *Blind* and *That Pretty Pretty or The Rape Play* (Rattlestick); premiere of *A Bright New Boise* (Partial Comfort). Regional: *Jordan and Last of the Red Hot Lovers* (Northern Stage); *String Around My Finger* (Portland Stage); *Residence* (Humana Festival); *Sex with Strangers* (Portland Center Stage); *Diary of Anne Frank and Plainsong* (The Denver Center). Film: *False Positive*, *While We're Young*, *Adult Beginners*. TV: *Law & Order SVU*; recurring on *Hostages*, *Guiding Light*, and *Unforgettable*.



**SARAH GANCHER** (Playwright) is a playwright who loves epic stories, big ideas, and deep comedy. Her most frequent subject is how history is reflected in individual lives — how places, communities, and debates evolve over time. Her plays have been produced or developed at London's National Theatre, Edinburgh's Traverse Theatre, The Public, New York Theater Workshop, The Atlantic, Berkeley Rep, Steppenwolf, New York Stage and Film, Ars Nova, WP Theatre, The Flea, La Jolla Playhouse, Seattle Rep, Hartford Stage, RoundHouse, Mosaic (DC), P73, NYC Summerstage, and Telluride Theatre, among others. Sarah frequently collaborates with devising ensembles. She has written two musicals with rock band The Bengsons: *The Lucky Ones* (Richard Rodgers Award, Ars Nova), and *Hundred Days* (Under the Radar Festival, New York Theatre Workshop.) Both *The Lucky Ones* and *Hundred Days* garnered a number of Lortel, Drama League, and Drama Desk nominations and wins. Sarah was the collaborating playwright on award-winning musical *Mission Drift* written with director Rachel Chavkin, composer Heather Christian, and The TEAM. She has written for Blue Man Group and worked behind the scenes at The Colbert Report, The Metropolitan Opera Guild, The Big Apple Circus, and Norway's Stellanpolaris, among others. A current resident at New Dramatists, she currently teaches playwriting at NYU Tisch's Department of Dramatic Writing and The New School's MFA Playwriting program.

# WHO



**JARED MEZZOCCHI** (Co-Director / Multimedia Designer) is an Obie Award winning multimedia artist based out of Washington, DC. He is a resident artist at Woolly Mammoth Theater Company in Washington, DC and has directed and designed at theaters across the US including the Kennedy Center, Roundhouse Theatre, Milwaukee Rep, Portland Center Stage, Arena Stage, South Coast Rep, National Geographic, National Gallery of Art, and Baltimore Center Stage. In NYC, he has worked with Big Art Group, The Builders Association, Rob Roth, 3-Legged Dog, New Georges, and HERE Arts Center. In 2016, Jared designed projections for *Vietgone* at Manhattan Theatre Club, written by Qui Nguyen and directed by May Adrales, and received a Lucille Lortel Award, an Obie Award, and a Henry Hewes Award for his work. As a playwright, Jared was a 2017 fellow to the MacDowell Colony. He is also a recipient of a 2012 Princess Grace Award for his work at HERE Arts Center (*You Are Dead. You Are Here.* by Christine Evans). He received his MFA in performance and interactive media arts at Brooklyn College and is currently on faculty at University of Maryland, College Park, where he built the projection design curriculum in the MFA design program. Jared grew up in New Hampshire, where he returns every summer as producing artistic director of Andy's Summer Playhouse, an innovative children's theater producing original work by professional artists from across the country.



**ELIZABETH WILLIAMSON** (Co-Director, Dramaturg) is a dramaturg, director and producer who specializes in new work. Recent projects include dramaturging the Broadway and West End productions of *The Inheritance* (Olivier, Critics Circle, Evening Standard, GLAAD, and Drama Desk Awards for Best Play, Outer Critics Circle Honoree), *A Gentleman's Guide to Love and Murder* (Tony Award for Best Musical), and *Anastasia*; directing & adapting *Jane Eyre* (Hartford Stage), dramaturging Bess Wohl's *Make Believe* (Outer Critics Circle Honoree), and directing Sarah Gancher's *Seder* (Hartford Stage.) Williamson has worked around the US and internationally at the Young Vic, Figurateatret I Nordland, Primary Stages, Berkeley Rep, ACT, Cal Shakes, Court Theatre, Steppenwolf, About Face, BAPF, La Jolla Playhouse, Theatre de La Jeune Lune, HERE, Williamstown Theatre Festival, and others. She has served as associate artistic director/director of new play development for both Hartford Stage and Pioneer Theatre Company, commissioning and developing work by Kaneza Schaal, Bess Wohl, Matthew Lopez, Sarah Gancher, Dan O'Brien, Mfoniso Udofia, Octavio Solis, Robert Freedman and Scott Frankel, Terence McNally, Stephen Flaherty and Lynn Ahrens, Brighde Mullins, and many others. She is the 2007 recipient of an NEA Fellowship in Literary Translation. Education: M.St., Oxford University, B.A., Bennington College, trained at the École Jacques Lecoq. Member: SDC, LMDA.

## STAFF

Producing Artistic Director  
**Rob Ruggiero**

Producing Associate  
**Taneisha Duggan**

Director of Marketing/  
Communications  
**Freddie McInerney**

Director of Development  
**Dina Silva**

Audience Administration  
**Joshua Demers**

Technical Director  
**Zachry Pilat**

Stage Manager  
**Kate J. Cudworth**

Assistant Stage Manager/  
Company Manager/  
Wardrobe  
**Cecelia Chapman**

IT Consultant  
**Dean Batchelder**

**2020-2021 Season**  
**twhartford.org**

General Manager  
**Nicole LaFlair Nieves**

Artistic Associate  
**Eric Ort**

Marketing Associate  
**Michael McKiernan**

Development Associate  
**Tingzhu Pan**

Business Associate  
**Chao Sun**

Operations Manager  
**William Farquhar**

Audience Services  
**Sam Bousheé**  
**Gabriel Ruiz**

Assistant Technical Director  
**Sasha Wahl**

Audio-Visual Supervisor  
**Adam Bintz**

Master Electrician  
**Chris Bell**

Resident Designer/  
Design Coordinator  
**Brian Prather**

## BOARD

**Dina Plapler (President)**

**Evan Johnson (Vice President)**

**Daniel O'Connell (Interim Treasurer)**

**Michael A. Martone (Secretary)**

**Jocelyn Fenyn (Asst Secretary)**

**Gerry Lupacchino (Immediate Past President)**

**Michael G. Albano**

**Stacy Brusa**

**Jennifer DiBella**

**Grace Figueredo**

**Gordon Hui**

**Lee G. Kuckro**

**Supriya S. Laknidhi**

**Roberta Prescott**

**Robert Pulito**

**Dennis Russo**

**Larry Samplatsky**

**Marcia Smith**

## TROLL CREW

Audio-Visual Supervisor

Technical Director

Assistant Technical Director

Master Electrician

Props Coordinator

**Adam Bintz**

**Zachry Pilat**

**Alexandra (Sasha) Wahl**

**Chris Bell**

**Brian Prather**



# WHO

## **BRENDA ABBANDANDOLO** (Set and Costume Design)

Theater credits include: *Moby Dick* (ART) *Octet* (Signature), *Continuity* (MTC), *Enemy of the People* (The Guthrie), *I'll Get You Back Again* (Roundhouse), *The Team's*, *Reconstruction*, *The Team's Primer for a Failed Super Power* (Roulette, Brooklyn), *The Royal Family* (The Guthrie), *The Team's Mission Drift* (National Theatre of London), *Bird Shit* (MOMA PS 1), *Strindberg Strindberg* (NYU Grad Acting). Film/TV credits: *An American Pickle* (HBO), *Saturday Night Live* (Associate Costume Designer), *The Disaster Artist* (A24), *The Wolf Hour*, *Like Father* (Netflix), *The Adderall Diaries* (A24), *Tallulah* (Netflix). Brenda holds an MFA in Design for Stage and Film from NYU Tisch School of the Arts.

## **AMITH CHANDRASHAKER** (Lighting Design) Theater

Credits include: *The Underlying Chris* (Second Stage), *Gnit* (TFANA), *Wives* (Playwrights Horizons), *A Human Being*, *Of A Sort* (Williamstown), *The Lucky Ones* (Ars Nova), *Boesman and Lena* (DD & Hewes Award, The Signature), *Blue Ridge* (The Atlantic), *Cardinal* (2ST), *Twelfth Night* (The Public), *Fairview* (Soho Rep, Berkeley Rep, TFANA), *Fire in Dreamland* (The Public), *Her Requiem* (LCT3), *Seven Spots on the Sun* (HH Nom., Rattlestick). Opera: *The Flying Dutchman* (Houston Grand Opera), *Falstaff* (Opera Omaha) *The Scarlet Letter* (Opera Colorado), *Abduction from the Seraglio* (Atlanta Opera). Dance: Premieres by Alexander Ekman, Aszure Barton, Kate Weare, Liz Gerring, Cedar Lake Contemporary Ballet, Rennie Harris, Aalto Ballett Theatre Essen, Staatstheater Nürnberg, The National Dance Company of Wales, and The Royal New Zealand Ballet. Designed The UNTITLED DANCEPARTYSHOWTHING on the inaugural Virgin Voyages cruise ship. Recipient of the Drama Desk and Henry Hewes awards.

**ANDRE PLUESS** (Sound Design and Composition) Projects include the Broadway productions of *Metamorphoses*, *I Am My Own Wife*, *33 Variations* and *The Minutes* as well as the Lincoln Center production of *The Clean House*. His designs/compositions have been featured at regional theaters throughout the country including the Oregon Shakespeare Festival, McCarter Theatre, Center Theatre Group, Seattle Repertory, Yale Repertory Theatre, Arena Stage, Steppenwolf Theatre, the Goodman Theatre, Chicago Shakespeare, Berkeley Repertory Theatre, Williamstown Theatre Festival, LaJolla Playhouse, The Huntington, South Coast Repertory and Playwrights Horizons. He has received numerous awards for composition and sound design including multiple Joseph Jefferson Awards, an Ovation Award, a Barrymore Award, a Lortel Nomination and Drama Critics Circle Award. Based in Chicago, Andre is an ensemble member of Lookingglass Theatre Company.



**ROB RUGGIERO** (Producing Artistic Director) has been part of TheaterWorks Hartford artistic leadership for 26 years. He has directed over 60 shows, including TWH productions of *The Legend of Georgia McBride*, *Constellations*, *Next to Normal*, *Relativity* (starring Richard Dreyfuss) and *Christmas on the Rocks*, which he also conceived. His Broadway



credits include *Looped* (starring Valerie Harper in a Tony-nominated performance) and *High* (starring Kathleen Turner) which had its world premiere at TWH. He also conceived and directed the musical revue *Make Me a Song: The Music of William Finn* which moved off-Broadway and was nominated for Drama Desk and Outer Critics Circle Awards. Rob conceived and directed *Ella*, a musical about Ella Fitzgerald, which saw sold-out runs in 24 regional theaters and was produced as a National Tour. His work on plays and musicals has received multiple awards in Connecticut and around the United States. In his eleventh collaboration with Goodspeed Musicals, Rob directed *Oliver*, where he also directed many award-winning musical productions. His adaptation of *Show Boat* is now being licensed by the Rodgers & Hammerstein Organization. Internationally he directed *Fiddler on the Roof* in Athens, Greece.

**KATE J. CUDWORTH** (Production Stage Manager) has enjoyed seven seasons with **TheaterWorks Hartford** including *American Son*, *The River*, *Hand to God*, *The Invisible Hand*, *The Legend of Georgia McBride*, *The Wolves*, *Fade*, *Next to Normal*, *Sunset Baby*, *Relativity*, *Midsummer*, *Woody Sez*, and *Becoming Dr. Ruth*. Off-Broadway: *Freud's Last Session*, [title of show]. NY/Regional: Barrington Stage Company (8 seasons including *Freud's Last Session*; *Dr. Ruth*, *All The Way*; Joe Iconis' *The Black Suits*), Atlantic Stage Company, Hartford Stage, Manhattan School of Music (4 seasons), Yale Opera, York Theatre Company, Bronx Opera Company, Fringe NYC, NYMF.

---

## THE COLLABORATION

The beauty of American Regional Theater is best embodied when theaters and theatermakers work together to birth a play like **RUSSIAN TROLL FARM: A Workplace Comedy**. Theater is persistent. Sarah Gancher, the playwright, understood that the show had a timely nature - and the visionaries Jared Mezzochi and Elizabeth Williamson saw potential in leaning into the project's world and reimagining the staging of the work as a site specific show - on the internet.

The play thrusts us deep into the wild world of digital communication. We think you will revel in what the project has to offer as we grapple with the art of live theater during a global pandemic. As we are deep into our election season, the play speaks to this moment both from content and form. And most importantly it pushes us to think bigger about the world we inhabit, and how one can shape it for the future.

TheaterWorks Hartford together with TheatreSquared, The Civilians, and our colleagues who have supported this work along the way, are proud to stand at the doorway to the future of our industry hand and hand with these artists. And we stand committed to stories that provoke action.

**THEATER  
WORKS  
HARTFORD**



TheatreSquared

IN ASSOCIATION WITH

**Civilians.**

# SO MANY THANKS

Rachel Sparks  
Marc Keller  
Rick Stinson  
Paula Vogel  
Di Glazer  
Kate Pines  
Robin Budd  
Rachel Chavkin  
Tamila Woodard  
Emily Morse  
Kip Fagan  
John Steber  
Hatlo  
Caitlin Sullivan  
Chisa Hutchinson  
Jade King Carroll  
Libby King  
Aaron Malkin  
Sarah Rose Leonard  
Rory Kulz  
Dina Vovsi  
Erica Shaeffer

## **Play Group 2.0**

Bess Wohl  
Rachel Bonds  
Nick Gandiello  
A Zell Williams  
Brian Otano  
Michael Mitncik  
Stephen Karam  
Josh Koenigsburg  
Sarah Burgess  
Erica Saleh  
Daniel Pearle  
Fia Alvarez  
Max Posner  
Jake Jeppson

The Vineyard  
New Dramatists  
SPACE on Ryder Farm  
Playwrights Realm

## **Bank of America**

Kate Cortesi  
Mfonisa Udofia  
Ken Urban  
MJ Kaufman  
Jihae Park  
Kevin Artigue

Chris Burney  
Liz Carlson  
Tamar Climan  
Mark Coniglio  
Misha Kachman

## **Volunteer Tweeters**

John Bourdeaux  
Jane Coughlin  
Jennifer Carpenter  
Jerry Jensen  
Courtney Jensen  
Andrea Newby  
Becki Zanes  
Michele Sansone  
Jeff Savage  
Chad Jennings  
Ann Wescott  
Gabriel Gonzalez  
Margot Moulton  
Ryan Read  
Modesto Flako Jimenez

## **New York Stage & Film**

TroikaTronix and the creative team for software Isadora  
Childcare support in part from The Playwrights' Realm

---

## THE BACK STORY

After stops at some of the most prolific theater companies and residencies in the country, **Russian Troll Farm: A Workplace Comedy** was slated to have a workshop reading at TheaterWorks Hartford's newWORKS festival in the Spring of 2020. It was postponed due to the lockdown.

In early fall, TheatreSquared (T2) in Arkansas produced a workshop production. Seeing the innovation of the team's work, and stepping into our promise to deliver theater across a digital platform, TheaterWorks Hartford was thrilled to connect with T2 and continue the journey.

**Russian Troll Farm: A Work Place Comedy** received development support from New Dramatists through PlayTime, the Jerry A. Tishman Playwrights Creativity Fund and The Lilly-Ruhl Fund.

## THANKS FOR MAKING THINGS HAPPEN



Hartford  
Foundation  
FOR PUBLIC GIVING

TRAVELERS



GREATER HARTFORD  
ARTS COUNCIL

J. WALTON BISSELL  
FOUNDATION



The Edward C. & Ann T.  
Roberts  
FOUNDATION

Lincoln®  
Financial Foundation



United  
Technologies

THE SHUBERT  
FOUNDATION INC.

TD Bank  
America's Most Convenient Bank®

Connecticut  
*still revolutionary*



The Burry Fredrik Foundation

Cheryl Chase and Stuart Bear Family Foundation

Ensworth Charitable Foundation, Bank of America, N.A., Trustee

John and Kelly Hartman Foundation

The George A. & Grace L. Long Foundation, Bank of America, Co-Trustee

The Saunders Foundation

William and Alice Mortensen Foundation

Richard P. Garmany Fund at the Hartford Foundation for Public Giving

The Elizabeth M. Landon and Harriette M. Landon Charitable Trust

The Katherine K. McLane and Henry R. McLane Charitable Trust

Liberty Bank

People's Bank

The  
Goodwin  
Hartford's boutique hotel

**The Goodwin is the official hotel of TheaterWorks Hartford.**

---

### THERE ARE MANY WAYS TO SHOW YOUR SUPPORT

Gifts of Cash  
Recurring Gifts  
Matching Gifts  
Gifts of Securities  
Planned Gifts

### CONTACT DINA

dina@twhartford.org 860.986.7457

# RENOVATION DONORS

**All donors (from \$5 to \$2.7 million) are listed side by side to celebrate your generosity and collective love of TheaterWorks Hartford  
— we love you right back!**

Gerard I. and Georgia Adelman  
Marla L. and Peter Adelsberger  
Michael G. Albano and Nancy B. Alisberg

Victoria F. and Leonard Albert  
Barbara J. Alex

Joyce H. Allen

P. K. and Phoebe R. Allen

Gregory and Mona Anderson

Rosanne and Stephen Anderson

John M. Andreini

Anonymous (47)

Carolyn Arabolos

Dorothy T. Arnold

John R. and Angela Arrington

Andrew Asensio

Stephen and Judy August

Ann Azevedo and Donato T. DiGenova

James E. and Karen Bachman

Staci Bachman

Ivan A. Backer and Paula Fisher

Barbara Backman

James Bagni

Shawnee Baldwin

Leonard and Elizabeth Banco

Carol and Margaret Barnes

Thomas O. and Melanie A. Barnes

Michael Baron

Ann and Randy Barton

Dr. David M. Bass and Harriet Cutler

Sara J. Batchelder

Paul and Vivian M. Batterson

Lynn Beaulieu and Gerry Lupacchino

Dolph F. and Marjorie Becker

Anthony and Beverley Bellisio

Lee Ann and Claudio Benadiva

Andrew Benator

Ms. Cynthia Bendel Kelly

Diane Bennett

Gary S. and Elizabeth J.T. Berman

Jeanne and Alan Berman

John and Laura Berman

Larry and Jannie Berman

Estelle and Abraham Bernstein

Lynn Bernstein

Harry and Roberta S. Berry

Timothy Bertaccini

John W. Bialobrzewski and Janet

Rooney

Antay Bilgutay and Paul Ditolla

Tom Bloom

Scott Boden and Mary Ayre

Tracy Bodine

Ellen and Russell C. Boehle

Mark Boelhouwer

Terry Bogli

Cathy and Steven Bokoff

R. Kelley Bonn

Chris Borowy

David and Ann Brandwein

Sasha and Jamie Bratt

Joel Brehm and Rodney Dugas

Wanda Broaden

Joan O. Brodeur

Chester and Glenna Brodnicki

The Honorable Luke and Sara Bronin

Karen and Tim Brown

Janet and William Brownstein

James Bruno and William Gratz

Stacy Brusa

Thomas and Margo Burns

Joan and Robert Butler

John\* and Karen K. Byrne

Mary and Ritchard Cable

Marla Campbell

Rise and John Cappadona

Helena and Alvaro Cardoso

Robert and Linda Carlson

Bonnie Caron

Sue Carpenter

Chip Caton and Catherine Lyons

Lynn F. and Jack Cavo

Paul Cestari

John and Peggy Chapman

Lyle and Lois Chapman

Blair Childs

Edward and Tracy Church

Rose Marie Cilia

Ann Clark and David Ehler

Lenora Clark

Susan Clemow

Jonathan E. Clune and Sarah Potter

Douglas Cohen and Phyllis F. Shikora

Holly Cohen

Janice Cohen and Byron Fisher

Dennis Cole

Sue Ann Collins

Len Comeau and Edward Russo\*

James P. Condren and Ellen J.

Robinson

Catherine Conlin

Connecticut Lighting

Audrey Conrad

Susan B. Coogan

Nessie Cormier

Marianne Cornish

Richard Costabile

Wayne H. Coste and Gail Adams

Kayla C. Costenoble

Joseph and Erin Cotier

Jane V. Coughlin and Keith R.

Cudworth

Audrey Courtney

Evan Cowles and Brie Quinby

William Cuddy and Vivien Blackford

Jay M. and Harriet L. Cudrin

Phyllis and Peter Curcio

Richard A. and Aida Cyphers

Etienne M. and Caroline D'Otreppe

Charles Dahlberg

Catherine Daly and Roy Dion

Arnold and Sandy Dashefsky

Emilie and Raul de Brigard

Marjorie and Ronald Debold

Suzanne Delany

Linda Demikat



Thanks for making the dream possible.

Kurtis L. Denison	Friends of TheaterWorks
Mary Alice Dennehy	Nicole and Thomas Fromson
Timothy and Rebecca Derby	Helen and Henry Frye
Design Source CT	Michael and Adrienne Fulco
Jennifer and Marc A. DiBella	William Fuller
Sharon F. and George Dickerman	Francis J. Gagliardi
Heather and Philip Dilorenzo	John Q. and Tracy Gale
Suzanne Carroll Dineen	Jane Gallagher
Martha and James DiTomasso	Barbara Gallo
Dennis and Penny Dix, Jr.	Peter and Melissa Gambardella
Kate and Jon Dixon	Diana Garey and Paul Dolinsky
Michele and John L. Dolan	Richard P. Garmany Fund at HFPG
Gail and Steven Domin	Jennifer Gaudet
TJ Donohue	Annette Gavens
Brooks W. and Paula L. Dorn	The Gawlicki Family Foundation
Michelle and John Drain	Harold and Ava Geetter
John and Anna Drake	Mary and Gary Gello
Susan and Richard Drayton	Charlotte Gemmell
Ann Drinan	Judith Z. Gilligan
Mr. and Mrs. Franklin S. Dubois, Jr.	Carolyn Gimbrone and Robert Bowsza
Linda Dunakin	Fred Gladstone and Laura Berlin
Gerald Dunne	Ellie and Mark W. Goldberg
Nancy Eastlake	Robert and Francine Goldfarb
Sharon and Bob Efron	Felice Goldman
Margot Egan	Arnold and Pat Goldstein
Anne M. Eglinton	Megan and Jay Goldstein
Ms. Mary-Jane Eisen and Robert K. Yass	Firooz and Maria Golkar
Jack and Alice Ellovich	Robert and Lee Goode
Carolyn Emerson	Bob Gordon
David Emmel	Pamela and Barry Gordon
Roberta Enoch	Floyd W. Green, III
David W. Epstein	Dr. Ronald S. and Fonda T. Green
Alice and Tracy Ericson	Peter Grzybala and Diane Korntheuer
Joanne E. Ernest	Denise and Jorge Guerra
Larry and Sarah C. Erwich	Pierre and MaryEllen Guertin
Linda Estabrook	Serene Hackel
Melvin Estrada	Joan Hagan
Richard and Georgia Feigel	Diana Haghighat and Gerardo Gutierrez
Fenmore and Gladys Feigenbaum	Dorothy Hall
Stanley and Susan P. Fellman	John and Susan Hall
Sue Fennelly	Joan Halpert
Jocelyn and Dan Fenyn	Barbara Hamilton
Lillian A. Ferdinand	Kathleen and Robert Hampp
Anthony A. and Anita Ferrante	Susan Hannon
Susan Fierberg and Howard Scheinblum	Beth Ann and Michael Harney
Grace Figueredo and Ken Gostyla	Leo B. and Karen Harrington
Robert and Beth Finnance	Kimberly Harrison
Christine Fisch	Hartford Steam Boiler Company
Kathleen Fitzsimmons	Jane and Rob Harty
Muriel and Karl Fleischmann	Frank Haviland and Shirley Mae Neu
Joyce Flescher	Kimberly Haythorn
Michael Fling	Louise T. Healey
Elinor R. and Herbert Flink	David J. and Lauren D. Henry
Joy M. Floyd	Ronald V. and Patricia Hensley
Thomas Foran	Gina E. Herboldt
Barry and Kim Ford	Stuart Herlands
Joan Fox	Robert B. Hewey and Carol Simpson
Arthur Franklin	Charles and Maria Higgins
Jerry and Ida Franklin	Joy Himmelfarb
Hedley Freake and Elizabeth Huebner	Alden Hobart
Dr. Stephen L. Alloy and Ms. Sharron Freeman	Dale Hodges and David Logan
Dr. Franklin and Joanne Friedman	Jeffrey and Nancy Hoffman
Judith W. Friend	

# RENOVATION DONORS

Maximilian E. and Marion O.  
Hoffman Foundation  
Mark and Kristine Hoffman  
Wilma Hoffman  
Warren Hollister  
Susan Holmes and Bessy Reyna  
David Holmgren  
Kennedy and Jennifer Hudner  
Beverly J. and Richard L. Hughes III  
Gordon and Kelly Hui  
Stephany Hunt  
Bradley and Lisa Hurley  
Dr. Albert and Joan Hurwit  
Brad M. and Jill J. Hutensky  
Douglas and Tita Hyland  
Theodore and Judith Ingis  
Arthur B. and Susan H. Israel  
Mark Izzo  
Beverly Jackowitz  
Sandra Jacobus  
Sharon and David Jepson  
Evan H. Johnson and Kevin Chick  
Judy-Ann Johnson  
Shirley Johnson  
Fellis and Harold Jordan  
Carol and Gerrald Joseloff  
Sandra Justin  
Eva and Michael Kaplan  
Theodore Kaplan and Roberta F.  
Woronow  
Marian Katz  
Robert and Lynn Katz  
Roberta Kaufman  
Marion Kelliher  
Ann F. Kenny  
Judith and Richard T. Keppelman  
Barbara Kiefer  
Robert and Candace K. Killian  
Jennifer and James Kimenker  
Susan A. King  
Susan Kinkade  
David and Jan Klein  
Joel and Naomi Baline Kleinman  
Myra R. and William Kleinman  
Judith Lee Kline  
Don Knapp  
Susan Knapp  
Rosemarie Kochanowsky  
Roza Kogan  
Carol A. Kolp  
Fredrick Kopper  
Ursula G. Korzenik  
Dorri P. and Jonathan Kost  
Dr. and Mrs. Bernard Kosto  
Charles D. and Lois Koteen  
Nancy A. Kramer  
Tammi Kraushaar  
Abbey Kreinik  
Christine C. and Roy Krumperman  
Lee G. Kuckro  
Ms. Laurie and Tom Kyzivat  
Joyce Laccavole  
Annette and Nicole LaFlair  
Ms. Susan Lagassee  
Nancy and Jerry Lahman  
Sid Laibson  
Supriya and Vijay Laknidhi  
Nick LaMedica  
Regina Landesberg  
Susannah Landis  
The Elizabeth M. Landon and  
Harriette M. Landon Charitable  
Foundation  
Carol and Hank Landry  
Gerald Laraia  
Mercedese E. Large  
Christopher Larsen  
The Larsen Fund  
Marcia Lattimore  
Patricia Lavery  
S.K. Lavery  
Ann and Bill Lazarek  
Charles and Joan Leach  
Margaret M. Leake  
Barbara L. Lederer and Laurel  
Hennebury  
Randolph M. Lee  
Sandra Lee  
John W. and Joyce R. Lemega  
Jane Lennox and John Sanzone  
Gary and Debbie Letscher  
Lynnette Letsky-Piombo  
Michael S. and Carolyn W. Levine  
Michael Levinson  
Harlan J. Levy and Patricia Weiss  
Judy Lewis  
Karen Licht  
Julie and Carl Lindquist  
Doreen Linton  
Diane Liska  
Barbara and Bing Liu  
Ted and Adlyn Loewenthal  
George Lombardo  
Frank C. Lord\* and Suzanne M.  
Hopgood  
Peggy Lorence  
Kathleen Lovell  
Elizabeth and Peter Luchina  
Glen MacLeod  
Nancy Macy and Robert Painter  
Kenneth and Cynthia Malm  
Adam and Beth Man  
Lenore Mand  
Linda Manning  
Joseph Marcoux  
Ellen and Jerry Margolis  
Guy and Sharon Marhewka  
Barri R. Marks and Woody Exley  
Kathleen Coville Marr  
Paul Marte  
Mary Martin and Jeff A. Amell  
Juanita Martinez and Frank Torree  
Michael Martone and Jose Fernando  
Zapata Salazar  
Max Cares Restaurant Group  
Jay McAnally  
Dottie McCaughtry  
Judith C. and David L. McChesney  
Joy and Tom\* McConnell  
Esther McCune  
Pat McDougall  
Robert and Linda M. McGurn  
Freddie and Denny McInerney  
Valnere McLean

Thanks for making the dream possible.

Karen N. McNey  
Marilyn and Wayne McPhee  
Marjorie Mead  
Yvette Melendez and Carl Chadburn  
Seymour and Judith G. Melnick  
Deborah J. and Peter L. Meny  
Thomas and Marjorie Michalski  
Mary Miko  
David Miller  
Donald N. and Regina M. Miller  
Elizabeth R. and Stephen Miller  
Kathleen Miller  
Marilyn Miller  
Rachel Miller  
Susan T. and Douglas T. Miller  
Lynne and David Miner  
Sal Modifica  
Brian Molinari and Kristan Pierz  
Michael J. Moran  
Noreen M. and John P. Moreschi  
Ms. Mary Moriarty  
Michael John Morris  
Johanna Morrison  
Pat and Larry Morrison  
Shirley Morrison  
Marjorie E. Morrissey  
Natalie and Joel Morse  
William and Alice Mortensen  
Foundation  
Blanche Moskowitz  
Janet and Harold Moskowitz  
Dr. Theodore F. and Carole Mucha  
Barbara Mulholland  
Karen Murphy  
Robert Murphy and Catherine M.  
Wynne  
Jan Musen  
Richard E. and Paula Musgrave  
Barbie Nadal-Cristofaro and Victor  
Cristofaro  
Ms. Susan Namerow  
Lisa Nappi  
Carolyn Neely  
Wilbur J. and Amy Sevell Nelson  
Willa Nemetz  
Margaret Newton  
Jenifer Noble  
Don Noel  
Jo Nol  
Martha R. and Louis Nunes  
Julia O'Brien  
Daniel and Lori O'Connell  
Dottie O'Meara  
Bill and Joy O'Sullivan  
Linda Obedzinski  
Andre Oberle and Ed Below  
Richard Orr and Cynthia Courtney  
Eric D. Ort and Duff Ashmead  
Roger Ouellette  
Sally and Tom Oxman  
Arthur A. Palmunen  
Harold E. and Lorraine Panciera  
Alan and Jennifer Panecasio  
Jean Partridge  
Jack and Jill Pasanen  
Saul and Joanne Pasternack  
Gerald Pastor and Jane Porterfield

Robert and Margaret Patricelli  
Alex and Mary-Jane Pazda  
Lisa Peake  
Libby S. Pearl  
Penny A. and John E. Pearson  
Ms. Hillary B. Pease and Mr. Robert  
W. Pease  
Jason Peck  
Laura and David Pels  
Ralph Perkins  
Wendy A. Peterson  
Janet Petrowsky  
Dave Pickus  
Theresa Piotrowski  
Joanne Pizzoni  
Dina Plapler and Earl McMahon  
Raphael Podolsky and Jill Mehler  
Michael and Susan Pohlod  
Maryann Poinelli  
Rie Poirier-Campbell and Michael  
Campbell  
Matthew K. Poland  
Leslie Pollack  
Susan Pollard  
Will Prenetta  
Roberta W. Prescott and Robert O.  
Hurwitz  
Bob and Patti Pulito  
Christine W. Quartiero  
William and Ruth E. Rabinowitz  
David T. and Amy Raccagni  
Ettore C. and Laura Raccagni  
Anita and Monty Rackow  
Theresa Rebeck  
Joan and Allan B. Reiskin  
William Reitman  
Janet and Peter Reynolds  
Margaret and Charles Rich  
Joan and Barry Richter  
Margaret Rick  
Drs. Michael Lustick and Barbara  
Rickler  
Clara and Joseph Riley  
Margaret Riley  
Christina and Ezra Ripple  
Scott R. Ritter  
Joann Roberts  
Nancy and Stephen Roberts  
Robinson and Cole  
Marytherese and John Rodis  
Alice B. and Robert Rodner  
Thomas Ronalter  
Harriet and Leo Rosen  
Steve Rosenberger  
Sari and Jim Rosokoff  
Charles L. and Barbara Ross  
Nina C. and Duccio Rosselli Del Turco  
Rosalie B. Roth  
Dr. Anne Rothstein and Jane Hellman  
Joel and Susan Rottner  
Henry Ruggiero  
Rob Ruggiero  
Sandra H. and Marshall Rulnick  
Mary Beth Russell  
Dennis Russo  
William Goba and Joan  
Russoniello-Goba

# RENOVATION DONORS

Deborah and Michael Sacks  
Jennifer and Christian Sager  
James M. Salemi and Kenneth J. Bartschi  
James J. and Patricia A. Salvador  
Larry Samplatsky and John Tackus  
Dency C. Sargent and Bob Sawyer  
Saraellen and Tom Sargent  
John Scandura  
Lenore Schack  
Cora Sue and Bing Scherer  
John J. and Suzanne D. Schloss  
Ralph D. and Louise Schmoll  
Jonathan and Sherry Schreiber  
Kristofer Schumacher  
Arthur N. and Toby A. Schuman  
Ms. Marcie B. Schwartz and James Calciano  
Fred Scribner  
Sharon and Lynn Scull  
Chris Scully  
John Scully and David Osella  
Patricia A. Scully  
Linda Scussel  
Bernie Selig  
Andrew and Karen Serio  
Elizabeth and Stephen J. Shamroth  
Richard M. and Cyral A. Sheldon  
Amy and Arthur Sher  
Maryanne B. Shinn  
Debbie and Jim Shmerling  
Ronit and Scott Shoham  
Joseph Shortall and Sara Bernstein  
Shortell Framing  
Penny and Steve Sigal  
Thaddeus and Mary Sikora  
Mr. Fred Silbermann  
Dina Silva  
Darlene C. and Guy A. Simonian  
Valerie M. and John Siraco  
Carol L. Sirot Foundation  
Jen and Kenneth Siskind  
Ellen Siuta  
Mark Slitt  
SLAM Collaborative  
Helen and Nelson Sly  
Gilbert and Ruth L. Small  
Leslie Smith and Philip Wellman  
Kevin and Marcia Smith  
Shirley Smith  
Sue W. and Richard K. Smith  
Ruth and Howard Sovronsky  
Tara Spain  
Lori and Brian Sparks  
Mary C. Spellacy  
Deborah L. Spencer  
Catherine J. Spera  
Linda C. and John Spevacek  
Reg Springer  
Karin A. Stahl  
Glenn Stanisewski  
Lawrence Starr  
State of Connecticut Economic and Community Development  
Sondra Astor Stave  
Scott and Jane Stearns  
Barbara and Leon Stechenberg  
Sandra Stein

Marilyn S. Steinmetz  
Ellen and Andrew Stokoe  
Shepard and Marlene Stone  
Donna M. and Sam Stout  
Mervyn Strauss  
Nancy Stuart and David Lang  
Ms. Janet Stulting  
Jack and Mary Anne Sullivan  
James G. and Marcia E. Sutton  
Deborah R. Szajnberg  
Robert H. Tabshey  
Rosemarie and Harry Tamiso  
Jerry and Eve Tarre  
John and Barbara Taussig  
Allan B. and Sally S. Taylor  
Montell and Anjanette Taylor  
Samuel H. and Joan Teller  
Jeff Rudikoff and Edee Tenser  
Lavell Thompson  
Leonora and Bill Thramann  
Christine Tobin  
Karen Tomasko and Robert Goodman  
Humphrey Tonkin and Jane Edwards  
Denise Trammel  
Travelers  
Ruth Treat  
Eleanor Udolf  
Harriet Unger  
Michelle J. Vadenais  
Fran and Brian Van Linda  
Cecily C. Vasington  
Hope W. Vath  
Donna Vickers  
Anthony Vignone  
Dan Violante  
Karen and Jack Volinski  
Ric Waldman  
Laura and Matthew Wallace  
Theresa and David\* Waltz  
Diane M. Ward  
Luther G. and Denise M. Weeks  
Barry Weinstein  
Betty and Alan Weintraub  
Carolyn Weiser  
Judith and Joel Weisman  
Florence Wendell  
John Wentland  
Reeves Westmoreland  
Robert and Penelope Whalen  
Edward and Brooke Whittemore  
Louise Wilder  
Martha and Donald Wilmot  
Andrea Wilson  
Brad Witte and Deborah Slater  
Virginia Wolf  
Elizabeth B. Woodard  
The Zachs Family Foundation  
Barbara Zakarian  
Carol K. Zapadka  
Joan Zawacki  
Mary Zeman  
Peter M. and Ellen T. Zeman  
Joseph Zepperi  
Liz and Richard Zlatkus  
Stephanie and David Zomick, M.D.  
Elliot Zweig and Doreen Fundiller-Zweig

\*deceased



# ANNUAL FUND DONORS

## PLATINUM PARTNERS

Gifts of \$25,000+

Jeffrey and Nancy Hoffman  
David Holmgren  
LAZ Parking  
Dennis Russo and WondriskaRusso  
Theresa Waltz

---

## GOLD PARTNERS

Gifts of \$10,000+

Lynn Beaulieu and Gerry Lupacchino  
Common Sense Fund  
Mark Boelhouver  
Helen and Henry Frye  
Robert and Francine Goldfarb  
Ted and Adlyn Loewenthal  
Marjorie E. Morrissey  
Richard E. and Paula Musgrave  
Thomas W. and Emily B. Nissley

---

## SILVER PARTNERS

Gifts of \$5,000+

Duff Ashmead  
Ted and Kathy Fleming  
The Gryphon Fund  
Brad M. and Jill J. Hutensky  
Joy and Tom\* McConnell  
Jacqueline and Dave Mott  
Lanny Nagler and Lanny Nagler Photography  
Alicia Roncari and Bin228  
Larry Samplatsky and John Tackus  
Jonathan and Sherry Schreiber  
Kevin and Marcia Smith  
The Zachs Family Foundation

---

## BRONZE PARTNERS

Gifts of \$2,500+

Cynthia Bates and Jonathan Russell  
Stacy Brusa  
The Gawlicki Family Foundation  
Irving L. Gilman Family Charitable Foundation  
William Knight and Jill Adams  
Lee G. Kuckro  
Michael and Jo-Ann Price  
Rob Ruggiero  
James M. Salemi and Kenneth J. Bartschi  
Michael Wilder

---

## LEADING DONORS

Gifts of \$1,000+

Michael G. Albano and Nancy B.  
Alisberg  
Anonymous (4)  
Ivan A. Backer and Paula Fisher  
Thomas O. and Melanie A. Barnes  
Julie A. Brogan and Christopher A.  
Uhrich  
James Bruno and William Gratz  
John\* and Karen K. Byrne

Ann M. Catino  
Alison and Tony Caxide  
Amy Charney and Lewis K. Wise  
James N. and Amy Jane Cohen  
Sue Ann Collins  
Richard A. and Aida Cyphers  
Melissa J. Taylor-Doyle and Chris  
Doyle  
Jack and Alice Ellovich

# ANNUAL FUND DONORS

## LEADING DONORS

continued

Gifts of \$1,000+

The Fechter Family Fund	Leta W. Marks
Jocelyn and Dan Fenyn	Sheila Marks
Grace Figueredo and Ken Gostyla	Peggy and Alan Mendelson
Muriel and Karl Fleischmann	Daniel and Lori O'Connell
Catherine Franks	Gerald Pastor and Jane Porterfield
William Fuller	Dina Plapler and Earl McMahon
Robert and Lee Goode	Matthew K. Poland
William T. Gough and Mary J. Cook	Roberta W. Prescott and Robert O.
Peter Grzybala and Diane Korntheuer	Hurwitz
Laura Harris	Bob and Patti Pulito
Brian E. Harvey and Sherry A.	Elenor G. Reid
Manetta	Joan and Allan B. Reiskin
Suzanne M. Hopgood and	Martey S. Rhine
Frank C. Lord*	Christina and Ezra Ripple
Gordon and Kelly Hui	Elaine Sayadoff
Douglas and Tita Hyland	Amy Lynn Silverman
Sharon and David Jepson	Tara Spain
David and Jan Klein	Robert Stillman and Leslie Fass
Dr. and Mrs. Bernard Kosto	Donna M. and Sam Stout
Supriya and Vijay Laknidhi	Thomas and Donna Swarr
Wally and Chris Lamb	Robert H. Tabshey
Katherine J. Lambert	Tapper Charitable Foundation
Sarah Larkins	Allan B. and Sally S. Taylor
Judy Lewis	Mara A. Whitman and Marc
Steve and Sheila Litchfield	Edrich
David T. and Judith W. Macri	Edward and Brooke Whittemore
Kenneth and Cynthia Malm	

---

## LOYAL SUPPORTERS

Gifts of \$250+

Cynthia L. Abrams	Paul and Joanne Bourdeau
Acorn-Alcinda Foundation	George Bouthet
Doug and Sheryl Adkins	Anne and Bruce Bowman
Victoria F. and Leonard Albert	Whitney Boynton and Kevin Galvin
P. K. and Phoebe R. Allen	Mary Bozza
Lois and Bruce Anderson	Kathleen Bradley
Karin and Peter Fester	Lucy Brakonietcki
Mr. Peter Arakas and Ms. Karen	Todd Brandt
Kellerman	David and Ann Brandwein
Joyce and Richard Armstrong	Nicole Braun
John R. and Angela Arrington	Bill and Sheryl Breetz
Stephen and Judy August	Joel Brehm and Rodney Dugas
Kandyce M. and Richard T. Aust	Glen and Joyce Breland
Ann Azevedo and Donato T. DiGenova	James P. and Patricia G. Brennan
Lynn Baccaro	James and Riki Brodey
Staci Bachman	Kathy Brookman
Pierre and Kate Barbour	James L. Brother and Margie Helme-
Donna and Thomas R. Barnas	Brother
David S. and Jill P. Barrett	Ellen M. Brown
Ann and Randy Barton	Karen and Tim Brown
Edwin L. and Edith G. Baum	Sandra and Kevin Brown
Anthony and Beverley Bellisio	Avery and Eileen Buell
Laura and Jerry Bellizzi	Richard and Mary Burke
Larry and Jannie Berman	Mary and Ritchard Cable
Leon P. Bernard and Richard Fitol	Diane Cadrain and Joseph Rubin
Jon D. and Cheryl Bertus	Shari and Michael Cantor
Barbara and Jack Blechner	Blanche M. Capilos and David Biklen
Avrum H. and Edlyn R. Blitzer	Lisa Casey
Kenneth and Katherine Bobenski	Chip Caton and Catherine Lyons
Scott Boden and Mary Ayre	Jane Chafe-Moote
Michael Boratko	Michael Champness
Judy Borus	Susan R. Chandler

**LOYAL SUPPORTERS**

Gifts of \$250+

continued

Jared Chase	Erika Forte
Catherine and Brad Chhabra	Chantal Foster
Edward and Tracy Church	Mary-Jane Foster
Ann Clark and David Ehler	C. Joseph and Beth Fox
Jonathan Clark	Jerry and Ida Franklin
Jennifer Coffey	Meghan Freed
David and Doris Cohen	Harry and Cay Freeman
Douglas Cohen and Phyllis F. Shikora	Dr. Stephen L. Alloy and Ms. Sharron Freeman
Linda F. Cohen	Neal B. Freuden and Andrea F. Levy
Steven and Elaine Cohen	Timothy A. and Roxane M. Fromson
Abby Cole	David and Renee Frost
Philip and Clio Coles	Michael and Adrienne Fulco
Donna Collins	Elizabeth Gagne
Connecticut Convention & Sports Bureau	Rachel Galligan
Denise Cormier	Peter and Melissa Gambardella
Amy Costa	Marilda Gandara and Scott O'Keefe
Linda and Fred Cote	Robert Garrey
Joseph and Erin Cotier	Tom and Cynthia Garten
Jane V. Coughlin and Keith R. Cudworth	Harold and Ava Geetter
Stephen and Suzanne Couture	Elaine Geha and Fred Brownstein
James and Sheryll-Ann Covill	Ken and Jennifer Geisler
Evan Cowles and Brie Quinby	Peggy Ginden
Charles Crocini	Raymond and Barbara Girard
William Cuddy and Vivien Blackford	Robert V. and Jean Giunta
Jay M. and Harriet L. Cudrin	Beverly and Abraham Glassman
Marc and Karyn d'Avignon	Catherine Godin
Janice Dabate	Alice and Gary Gold
Catherine Daly and Roy Dion	Felice Goldman
JD Daw	Linda and Ira Goldman
Kurtis L. Denison	Megan and Jay Goldstein
Timothy and Rebecca Derby	Firooz and Maria Golkar
Susan and John Dewolf	Laurel Goodgion
Jennifer and Marc A. DiBella	Ann C. Gowdey and Dr. Bruce A. Backus
Michele and John L. Dolan	Cate Grady-Benson
Gail A. Donahue	Pamela and Timothy Granucci
Kim Dorfman	Daniel G. Green and Walter Langner
Hollis Dorman	Floyd W. Green, III
Ivy and Jim Doyle	Albert and Judith Greenspoon
Michelle and John Drain	Martha Griffin
Frederick A. and Bebe Dudley	Elizabeth and Richard J. Gruber
Susan and Ned P. Dunn	Pierre and MaryEllen Guertin
Marian Dziama and Karen Cormier	Robyn Guimont
Josephine Dzioba	Vivian Haas
Dr. Barbara Edelstein	Frank Hagaman
Sharon and Bob Efron	Diana Haghighat and Gerardo Gutierrez
Ms. Mary-Jane Eisen and Robert K. Yass	Elisa Hale and Donald Grove
Diane Ellsworth	John and Marian Hanson
Carolyn Emerson	William and Marsha Harbison
Susan Engel	Patricia Hartman and Michelle St. Marie
Wendy and Richard Fair	Nanci and Andrew Harvey
William and Joan Farquhar	Neil and Roxy Hassett
Ann and Michael Feinberg	Rozanne Hauser and Louis Mazzotta
Dr. Edward J. and Mrs. Sherry S. Feinglass	Frank Haviland and Shirley Mae Neu
Stanley and Susan P. Fellman	Angeline Hein
Barbara and Ted Fichtenholtz	David J. and Lauren D. Henry
Susan Fierberg and Howard Scheinblum	Ronald V. and Patricia Hensley
Daniel and Joan S. Fine	Charles J. and Karen Herbert
Robert and Beth Finnance	Debbie Hersh
Michael and Martha Flannery	Maureen Hesney
Elinor R. and Herbert Flink	Robert B. Hewey and Carol Simpson
F. Bernard Forand and Sandra Wood Forand	Robert and Colleen Hilliard
Jane M. and Ralph Formica	

# ANNUAL FUND DONORS

continued

Cathy Hitchcock  
Alden Hobart  
Elisabeth Holder  
Warren Hollister  
Susan Holmes and Bessy Reyna  
Marianne Horn  
Kennedy and Jennifer Hudner  
Dorinda Hultgren  
Polly Huntington  
Linda Jainchill  
Molly James  
Keats and Joseph Jarmon  
Evan H. Johnson and Kevin Chick  
George and Janet Jones  
Fellis and Harold Jordan  
Jeanne Kaiser  
Daniel J. and Lori Kase  
John and Dorothy Kaszycki  
Harriet R. and I. William Katz  
Alan and Carolyn Kaufman  
Karen Kelleher\*  
Marian Kellner  
Patty and Steve Kelmar  
Hilda and Arthur Kesten  
Donna M. Kidwell  
Jennifer and James Kimenker  
Kitchen and Bath Design Construction  
Myra R. and William Kleinman  
Mark F. and Carolyn J. Korber  
David J. and Ruth Krugman  
Christine C. and Roy Krumperman  
Linda Lamothe  
Valerie A. LaMotte  
Sheena Landfear  
Susannah Landis  
Marilou and Mike Lang  
Janet Lapierre-Green  
Andrea Laplace  
Paula Larocco  
Marcia Lattimore  
Ann and Bill Lazarek  
Laurie Leader  
Elizabeth Leete  
Dawn Leger  
William and Deanna Leikin  
John W. and Joyce R. Lemega  
Michael S. and Carolyn W. Levine  
Michael Levinson  
Sandra P. Lewis  
Lorraine Libby  
Karen Licht  
Doreen Linton  
Barbara and Bing Liu  
Philip and Sharen Lom  
Judith Loopstok  
Peggy Lorence  
Jennifer and Richard Lotstein  
Elaine Lowengard  
Jia Luo and Michael Monts  
Kevin M. and Denise Lynch  
Patty and William Mace  
Glen MacLeod  
Ron and Laura Maggio  
Stacy Mandelker  
Robert and Terri Mansfield  
Guy and Sharon Marhewka  
Eileen M. Marks and Ed Mikolowsky  
Mary Martin and Jeff A. Amell  
Michael Martone and Jose Fernando  
Zapata Salazar  
Alan and Claudette Marvelli  
Fran Mayer and David Weill  
Betsy McAleer  
Erin McGurk  
Joe Ann and Samuel McKay  
Tara Trifon and Matthew Metnetsky  
Thomas and Marjorie Michalski  
Francoise and Hans Miller  
Kathleen Miller  
Dr. M. Stephen and Miriam Miller  
Rachel Miller  
David Miner and Stephanie Robiner  
Ann and Gregory Mittelmann  
Susan Monks and Mary-Ann McNamara  
Robert and Stephanie Moore  
James and Joanne Morgan  
Jean Moriarty  
Pat and Larry Morrison  
Dr. Theodore F. and Carole Mucha  
Jan and Ken Musen  
Barbie Nadal-Cristofaro and Victor  
Cristofaro  
Phyllis and Don Naples  
Donna and Jack Nash  
Danielle K. and Jim Naylor  
Carolyn Neely  
Leigh Newman and Gary Starr  
Maureen Nicholson  
Kathy and Walter Nicksa  
Jenifer Noble  
Don Noel  
Wil Noel  
Christiane Noll  
Robert D. Norman and Laura Craco  
Sean and Paula O'Brien  
Eileen O'Donnell  
Bill and Joy O'Sullivan  
Tracey O'Brien  
Harriet Odum  
William S. Okeson and Beverly Sims  
Michelle and Sam Oliva  
Richard Orr and Cynthia Courtney  
Joseph Pace  
Vittoria Pace  
Kathi and Andy Packer  
Ann D. and Borden W. Painter, Jr.  
Scott and Susanne Pape  
Alan and Michele Parker  
Marlene Passman  
Penny A. and John E. Pearson  
Ginny Perkins  
Ralph Perkins  
Gail and Michael Perlman  
Maryjane Perrier  
Charles and Jean Pickens  
Sarajane and Barry Pickett  
Dave Pickus  
Daria and Peter Plummer



continued

Jack and Lynn Plummer	Barbara Sicherman
Leslie Pollack	Penny and Steve Sigal
Abbi and Vinny Pollicita	Irene E. and Allen B. Silberstein
Frances Porter	Dina Silva
Sandra and George Pruce	Bruce and Sandra Simonds
Anita and Monty Rackow	Irene Simone
Marion and Seth Radeen	Darlene C. and Guy A. Simonian
Jo-Anne Rankin and John Williams	Douglas and Roberta Simpson
Susan Rathgeber	Ellen Siuta
Ann Reed	Richard and Raimi Slater
Patricia and Edgar Reed	Mark Slitt
Alvin B. Reiner	Gilbert and Ruth L. Small
Margaret and Charles Rich	Phyllis and Howard Small
Joan and Barry Richter	Leslie Smith and Philip Wellman
Ms. Annemarie H. Riemer	Mary A. and William H. Smyers
Judith Rifkin	Shari and Howard Solon
Nancy and Stephen Roberts	Ruth and Howard Sovronsky
Deborah Roncari	Deborah L. Spencer
Chris and Kathleen Rohrs	Catherine J. Spera
William Rosedale	Ernest H. Spieler
June Rosen	Felix J. and Helene L. Springer
Barbara J. and Alan Rosenberg	Anne E. Stanback and Charlotte M. Kinlock
Michele Rosenberg	Glenn Stanisewski
Monica and Cliff Rosenberg	Lawrence Starr
June M. Rosenblatt	Scott and Jane Stearns
David and Jane Rosenfield	Dot and George Stone
Joanna and Eric Rosenthal	Ms. Janet Stulting
Sari and Jim Rosokoff	James G. and Marcia E. Sutton
Enid M. Ross	Patricia Tanger and Ken Rawolle
Marjorie Ross	Jerry and Eve Tarre
Donald and Nancy Rossler	Rae and Margery Tattenbaum-Fine
Dr. Anne Rothstein and Jane Hellman	John and Barbara Taussig
Joel and Susan Rottner	Allan B. and Sally S. Taylor
Barbara Rubin	The Betty Knox Foundation
Barbara Rudnick	Townsend Thomas
Steven Russo and Elizabeth Christie	Jeffrey R. and Laurie Tishler
William Goba and Joan Russoniello- Goba	Karen Tomasko and Robert Goodman
Alan and Jan Rust	Humphrey Tonkin and Jane Edwards
Jennifer and Christian Sager	Dan and Janet Tracy
Linda M. Samonick	Sally F. and Thomas Tresselt
Martha Sandefer and Frederick Sweitzer	Roberta Tyska
Dency C. Sargent and Bob Sawyer	Douglas and Mildred Unfried
Carolyn and Frank Sataline	Gary and Pam Vollinger
Meg Sautter	James and Kay Wade
Guthrie Sayen and Patricia Barone	Laura and Matthew Wallace
Bernice Schaefer	Ann Wassell
Susan Schenker	Carolyn Weiser
John J. and Suzanne D. Schloss	Veronika Westbrook
Ralph D. and Louise Schmoll	Reeves Westmoreland*
Malcolm and Sally Schneider	Robert and Penelope Whalen
Linda Scussel	Dan and Isabelle Whelton
Pedro Segarra and Charlie Ortiz	Gretchen H. Wiedie
Eileen Seiger	Sherwood S. and Magrieta L. Willard
Leon H. and Brenda Seitelman	Carolyn and Paul Wilson
Bernie Selig	Virginia Wolf
Judith and Gerard Selzer	Arnold and Myrna Wyse
Andrew and Karen Serio	Joann Zamparo
Candance J. and William Shanahan	Mary Zeman
Melissa Sheffy Household	Amy Zittoun
Robert Shepler	Liz and Richard Zlatkus
Julie W. and Steven Shifreen	Margaret Zorn
Joseph Shortall and Sara Bernstein	Shari Zwick
Shortell Framing	

\*deceased