

THEATER
WORKS
HARTFORD

POWER. CLASS. SURVIVAL.

QUEEN OF BASEL

by HILARY BETTIS

directed by CRISTINA ANGELES



Feb 3-26



From the Director

There's a lot I could say about this play, about the people who've made it, about the telling of Latine stories or lack thereof, about making theater during a global pandemic but, for now, I'll say this:

It's a rare thing to get to make theater, and even rarer to tell stories about your people, with your people. For a long time, there's been a limit set on the kinds of Latine stories deemed producible on American stages, and theaters across the country have only just scratched the surface of the work Latine artists have to offer.

Thanks to Hilary Bettis' brilliance, QUEEN OF BASEL gives us an opportunity, not to define what it means to be Latine, but to shed light on the multitudes we contain as a people. We exist across different races, we come from different countries, we speak different languages, and every part of us deserves to be seen, even the parts of us we're less proud of.

And so, in honor of the Latine artists that came before us, and to the many that will come after: Continuamos pa'lante. Siempre, pa'lante.

Hay mucho que quisiera decir sobre esta obra, sobre los artistas involucrados, sobre las oportunidades de contar nuestras historias, y sobre hacer teatro durante una pandemia global, pero por ahora, voy a decir esto:

Es poco común tener la oportunidad de hacer teatro con mi gente. Por mucho tiempo, se ha limitado el tipo de historias Latines que se han presentado en los teatros estadounidenses, y apenas hemos tocado la punta del iceberg sobre las historias Latines.

Gracias al genio de Hilary Bettis, tenemos la oportunidad de no sólo definir lo que significa ser Latine, sino también sacar a la luz nuestras multitudes. Los Latines existimos en diversidad de razas, países, idiomas, los cuales merecen poner en escena, incluso las partes imperfectas de nosotros.

Gracias a los artistas Latines que estuvieron antes de nosotros, y pensando en los muchos por venir: Que continuamos pa'lante. Siempre pa'lante.

– **Cristina Angeles**

twhartford.org



#QueenOfBasel



#theaterworkshartford

#twh

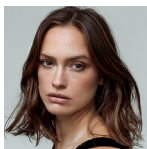


#twhartford

QUEEN OF BASEL

by **HILARY BETTIS**
directed by **CRISTINA ANGELES†**

THE CAST (in order of appearance)



Julie



Christine



John

CHRISTINE SPANG*

SILVIA DIONICIO*

KELVIN GRULLON*

December in Miami during Art Basel. Now.

Set Design	RODRIGO ESCALANTE
Costume Design	HARRY NADAL
Lighting Design	EMMA DEANE
Sound Design	GERMÁN MARTÍNEZ
Assoc. Sound Design	IRIS MARCELINA ZACARÍAS
Dialect Coach	CYNTHIA SANTOS DECURE
Intimacy Director	LAUREN KIELE DELEON
Assistant Director	REBECCA MAY RISTOW
Casting Director	X CASTING/VICTOR VAZQUEZ, CSA
Stage Manager	NICOLE WIEGERT*

QUEEN OF BASEL was originally produced by Studio Theatre, Washington, DC (David Muse Artistic Director, Rebecca Ende Lichtenberg, Managing Director), in May 2019.

QUEEN OF BASEL was conceived, commissioned and developed by Miami New Drama Presented by Miami New Drama, April-May 2018

Michel Hausmann-Artistic Director,
Olga Granda-Executive Director, Lisa Dozier King-Producing Director

† Member of SDC, Stage Directors and Choreographers Society.

*Appearing through an agreement between this theater and Actors' Equity Association, the Union of Professional Actors and Stage Managers in the United States.

TheaterWorks Hartford is celebrating its 37th season as a non-profit, professional theater company. Founded in 1985.

QUEEN OF BASEL is the 2nd show of the 2022-2023 Season.

TheaterWorks Hartford • 233 Pearl Street • Hartford, CT 06103 • 2023

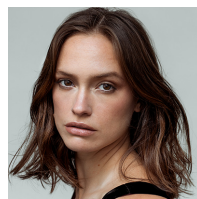
WHO



SILVIA DIONICIO (Christine) is excited to make her TheaterWorks Hartford debut as Christine. In 2016, the Dominican government granted her a unique scholarship to study acting in New York City. Since, she's performed all around the country, including in the Off-Broadway shows: *Fandango for Butterflies (and Coyotes)* (La Jolla Playhouse/La MaMa), *Black Panther Women* (NYTW), *The Last Jew of Boyle Heights* (Actors Temple Theatre), *I & You* (Bristol Riverside) among others. Dionicio is quickly making a name for herself on Film/TV with a recurring role in *Chicago PD* (NBC), and supporting roles in *Legacy* (Sundance), *New Amsterdam* (NBC), *Wu-Tang: An American Saga* (Hulu), *Grave's Mysteries* (ID), and *In Pursuit* (TLC).



KELVIN GRULLON (John) is making his TheaterWorks Hartford debut. He is a Dominican American actor from Washington Heights with a passion for storytelling, often working as an actor, filmmaker, producer, spoken word performer, and DJ under the moniker CHICO BEMBÉ. Projects include theater (*She Hates Coffee*, *Room28 Comedy*), film (*La Tierra*, *No More Lonely People*), voice over (*Corner Wolves*, *Michelle Rojas Is Not Okay*), and new media works (*Guap*, *DominicanYork*).



CHRISTINE SPANG (Julie) is making her TheaterWorks Hartford debut. New York Theater: *Anna in the Tropics* (Bay Street Theatre), *Lucky* (Off-Broadway, 59E59), *The Drunken City* (Kraime Theatre). Film: *The Zombie Wedding*, *Wicked Games*, *Out of Breath*, *The Light of the Moon*, *Fort Tilden* (SXSW Grand Jury Award, Narrative Feature). Television: *Lucy* on HBO's *Succession*, *FBI: Most Wanted*, *Law & Order: SVU*, *The Changeling*, *Love Life*, *Lisey's Story*, *The Blacklist* and *When They See Us*. Love and gratitude for my family, friends, and my team.



HILARY BETTIS (Playwright) is a critically-acclaimed playwright whose work has been developed and produced all over the country, including Roundabout Theatre, New Georges, The Sol Project, Miami New Drama, Studio Theatre, Alley Theatre, New York Theatre Workshop, La Jolla Playhouse, amongst others. Accolades include Egerton Foundation New Play Awards, National Endowment for the Arts Grant, and a finalist for the Blackburn Prize, Kendeda Award, Nuestras Voces National Playwriting Competition, American Blues Theater's Blue Ink Award, amongst others. In television Bettis won the 2019 Writer's Guild of America Award for her work on the critically acclaimed Golden Globe and Emmy Award winning FX series *The Americans*. She wrote for the Hulu miniseries *The Dropout*, starring Amanda Seyfried, and Amazon's *Rodeo Queens*. She's an alum of the Sundance Institute Episodic TV Lab, and is developing projects for AMC, Hulu, and PatMa. She's a graduate of The Juilliard School. Proud member of The Kilroys and WGA East. She lives in Brooklyn, NY with her husband, two cats, and two tiny tiny humans that cry a lot. She is represented by CAA and Grandview. hilarybettiswriter.com



CRISTINA ANGELES (Director) is an Afrolatina director, writer, and theater maker who develops new plays, musicals, and socially conscious adaptations of classics that place women of color at the forefront. She has been awarded the 20-21 Drama League Directing Fellowship, the 19-20 Roundabout Directing Fellowship,



and has been an associate director on and off Broadway. Today, Cristina is an Associate Artist at Roundabout Theatre Company and the Founding Artistic Director of Checkmark Productions, an NYC based company dedicated to artists of color and their stories. Recent credits include *Into The Woods* (Pace University), Suzan-Lori Parks' *In The Blood* (NYU's Tisch) and overseeing the national tour of Charles Fuller's *A Soldier's Play* directed by Kenny Leon. Up next, Cristina will be directing Sophocles's *Antigone*, translated by Anne Carson, at Pace University. cristinaangeles.com



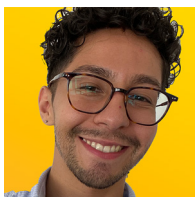
RODRIGO ESCALANTE (Set Design) is originally from El Salvador and is a New York City based designer. Recent and upcoming work has been seen at American Stage, The New School, Waterwell Theatre, Great River Shakespeare Festival, Opera House Arts, Cape Fear Regional Theatre, Barnard College, among others. Rodrigo is a graduate of the Savannah College of Art and Design. For more on his wide variety of work visit rodrigoescalante.com



HARRY NADAL (Costume Design) is originally from San Juan, Puerto Rico. **TheaterWorks Hartford:** numerous productions during the last 12 years. Most recently, *Zoey's Perfect Wedding* (CT Critics Circle Award nomination), *The Invisible Hand* and *Fade*. **NEW YORK:** Lincoln Center Institute, Atlantic Theater Co., Brooklyn Academy of Music, Labyrinth Theater Company, Juilliard, Intar, WP Theater, Pregones/PRTT, Here Arts Center and Theater for the New City among others. **REGIONAL:** Arena Stage (Washington, DC), Chicago Opera Theater, Des Moines Metro Opera, Zach Theatre (Austin, TX), George Street Playhouse (New Brunswick, NJ), UrbanArias (Arlington, VA), Baltimore Center Stage, Boise Contemporary Theater, People's Light (Malvern, PA), Open Stage (Harrisburg, PA) and Bloomsburg Theatre Ensemble, among many others. Faculty member at Pratt Institute's Film School. MFA: New York University, Tisch School of the Arts. harrynadal.com



EMMA DEANE (Lighting Design) is an Indigenous lighting designer based out of NYC, and a citizen of the Mandan, Hidatsa and Arikara Nation. Recent credits include *Confederates* (Signature Theatre NYC), *Three Sisters*, *Much Ado About Nothing* (Two River Theater), *BAKKHAI* (Baltimore Center Stage), *Jane Eyre* (Geva Theatre Center), *In the Southern Breeze* (Rattlestick Playwrights Theater), *Manahatta* (Yale Repertory Theater), *Tiny Beautiful Things* (TheatreSquared) and associate lighting design on *Dreaming Zenzile* (NYTW, St. Louis Rep). Other credits include work with Lincoln Center Theater, Yale School of Drama, Yale Cabaret, Filament Theatre, Interrobang Theatre Project, The Fisher Center at Bard, Court Theatre, The Goodman, Albany Park Theater Project, Steppenwolf Theater Company, Northlight Theatre and Chicago Shakespeare Theater. MFA - Yale School of Drama. USA 829.



GERMÁN MARTÍNEZ (Sound Design) a proud son of immigrant parents, is a NYC/NJ based Sound Designer. Germán is a Montclair State University alum (2018), and is the current Eastern Representative for the TSDCA (Theatrical Sound Designer and Composers Association). His designs have been featured at: Women's Project, Williamstown Theatre Festival, MCC, American Repertory Theatre, Repertorio Español, GALA

WHO

Hispanic, George Street Playhouse, Two River Theater, and Trinity Rep. Broadway credits include working on: *Into The Woods*, *The Piano Lesson*, and *Ohio State Murders*. As a designer, he seeks work that will uplift and support BIPOC, queer, and immigrant stories in innovative and beautiful ways. Germán calls this work "art from the heart." He invites any like-minded artists to collaborate. You can keep up with his work on Instagram: @GermanTheSoundDesigner.



LAUREN KIELE DELEON (Intimacy Director) is an American-Uruguayan intimacy professional from Miami. She holds a Master's degree from NYU with a thesis on "Decolonizing Touch through Intimacy Choreography," is a professor of Intimacy in Performance at Sarah Lawrence College, and is a teaching artist and the Director of Community

Education & Engagement at Intimacy Directors and Coordinators (IDC). Off Broadway: *Eva Luna* (Repertorio Espanol), *La Conducta de la Vida* (Repertorio Espanol), *Bloom Bloom Pow* (Gural Theatre ART/NY). Regional/Off-Off: *Hair* (Weston Playhouse), *Sleeper* (BRIC), *Fire This Time Festival* (The Kraine), *Blooms* (Ensemble Studio Theatre), *The Mountaintop* (Weston Playhouse), and multiple university productions. Intimacy Coordination: *Bottoms Up* (Pilot Episode, Directed by Brandon Dermer), *The Late Set* (Directed by Brendan Burke). laurenkdeleon.com



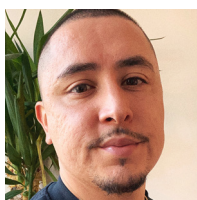
CYNTHIA SANTOS DECURE (Dialect Coach) is an actor, voice and dialect coach. She is an Associate Professor of Acting at David Geffen School of Drama at Yale University and certified in both Knight-Thompson Speechwork® and as an Associate Teacher of Fitzmaurice Voicework® specializing in accents, dialects and culturally inclusive pedagogies.

Some dialect credits: *Laughs in Spanish* (Denver Center), *Cymbeline* (NY Classical), *Quixote Nuevo* (Denver Center & Round House Theater), *Scenes with Cranes* (REDCAT/CNP), *Today is My Birthday*, *El Huracan* (Yale Rep), *I Come from Arizona* (Children's Theatre of Minneapolis), *In The Heights* (Phoenix Theater, Chance Theater), *The Long Road Today* (South Coast Repertory), *Orange is the New Black* (Netflix), *The Affair* (Showtime). Member of SAG/AFTRA, AEA. Some of her publications: co-editor, *Scenes for Latinx Actors*, and co-editor of the upcoming book, *Latinx Actor Training* (Routledge 2023).



IRIS MARCELINA ZACARÍAS (Associate Sound Design | she/they) is a NYC based sound designer and engineer. Their design credits include *Americano! The Musical* (Quixote Productions), *Chains: A Monologue in Two Voices* (Boundless Theatre Company), and *In Love and Warcraft* (Artists At Play & Latino Theatre Company). Her sound engineering

credits include productions on and off the road with New York Theatre Workshop, MCC Theatre, and Seattle Children's Theatre.



VICTOR VAZQUEZ, CSA (Casting Director | he/him) is the founder and lead Casting Director of X Casting in NYC. He has cast projects for Broadway (upcoming: *Soul Train*), Off-Broadway, London's West End, TV (upcoming: *Genius: MLK/X* for 20th TV, Nat Geo, Disney+), and Film. He is the proud son of Mexican immigrants. xcastingnyc.com



REBECCA MAY RISTOW (Assistant Director) is a senior at Eastern Connecticut State University where she majors in Theatre, in Acting and Directing, Dramaturgy, and Cultural Performance. Previous work at Eastern includes directing *Thank You For Meeting Me Here*, *The Ethics of a Funeral*, and *The Rocky Horror Picture Show*. Additionally, Rebecca's

dramaturgical work for *Oedipus the King* was selected for several research conferences.



ROB RUGGIERO (Producing Artistic Director) has been part of TheaterWorks Hartford artistic leadership for 30 seasons. He has directed over 65 shows, including TWH productions of *Fun Home*, *The Sound Inside*, *American Son*, *The Legend of Georgia McBride*, *Constellations*, *Next to Normal*, *Relativity* (starring Richard Dreyfuss) and *Christmas*

on the Rocks, which he also conceived. His Broadway credits include *Looped* (starring Valerie Harper in a Tony-nominated performance) and *High* (starring Kathleen Turner) which had its world premiere at TWH. He also conceived and directed the musical revue *Make Me a Song: The Music of William Finn* which moved off-Broadway and was nominated for Drama Desk and Outer Critics Circle Awards. Rob conceived and directed *Ella*, a musical about Ella Fitzgerald, which saw sold-out runs in 24 regional theaters and was produced as a National Tour. His work on plays and musicals has received multiple awards in Connecticut and around the United States. Rob recently directed *A Grand Night for Singing* at Goodspeed Musicals where over his 14-year relationship he has directed many award-winning musical productions. Internationally he directed *Fiddler on the Roof* in Athens, Greece.

MIKE LENAGHAN (Director of Production) is so happy to come back to TheaterWorks Hartford this season after spending the past 8 years as the Production and Design teacher at Kinsella Magnet School for Performing Arts. From 2004-2014 Mike was Technical Director then Production Manager and occasionally Props Master. Regional credits: Goodspeed Musicals, Juilliard School Production Department, Downtown Cabaret Theater and Westport Playhouse. Broadway credits include *Thoroughly Modern Millie*, *Our Town* and *Fortune's Fool*. Off-Broadway: *The It Girl*, *Suburb* and *The Summer of '42*.

NICOLE WEIGERT (Production Stage Manager) TheaterWorks Hartford: *Fun Home*, *Zoey's Perfect Wedding*, *This Bitter Earth*, *Christmas on the Rocks '21*, *Walden*. Regional: Goodspeed Opera House, Hartford Stage, Long Wharf, CT Rep, Mountain Playhouse, Ivoryton Playhouse, Theater by the Sea, First Stage Milwaukee, Renaissance Theatreworks, Milwaukee Ballet, Milwaukee Public Theater, Milwaukee Chamber Theater. Television: *House Hunters*, *Extreme Cheapskates*, *Biggest Loser*. Other: Love to LC, WW and CW.

ACTORS' EQUITY ASSOCIATION (AEA) was founded in 1913 as the first of the American actor unions. Equity's mission is to advance, promote and foster the art of live theatre as an essential component of our society. Today, Equity represents more than 40,000 actors, singers, dancers and stage managers working in hundreds of theatres across the United States. Equity members are dedicated to working in the theatre as a profession, upholding the highest artistic standards. Equity negotiates wages and working conditions and provides a wide range of benefits including health and pension plans for its members. Through its agreement with Equity, this theatre has committed to the fair treatment of the actors and stage managers employed in this production. AEA is a member of the AFL-CIO and is affiliated with FIA, an international organization of performing arts unions. actorsequity.org

THANKS

THANKS FOR MAKING THINGS HAPPEN



Hartford
Foundation
FOR PUBLIC GIVING



BANK OF AMERICA



GREATER HARTFORD
ARTS COUNCIL

J. WALTON BISSELL
FOUNDATION

TRAVELERS

The Edward C. & Ann T.
Roberts
FOUNDATION

Lincoln
Financial Foundation



Raytheon
Technologies

cthumanities

TD Bank
America's Most Convenient Bank®

Connecticut
still revolutionary

THE SHUBERT
FOUNDATION INC.

The Burry Fredrik Foundation

Cheryl Chase and Stuart Bear Family Foundation

Ensworth Charitable Foundation, Bank of America, N.A., Trustee

John and Kelly Hartman Foundation

The George A. & Grace L. Long Foundation, Bank of America, Co-Trustee

The Saunders Foundation

William and Alice Mortensen Foundation

Richard P. Garmany Fund at the Hartford Foundation for Public Giving

The Elizabeth M. Landon and Harriette M. Landon Charitable Trust

The Katherine K. McLane and Henry R. McLane Charitable Trust

Liberty Bank



The Goodwin is the official hotel of TheaterWorks Hartford.

COVID SAFETY TEAM

Cecelia Chapman

Joshua Demers

Bill Farquhar

THANKS

Fernando Ferro, Greater Hartford YMCA, Hartford Stage, Long Wharf Theatre
and Jacob Padrón, Margaret Carbonneau, R. J. Kinsella Magnet School of
Performing Arts

STAFF

Producing Artistic Director
Rob Ruggiero

Producing Associate
Kate J. Cudworth

Director of Production
Mike Lenaghan

Company Manager/
Costume Supervisor
Cecelia Chapman

Resident Designer/
Design Coordinator
Brian Prather

Audio-Visual Supervisor
Adam Bintz

Lighting Supervisor
Carter Miller

Technical Director
Sasha Wahl

Master Carpenter
David Weaver

Assistant Stage Manager/
Wardrobe
Julius Cruz

Director of Development
Dina Silva

Development and Community
Engagement Associate
Erica Tracy Sullivan

General Manager
Nicole LaFlair Nieves

Business Associate
Yaasmeen Cook

Operations Manager
Bill Farquhar

Director of Audience
Administration
Joshua Demers

House Manager
Sam Boushé

Audience Services
Alexis Gardiner
Will Prenetta

Director of Marketing/
Communications
Freddie McInerney

Marketing Associate
David Samuel

QUEEN CREW

Lead Electrician
Brian McManamy

Electricians
Chris Bell
Reed Simiele

Scenic Charge
Miranda Casler

Scenic Artist
Erin Sagnelli

Sound Board Operator
Noah LaPlante

Carpenters
Joseph DePalmer
Alec Montgomery

FOH Interns
Jake Berube
Nydiana Gonzalez
James Seufze

BOARD

Dina Plapler (President)
Kristen Phillips (Vice President)
Larry Samplatsky (Treasurer)
Grace Figueredo (Secretary)
Jennifer DiBella (Asst Secretary)
Michael G. Albano
Stacy Brusa
Fernando Ferro
Christopher R. Hayes

Gordon Hui
Stephanie A. Johnson
Lee G. Kuckro
Supriya S. Laknidhi
Felix Okwaning
Robert Pulito
Marcia Smith
Christopher White

ANNUAL FUND DONORS

PLATINUM PARTNERS

Gifts of \$25,000+

Cheryl Chase and Stuart Bear Family Foundation

Jeffrey and Nancy Hoffman

David Holmgren

LAZ Parking

Thomas W. and Emily B. Nissley

The Estate of June M. Rosenblatt

Dennis Russo and WondriskarRusso

Ruth G. Timme Family Foundation

Theresa Waltz

GOLD PARTNERS

Gifts of \$10,000+

Common Sense Fund

ETCH

Robert and Francine Goldfarb

Ted and Adlyn Loewenthal

Marjorie E. Morrissey

SILVER PARTNERS

Gifts of \$5,000+

Anonymous

Matthew and Patricia Berky

Grace Figueredo and Ken Gostyla

Ted and Kathy Fleming

Suzanne M. Hopgood

William Knight and Jill Adams

The Elizabeth M. Landon and Harriette M. Landon Charitable Foundation

Joy McConnell

The Katharine K. McLane and Henry R. McLane Charitable Trust

Eric D. Ort and Duff Ashmead

Kristen M. Phillips and Matthew Schreck

Dina Plapler and Earl McMahon

Dr. Anne Rothstein and Jane Hellman

Larry Samplatsky and John Tackus

Elizabeth Schiro and Stephen Bayer

Jonathan and Sherry Schreiber

Kevin and Marcia Smith

Joseph Zimmel

The Zachs Family Foundation

BRONZE PARTNERS

Gifts of \$2,500+

Acorn-Alcinda Foundation

Staci Bachman

Ivan A. Backer and Paula Fisher

Andrew Benator

BRONZE PARTNERS (continued)

Gifts of \$2,500+

Jacqueline Berkowitz
 Stacy Brusa
 Helen and Henry Frye
 The Gawlicki Family Foundation
 Peter Grzybala and Diane Korntheuer
 Brad M. and Jill J. Hutensky
 Lee G. Kuckro
 Marcia Lattimore
 Judy Lewis
 Jia Luo and Michael Monts
 Jill and Martin Mass
 Joan and Barry Richter
 James M. Salemi and Kenneth J. Bartschi
 Elizabeth Vandeventer and Edward Cumming

LEADING DONORS

Gifts of \$1,000+

Doug and Sheryl Adkins	David and Jan Klein
Michael G. Albano and Nancy B. Alisberg	Dr. and Mrs. Bernard Kosto
Anonymous	Wally and Chris Lamb
Liz Armstrong	Katherine J. Lambert
Thomas O. and Melanie A. Barnes	Steve and Sheila Litchfield
Peter and Lisa Block	Kathleen Lovell
James Bruno and William Gratz	Kenneth and Cynthia Malm
Claire Burns	Guy and Sharon Marhewka
Karen K. Byrne	Leta W. Marks
Ann M. Catino	Sheila Marks
Alison and Tony Caxide	Richard E. and Paula Musgrave
Amy Charney and Lewis K. Wise	Beverly O'Halloran
Tammy Conley and Roselinde Torres	Bill and Joy O'Sullivan
Richard A. and Aida Cyphers	Richard Orr and Cynthia Courtney
Catherine Daly and Roy Dion	Gerald Pastor and Jane Porterfield
Jack and Alice Ellovich	Robert and Margaret Patricelli
Diane Ellsworth	Roberta W. Prescott* and Robert O. Hurwitz*
David W. and Cheryl Epstein	Bob and Patti Pulito
The Fechter Family Foundation	Theresa Rebeck
Jocelyn and Dan Fenyn	Joan and Allan B. Reiskin
Muriel and Karl Fleischmann	Linda L. and Stephen E. Revis
William Fuller	Annemarie H. Riemer
Tom and Cynthia Garten	Kenneth and Julie B. Saffir
Catherine Godin	Pedro Segarra and Charlie Ortiz
William T. Gough and Jane Cook	The Carol Sirot Foundation
Floyd W. Green, III	Helen and Nelson Sly
Diana Haghighat and Gerardo Gutierrez	Jeff Snyder
Brian E. Harvey and Sherry A. Manetta	Sally Speer
Angeline and David Hein	Robert Stillman and Leslie Fass
Gordon and Kelly Hui	Donna M. and Sam Stout
Douglas and Tita Hyland	Allan B. and Sally S. Taylor
Sharon and David Jepson	Jeff Rudikoff and Edee Tenser
Evan H. Johnson and Kevin Chick	Dale Woodiel, Sr. and Linda Rountree
Stephanie Johnson	Dale Paul Woodiel, Jr.

*deceased

ANNUAL FUND DONORS

LOYAL SUPPORTERS

Gifts of \$250+

Accounting Resources, Inc.	Christine Hunihan
P. K. and Phoebe R. Allen	Bradley and Lisa Hurley
Anonymous	David Jimenez
Joyce and Richard Armstrong	Donna M. Kidwell
Stephen and Judy August	Jennifer and James Kimenker
Ann Azevedo and Donato T. DiGenova	David J. and Ruth Krugman
Edwin L. and Edith G. Baum	Susannah Landis
Anthony and Beverley Bellisio	John W. and Joyce R. Lemega
George Bouthet	Peggy Lorence
Whitney Boynton and Kevin Galvin	Dr. Christopher K. Manning and Chuck Riott
Avery and Eileen Buell	Eileen M. Marks and Ed Mikolowsky
Mary and Ritchard Cable	Erin McGurk
Christopher Hayes	Brian Molinari and Kristan Pierz
Jonathan Clark	Leigh Newman and Gary Starr
Steven and Elaine Cohen	Don Noel
Communication Strategies	Emily Noel
James P. Condren and Ellen J. Robinson	Felix Okwaning
Susan B. Coogan	Alan and Jennifer Paneccasio
Cynthia Coppage	Alan and Michele Parker
Catherine Costa	Sara and Tim Parker
Linda and Fred Cote	Adam E. and Alison S. Perrin
Mally and Jim Cox-Chapman	Randi and Steve Piaker
Jennifer and Marc A. DiBella	Leslie Pilder
Hollis Dorman	Raphael Podolsky and Jill Mehler
Beverly and Chris Doyle	Frances Porter
Melissa J. Taylor-Doyle and Chris Doyle	Laura Post and Mark Pazniokas
Susan and Ned P. Dunn	Sandra and George Pruce
Dr. Barbara Edelstein	Marion and Seth Radeen
Carolyn Emerson	Jo-Anne Rankin and John Williams
William and Joan Farquhar	Jo Ann Roberts
David and Peggy Fay	Nancy and Stephen Roberts
Richard and Georgia Feigel	Joel and Susan Rottner
Stanley and Susan P. Fellman	Barbara Rubin
Christine Fisch	Rob Ruggiero
Michael and Evelyn Fishman	Sandra H. and Marshall Rulnick
Elinor R. and Herbert Flink	Jennifer and Christian Sager
Mary-Jane Foster	Linda M. Samoncik
Timothy A. and Roxane M. Fromson	Martha Sandefer and Frederick Sweitzer
Elizabeth Gagne	William Schaberg
Rachel Galligan	Roberta P. and Philip A. Schmidt
Robert Garrey	Leon H. and Brenda Seitelman
Alice and Gary Gold	Dana and Chuck Shimkus
Megan and Jay Goldstein	Debbie and Jim Shmerling
Robert and Lee Goode	Shortell Framing
Thomas Goodrum and Evelyn Benoit	Barbara Sicherman
Daniel G. Green and Walter Langner	Penny and Steve Sigal
Pierre and MaryEllen Guertin	Dina Silva
Laura Harris	Darlene C. and Guy A. Simonian
Frank Haviland and Shirley Mae Neu	Leslie Smith and Philip Wellman
Felice Heller and Michael Steinberg	Sharon W. and Robert H. Smith
Danny Holgate and Gail Nelson	Tyler Smith and Lyn Walker
Warren Hollister	Patricia B. Snyder
Susan Holmes and Bessy Reyna	Emily and Norman Sondheimer
Jacqueline Hubbard and Norman Needleman	

6.1.21 - 1.11.23

LOYAL SUPPORTERS

Gifts of \$250+

Catherine J. Spera	Hope W. Vath
Felix J. and Helene L. Springer	Alexander P. and Bella Zubkov
Cynthia B. and Alan L. and Adam Stern	Laura and Matthew Wallace
James G. and Marcia E. Sutton	Arthur Edward Webster
Thomas and Donna Swarr	Mara A. Whitman and Marc Edrich
Robert H. Tabshey	Gretchen H. Wiedie
Ellen D. and John B. Thomas	Karen and Philip Will
Roberto Tollis and Peter Chester	Lawrence and Deena Williams
Dan and Janet Tracy	Arnold and Myrna Wyse
Ruth Treat	Elliot Zweig and Doreen
Maria Tsitsirides	Fundiller-Zweig

TERRENO BAR PIÑA

GOOD TIMES ARE RIGHT AROUND THE CORNER

**DINNER BEFORE THE SHOW /
DRINKS AFTER THE SHOW**

PRIX FIXE + FULL MENU AVAILABLE

3 COURSES

\$39 / PERSON

SERVED 5-9PM



SERVING IN BAR PIÑA AND TERRENO

**LOCATED ONE BLOCK FROM THE THEATER IN THE
GOODWIN HOTEL**

1 HAYNES ST. 860.904.2101

PINAHARTFORD.COM



AN OASIS OF CLASSICAL AND CLASSIC MUSIC

WMNR.ORG

88.1FM 91.5FM 90.1FM

THE ROB RUGGIERO INNOVATION FUND

Michael G. Albano and Nancy B.
Alisberg

P. K. and Phoebe R. Allen

Anonymous

Mr. Peter Arakas and Ms. Karen
Kellerman

Virginia Argenio

James E. and Karen Bachman

Ivan A. Backer and Paula Fisher

Lynn Beaulieu and Gerry Lupacchino

Martha and Bob Belliveau

John and Laura Berman

Vanita Bhalla

John W. Bialobrzewski and Janet Rooney

Geraldine L. and Vern A. Biederman

Patti Broad

Chester and Glenna Brodnicki

James Bruno and William Gratz

Ken Byer and Anthony Michalak

Patricia Carrigan

Polly Champ

Martin and Lorry Clayman

Patrick and Elena Coffey

Catherine Conlin

Susan B. Coogan

Jane V. Coughlin and Keith R. Cudworth

Evan Cowles and Brie Quinby

Marisa Dal Ponte

Marjorie and Ronald Debold

Ms. Nancy M. Depalma

Jennifer and Marc A. DiBella

Sharon F. and George Dickerman

Marian Dziama and Karen Cormier

Susan Fay

Art Feltman and Dale James Wallington

Joan Fox

Arthur Franklin

Jerry and Ida Franklin

Catherine Franks

Helen and Henry Frye

Michael Fuss

Barbara Gallo

Carol and Peter Ganick

Ken and Jennifer Geisler

Robert and Francine Goldfarb

Felice Goldman

Firooz and Maria Golkar

William T. Gough and Jane Cook

Eileen Griffin

Lillian G. Harter

Ronald V. and Patricia Hensley

Warren Hollister

Beverly J. and Richard L. Hughes III

Polly Huntington

Susan Huntington

Valerie and Mathew Jasinski

Evan H. Johnson and Kevin Chick

James J. Keller and Candice M.
Chirgotis

Kitchen and Bath Design Construction

Dr. Alan and Lydia Klatsky

David and Jan Klein

Linda Koflanovich

Michele and Dane Kostin

Darwin W. and Susan Kovacs

Lee G. Kuckro

Nancy and Jerry Lahman

Supriya and Vijay Laknidhi

Annette Landry

Christopher Larsen

Marcia Lattimore

John W. and Joyce R. Lemega

Sherwood and Gwendolyn Lewis

Peggy Lorence

Diane Mack and Robin Gilmartin

David T. and Judith W. Macri

Gloria Magliozzi

Lenore Mand

Judith C. and David L. McChesney

Joy McConnell

Kenton McCoy

Thomas and Marjorie Michalski

Donald N. and Regina M. Miller

Rachel Miller

Marjorie E. Morrissey

Richard E. and Paula Musgrave

Barbie Nadal-Cristofaro and Victor
Cristofaro

Wilbur J. and Amy Sevell Nelson

Kathy and Walter Nicksa

Jo Nol

Julia O'Brien

Dottie O'Meara

Nancy Pacht

Linda Parent

Marlene Passman

Saul and Joanne Pasternack

Gerald Pastor and Jane Porterfield

Kristen M. Phillips and Matthew Schreck

Dina Plapler and Earl McMahon

Rochelle Pleet

Leslie Pollack

continued

Roberta W. Prescott* and Robert O.
Hurwitz*

Susan Rathgeber

Martey S. Rhine

Margaret and Charles Rich

Margaret Rick

Judith Rifkin

Christina and Ezra Ripple

Alice B. and Robert Rodner

Sari and Jim Rosokoff

Marjorie Ross

Barbara Rubin

Linda Ryan

Jennifer and Christian Sager

Larry Samplatsky and John Tackus

Phyllis and Austin Sheridan

The Carol Sirot Foundation

Jen and Kenneth Siskind

Gilbert and Ruth L. Small

Leslie Smith and Philip Wellman

Kevin and Marcia Smith

Larry Starr

Kate Steven

Dot and George Stone

Donna M. and Sam Stout

Mervyn Strauss

Robert H. Tabshey

Eleanor D. Tener

The Ruth G. Timme Family
Foundation

Mary Lee Morrison

Hope W. Vath

Theresa Waltz

Linda Webber

Judith and Joel Weisman

Peter M. and Ellen T. Zeman

*deceased

A Special Goodbye and Thank You

We recently had to say a sad goodbye to long-time
Board Member and TWH supporter Roberta Prescott.

Our hearts are with her family as they navigate their loss. We
will miss her never-ending smile, her bright optimism, and her
unconditional support and faith in us and the work we do.

With Love and Gratitude, thank you Roberta.

— Your TWH Family



Roberta Prescott 2022

From Our Friends at RAW

Creative Cocktail Hour

Live Music | Contemporary Art | Creative Expression | Community

The third Thursday of each month!

Next event:

Thurs. 2/16 6pm

REAL 56 Arbor Street.
ART 860.232.1006
WAYS www.realartways.org



YOU ARE
golden



LUX BOND & GREEN
JEWELERS *celebrating* 125 YEARS



GLASTONBURY MOHEGAN SUN WEST HARTFORD WESTPORT BOSTON WELLESLEY

EVERY BOX HAS A STORY™