



AMERICAN SON

by Christopher Demos-Brown

directed by Rob Ruggiero

October 18–November 23

**THEATER
WORKS
HARTFORD**

WELCOME TO SEASON 19/20

It was really important to me that we open our newly renovated space with a play that profoundly speaks to our world today. A story that exposes questions and truths that demand to be talked about. Something undeniably TheaterWorks.

AMERICAN SON is that play. It challenges us to think about how we navigate assumptions, fear, prejudice, parenthood, and new definitions of family and marriage. As we confront current social, political and racial pressures, it reminds us that ultimately it is our humanity that transcends all obstacles.

This explosive story of an estranged couple desperately trying to find their son is really a catalyst for a more critical dialog about an interracial couple as they navigate our nation's cultural divide. At its core, AMERICAN SON makes us question who we are as a nation – and maybe, just maybe, inspires us to think about who we want to be.

My hope is that this season will challenge and entertain, inspire and provoke—and create important and engaging dialogue with our community. It will take you on a journey that reflects the power of family, and reveal our humanity through the lens of America now.

Welcome home!



Partners



BANK OF AMERICA

The Saunders Foundation

#Hartford



@theaterworksct

#AmericanSonPlay



theaterworkshartford

#TheaterWorksCT



@theaterworksct

AMERICAN SON

by Christopher Demos-Brown
directed by Rob Ruggiero[†]

THE CAST

Kendra Ellis-Connor	AMI BRABSON*
Scott Connor	J ANTHONY CRANE*
Officer Paul Larkin	JOHN FORD-DUNKER*
Lieutenant John Stokes	MICHAEL GENET*

Set Design	BRIAN PRATHER
Costume Design	HERIN KAPUTKIN
Lighting Design	MATTHEW RICHARDS
Sound Design	FREDERICK KENNEDY
Fight Director	MICHAEL ROSSMY
Casting	MCCORKLE CASTING, LTD.

Production Manager	BRIDGET SULLIVAN
Stage Manager	KATE J. CUDWORTH*

Cover Design by WondriskaRusso
Photo by Nir Arieli

AMERICAN SON is presented by special arrangement with Samuel French, Inc.,
a Concord Theatricals Company."

The world premiere of AMERICAN SON was presented at Barrington Stage Company, Pittsfield, MA in 2016, Julianne Boyd, Artistic Director and Tristan Wilson, Managing Director."

Original Broadway Production produced by Jeffrey Richards; Simpson Street; Rebecca Gold; Will Trice; Stephen C. Byrd; Alia Jones-Harvey; Nnamdi Asomugha; Domnick LaRuffa, Jr. & Co.; Greenleaf Productions; Van Kaplan; Willette & Manuel Klausner; Jada Pinkett Smith; The Miami Group; Lu-Shawn M. Thompson; Act 4 Entertainment; Gabrielle Palitz; Carl & Robin Washington; Bruce Robert Harris and Jack W. Batman; Shonda Rhimes; Bellanca Smigel Rutter; Salmira & Son; Jayne Baron Sherman; Steve Stoute for United Masters; Steven Toll; Dwyane Wade; Gabrielle Union-Wade; and The Shubert Organization.

[†]Member of SDC, Stage Directors and Choreographers Society.

*Appearing through an Agreement between TheaterWorks and Actors' Equity Association, the Union of Professional Actors and

TheaterWorks is celebrating its 34th season as a non-profit, professional theater company. Founded in 1985.

AMERICAN SON is the 1st production of the 2019-2020 Season.

TheaterWorks • 233 Pearl Street • Hartford, CT 06103 • 2019

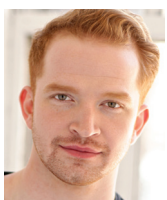
who



AMI BRABSON (Kendra Ellis-Connor) is making her TheaterWorks debut. She is an actor, singer and producer. Ami plays Vanessa on the next and final season of *Power* (Starz Network). Other television credits include Mary Pembleton / *Homicide: Life on the Streets*, Judge Karyn Blake / *Law and Order: SVU*, Judge Tchaikovsky / *Bull Damages*, *The Jury*, *Law & Order* and various Soap Operas. Ami's stage credits include her one-woman shows, *Phenomenal Women* and *A Change is Gonna Come*. Other stage credits include the New York Premiere of *Tough Titty* by Oni Faida Lampley. Some of her favorite regional theater roles are Linda in *Curve of Departure*, Faye in Dominique Morisseau's *Skeleton Crew*, Quilly in John Henry Redwood's *The Old Settler* and Rose in August Wilson's *Fences*. Ami is an accomplished soprano and cabaret singer. She has performed at New York City venues as varied as Merkin Concert Hall, The Metropolitan Room and Ashford & Simpson's Sugar Bar. Ami received her MFA from the NYU/Tisch Graduate School of Acting. amibrabson.com



J ANTHONY CRANE (Scott Connor) is making his TheaterWorks debut. Broadway: *The Country House*, *Sight Unseen*, *Butley* (MTC) *The Winslow Boy* (Roundabout). Off-Broadway, National Tours, and Regional: Title role in *Cyrano* (TheatreWorks Silicon Valley); *Watch on the Rhine* (Arena, D.C.); Scar in *The Lion King* (First National Tour); M. Thenardier in *Les Miserables* (N. America Tour); *Spamalot* (Wynn Las Vegas); *Modern Orthodox* (Dodger Stages); *Disgraced* (Goodman Theater, Berkeley Repertory, Seattle Repertory, Mark Taper Forum); Barrington Stage, The Old Globe, Capital Rep, Merrimack Rep, Pasadena Playhouse, Actors Theater of Louisville, and others. Helen Hayes and BATCC Nominations. TV/Film: *Chicago PD*, *Madam Secretary*, *Elementary*, *CSI*, and USA's *The Big Easy*. Theatre from Northwestern University. For Susan Ellen. IG: @janthonycrane



JOHN FORD-DUNKER (Officer Paul Larkin) is excited and honored to be making his TheaterWorks debut. Regional: *Red* (Geva Theatre), *Miss Bennet: Christmas at Pemberley* (Cincinnati Playhouse in the Park), *King Charles III*, *The Curious Incident of the Dog in the Night-Time* (Pioneer Theatre), *That High Lonesome Sound*, *So Unnatural a Level*, *A Christmas Carol*, *The Glory of the World* (Actors Theatre of Louisville). Other: *The Glory of the World* (BAM), *Soot and Spit* (Our Voices Theatre), *Macbeth* (Old Hat Theatre Company), *Hands on a Hardbody* (Park Playhouse), *Wonderful Town* (Quisisana Resort). TV/Film: *The Conan O'Brien Show* (*Conan at The Apollo*, the Clueless Gamer with Aaron Judge). Training: BFA Musical Theatre from University of Wisconsin-Stevens Point, Actors Theatre of Louisville Professional Training Company.



MICHAEL GENET (Lieutenant John Stokes) is making his TheaterWorks debut. Michael most recently starred on Broadway as Principal Hawkins in *The Prom*, Headmaster in *Choir Boy*, and as Dr. Dillamond in *Wicked*. Other Broadway/Off-Broadway credits: *A Few Good Men*, *Hamlet*, *Lestat*, *Is God Is*, *Fences*, *A Soldier's Play*, *The Tempest*, *All My Sons*, *Dance Of The Holy Ghost*, *The Whipping Man*. TV: *I Know This Much Is True*, *Blue Bloods*, *The Affair*, *The Mysteries of Laura*, *Ugly Betty*, *Taxi*

Brooklyn, The Following, Law & Order, Tyler Perry's House Of Payne, As The World Turns Film: *25th Hour, She Hate Me* (also screenwriter), *One Fine Day, Booty Call, Wall Street 2*. Awards: Winner NAACP Image Award for Outstanding Writing In A Motion Picture for FOCUS Features' *Talk To Me*, starring Don Cheadle.

CHRISTOPHER DEMOS-BROWN (Playwright) has written over a dozen full-length plays and screenplays. His honors include the Laurents/Hatcher Award, a Steinberg Citation from The American Theatre Critics Association, and multiple regional theatre awards (including two Carbonell Awards, multiple Silver Palms and the inaugural Berkshire Theatre Award for Outstanding New Work). His plays include *American Hero, Captiva, Stripped*, and *When The Sun Shone Brighter*. Chris is a graduate of Dartmouth College and holds graduate degrees from The Fletcher School of Law and Diplomacy and The University of Geneva. He is also a practicing trial lawyer and former prosecutor. Chris and his wife, Stephanie, are co-founders of Zoetic Stage, an award-winning theatre in residence at The Adrienne Arsht Center for the performing Arts in Miami, Florida. They also practice law together in Miami. Chris's play, *AMERICAN SON*, recently had a successful run at the Booth Theatre on Broadway, directed by Kenny Leon, and starring Kerry Washington, Steven Pasquale, Jeremy Jordan, and Eugene Lee. The play is being adapted as a feature film on Netflix and will be released this summer.



ROB RUGGIERO (Director/Producing Artistic Director) has been part of TheaterWorks artistic leadership for 26 years. He has directed over 60 shows, including TW productions of *The Legend of Georgia McBride, Constellations, Next to Normal, Relativity* (starring Richard Dreyfuss) and *Christmas on the Rocks*, which he also conceived. His Broadway credits include *Looped* (starring Valerie Harper in a Tony-nominated performance) and *High* (starring Kathleen Turner) which had its world premiere at TW. He also conceived and directed the musical revue *Make Me a Song: The Music of William Finn* which moved off-Broadway and was nominated for Drama Desk and Outer Critics Circle Awards. Rob conceived and directed *Ella*, a musical about Ella Fitzgerald, which saw sold-out runs in 24 regional theaters and was produced as a National Tour. His work on plays and musicals has received multiple awards in Connecticut and around the United States. In his eleventh collaboration with Goodspeed Musicals, Rob directed *Oliver* where he also directed many award-winning musical productions. His adaptation of *Show Boat* is now being licensed by the Rodgers & Hammerstein Organization. Internationally he directed *Fiddler on the Roof* in Athens, Greece.

BRIAN PRATHER (Set Design) is the Resident Designer for TheaterWorks, with shows that include *Fully Committed, Girlfriend, The River, Relativity, Sex With Strangers, Playing the Assassin, Dancing Lessons*, and many others. Recent Off-Broadway: *Heartbreak House* (GTG), *Daniel's Husband* (Primary Stages), *Widowers' Houses* (TACT/Gingold), *A Christmas Carol* (St. Clement's), *Becoming Dr. Ruth* (Westside), *Freud's Last Session* (New World Stages), and *The Burnt Part Boys* (Playwrights Horizons). International: Chung-mu Art Hall (South Korea). Regional: Alley Theatre, Goodspeed Musicals, Barrington Stage Co., Shakespeare Theatre of New Jersey, Shakespeare on the Sound, Capital Rep., among many others. Joseph Jefferson Award (Chicago) winner, Emmy nomination (New England) for The Kate concert series on CT Public Television, Associate Artist at Barrington Stage Co. and a member of USA Local 829. See Brian's work at brianprather.com

HERIN KAPUTKIN (Costume Design) is making her TheaterWorks debut. Other credits include: *The Tempest* (Shakespeare on the Vine); *Romeo and Juliet* (Elm Shakespeare Company); *Marvelous* (FringeNYC); *The Shakes: Romeo and Juliet* (Flea Theater); *Cendrillon* (Purchase Opera Company); *Twelfth Night* and *Three Birds Alighting on a Field* (Purchase Repertory Theatre). Yale Credits include: The World Premiere of *El Huracán* (Yale Rep); *Othello*, *The Girl Is Chained* and *Pentecost* (Yale School of Drama); *North of Providence*, *This Sweet Affliction* (Yale Cabaret.) Herin received her B.F.A. in Costume Design from Purchase College before receiving her MFA at the Yale School of Drama.

MATTHEW RICHARDS (Lighting Design) TheaterWorks: *Hand to God*, *The Invisible Hand*, *Shakespeare's R&J*, *American Buffalo*, *Souvenir*, *Speech and Debate*, *The Seafarer*, *Driving Miss Daisy*, *Doubt*, *Woman Before a Glass*. Broadway: *Ann* starring Holland Taylor. Opera: *Macbeth* at L.A. Opera. Off-Broadway: *Is God Is* at Soho Rep; *Absolute Brightness...*, and *The Curvy Widow* at Westside Arts; *The Killer*, *Tamburlaine*, and *Measure For Measure* at Theatre For a New Audience]. Regional: Actor's Theater of Louisville; Arena Stage; Baltimore's Center Stage; Cincinnati Playhouse; Cleveland Play House; Dallas Theater Center; Ford's Theatre; The Goodman; Hartford Stage; The Huntington; La Jolla Playhouse; Long Wharf; The Old Globe; Shakespeare Theatre; Westport Playhouse; Williamstown Theatre Festival; Yale Repertory Theatre.

FREDERICK KENNEDY (Sound Design) is pleased to return to TheaterWorks, where he previously designed *The River* and *Fully Committed*. He has worked for more than a decade as a sound designer, percussionist, and music producer and has appeared on dozens of recordings; toured throughout North America and Europe, as well as to parts of South America, the Caribbean, and the South Pacific; and taught numerous classes in improvisation, composition, and sound design for multimedia as a guest artist at universities around the United States. As a designer, he has produced work for theater, video, commercials, and dance. Recent work includes *Native Son* (The Acting Company), *The Bacchae* (Classical Theater of Harlem), *The Veil Widow Conspiracy* (National Asian American Theater Company) and *Twelfth Night* (Yale Repertory Theater), which received a Connecticut Critics Circle nomination for best sound design. He holds a MFA in Sound Design from Yale School of Drama and a Bachelor of Music in Jazz Studies from the University of North Texas. www.fredkennedy.org

MICHAEL ROSSMY (Fight Director) Previously at TheaterWorks: *The Invisible Hand*. Broadway: *A Tale of Two Cities*. Regional credits include: The PUBLIC Theatre, Westport Country Playhouse, Goodspeed Musicals, Paper Mill Playhouse, Asolo REP, The Old Globe, Pennsylvania Shakespeare Festival, Princeton University, The Acting Company, SoHo REP, The Geffen Theatre, Long Wharf Theatre, McCarter Theatre, Carnegie Mellon University, and others. He was nominated for a 2017 Drama Desk Award for his work on *Troilus and Cressida* for The Public Theatre's production in Central Park. Michael is in his fourteenth year as a Faculty Lecturer in Acting at the Yale School of Drama and is the Stage Combat and Intimacy Advisor for undergraduate productions at Yale College. Michael is also an Intimacy Director whose work has been featured in theatres across the country.

MCCORKLE CASTING, LTD (Casting) Pat McCorkle, CSA & Katja Zarolinski, CSA. Broadway: Over 50 productions including: *On The Town*, *Amazing Grace*, *End of the Rainbow*, *The Lieutenant of Inishmore*, *Cat on a Hot Tin Roof*, *One Flew Over The Cuckoo's Nest*, *Amadeus*, *She Loves Me*, *A Few Good Men*. etc. Off-Broadway: Over 60 productions: Highlights: *Party Face*, *Clever Little Lies*, *Tribes*, *Our Town* (Barrow Street), *Freud's Last Session*, *Toxic Avenger*, *Almost Maine*, *Driving Miss Daisy*. Feature films: *Mental State*, *Senior Moment*, *Child of Grace*, *Year by the Sea*, *Premium Rush*, *Ghost Town*, *The Thomas Crown Affair*, *Die Hard with a Vengeance*, *School Ties*, etc. Television: *Twisted*, *Humans for Sesame Street*, *Hack* (CBS), *Californication* (Emmy Nomination), *Max Bickford* (CBS), *Chappelle's Show*, *Strangers with Candy*, *Barbershop*, etc. www.mccorklecasting.com

BRIDGET SULLIVAN (Production Manager) joined the TheaterWorks team in 2016. Her experience includes production and project management, as well as many years in the world of props. Head of production for the Weston Playhouse Theatre Company in Vermont for 7 years, Bridget's past work also includes managing celebrity concerts at North Shore Music Theatre and being Project Manager for Barbizon Lighting Company. Other credits include City Theatre Company in Pittsburgh and the Santa Fe Opera. Bridget also teaches Stagecraft at Capital Community College in downtown Hartford. Go Team TW!

KATE J. CUDWORTH (Production Stage Manager) has enjoyed six seasons with TheaterWorks including *The River*, *Hand to God*, *The Invisible Hand*, *The Legend of Georgia McBride*, *The Wolves*, *Fade*, *Next to Normal*, *Sunset Baby*, *Relativity*, *Midsummer*, *Woody Sez* and *Becoming Dr. Ruth*. Off-Broadway: *Freud's Last Session*, [title of show]. NY/Regional: Barrington Stage Company (8 seasons including *Freud's Last Session*; *Dr. Ruth*, *All The Way*; Joe Iconis' *The Black Suits*), Atlantic Stage Company, Hartford Stage, Manhattan School of Music (4 seasons), Yale Opera, York Theatre Company, Bronx Opera Company, Fringe NYC, NYMF.

ACTORS' EQUITY ASSOCIATION (AEA) was founded in 1913 as the first of the American actor unions. Equity's mission is to advance, promote and foster the art of live theatre as an essential component of our society. Today, Equity represents more than 40,000 actors, singers, dancers and stage managers working in hundreds of theatres across the United States. Equity members are dedicated to working in the theatre as a profession, upholding the highest artistic standards. Equity negotiates wages and working conditions and provides a wide range of benefits including health and pension plans for its members. Through its agreement with Equity, this theatre has committed to the fair treatment of the actors and stage managers employed in this production. AEA is a member of the AFL-CIO and is affiliated with FIA, an international organization of performing arts unions. For more information, visit www.actorsequity.org

thanks

Bin228, Farmington Valley Transition Academy, Flower District, Erin Garten, Greater Hartford YMCA, Hartford Police Department & Officer DeMaine, Hartford Stage, Long Wharf Theatre, Debbie Markowitz, Salute

MAKING THINGS HAPPEN



Hartford
Foundation
FOR PUBLIC GIVING

TRAVELERS 



GREATER HARTFORD
ARTS COUNCIL

aetnaSM

Bank of America 

The Edward C. & Ann T.
Roberts
FOUNDATION

 **Lincoln**[®]
Financial Foundation

J. WALTON BISSELL
FOUNDATION

 **United
Technologies**

THE
SHUBERT
FOUNDATION INC.


THE
HARTFORD

Connecticut
still revolutionary

Richard P. Garmany Fund
Ensworth Charitable Foundation, Bank of America, N.A., Trustee
John and Kelly Hartman Foundation
William and Alice Mortensen Foundation
The George A. & Grace L. Long Foundation, Bank of America, Co-Trustee
The Saunders Foundation

staff

Producing Artistic Director
Rob Ruggiero

Producing Associate
Taneisha Duggan

Director of Marketing/
Communications
Freddie McInerney

Director of Development
Dina Silva

Audience Administration
Joshua Demers

Business/Development
Associate
Diana Sparks

Technical Director
Zachry Pilat

Stage Manager
Kate J. Cudworth

Assistant Stage Manager/
Company Manager/
Wardrobe
Cecelia Chapman

Production Photographer
Lanny Nagler

2019-2020 Season
Where you want to be.
twhartford.org

General Manager
Nicole LaFlair Nieves

Artistic Associate
Eric Ort

Marketing Associate
Michael McKiernan

Operations Manager
William Farquhar

Production Manager
Bridget Sullivan

House Managers/
Audience Services
Sam Boushé
Alexis Gardner
Will Prenetta
Gabriel Ruiz

Assistant Technical Director
Sasha Wahl

Audio-Visual Supervisor
Adam Bintz

Master Electrician
Chris Bell

Resident Designer/
Design Coordinator
Brian Prather

Production Assistant/
Cafe Operator
Megan Velasquez

board

Dina Plapler (President)
Evan Johnson (Vice President)
Jack Ellovich (Treasurer)
Michael A. Martone (Secretary)
Jocelyn Fenyn (Asst Secretary)
Michael G. Albano
Stacy Brusa
Jennifer DiBella
Grace Figueredo
Gordon Hui

Lee G. Kuckro
Supriya S. Laknidhi
Gerry Lupacchino
Daniel O'Connell
Roberta Prescott
Robert Pulito
Dennis Russo
Larry Samplatsky
Marcia Smith

AMERICAN SON crew

light board operator
Chris Bell

sound board operator
Adam Bintz

carpenters
Phillip McInerney
Brian Montmagny

foh interns
Cat Gillespie
Hallie Friedman
Owen Ing
Scott Mazzapica
Avery Oullette
Sheridan Schreyer

marketing intern
Emma Shroh

Season 19/20



Where you w

20 continues



**THEATER
WORKS
HARTFORD**

want to be.

thanks for making the dream possible

In the spirit in which we received these gifts, all donors (from \$5 to \$2.7 million) are listed side by side to celebrate your generosity and collective love of TheaterWorks — we love you right back!

Gerard I. and Georgia Adelman
Marla L. and Peter Adelsberger
Doug and Sheryl Adkins
Michael G. Albano and Nancy B. Alisberg
Victoria F. and Leonard Albert
Barbara J. Alex
Joyce H. Allen
P. K. and Phoebe R. Allen
Gregory and Mona Anderson
Rosanne and Stephen Anderson
John M. Andreini
Anonymous (6)
Carolyn Arabolos
Dorothy T. Arnold
John R. and Angela Arrington
Andrew Asensio
Stephen and Judy August
Joanna Aversa
Ann Azevedo and Donato T. DiGenova
James E. and Karen Bachman
Staci Bachman
Ivan A. Backer and Paula Fisher
Barbara Backman
James Bagni
Shawnee Baldwin
Leonard and Elizabeth Banco
Carol and Margaret Barnes
Thomas O. and Melanie A. Barnes
Michael Baron
Ann and Randy Barton
Dr. David M. Bass and Harriet Cutler
Sara J. Batchelder
Paul and Vivian M. Batterson
Sonia Bayne
Lynn Beaulieu and Gerry Lupacchino
Dolph F. and Marjorie Becker
Anthony and Beverley Bellisio
Lee Ann and Claudio Benadiva
Andrew Benator
Ms. Cynthia Bendel Kelly
Diane Bennett
Gary S. and Elizabeth J.T. Berman
John and Laura Berman
Larry and Jannie Berman
Estelle and Abraham Bernstein
Lynn Bernstein
Harry and Roberta S. Berry
Timothy Bertaccini
John W. Bialobrzdeski and Janet Rooney
Antay Bilgutay and Paul Ditolla
Tom Bloom
David and Sandra Bobowski
Scott Boden and Mary Ayre
Tracy Bodine
Ellen and Russell C. Boehle
Mark Boelhouwer
Terry Bogli
Cathy and Steven Bokoff
R. Kelley Bonn
Chris Borowy
David and Ann Brandwein
Sasha and Jamie Bratt
Philip E. Brencher, Jr.
Wanda Broaden
Joan O. Brodeur
Chester and Glenna Brodnicki
The Honorable Luke and Sara Bronin
Karen and Tim Brown
Janet and William Brownstein
James Bruno and William Gratz
Stacy Brusa
Thomas and Margo Burns
Joan and Robert Butler
John and Karen K. Byrne
Mary and Ritchard Cable
Marla Campbell
Rise and John Cappadona
Helena and Alvaro Cardoso
Robert and Linda Carlson
Bonnie Caron
Sue Carpenter
Chip Caton and Catherine Lyons
Janice Catrone
Lynn F. and Jack Cavo
Paul Cestari
John and Peggy Chapman
Lyle and Lois Chapman
Blair Childs
Ed and Tracy Church
Rose Marie Cilia
Ann Clark and David Ehler
Lenora Clark
Susan Clemow
Jonathan E. Clune and Sarah Potter
Douglas Cohen and Phyllis F. Shikora
Holly Cohen
Janice Cohen and Byron Fisher
Dennis Cole
Sue Ann Collins
James P. Condren and Ellen J. Robinson
Catherine Conlin
State of Connecticut, Department of Economic and Community Development
Connecticut Lighting
Audrey Conrad
Susan B. Coogan
Nessie Cormier
Marianne Cornish
Richard Costabile
Wayne H. Coste and Gail Adams
Kayla C. Costenoble
Joseph and Erin Cotier
Jane V. Coughlin and Keith R. Cudworth
Audrey Courtney
Cynthia Courtney and Richard Orr
Evan Cowles and Brie Quinby
William Cuddy and Vivien Blackford
Jay M. and Harriet L. Cudrin
Phyllis and Peter Curcio
Richard A. and Aida Cyphers
Etienne M. and Caroline D'Otreppe
Charles Dahlberg

renovation donors

Catherine Daly and Roy Dion
Lorie Darrow
Arnold and Sandy Dashefsky
Emilie and Raul de Brigard
Marjorie and Ronald Debold
Stan Deitz
Linda Demikat
Kurtis L. Denison
Mary Alice Dennehy
Timothy and Rebecca Derby
Design Source CT
Jennifer and Marc A. DiBella
Sharon F. and George Dickerman
Heather and Philip Dilorenzo
Suzanne Carroll Dineen
Martha and James DiTomasso
Dennis and Penny Dix, Jr.
Kate Dixon
Michele and John L. Dolan
TJ Donohue
Brooks W. and Paula L. Dorn
Michelle and John Drain
John and Anna Drake
Susan and Richard Drayton
Ann Drinan
Mr. and Mrs. Franklin S. Dubois, Jr.
Linda Dunakin
Gerald Dunne
Nancy Eastlake
Sharon and Bob Efron
Margot Egan
Anne M. Eglinton
Ms. Mary-Jane Eisen and Robert K. Yass
Jack and Alice Ellovich
Carolyn Emerson
David Emmel
Roberta Enoch
David W. Epstein
Alice and Tracy Ericson
Joanne E. Ernest
Linda Estabrook
Melvin Estrada
William Faircloth
Richard and Georgia Feigel
Fenmore and Gladys Feigenbaum
Stanley and Susan P. Fellman
Sue Fennelly
Jocelyn and Dan Fenyn
Lillian A. Ferdinand
Anthony A. and Anita Ferrante
Susan Fierberg and Howard Scheinblum
Grace Figueredo and Ken Gostyla
Robert and Beth Finnance
Christine Fisch
Michael and Evelyn Fishman
Kathleen Fitzsimmons
Muriel and Karl Fleischmann
Joyce Flescher
Elinor R. and Herbert Flink
Joy M. Floyd
Thomas Foran
Barry and Kim Ford
Jane and John Fox
Joan Fox
Arthur Franklin
Jerry and Ida Franklin
Hedley Freake and Elizabeth Huebner
Dr. Stephen L. Alloy and Ms. Sharron
Freeman

Dr. Franklin and Joanne Friedman
Judith W. Friend
Nicole and Thomas Fromson
Helen and Henry Frye
Michael and Adrienne Fulco
William Fuller
Francis J. Gagliardi
Jane Gallagher
Barbara Gallo
Peter and Melissa Gambardella
Diana Garey and Paul Dolinsky
The Richard P. Garmany Fund at the
Hartford Foundation for Public Giving
Jennifer Gaudet
Annette Gavens
The Gawlicki Family Foundation
Harold and Ava Geetter
Mary and Gary Gello
Charlotte Gemmell
Judith Z. Gilligan
Carolyn Gimbrone and Robert Bowsza
Fred Gladstone and Laura Berlin
Ellie and Mark W. Goldberg
Robert and Francine Goldfarb
Felice Goldman
Arnold and Pat Goldstein
Megan and Jay Goldstein
Firooz and Maria Golkar
Robert and Lee Goode
Leonie R. Goodfriend
Bob Gordon
Pamela and Barry Gordon
The Gryphon Fund
Peter Grzybala and Diane Korntheuer
Denise and Jorge Guerra
Pierre and MaryEllen Guertin
Serene Hackel
Joan Hagan
Diana Haghghat and Gerardo
Gutierrez
Dorothy Hall
John and Susan Hall
Joan Halpert
Barbara Hamilton
Kathleen and Robert Hampp
Susan Hannon
Beth Ann and Michael Harney
Leo B. and Karen Harrington
Hartford Steam Boiler Company
Jane and Rob Harty
Frank Haviland and Shirley Mae Neu
Kimberly Haythorn
Louise T. Healey
David J. and Lauren D. Henry
Ronald V. and Patricia Hensley
Gina E. Herboldt
Stuart Herlands
Robert B. Hewey and Carol Simpson
Charles and Maria Higgins
Joy Himmelfarb
Alden Hobart
Dale Hodges and David Logan
Jeffrey and Nancy Hoffman
Mark and Kristine Hoffman
Maximilian E. and Marion O. Hoffman
Foundation
Wilma Hoffman
Warren Hollister
Susan Holmes and Bessy Reyna

thanks for making the dream possible

David Holmgren
Kennedy and Jennifer Hudner
Beverly J. and Richard L. Hughes III
Gordon and Kelly Hui
Stephany Hunt
Bradley and Lisa Hurley
Dr. Albert and Joan Hurwit
Brad M. and Jill J. Hutensky
Douglas and Tita Hyland
Theodore and Judith Ingis
Arthur B. and Susan H. Israel
Mark Izzo
Beverly Jackowitz
Sandra Jacobus
Jill E. Jensen
Sharon and David Jepson
Evan H. Johnson and Kevin Chick
Judy-Ann Johnson
Shirley Johnson
Fellis and Harold Jordan
Sandra Justin
Eva and Michael Kaplan
Theodore Kaplan and Roberta F.
Woronow
Marian Katz
Robert and Lynn Katz
Roberta Kaufman
Marion Kelliher
Joan Kennedy and Francis Keefe
Ann F. Kenny
Barbara Kiefer
Robert and Candace K. Killian
Jennifer and James Kimenker
Susan A. King
Susan Kinkade
Judith M. Kissane
David and Jan Klein
Joel and Naomi Baline Kleinman
Myra R. and William Kleinman
Judith Lee Kline
Don Knapp
Susan Knapp
Rosemarie Kochanowsky
Roza Kogan
Carol A. Kolp
Fredrick Kopper
Ursula G. Korzenik
Dorri P. and Jonathan Kost
Dr. and Mrs. Bernard Kosto
Charles D. and Lois Koteen
Nancy A. Kramer
Tammi Kraushaar
Abbey Kreinik
Christine C. and Roy Krumperman
Lee G. Kuckro
Ms. Laurie and Tom Kyzivat
Joyce Laccavole
Ms. Susan Lagassee
Nancy and Jerry Lahman
Sid Laibson
Supriya and Vijay Laknidhi
Katherine Lambert
Nick LaMedica
Regina Landesberg
The Elizabeth M. Landon and Harriette
M. Landon Charitable Foundation
Carol and Hank Landry
Gerald Laraia
Mercedese E. Large
Christopher Larsen
Marcia Lattimore
Patricia Lavery
S. K. Lavery
Ann and Bill Lazarek
Charles and Joan Leach
Margaret M. Leake
Barbara L. Lederer and Laurel
Hennebury
Randolph M. Lee
Sandra Lee
John W. and Joyce R. Lemega
Susan Lennon
Jane Lennox and John Sanzone
Gary and Debbie Letscher
Lynnette Letsky-Piombo
Michael S. and Carolyn W. Levine
Michael Levinson
Harlan J. Levy and Patricia Weiss
Judy Lewis
Karen Licht
Julie and Carl Lindquist
Doreen Linton
Diane Liska
Barbara and Bing Liu
Ted and Adlyn Loewenthal
George Lombardo
Frank C. Lord and Suzanne M.
Hopgood
Peggy Lorence
Kathleen Lovell
Elizabeth and Peter Luchina
Glen MacLeod
Nancy Macy and Robert Painter
Kenneth and Cynthia Malm
Adam and Beth Man
Lenore Mand
Linda Manning
Joseph Marcoux
Ellen and Jerry Margolis
Guy and Sharon Marhewka
Barri R. Marks
Kathleen Coville Marr
Paul Marte
Mary Martin and Jeff A. Amell
Juanita Martinez and Frank Torree
Michael Martone and Jose Fernando
Max Cares Foundation
Roy A. McAlpine and Emily Estes
Jay McAnally
Dottie McCaughtry
Judith C. and David L. McChesney
Joy and Tom McConnell
Esther McCune
Pat McDougall
Robert and Linda M. McGurn
Freddie and Denny McInerney
Valnere McLean
Karen N. McNey
Marilyn and Wayne McPhee
Sandy McRae
Marjorie Mead
Yvette Melendez and Carl Chadburn
Seymour and Judith G. Melnick
Sarah Melquist
Deborah J. and Peter L. Meny
Thomas and Marjorie Michalski
Mary Miko
David Miller

renovation donors

Donald N. and Regina M. Miller
Elizabeth R. and Stephen Miller
Kathleen Miller
Marilyn Miller
Rachel Miller
Susan T. and Douglas T. Miller
Lynne and David Miner
Sal Modifica
Brian Molinari and Kristan Pierz
Michael J. Moran
Noreen M. and John P. Moreschi
Ms. Mary Moriarty
Michael John Morris
Johanna Morrison
Pat and Larry Morrison
Shirley Morrison
Marjorie E. Morrissey
Natalie and Joel Morse
The William and Alice Mortensen
Foundation
Blanche Moskowitz
Janet Moskowitz
Dr. Theodore F. and Carole Mucha
Barbara Mulholland
Karen Murphy
Robert Murphy and Catherine M.
Wynne
Richard E. and Paula Musgrave
Jan Musen
Barbie Nadal-Cristofaro and Victor
Cristofaro
Ms. Susan Namerow
Lisa Nappi
Carolyn Neely
Wilbur J. and Amy Sevell Nelson
Willa Nemetz
Margaret Newton
Jennifer Noble
Don Noel
Jo Nol
Christiane Noll
Martha R. and Louis Nunes
Julia O'Brien
Daniel and Lori O'Connell
Kathleen O'Donnell
Dottie O'Meara
Bill and Joy O'Sullivan
Linda Obedzinski
Andre Oberle and Ed Below
Eric D. Ort and Duff Ashmead
Roger Ouellette
Sally and Tom Oxman
Joseph Palladino
Arthur A. Palmunen
Harold E. and Lorraine Panciera
Alan and Jennifer Paneccasio
Jean Partridge
Jack and Jill Pasanen
Gerald Pastor and Jane Porterfield
Alex and Mary-Jane Pazda
Lisa Peake
Libby S. Pearl
Penny A. and John E. Pearson
Ms. Hillary B. Pease and Mr. Robert W.
Pease
Jason Peck
Laura and David Pels
Ralph Perkins
Wendy A. Peterson
Janet Petrowsky
Dave Pickus
Theresa Piotrowski
Joanne Pizzoni
Dina Plapler and Earl McMahon
Raphael Podolsky and Jill Mehler
Michael and Susan Pohlod
Maryann Poinelli
Rie Poirier-Campbell and Michael
Campbell
Matthew K. Poland
Leslie Pollack
Susan Pollard
Roberta W. Prescott and Robert O.
Hurwitz
Robert and Patti Pulito
Christine W. Quartiero
William and Ruth E. Rabinowitz
David T. and Amy Raccagni
Ettore C. and Laura Raccagni
Anita and Monty Rackow
Lynn Reid and Susan Egan
Joan and Allan B. Reiskin
William Reitman
Janet and Peter Reynolds
Margaret and Charles Rich
Joan and Barry Richter
Margaret Rick
Drs. Michael Lustick and Barbara
Rickler
Clara and Joseph Riley
Margaret Riley
Christina and Ezra Ripple
Scott R. Ritter
Frank Rizzo
Joann Roberts
Stephen L. and Nancy Roberts
Robinson & Cole
Marytherese and John Rodis
Alice B. and Robert Rodner
Jennifer Rogers
Thomas Ronalter
Gilda and David Roncari
Harriet and Leo Rosen
Steve Rosenberger
Sari and Jim Rosokoff
Charles L. and Barbara Ross
Nina C. and Duccio Rosselli Del Turco
Rosalie B. Roth
Dr. Anne Rothstein and Jane Hellman
Joel and Susan Rottner
Henry Ruggiero
Rob Ruggiero
Sandra H. and Marshall Rulnick
Mary Beth Russell
Dennis Russo
Edward Russo and Len Comeau
William Goba and Joan Russoniello-
Goba
Deborah and Michael Sacks
Jennifer and Christian Sager
James M. Salemi and Kenneth J.
Bartschi
Zapata Salazar
James J. and Patricia A. Salvador
Larry Samplatsky and John Tackus
Saraellen and Tom Sargent
John Scandura
Lenore Schack

renovation donors

Cora Sue and Bing Scherer
John J. and Suzanne D. Schloss
Ralph D. and Louise Schmoll
Jonathan and Sherry Schreiber
Kristofer Schumacher
Ms. Marcie B. Schwartz and James
Calciano
Loretta and Fred Scribner
Sharon and Lynn Scull
Chris Scully
John Scully and David Osella
Patricia A. Scully
Linda Scussel
Bernie Selig
Andrew and Karen Serio
Elizabeth and Stephen J. Shamroth
Richard M. and Cyral A. Sheldon
Amy and Arthur Sher
Maryanne B. Shinn
Debbie and Jim Shmerling
Ronit and Scott Shoham
Joseph Shortall and Sara Bernstein
Shortell Framing
Penny and Steve Sigal
Thaddeus and Mary Sikora
Mr. Fred Silbermann
Dina Silva
Darlene C. and Guy A. Simonian
Valerie M. and John Siraco
The Carol Sirot Foundation
Jen and Kenneth Siskind
Ellen Siuta
SLAM Collaborative
Mark Slitt
Helen and Nelson Sly
Gilbert and Ruth L. Small
Leslie Smith and Philip Wellman
Marcia and Kevin Smith
Shirley Smith
Sue W. and Richard K. Smith
Emily and Norman Sondheimer
Ruth and Howard Sovronsky
Tara Spain
Lori and Brian Sparks
Mary C. Spellacy
Deborah L. Spencer
Catherine J. Spera
Linda C. and John Spevacek
Reg Springer
Karin A. Stahl
Glenn Stanisewski
Lawrence Starr
Sondra Astor Stave
Scott and Jane Stearns
Barbara and Leon Stechenberg
Sandra Stein
Marilyn S. Steinmetz
Ruth Stern
Ellen and Andrew Stokoe
Shepard and Marlene Stone
Hilary Stoudt
Donna M. and Sam Stout
Mervyn Strauss
Nancy Stuart and David Lang
Ms. Janet Stulting
Jack and Mary Anne Sullivan
John Sullivan
James G. and Marcia E. Sutton
Deborah R. Szajjberg
Robert H. Tabshey
Rosemarie and Harry Tamiso
Jerry and Eve Tarre
John and Barbara Taussig
Allan B. and Sally S. Taylor
Montell and Anjanette Taylor
Samuel H. and Joan Teller
Jeff Rudikoff and Edee Tenser
Lavell Thompson
Leonora and Bill Thramann
Christine Tobin
Humphrey Tonkin and Jane Edwards
Denise Trammel
Travelers
Ms. Ann Marie Tremont
Harriet Unger
Michelle J. Vadenais
Fran and Brian Van Linda
Cecily C. Vasington
Hope W. Vath
Donna Vickers
Anthony Vignone
Dan Violante
Karen and Jack Volinski
Ric Waldman
Laura and Matthew Wallace
Theresa and David Waltz
Diane M. Ward
Luther G. and Denise M. Weeks
Barry Weinstein
Betty and Alan Weintraub
Carolyn Weiser
Judith and Joel Weisman
Florence Wendell
John Wentland
Reeves Westmoreland
Robert and Penelope Whalen
Brooke and Ted Whittemore
Louise Wilder
Geri Williams
Martha and Donald Wilmot
Andrea Wilson
Christian and Michelle Winkler
Brad Witte and Deborah Slater
Virginia Wolf
Elizabeth B. Woodard
Hila Yanai and Mike Raker
The Zachs Family Foundation
Barbara Zakarian
Carol K. Zapadka
Joan Zawacki
Mary Zeman
Peter M. and Ellen T. Zeman
Joseph Zepperi
Joe Zimmel
Liz and Richard Zlatkus
Stephanie and David Zomick, M.D.
Elliot Zweig and Doreen Fundiller-Zweig
Nancy Zwiener

**We'd love to add more names
to this list. Any gift no matter
the size means the world to us!**

**twreno.org
dina@twhartford.org
to learn more**

PLATINUM PARTNERS

Gifts of \$25,000+

Jeffrey and Nancy Hoffman
LAZ Parking
Dennis Russo and WondriskaRusso
Theresa and David Waltz

GOLD PARTNERS

Gifts of \$10,000+

Lynn Beaulieu and Gerry Lupacchino
Cheryl Chase and Stuart Bear Family Foundation
Common Sense Fund
Helen and Henry Frye
Robert and Francine Goldfarb
Ted and Adlyn Loewenthal
Richard E. and Paula Musgrave
Thomas W. and Emily B. Nissley

SILVER PARTNERS

Gifts of \$5,000+

Duff Ashmead
Mark Boelhouwer
Ted and Kathy Fleming
Angeline Hein
The Elizabeth M. Landon and Harriette M. Landon
Charitable Foundation
Dr. Christopher K. Manning and Chuck Riott
Joy and Tom McConnell
The Katharine K. McLane and Henry R. McLane Charitable Trust
Lanny Nagler and Lanny Nagler Photography
Belle Ribicoff
Alicia Roncari and Bin228
Larry Samplatsky and John Tackus
Jonathan and Sherry Schreiber
The Zachs Family Foundation

BRONZE PARTNERS

Gifts of \$2,500+

Cynthia Bates and Jonathan Russell
Catherine Franks
Brad M. and Jill J. Hutensky
The Gawlicki Family Foundation
Lee G. Kuckro
Barri R. Marks and Woody Exley
Dr. Stacy Nerenstone and Morton Weinstein
Robin and Leonard Oremland
Julie and David Peck
Dina Plapler and Earl McMahon
Linda L. and Stephen E. Revis
Rob Ruggiero
Kevin and Marcia Smith
Michael Wilder

LEADING DONORS

Gifts of \$1,000+

Michael G. Albano and Nancy B.
Alisberg
Anonymous (2)
Dorothy T. Arnold
Peter and Lisa Block

Blue State Coffee
Whitney Boynton and Kevin Galvin
Julie A. Brogan and Christopher A.
Uhrich
Trudi and Lou Brown

annual fund donors

LEADING DONORS

Gifts of \$1,000+

continued

Stacy Brusa
John and Karen K. Byrne
Alison and Tony Caxide
Amy Charney and Lewis K. Wise
James N. and Amy Jane Cohen
Sue Ann Collins
Jack and Alice Ellovich
The Fechter Family Foundation
Jocelyn and Dan Fenyn
Grace Figueredo and Ken Gostyla
Muriel and Karl Fleischmann
Stefanie Foster
William Fuller
Irving L. Gilman Family Charitable
Foundation
John Gouveia
Peter Grzybala and Diane Korntheuer
Diana Haghighat and Gerardo
Gutierrez
Warren Hollister
Douglas and Tita Hyland
Sharon and David Jepson
Evan H. Johnson and Kevin Chick
William Knight and Jill Adams
Supriya and Vijay Laknidhi
Wally and Chris Lamb
Christopher Larsen
Judy Lewis

Steve and Sheila Litchfield
Jennifer and Richard Lotstein
Leta W. Marks
Sheila Marks
Julia McCormack
Louis M. and Marjorie B. Mendelson
Daniel and Lori O'Connell
Gerald Pastor and Jane Porterfield
Matthew K. Poland
Roberta W. Prescott and Robert O.
Hurwitz
Bob and Patti Pulito
Joan and Allan B. Reiskin
Kenneth and Julie B. Saffir
James M. Salemi and Kenneth J.
Bartschi
Elaine Sayadoff
Christopher Shyer and David S.
Ehrich III
Amy Lynn Silverman
Helen and Nelson Sly
Tyler Smith and Lyn Walker
Tara Spain
Donna M. and Sam Stout
Thomas and Donna Swarr
Alan B. and Sally S. Taylor
Tapper Charitable Foundation
Dan and Janet Tracy

LOYAL SUPPORTERS

Gifts of \$250+

Cynthia L. Abrams
Accounting Resources, Inc.
Acorn-Alcinda Foundation
Victoria F. and Leonard Albert
P. K. and Phoebe R. Allen
Gregory and Mona Anderson
Margery and Norman Andrews
Anonymous (3)
Carolyn Arabolos
Kathleen and Thomas Archambault
John R. and Angela Arrington
Stephen and Judy August
Ann Azevedo and Donato T. DiGenova
Pierre and Kate Barbour
Thomas O. and Melanie A. Barnes
Anthony and Beverley Bellisio
Catherine and Bruce Bernstein
Jon D. and Cheryl Bertus
John W. Bialobrzski and Janet Rooney
Judy Borden
Paul and Joanne Bourdeau
George Bouthet
Ross and Joyce Bray
Joel Brehm and Rodney Dugas
James and Riki Brodey
Ellen M. Brown
James Bruno and William Gratz
Avery and Eileen Buell
Arianna and Lori Calabrese
Janice Catrone
Lynn F. and Jack Cavo
Peter Chester
Bernard Chowaniec, Jr.
Edward and Tracy Church

Margaret and William J. Cibes, Jr.
Ann Clark and David Ehler
Jonathan Clark
Ellen and Kenneth J. Coco
Dale Shampaner Cohen
James P. Condren and Ellen J.
Robinson
Connecticut Lighting Centers
Donna R. and Arthur R. Cote
Joseph and Erin Cotier
Cynthia Courtney and Richard Orr
Stephen and Suzanne Couture
James and Sheryll-Ann Covill
Marc and Karyn d'Avignon
Etienne M. and Caroline D'Otreppe
Catherine Daly and Roy Dion
Jennifer and Marc A. DiBella
Michele and John L. Dolan
Hollis Dorman
Melissa J. Taylor-Doyle and Chris Doyle
Michelle and John Drain
Mr. and Mrs. Franklin S. Dubois, Jr.
Sharon and Bob Efron
Diane Ellsworth
Alycia B. Evica
William and Joan Farquhar
Stanley and Susan P. Fellman
Paula D. Fisher
David and Lynn Fleming
Jerry and Ida Franklin
Harry and Cay Freeman
Timothy A. and Roxane M. Fromson
Elizabeth Gagne
Rachel Galligan

LOYAL SUPPORTERS

Gifts of \$250+

continued

Marilda Gandara
Tom and Cynthia Garten
Catherine Godin
Alice and Gary Gold
Firooz and Maria Golkar
Bob Gordon
William T. Gough and Mary J. Cook
Daniel G. Green and Walter Langner
Tim Grogan and Bill Anderson
Pierre and MaryEllen Guertin
Elisa Hale and Donald Grove
Karen and Patrick Hatcher
Frank Haviland and Shirley Mae Neu
Charles J. and Karen Herbert
Debbie Hersh
Victor C. and Gail Herson
Alden Hobart
Christine Hunihan
David and HB Kaplan
Harriet R. and I. William Katz
Alan and Carolyn Kaufman
Marijke Kehrhahn
Karen Kelleher
Kitchen and Bath Design Construction
David and Jan Klein
William Knight and Jill Adams
The Betty Knox Foundation
Dr. and Mrs. Bernard Kosto
Nancy A. Kramer
Abbey Kreinik
Ken Krissingner
David J. and Ruth Krugman
Valerie A. LaMotte
Susannah Landis
Marcia Lattimore
Ann and Bill Lazarek
William and Deanna Leikin
John W. and Joyce R. Lemega
Michael S. and Carolyn W. Levine
Karen Licht
Doreen Linton
Jia Luo and Michael Monts
Laura Lynch
David T. and Judith W. Macri
Nancy Macy and Robert Painter
Kenneth and Cynthia Malm
Adam and Beth Man
Guy and Sharon Marhewka
Louis M. and Marjorie B. Mendelson
Eileen M. Marks and Ed Mikolowsky
Judy and Merrill Marks
Rick Marshall
Bernadette and Dennis Mayer
Fran Mayer and David Weill
Erin McGurk
Thomas and Marjorie Michalski
Donald N. and Regina M. Miller
George Miller
David Miner and Stephanie Robiner
Ann and Gregory Mittelmam
Sal Modifica
Brian Molinari and Kristan Pierz
Susan Monks and Mary-Ann
McNamara
Johanna Morrison
Janet Moskowitz
Dr. Theodore F. and Carole Mucha
Leigh Newman and Gary Starr
Wil Noel
Jo Nol
Beverly O'Halloran
Bill and Joy O'Sullivan
Joseph Pace
Kathi and Andy Packer
Alan and Michele Parker
Dave Pickus
Raphael Podolsky and Jill Mehler
Sandra and George Pruce
Marion and Seth Radeen
Rebecca M. Rehel and Suzanne E.
Caron
Alvin B. Reiner
Christina and Ezra Ripple
Stephen L. and Nancy Roberts
Deborah Roncari
Emily Rosen
Hila Rosen
Michele Rosenberg
June M. Rosenblatt
Joel and Susan Rottner
Richard and Elizabeth Rumohr
Edward Russo and Len Comeau
William Goba and Joan Russoniello-
Goba
Jennifer and Christian Sager
Linda M. Samoncik
Martha Sandefer and Frederick Sweitzer
Carolyn and Frank Sataline
Bernice Schaefer
Malcolm and Sally Schneider
Candance J. and William Shanahan
Robert Shepler
Joseph Shortall and Sara Bernstein
Penny and Steve Sigal
Dina Silva
Douglas and Roberta Simpson
Richard and Raimi Slater
Mary A. and William H. Smyers
Stan and Muriel Sokolow
Ernest H. Spieler
Felix J. and Helene L. Springer
Karin A. Stahl
William Stapleton
Lawrence Starr
Sondra Astor Stave
Barbara and Leon Stechenberg
Marilyn S. Steinmetz
Robert Stillman and Leslie Fass
Dot and George Stone
Robert H. Tabshey
John and Barbara Taussig
Jeff Rudikoff and Edee Tenser
George and Leslie Thomson
Roberto Tollis
Humphrey Tonkin and Jane Edwards
Sally F. and Thomas Tresselt
Mildred and Douglas Unfried
James and Kay Wade
Betsy Waller
Reeves Westmoreland
Robert and Penelope Whalen
Dan and Isabelle Whelton
Gretchen H. Wiedie
Arnold and Myrna Wyse
Joann Zamparo
Peter M. and Ellen T. Zeman
Alexander P. and Bella Zubkov

It's Showtime



PROUD SUPPORTERS OF THEATERWORKS

LUX BOND & GREEN

JEWELERS SINCE 1898

46 LASALLE ROAD WEST HARTFORD 860.521.3015

140 GLASTONBURY BLVD GLASTONBURY 860.659.8510

MOHEGAN SUN WESTPORT BOSTON WELLESLEY

LBGREEN.COM

EVERY BOX



HAS A STORY™

800.524.7336